

# Oasis Mailbox, Drop Box (Models 5100, 5103 & 6200) Mounting and Use Instructions

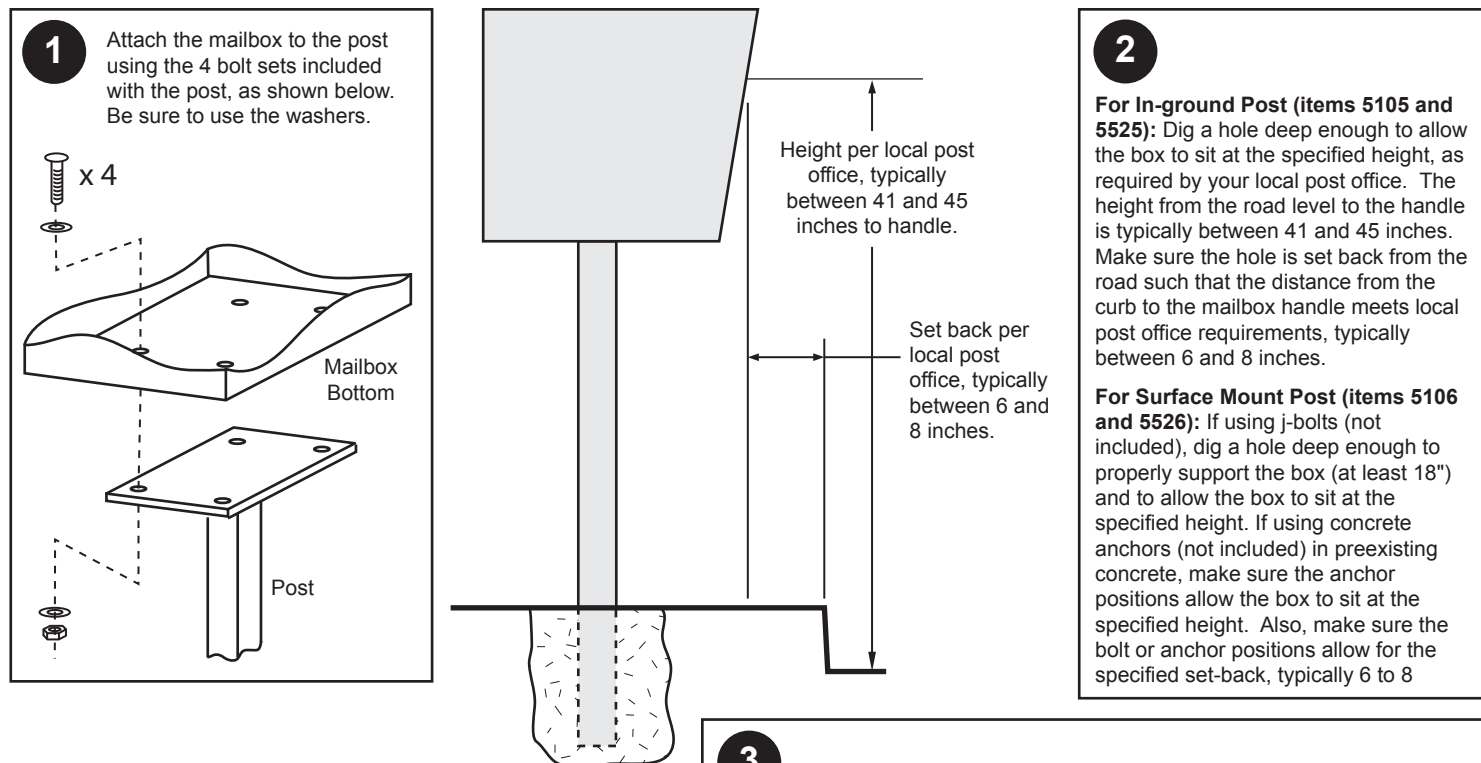
Thank you for purchasing this premium locking mailbox/drop box. We know you'll be satisfied with the years of service it will provide. If you have any questions about how to mount or use this box, or if you need any replacement parts, please call us directly at (800) 464-7491 or contact us at [www.architecturalmailboxes.com](http://www.architecturalmailboxes.com).

## Mounting your new mailbox or drop box

Your new mailbox or drop box comes completely assembled. To begin using your box, it must be properly mounted. If you are using your box for USPS mail delivery, you are required to mount it in accordance with USPS requirements to facilitate carrier access, described below. *If you are using your box for private use, these positioning requirements do not apply and you can mount the box to suit your needs.* Regardless of intended use, you can mount your box in one of several ways:

- 1) You can use the optional in-ground (item 5105 or 5525) or surface mount (item 5106 or 5526) post. Instructions are provided below for mounting on these posts.
- 2) You can mount your box in a masonry pilaster or on top of a masonry column. You may want to consult a qualified mason to assist with these mounting options.
- 3) You can mount your box using a wooden post. You may want to consult a qualified carpenter to assist with this mounting option.

For mailbox (models 5100 and 6200) installations intended for USPS mail delivery, CUSTOMERS ARE REQUIRED TO CONTACT THE LOCAL POST OFFICE BEFORE INSTALLING THE MAILBOX TO ENSURE ITS CORRECT PLACEMENT AND HEIGHT AT THE STREET. GENERALLY, MAILBOXES ARE INSTALLED AT A HEIGHT OF 41-45 INCHES FROM THE ROAD SURFACE TO INSIDE FLOOR OF THE MAILBOX OR POINT OF MAIL ENTRY (LOCKED DESIGNS) AND ARE SET BACK 6-8 INCHES FROM THE FRONT FACE OF CURB OR ROAD EDGE TO THE MAILBOX DOOR.



[www.architecturalmailboxes.com](http://www.architecturalmailboxes.com)  
(800) 464-7491