



RELIABILITY BUILT IN™

EasyInstall™

**PRE-RINSE UNIT
B-0133 Series
(B-0133-B, Pre-Rinse
Unit w/Wall Bracket)**

Installation and Maintenance Instructions

Limited One Year Warranty
T&S warrants to the original purchaser (other than for purposes of resale) that such product is free from defects in material and workmanship for a period of one (1) year from the date of purchase. During this one-year warranty period, if the product is found to be defective, T&S shall, at its option, repair and/or replace it. To obtain warranty service, products must be returned to....

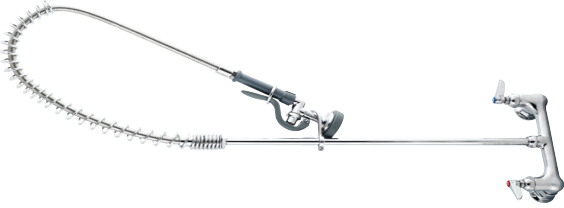
T&S Brass and Bronze Works, Inc.
Attn: Warranty Repair Department
2 Saddleback Cove
Travelers Rest, SC 29690

Shipping, freight, insurance, and other transportation charges of the product to T&S and the return of repaired or replaced product to the purchaser are the responsibility of the purchaser. Repair and/or replacement shall be made within a reasonable time after receipt by T&S of the returned product. This warranty does not cover items which have received secondary finishing or have been altered or modified after purchase, or for defects caused by physical abuse to or misuse of the product, or shipment of the products.

Any express warranty not provided herein, and any remedy for Breach of Contract which might arise, is hereby excluded and disclaimed. Any implied warranties of merchantability or fitness for a particular purpose are limited to one year in duration. Under no circumstance shall T&S be liable for loss of use or any special consequential cost, expenses or damages. Some states do not allow limitations on how long an implied warranty lasts or the exclusion or limitation of incidental or consequential damages, so the above limitations or exclusions may not apply to you. Specific rights under this warranty and other rights vary from state to state.

P/N: 098-014497-45 REV. 4
DATE: 04-13-05
DRAWN: TEH
CHECKED: DLT
APPROVED: JHB

Before starting the installation, be sure to flush supply lines and shut off water supply.
Cierre la fuente principal de agua y desagüe las tuberías.
Avant de commencer l'installation, coupez l'alimentation d'eau et purgez la tuyauterie.
Wasser abstellen und Wasserleitungen entleeren.



Step 1:
Apply plumber's putty to backside of body and insert into mounting hole. Line up water supply lines and couplings, attach and tighten with a wrench.



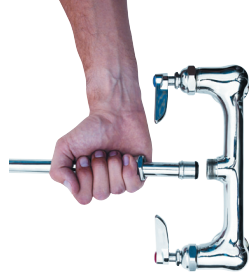
Step 2:
Apply plumber's tape to top of threads and attach to spring assembly.



Step 3:
Tighten spring body and riser assembly with a wrench in a counterclockwise direction.



Step 4:
Make sure that the EasyInstall® locking washer is seated properly inside the faucet body.



Step 5:
Grab riser assembly and lower the EasyInstall® end-fitting into faucet body. Press down until the end-fitting "pops" in.



Step 6:
Lock the EasyInstall® locking nut in place and tighten with a wrench in a clockwise direction.

Base Faucet Assembly

	Base Faucet Assembly	014209-40
	Base Faucet Asm w/ Ceramic Cartridge	015068-40
	Faucet Body	*
1	Asm, Spindle - Hot	002712-40
2	Asm, Spindle - Cold	002711-40
3	Ceramic Cartridge w/ Check Valve, RTC	011311-25
4	Ceramic Cartridge w/ Check Valve, LTC	011312-25
5	Handle, Lever - Blank	001638-45
6	Screw, Handle	000922-45
7	Index, Button - Hot (Red)	001661-45
8	Index, Button - Cold (Blue)	001660-45
9	Washer	*
10	Asm, Coupling Flange	002893-40
	Lock Washer, EZ-Install	014200-45

Riser Assembly

	Riser Assembly, 18"	000369-45
	Nipple, 3/8" x 18"	*
	Swivel Nut	*
11	Swivel Piece	001065-45
12	O-Ring, Swivel Piece	002873-40
13	Asm, Finger Hook & Screw	B-0109-01
14	Wall Bracket, 6" (add -B to model no. for wall bracket)	

Pre-Rinse Unit

	Pre-Rinse Assembly	000821-40
	Spring, Body	*
16	Spring, Overhead	B-0044-H
17	Asm, Flex Stainless Steel Hose	B-0107
18	Asm, Spray Valve	
19		

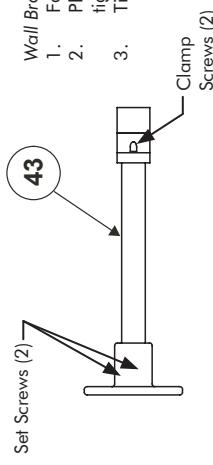
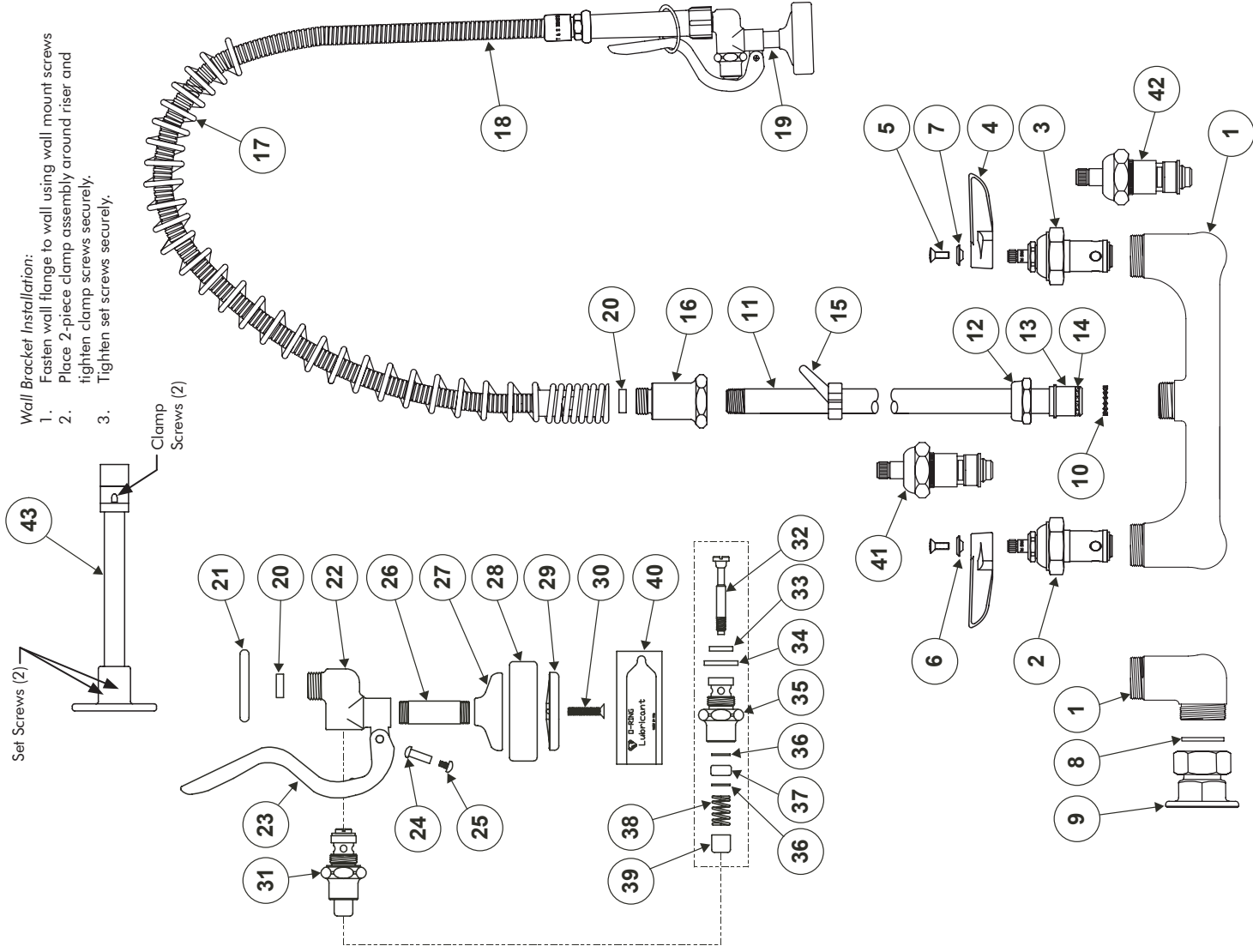
Spray Valve Assembly

	Asm, Hold Down Ring & Washer	010476-45
	Washer	000907-45
20	Ring, Hold Down	000065-40
21	Body, Spray Valve	001120-45
22	Handle	000973-45
23	Nut, Handle	003199-45
24	Screw, Handle	000694-40
25	Nipple	000019-40
26	Cup, Spray	007861-45
27	* Ring, Sprayhead	001121-45
28	* Ring, Sprayhead	000913-45
29	* Sprayface	
30	* Screw, Sprayface	

Bonnet Assembly

	Asm, Bonnet	002856-40
31	* Stem	009306-20
32	* Washer, Seat	012915-45
33	* Washer, Bonnet Binding	001040-45
34	Bonnet	000608-25
35	Washer, Bonnet Brass	000974-45
36	* Stem, Packing	001100-45
37	* Spring, Bonnet	000895-45
38	Pushbutton	000753-25
39	* Grease Pack (O-Ring Lubricant)	012665-45
40		

* Parts included in B-10K parts kit



Wall Bracket Installation:
 1. Fasten wall flange to wall using wall mount screws
 2. Place 2-piece clamp assembly around riser and tighten clamp screws securely.
 3. Tighten set screws securely.