



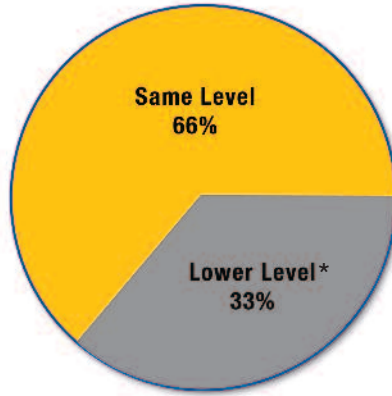
# **Slips / Trips / Falls**

10 steps to prevention



# Slips / Trips / Falls in the Workplace

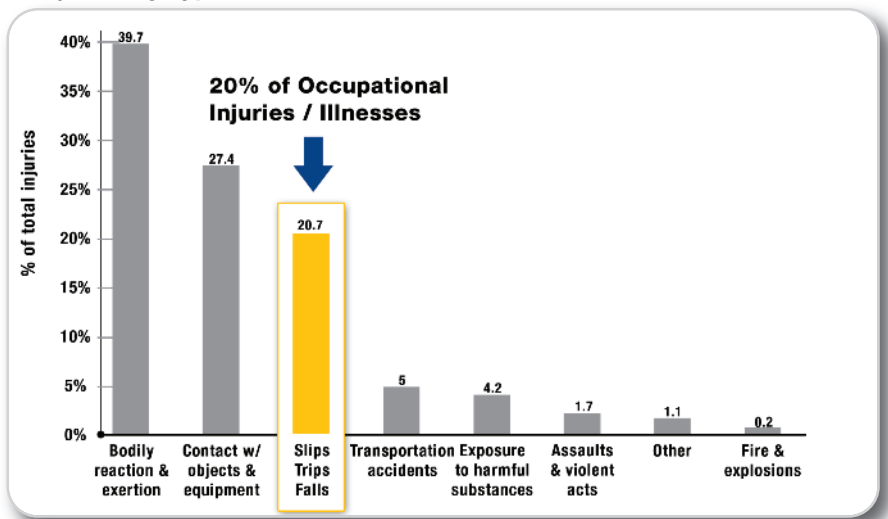
**20%** of workplace injuries are caused by slips, trips and falls. These result in an average of **11 days** away from work & **\$40,000** cost per incident



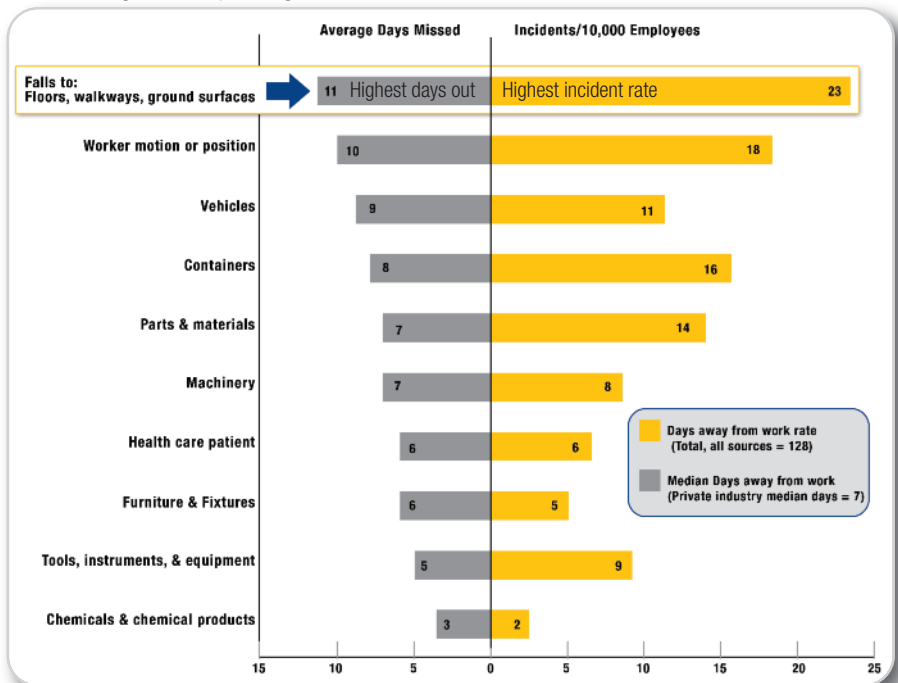
**2/3 of lost time falls are "same level"**

\*Lower level: down stairs, from ladders, floors or docks

Injuries by Type of Incident



Severity & Frequency



Source: Bureau of Labor statistics, U.S. Department of Labor, Survey of Occupational Injuries and Illnesses



**OSHA recognizes the significance** of slips, trips and falls accidents. The agency states that “Slips, trips, and falls constitute the majority of general industry accidents. **They cause 15% of all accidental deaths**, and are second only to motor vehicles as a cause of fatalities. The OSHA standards for walking / working surfaces apply to all permanent places of employment, except where only domestic, mining, or agricultural work is performed.”\*

\*The OSHA Walking and Working Surfaces Standard: Subpart D 29 CFR 1910.21-30, identifies requirements intended to minimize Slips, Trips and Falls in the workplace.

Brady provides a broad range of products and services designed to prevent workplace slips, trips and falls(S/T/F). These help to reduce the number of S/T/F-related injuries, and support compliance with OSHA, NFPA and other pertinent regulations and standards.

## 10 steps to preventing slips, trips and falls in the workplace:

- 1** Assess Your Slips/Trips/Falls Needs  
pg.4
- 2** Mark Aisles & Passageways  
pg.4
- 3** Provide Traction on Slippery Surfaces  
pg.5
- 4** Improve Safety on Stairs  
pg.6
- 5** Mark Emergency Evacuation Routes  
pg.6-7
- 6** Post Safety Signage & Labeling  
pg.8-9
- 7** Warn of Temporary Hazards  
pg.10
- 8** Inspect Scaffolds & Ladders  
pg.10
- 9** Control and Clean Oil & Spills  
pg.11
- 10** Train Your Employees  
pg.12



# Develop Programs / Mark Aisles & Passageways

## STEP 1

### Assess Your Needs; Develop a Program

**Section 5(a)(1)** of the OSHA Act, often referred to as the General Duty Clause, requires employers to "furnish to each of his employees employment and a place of employment which are free from recognized hazards that are causing or are likely to cause death or serious physical harm to his employees". Section 5(a)(2) requires employers to "comply with occupational safety and health standards promulgated under this Act".

### Brady On-Site Slips, Trips & Falls Audit & Assessment Service

Brady Professional Engineers will come to your facility and:

- Perform a complete audit of your facilities
- Document and summarize both required and recommended steps to minimize S/T/F concerns in the workplace
- Provide a basic written Program that encompasses facility inspection and employee training elements.

For more information, visit [www.bradyid.com/idservices](http://www.bradyid.com/idservices) or call 1-800-496-4040.



## STEP 2

### Mark Aisles & Passageways

**CFR 1910.22(b)(2)** Permanent aisles and passageways must be appropriately marked. **1910.22(b)(1)** Where mechanical handling equipment is used, sufficient safe clearances shall be allowed for aisles, at loading docks, through doorways and wherever turns or passage must be made. Aisles and passageways shall be kept clear and in good repairs, with no obstruction across or in aisles that could create a hazard

[www.bradyid.com](http://www.bradyid.com)  
 Search Word: aisle marking



### Brady Aisle Marking Tapes

- Made of long-wearing B-725 vinyl tape
- Applies quickly and sticks tightly
- Each roll: 108 ft.

### Striped Warning Tapes

- B-950 vinyl stands up to the toughest indoor conditions
- Meets OSHA specifications
- Each roll: 54 ft.

### Reflective Warning Tape

- Give an extra margin of safety in low light conditions.
- Made of B-957 reflective tape
- Each roll: 15 ft.

Size	Catalog No.					
	Yellow	Red	Green	White	Blue	Black
2"	58200	58201	58202	58203	58220	58222
3"	58250	58251	58252	58253	58221	58223
4"	102838	102836	102834	102837	102833	102839

Width	Catalog Number			
	Blk/Yl	Red/Wht	Blk/Wht	Grn/Wht
1"	55300	55294	55290	-
2"	55302	55296	55292	90019
3"	55303	55297	55293	90020

Width	Catalog #		
	White	Yellow	Orange
2"	78985	78986	78989
3"	78987	78988	78990

Stripes Width	Stripes & Checks			Checks Blk/Ylw
	Blk/Ylw	Red/Wht	Blk/Wht	
2"	76308	76309	76310	76321
3"	76312	76313	-	-



### Warning Message Tapes

- Stands up to the toughest indoor conditions
- Meets OSHA specifications
- Each roll: 60 ft.



### Warning Stripe Panels

- For overhead, wall and passage marking
- Made of B-946 self-stick vinyl
- 10 panels / pkg

Legend	Color	Catalog No.
CAUTION	Black/Yellow	58255
CAUTION/DO NOT ENTER	Black/Yellow	58256
	Black/Yellow	58257

Size	Yellow & Black
5 7/8" x 16 7/8"	55318
11 1/4" x 16 7/8"	55319

### Safety Color Code for Marking Physical Hazards

- [1910.144(a)].**
- Yellow & black for physical hazards
  - Red & white for fire protection equipment
  - Black & white for traffic and housekeeping markings
  - Magenta & yellow for radiation hazards.

# Traction on Wet & Slippery Surfaces

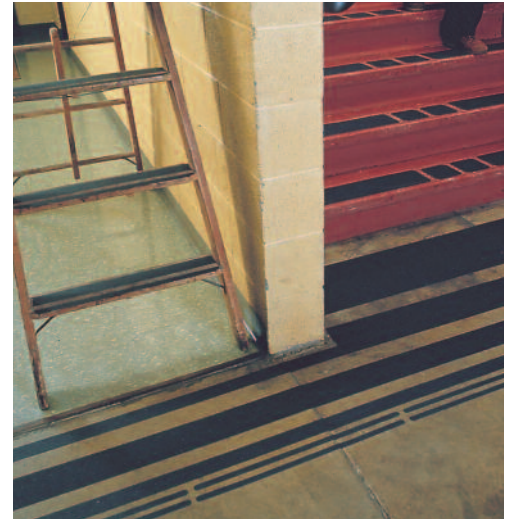
## Provide Traction on Slippery Surfaces

**STEP  
3**

### Anti-Skid Floor Tapes

- Made of rugged B-916 adhesive-backed polyester tape coated with thousands of particles of durable aluminum oxide grit
- Bonds permanently to clean, dry floors
- Works indoors and outdoors
- Withstands grease and oil
- Each roll: 60 ft.

Color	Size	Catalog Number
Black	1" x 60'	78189
Red	1" x 60'	78197
Black	2" x 60'	78190
Red	2" x 60'	78198
Safety Yellow	2" x 60'	78091
Black	4" x 60'	78191
Red	4" x 60'	78199
Safety Yellow	4" x 60'	78092
Black	6" x 60'	78193



### Heavy Duty Anti-Skid Tapes

- Aggressive adhesive system engineered to withstand harsh applications
- Durable "high slip resistance" with deeply textured silicon carbide grit
- Ideal for machinery, forklifts, loading docks, ramps and platforms
- **NFSI** - National Flooring Safety Institute certified for "high traction"
- Each roll: 60 ft

Color	Size	Catalog Number
Black	2" x 60'	110020
Black	4" x 60'	110019
Black	6" x 60'	110018
Black	12" x 60'	110017

### Anti-Skid Tapes with Hazard Message

- Mark dangerous areas of your plant
- Made of B-819 matte anti-slip overlamine
- Each roll: 3" x 54 ft.

Legend	Color	Catalog Number
CAUTION	Black/Yellow	92414
CAUTION/DO NOT ENTER	Black/Yellow	92415
CAUTION/WATCH YOUR STEP	Black/Yellow	92416
	Black/Yellow	92417



### Warning Stripe Anti-Skid Tapes

- Provides visibility of hazardous areas
- Made of B-916 grit coated polyester tape
- Adhesive backed plastic tape with an oxide grit coating
- Each roll: 60 ft.

Color	Size	Catalog Number
Black & Yellow Stripe	1" x 60'	78146
Black & Yellow Stripe	2" x 60'	78147
Black & Yellow Stripe	3" x 60'	78148
Black & Yellow Stripe	4" x 60'	78149
Black & Yellow Stripe	6" x 60'	78150

[www.bradyid.com](http://www.bradyid.com)

Search Word:



anti-skid tape



# Stair Safety

## STEP 4

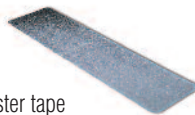
### Improve Stair Safety

**CFR 1910.24(f) Strair Treads...** All treads shall be reasonably slip-resistant and the nosings shall be of non-slip finish.



#### Anti-Skid Cleats

- Made of B-916 grit-coated polyester tape
- Simply peel off protective liner and press in place
- Standard package: 50 cleats (printed legends 24 cleats)



Description	Size	Catalog Number
Blank - Black	3/4" x 24"	78192
Blank - Black	6" x 24"	78195
Blank - Black	5 1/2" x 5 1/2"	78196



#### Anti-Skid Cleats with Warning Message

- Made of B-916 grit coated polyester tape
- Cleat size: 6" x 24"
- Standard package: 24 cleats

Legend	Size	Catalog Number
CAUTION	6" X 24"	78160
WATCH YOUR STEP	6" x 24"	78163

## STEP 5

### Mark Emergency Evacuation Routes

**OSHA CFR 1910.37** Maintenance, safeguards, and operational features for exit routes.

**1910.37(b)** Lighting and marking must be adequate and appropriate.

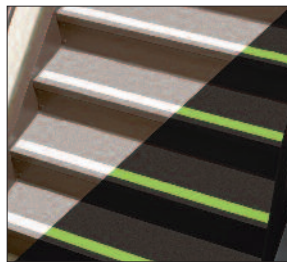
**1910.37(b)(2)** Each exit must be clearly visible and marked by a sign reading "EXIT".

**1910.37(b)(4)** If the direction of travel to the exit or exit discharge is not immediately apparent, signs must be posted along the exit access indicating the direction of travel to the nearest exit and exit discharge.

**1910.37(b)(6)** Each exit sign must be illuminated to a surface value of at least five foot-candles. ...Self-luminous signs that have a minimum luminance surface value of at least .06 foot lamberts are permitted.

### Glow-in-the-Dark Anti-Skid Tapes & Cleats

- Made from B-916 grit-coated polyester tape
- Material is non-toxic, non-radioactive, environmentally friendly and installs easily
- Tape and cleats comply with ASTM E-2072 and ASTM E2073 standard specifications for photoluminescent safety markings and standard test methods for luminance of photoluminescent markings



Catalog No.	Description	Size
99048	Glow-in-the-Dark ANTI-SKID Tape Roll	1" x 60'
99049	Glow-in-the-Dark ANTI-SKID Tape Roll	2" x 60'
99050	Glow-in-the-Dark ANTI-SKID Tape Roll	4" x 60'
99052	Glow-in-the-Dark ANTI-SKID Tape Roll	6" x 60'
99053	Glow-in-the-Dark ANTI-SKID Tape Roll	12" x 60'
99054	Glow-in-the-Dark ANTI-SKID Cleat Solid	6" x 24" (10/pack)
78162	Black with Glow Stripe	6" x 24" (24/pack)
78161	Black with Reflective Stripe	6" x 24" (24/pack)



[www.bradyid.com](http://www.bradyid.com)  
 Search Word: **bradyglo**

# Emergency Evacuation Marking

Visible in "Lights-Out" Conditions

**STEP  
5**

## BradyGlo™ 10+ hour material exceeds these standards:

- ASTM E2072-00/E2073-02/ E2030-02
- ASTM/E162/E648/E662, SMP800C
- IMO Resolution A. 752(18)
- ISO/CD 15370
- PSPA Standard 002 Part 2 1993 Class A Rev. 2: 09/99
- DIN 67 510, Parts 1-4
- NFPA 101 Life Safety Code 2000 7.10.7.2
- OSHA 1910.37
- Lloyd's Register Cert. 01/6007

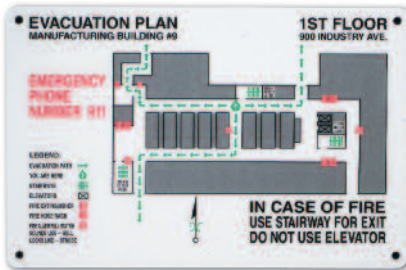
## Glow-in-the-Dark Floor Marking Tapes

- Made of B324 phosphorescent surface printed polyester
- Designed for safe LLL (Low Level Lighting) egress pathway marking during power outages and emergency situations
- Applies quickly and sticks tightly
- Each roll: 15 ft.

Stripes		Solid	
Width	Catalog Number	Width	Catalog Number
2"	76430	2"	76432
3"	76431	3"	76433

V-Style		Arrow-Style	
Width	Catalog No.	Width	Catalog No.
2"	90971	2"	90973
3"	90972	3"	90974



## Custom Emergency Evacuation Placards

- Full-color, permanent encapsulated signs
- Output from your artwork files (most Mac or Windows formats acceptable) or custom designed for you
- Printed on durable fiberglass or laminated material
- Turnkey solutions for newly constructed facilities or plant additions

Contact Brady to order



## BradyGlo™ UL-Listed Exit Signs

- Non-Radioactive, non-electric
- Low installation cost, explosion proof, maintenance free
- 7.5" x 13" signs have 6" letters
- Compliant to UL924, NFPA Life Safety Code 101, OSHA 1910
- Self-sticking arrows (included)

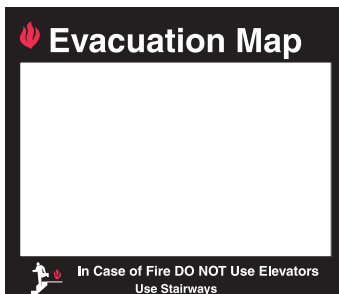
Catalog No.	Description
87807	Red Exit
87808	Green Exit



## BradyGlo™ Framed Exit Signs

- Use no electricity
- Non-toxic, non-radioactive, and install easily
- Punch-out, or field-applied chevrons provide direction
- 25 year warranty
- 8"H x 15"W

Description	Black	Red	Green	White
Wall Mounted	37851	90885	90887	80753
Single-sided w/bracket	38097	90839	90841	80754
Double-sided w/bracket	38098	90840	90842	80755



## Emergency Evacuation Insert Frames

Attractive, clear acrylic frames hold your custom evacuation maps and are easily changed when updates are needed.

- Simply print and insert your map into the frame
- Non-glare, scratch resistant finish, 2 adhesive strips on back for easy installation



Catalog #	Size (H x W)	Material
102850	11" x 11½"/holds a 8½"x 11" insert	Standard
102852	15" x 17½"/holds a 11"x 17" insert	Standard
102851	11" x 11½"/holds a 8½"x 11" insert	Luminous
102853	15" x 17½"/holds a 11"x 17" insert	Luminous



# Safety Signage & Labeling

## STEP 6

### Post Safety Signage & Labeling

**CFR 1910.22(b)(2)** Permanent aisles and passageways must be appropriately marked.  
**OSHA CFR 1910.144 and ANSI Z535.4-2007** Red (Red/White) shall be the basic color for the identification of Danger and fire protection equipment and apparatus. Yellow (Yellow/Black) shall be the basic color for designating caution and for marking physical hazards. Use black and white for traffic and housekeeping markings.

**1910.145(c)(3)** Safety Instruction signs shall be used where there is a need for general instructions and suggestions relative to safety measures.

### Fall Protection Signs

Materials:	Outdoor Life
FG - Premium Fiberglass	25yrs
AL - BradyTuff™ Aluminum	8yrs
PL - BradyTuff™ Plastic	2yrs
SS - Self-Sticking Polyester	8yrs



FG - 7 x 10 - 70527  
 FG - 10 x 14 - 70528  
 AL - 7 x 10 - 43175  
 AL - 10 x 14 - 43176  
 PL - 7 x 10 - 25598  
 PL - 10 x 14 - 25599  
 SS - 3½ x 5 - 87783  
 SS - 7 x 10 - 85085  
 SS - 10 x 14 - 85086



FG - 7 x 10 - 47080  
 FG - 10 x 14 - 47124  
 AL - 7 x 10 - 43177  
 AL - 10 x 14 - 43178  
 PL - 7 x 10 - 25600  
 PL - 10 x 14 - 25601  
 SS - 3½ x 5 - 87784  
 SS - 7 x 10 - 85087  
 SS - 10 x 14 - 85088



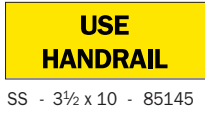
FG - 7 x 10 - 74350  
 AL - 7 x 10 - 43179  
 AL - 10 x 14 - 43180  
 PL - 7 x 10 - 25602  
 PL - 10 x 14 - 25603  
 SS - 7 x 10 - 85089  
 SS - 10 x 14 - 85090



FG - 7 x 10 - 69508  
 AL - 7 x 10 - 43181  
 AL - 10 x 14 - 43182  
 PL - 7 x 10 - 25604  
 PL - 10 x 14 - 25605  
 SS - 7 x 10 - 85091  
 SS - 10 x 14 - 85092



FG - 7 x 10 - 74680  
 AL - 7 x 10 - 43185  
 AL - 10 x 14 - 43186  
 PL - 7 x 10 - 25608  
 PL - 10 x 14 - 25609  
 SS - 7 x 10 - 85095  
 SS - 10 x 14 - 85096



SS - 3½ x 10 - 85145



FG - 7 x 17 - 69551



FG - 10 x 14 - 74455  
 AL - 7 x 10 - 43187  
 AL - 10 x 14 - 43188  
 PL - 7 x 10 - 25610  
 PL - 10 x 14 - 25611  
 SS - 3½ x 5 - 87782  
 SS - 7 x 10 - 85097  
 SS - 10 x 14 - 85098



FG - 7 x 10 - 74299  
 AL - 7 x 10 - 43195  
 AL - 10 x 14 - 43196  
 PL - 7 x 10 - 25618  
 PL - 10 x 14 - 25619  
 SS - 7 x 10 - 85115  
 SS - 10 x 14 - 85116



FG - 7 x 10 - 73450  
 AL - 7 x 10 - 42588  
 AL - 10 x 14 - 42589  
 PL - 7 x 10 - 23065  
 PL - 10 x 14 - 23066  
 SS - 7 x 10 - 88225  
 SS - 10 x 14 - 88226



FG - 7 x 10 - 70572  
 AL - 7 x 10 - 43209  
 AL - 10 x 14 - 43210  
 PL - 7 x 10 - 25632  
 PL - 10 x 14 - 25633  
 SS - 7 x 10 - 85135  
 SS - 10 x 14 - 85136

### Floor Safety Signs



97615



92404



89200 49807



97610



97611



49061 49060

Brady has over 20,000 stock signs available.

Custom signs also available, contact your local Brady Distributor for more information.

[www.bradyid.com](http://www.bradyid.com)

Search Word:



signs



## GlobalMark® 2 Industrial Label Maker

Satisfy all of your OSHA Identification Requirements. Print Slips/Trips/Falls Safety Signs, Lockout Procedures, Tags, Valve Tags, Equipment I.D. and so much more!

- Color touch screen interface... Quick & Easy!
- Label widths up to 4"
- Multicolor spot printing or full-color process printing
- Specialty materials including tag stock, magnetic, reflective & phosphorescent (10 hour glow)
- Cuts characters & shapes!
- Patent # D481,415



**GLOBALMARK® 2**  
INDUSTRIAL LABEL MAKER

Catalog No	Description
76801	Color & Cut GlobalMark® 2
76800	MultiColor GlobalMark® 2
76798	MonoColor GlobalMark® 2



Tapes for indoor and outdoor use.



Stock & Custom Sign Messages



Print to Tagstock



Glow-In-The Dark Messaging

[www.bradyid.com](http://www.bradyid.com)  
Search Word:  
**globalmark**

## HandiMark® Portable Label Maker

Designed to help you satisfy your OSHA Slips/Trips/Falls, Lockout, HazCom, Arc Flash and General Equipment Identification Requirements.

- .5", 1" or 2" tape widths
- Large characters – Hundreds of character sizes from .08" to 1.7"
- Super-tough outdoor grade vinyls
- 15 tape colors, 7 print colors
- Specialty materials: Reflective, tamper resistant or repositionable vinyl
- Thermal transfer print...no smearing!
- 113 built-in industrial symbols
- Bar codes, sequencing & memory built-in!
- Portable – battery or AC operation

BRADY **HANDIMark**  
Portable Label Maker

Description	Catalog Number
HandiMark® Label Maker (Includes items listed to the right)	42001



HandiMark® goes where you go!



Repositionable Vinyl



Floors & Walkways



Stairs & Ladders



Bins & Shelves

**Includes**

- HandiMark® Portable Label Maker
- Rechargeable Battery
- Battery Charger
- 25' roll of 2" white vinyl tape
- Black ribbon
- Hard carrying case
- Symbols reference chart



# Temporary Hazards / Scaffold & Ladder Safety

## STEP 7 Mark Temporary Maintenance and Janitorial Hazards



### Floor Stands

- Alert employees and visitors of potential floor hazards
- Message appears on both sides
- Standard package: 1 unit

Heavy Duty		Caution Header	
Legend	Catalog Number	Legend	Catalog Number
WET FLOOR	104809	WATCH YOUR STEP	47244
CAUTION	104810	WET FLOOR	47245
CLOSED	104811	SLIPPERY FLOOR	47242
Blank	104808	CHEMICAL SPILL	47241
25" Height		TRIPPING HAZARD	47243
		20" Height	



### Barricade Tape

- Provides fast, on-the-spot warning
- Made of non-adhesive B-912 Polyethylene
- 3" Width

Legend	Catalog Number	
	200'	500'
CAUTION	91212	91100
CAUTION DO NOT ENTER	91224	91102
DANGER	91200	NA
	91214	91104
AUTHORIZED PERSONNEL ONLY	91468	NA
CAUTION CONSTRUCTION AREA	91217	91101



### Warning Posts & Chain

- Barricade potentially hazardous areas with portable, non-rusting, polyethylene posts & chain
- Black & Yellow striped posts come with tops and fillable bases
- Not intended to support heavy weight

Color	Catalog Number	
	Box of 1	Box of 6
Black & Yellow	92122	92123

### Warning Chain

Color	Catalog Number		
	Size 1 1/2"	Size 2"	Size 3"
Yellow 100'	78234	78238	37860

## STEP 8 Inspect Scaffolds & Ladders

OSHA 1926.1053(a)(12), (b)(17)(1)(11) and CFR 1910.25(d)(1)(x) Ladders shall be inspected frequently and those which have developed defects shall be withdrawn from service for repair or destruction and tagged or marked as "Dangerous, Do Not Use."



### Scaffolding Tags

- SCAFFTAG® provides system, procedural and legal compliance
- Provides a clear inspection trail giving integrity and control of work carried out
- Essential for companies working with ISO9000 clients

SCAFFTAG				
Cat. No.	Description	Qty.	Color	Size
104111	Holders	10/Box	White	11 3/4" x 3 1/2"
104112	Holders	10/Box	Red	11 3/4" x 3 1/2"
104113	Inspection Inserts	100/Pkg	Green	3 1/4" x 7 5/8"
104114	Caution Inserts	100/Pkg	Yellow	3 1/4" x 7 5/8"
104115	Standard Kit*	1/Kit	White	
104116	Scafftag II Holder	10/Box	White	11 1/2" x 6"
104117	Inspection Inserts	100/Pkg	Green	5 3/4" x 7 5/8"
104118	Scafftag II Kit*	1/Kit		

\*Kits include 10 Holders, 20 Inserts and 1 Pen



### Ladder Tags

LADDERTAG™ is a complete ladder safety management system. Regulations require ladders to be checked for damage, faults and wear before use by an authorized user, and may assist with the requirements of CFR 1926.1053 (a) (12), (b) (17) (i) (ii) and CFR 1910.25 (d) (1) (X)

LADDERTAG				
Cat. No.	Desc.	Qty.	Color	Size
104125	Holder	10/BOX	White	2 1/4" x 8 3/4"
104126	Inserts	100/PK	Yellow	2" x 6 1/2"
104127	Kit*	1/KIT		

\*Kit includes 10 holders, 10 inserts and 1 pen

[www.bradyid.com](http://www.bradyid.com)  
 Search Word: **scafftag**



### Micro Tag

A safety system which is particularly useful for identifying small plant, equipment, lifting gear and safety harnesses. Color coded and date qualified, the system also has the facility to render equipment in a 'prohibition status' should it be found to be faulty between inspection dates. Meets the requirements for OSHA CFR 1926.502 (d) (21) Personal Fall Arrest systems.

### MICROTAG & INSERTS

Cat No.	Description	Qty.	Color	Size
104143	Microtag Kit*	1		
104152	Next Inspection Date Due	100	Green	1 7/8" x 1 1/4"
104155	Next Inspection Date Due	100	Red	1 7/8" x 1 1/4"
104157	Next Inspection Date Due	100	Yellow	1 7/8" x 1 1/4"

\*Kit includes 20 holders, 40 cables ties and 1 pen





## Control and Clean Oil & Spills

**CFR 1910.22(a)(2)** The floor of every workroom must be maintained in a clean and, so far as possible, a dry condition. Where wet processes are used, drainage shall be maintained, and ... dry standing places should be provided where practicable.

**STEP  
9**

## Oil Sorbents



### ENV

- Contractor grade oil-only sorbents
- Absorbs petroleum-based liquids while repelling water
- Low cost, industrial alternative



### OP

- Absorbs petroleum-based oils, solvents and other non-water soluble liquids
- Multi-ply heavyweight quality you can count on
- Effective in both industrial and outdoor environmental applications



### Economy Spill Kit

- Absorbs 5 gallons
- Contents: 10 Pads (15" x 19")  
2 Socks (3" x 4")  
Nitrile gloves  
Disposable box & Instructions

## Universal Sorbents (Water, Petroleum and Chemical-Based Fluids)



### MRO Plus

- The standard in all-purpose, gray maintenance sorbents
- Absorbs all industrial liquids
- Three-ply construction makes it stronger, more durable and reduces lint
- Use anywhere there is a leak, drip or spill: production / machine areas, assembly lines, storage areas



### UXT (Xtra Tough)

- Best general purpose absorbent
- Three-ply construction including a low-linting coverstock
- Abrasion resistant and non-abrasive "wipe down" sorbent
- Maximum strength and absorbency for cleaning and wiping surfaces
- Perforated to help you use only what you need - reduce waste



### Battlemat

- Tough, long lasting
- Ideal as walk-on mats
- Suitable for single-use absorbents

[www.bradyid.com](http://www.bradyid.com)

Search Word:



spc



### Sorbent Center

- Sorbent deployment station or mobile spill control unit; 26"h x 50"w x 20"d
- Fill with almost any SPC sorbent product
- Wall mountable and floor stackable
- Stack multiple to make a custom solution

Catalog No.	Type	Size	Quantity	Description	Use
ENV100	Pad	15" x 19"	100/bale	Economy, heavy weight	Oil**
ENV300	Pad	15" x 19"	100/bale	Economy, medium weight	Oil**
ENV150	Roll	30" x 150'	1/bale	Medium weight, value roll	Oil**
SKO-PP	Kit		5/case	Economy Spill Kit	Oil**
SKA-PP	Kit		5/case	Economy Spill Kit - Universal	All Industrial Liquids
SKH-PP	Kit		5/case	Economy Spill Kit - Chemical	Chemical
OP100	Pad	15" x 19"	100/case	Full size, heavy weight, perforated	Oil**
OP15P	Roll	15" x 150'	1/case	Heavy weight, new efficient width	Oil**
MRO100	Pad	15" x 19"	100/case	Full size pad, heavy weight, perforated	All Industrial Liquids*
MRO300	Pad	15" x 19"	100/bale	Medium weight pad	All Industrial Liquids*
MRO15P	Roll	15" x 150'	1/case	Heavy weight, perforated every 18"	All Industrial Liquids*
UXT100	Pad	15" x 19"	100/case	Full size, heavy weight, perforated	All Industrial Liquids*
UXT200	Pad	15" x 19"	200/case	Full size, light weight, perforated	All Industrial Liquids*
UXT15P	Roll	15" x 150'	1/case	Heavy weight, perforated every 18"	All Industrial Liquids*
SIR36	Roll	36" x 300'	1/bale	Sorbent Industrial Rug	All Industrial Liquids*
BM30	Roll	30" x 150'	1/case	Heavy weight, camo, double perforated roll	All Industrial Liquids*
BM15	Roll	15" x 150'	1/case	Heavy weight, camo, double-perforated roll	All Industrial Liquids*
SC-3000	Center		1	Unassembled Sorbent Center	Sorbent Storage
SC-D15	Dowel	15"	1	Dowel Rod for Rolls	Sorbent Storage
SC-D40	Dowel	40"	1	Dowel Rod for Rolls	Sorbent Storage
SC-4	Casters		5	Casters for Sorbent Center	Sorbent Storage

\*Water, petroleum and chemical-based fluids

\*\* Oil only sorbents will not absorb water, and will float indefinitely

**STEP  
10**

**Employee Slips / Trips / Falls Training**

## Slips, Trips and Falls - Interactive CD-ROM Training

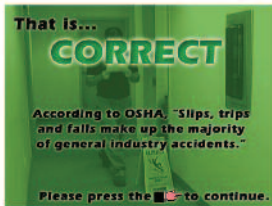
**High-impact training covering the essentials of slips, trips and falls.**

Most employees don't give much thought to the prospect of slipping, tripping or even falling on the job. Yet these types of accidents account for more workplace injuries annually than any other accident category. Many of these injuries can be disabling... or even fatal.

**Slips, Trips and Falls**, CD-ROM format, shows employees the situations that can lead to slips, trips and falls, and what they can do to avoid or prevent these accidents.

This training covers the following topics:

- Why slips, trips and falls occur
- Common causes of accidents
- Potential health effects of resulting injuries
- Techniques used to avoid injury
- The importance of safety shoes
- How to "fall" safely
- And more!



Using a powerful combination of audio, full-motion video, text, topic tests, and colorful graphics, Slips, Trips and Falls provides cost-effective, easy-to-use training. It's divided into topic-based lessons so information is easily understood and retained.



Cat No.	Description
STF-TRAINING	Slips/Trips/Falls Training CD-Rom

### Get Started With Step 1 Now!

- Contact your local Brady sales representative or distributor to set up an On-Site Slips, Trips & Falls Audit for your facility, or call Brady's Services Group at 1-800-496-4040.
- Review your current implemented Walking & Working Surfaces program for completeness using this 10 Steps to Prevention guide. Then contact your distributor or Brady for the products or services you need.

**Distributed By:**

Brady Worldwide, Inc.  
6555 W. Good Hope Rd.  
Milwaukee, WI 53223  
1-888-272-3946  
www.bradyid.com

Brady Canada  
355 Apple Creek Blvd.  
Markham, ON L3R 9X7  
1-800-272-3946  
www.bradycanada.com



Y897402

© 2008 Brady Worldwide, Inc.  
All Rights Reserved.  
Printed in U.S.A.

07-08-AA-5K

