

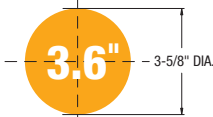
Low Voltage Recess Lighting

Catalog Number

- 9791 White / Black Baffle
- 9792 Bronze / Black Baffle
- 9793 Aluminum / Black Baffle
- 9794 White / White Baffle
- 9795 Champagne / Black Baffle

• Ceiling Cut-out

3 5/8" dia



Hole Cut-out

• Adjustability

- 90° Adjustability
- 358° Rotation of center swivel trim

• Lamp

Maximum 50W 12V MR16 bi-pin (lamp not included)

• Construction

- Die Cast A380 Aluminum Trim
- Spring Steel mounting clips
- Socket Ceramic bi-pin socket (supplied with housing)

• Listings

- UL 1598 listed
- © Design copyright



• Housings



3.6 New Construction Housing

DX Integral Magnetic Transformer
120V/11.6V, 35W-50W max. MR16 bi-pin

DX277 Integral Magnetic Transformer
277V/11.6V, max. 50W MR16 bi-pin

DX75 Integral Magnetic Transformer
120V/11.6V, max. 75W MR16 bi-pin



3.6 Remodel Housing

DXR Integral Magnetic Transformer
120V/11.6V, max. 50W MR16 bi-pin

DXR277 Integral Magnetic Transformer
277V/11.6V, max. 50W MR16 bi-pin

DXR35 Integral Magnetic Transformer
120V/11.6V, max. 35W MR16 bi-pin



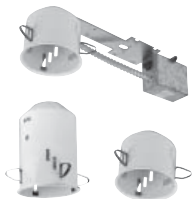
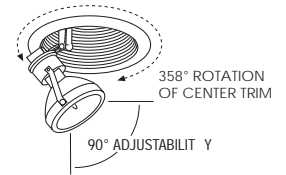
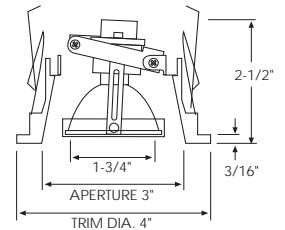
3.6 Insulated Ceiling Housing

DXIC Integral Electronic Transformer
120V/11.6V, max. 50W MR16 bi-pin

DXIC-AT Air Tight Integral Electronic Transformer
120V/11.6V, max. 50W MR16 bi-pin

DXICM Integral Magnetic Transformer
120V/11.6V, max. 50W MR16 bi-pin

DXICM-AT Air Tight Integral Magnetic Transformer
120V/11.6V, max. 50W MR16 bi-pin



3.6 Remote Transformer Housing

TCJ Tall Can w/J-Box & Thermal Protector
120V/11.6V, max. 50W MR16 bi-pin

SCJ Short Can w/J-Box & Thermal Protector
120V/11.6V, max. 35W MR16 bi-pin

TC Tall Can
120V/11.6V, max. 50W MR16 bi-pin

SC Short Can
120V/11.6V, max. 35W MR16 bi-pin

Trim	Housings	MR Optical Accessories	Lamp
<input type="checkbox"/> 9791 White / Black Baffle <input type="checkbox"/> 9792 Bronze / Black Baffle <input type="checkbox"/> 9793 Aluminum / Black Baffle <input type="checkbox"/> 9794 White / White Baffle <input type="checkbox"/> 9795 Champagne / Black Baffle	<input type="checkbox"/> DX <input type="checkbox"/> DX277 <input type="checkbox"/> DX75 <input type="checkbox"/> DXR <input type="checkbox"/> DXR277 <input type="checkbox"/> DXR35 <input type="checkbox"/> DXIC <input type="checkbox"/> DXIC-AT <input type="checkbox"/> DXICM <input type="checkbox"/> DXICM-AT <input type="checkbox"/> TCJ <input type="checkbox"/> SCJ <input type="checkbox"/> TC <input type="checkbox"/> SC	<input type="checkbox"/> 0-14 <input type="checkbox"/> 0-15 <input type="checkbox"/> 0-16 <input type="checkbox"/> 0-17 <input type="checkbox"/> 0-18 <input type="checkbox"/> 0-13 <input type="checkbox"/> 0-30 <input type="checkbox"/> 0-31 <input type="checkbox"/> 0-34	<hr/>