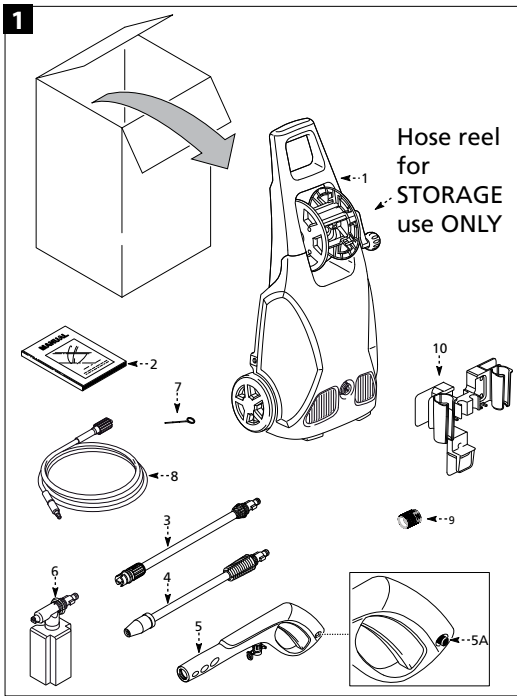
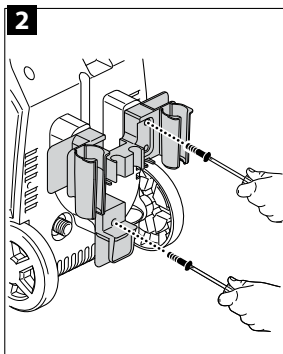


## ASSEMBLY

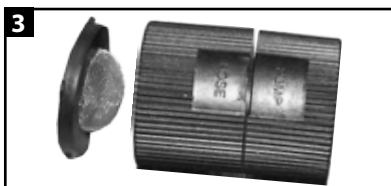


### PACKAGE CONTENT:

1. Pressure Water Unit
2. Manual
3. Adjustable Spray Nozzle
4. Turbo Nozzle
5. Gun
6. Detergent Tank
7. Nozzle Cleaning Tool
8. High Pressure Hose
9. Garden Hose Fitting
10. Accessories Holder Gun Safety Button (5A)

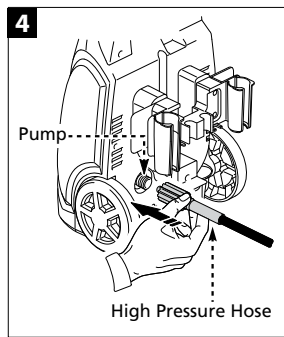


2. Install with supplied screws. Tools needed 1 phillips screwdriver.

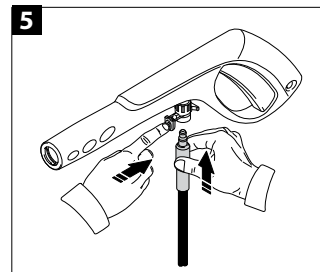


3. Garden hose adapter. Marked Pump and Hose for easy assembly. Washer/filter may need to be re-installed as it may separate during shipping. Place washer/filter into the hose side as illustrated.

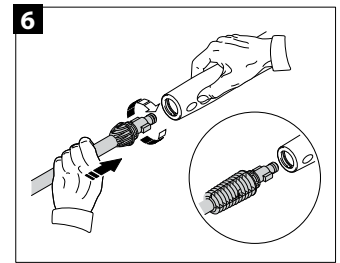
## OPERATIONS



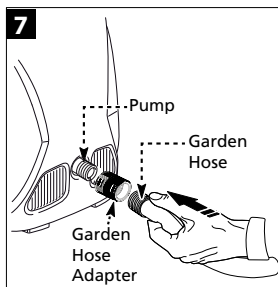
4. a) Remove shipping cap from back of pressure washer.
- b) Install threaded end of high pressure hose by pushing into back of pressure washer then turn clockwise until tight.



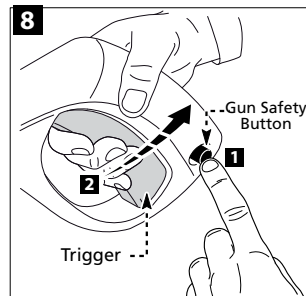
5. a) Install non-threaded end of high pressure hose to gun.
- b) Press release button on bottom of gun toward back of the gun, then insert high pressure hose.



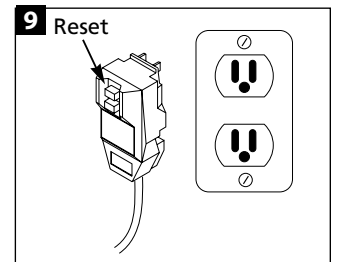
6. a) Insert lance into the end of high pressure hose to gun by pushing and turning clockwise at the same time.
- b) Push and turn counterclockwise to remove.



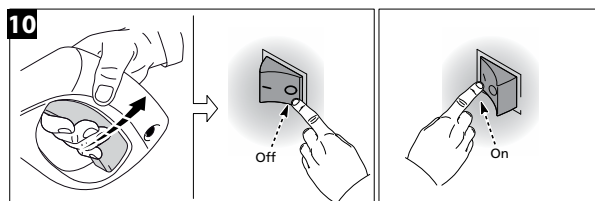
7. a) Remove shipping cap from front of pressure washer.
- b) Attach garden hose adapter with the pump end onto the front of the pressure washer.
- c) Make sure filter is in place on hose side attach the garden hose.



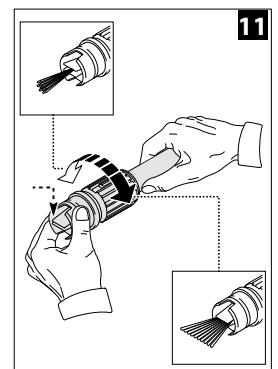
8. Activate the lock by holding the gun and push the lock from left to right. Squeeze trigger to make sure the trigger does not move. The safety trigger lock should be locked at all times when pressure washer is not in use.



9. a) Plug the power cord into a grounded 120V outlet and press the reset button as shown.
- b) THIS MUST BE DONE EACH TIME THE UNIT IS PLUGGED IN AN OUTLET.

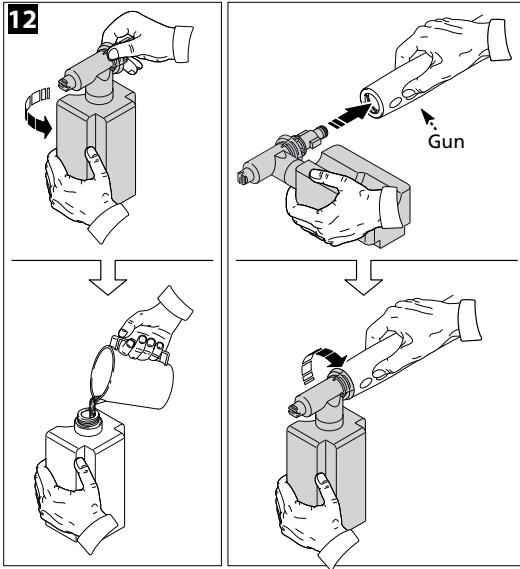


10. a) Unlock gun push lock from right to left.
- b) Pull trigger then turn on power switch located on back of pressure washer.



11. Spray pattern shape and intensity can be changed by twisting the spray adjuster at the end of the lance. KEEP HANDS CLEAR OF THE FRONT OF THE LANCE TO PREVENT INJURY. NOTE: Turbo nozzle is not adjustable.

## OPERATIONS CONTINUED

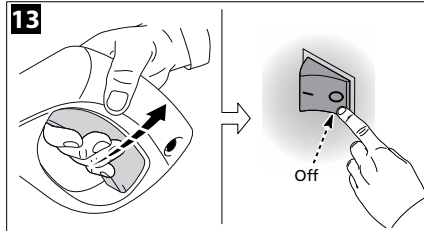


12. a) Detergent bottle can only be attached directly to the gun. Remove lance before attaching.

b) Attach detergent bottle the same as the lance by pushing into gun and turning clockwise at the same time. Reverse for removing.

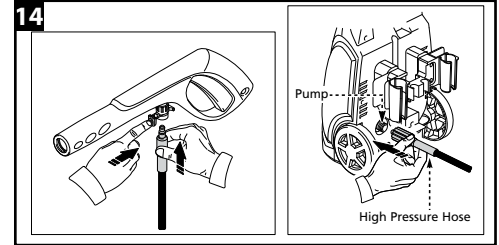
c) The use of detergents can dramatically reduce cleaning time and assist in the removal of difficult stains. Some detergents have been customized for pressure washer use on specific cleaning tasks. These detergents are approximately as thick as water. **NOTE: The use of thicker detergents, such as dish soap, will clog the chemical injection system and prevent the application of the detergent.**

## UNIT STORAGE

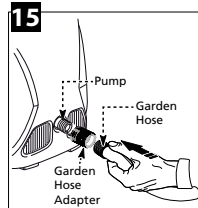


13. a) Pull trigger then turn off power switch located on back of pressure washer.

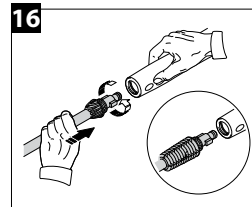
b) After turning off power, pull trigger to relieve line pressure before removing spray gun and hose.



14. Remove high pressure hose from gun and pressure washer.



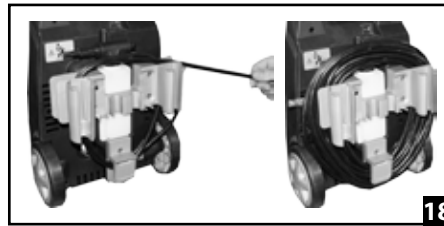
15. Disconnect garden hose. Remove garden hose adapter (optional).



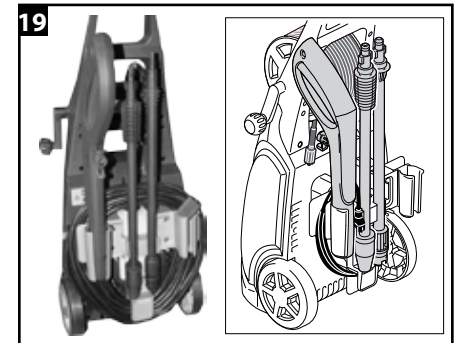
16. Push and turn counterclockwise to remove.



17. Place detergent bottle into accessories holder.

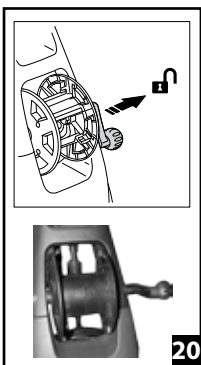


18. Wrap power cord around accessories holder in slots provided on sides and bottom.



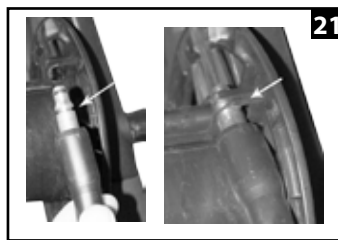
19. Place gun in left slot, lances are placed in center slots and garden hose adapter placed in right slot on holder.

## Hose reel is for storage only.



20. a) Unlock hose reel by pulling handle out.

b) Turn handle so knob is pointing to the front of the machine.



21. Place notch on high pressure hose in plastic notch on hose reel.

**NOTE: Hose reel is for STORAGE only.**

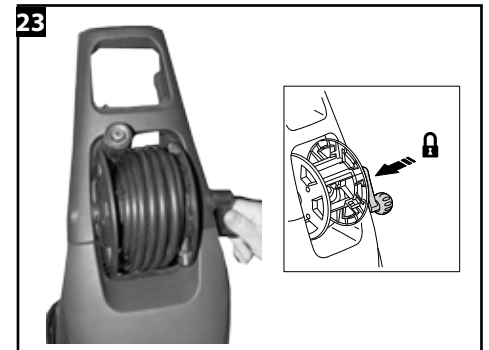


22. a) Using right hand turn handle away from you to wind up hose.

b) Using left hand guide hose across.

c) When you reach tabs on the left side start guiding hose back to the right.

d) Continue guiding hose back and forth until entire hose is on the reel.



23. a) Wind until hose end catches at the top of the reel.

b) Push in handle to lock reel.