

### SUGGESTED TOOLS AND MATERIALS



Philips Screwdriver



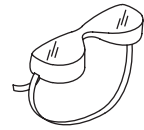
Level



Drill

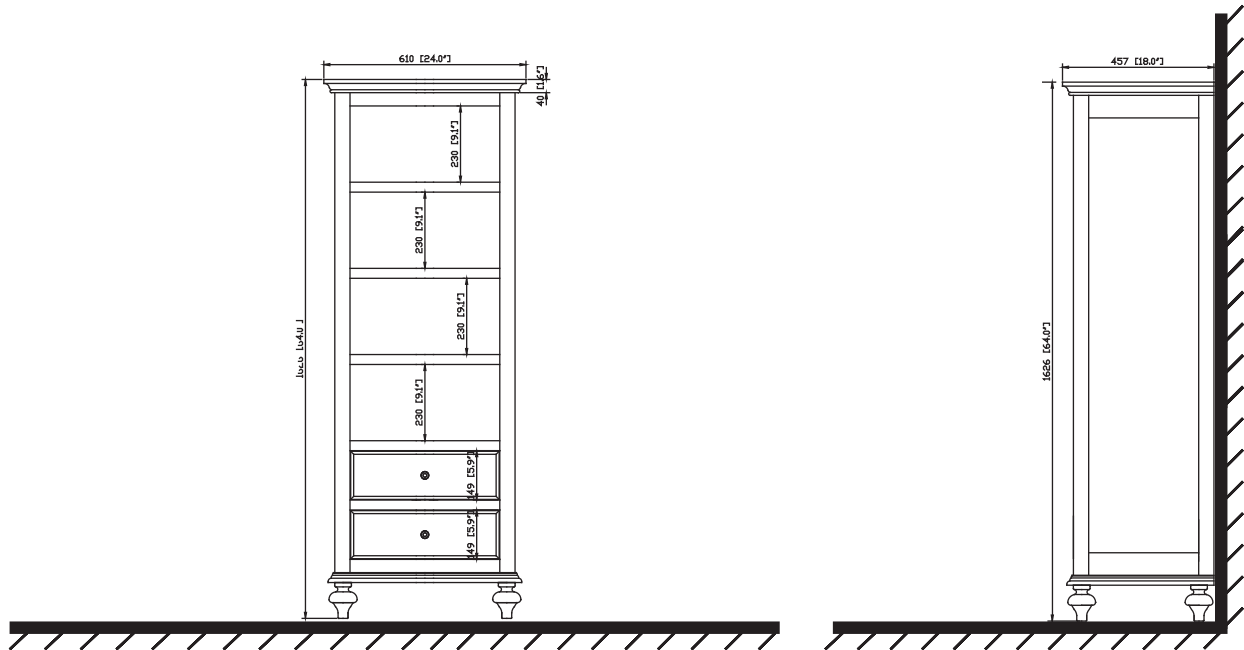


Tape Measure



Safety Glasses

### ROUGHING IN



### INSTALLATION INSTRUCTIONS

- Position the linen tower against the finished wall. If necessary, turn the leg levelers to achieve level.
- The linen tower legs are removable per your installation needs.

### CARE AND CLEANING OF LINEN TOWER

Dust the linen tower frequently with a clean, soft, dry, lint-free cloth, as well as polish it on a regular basis. Clean the surface by rubbing in the direction of the grain. Avoid using silicone cleaners and waxes.

Clean up excess water and spills immediately. Use blotting rather than a wiping action. Water left over a long period of time will cause white spots in the finish. Please note that some chemicals may damage the finish.