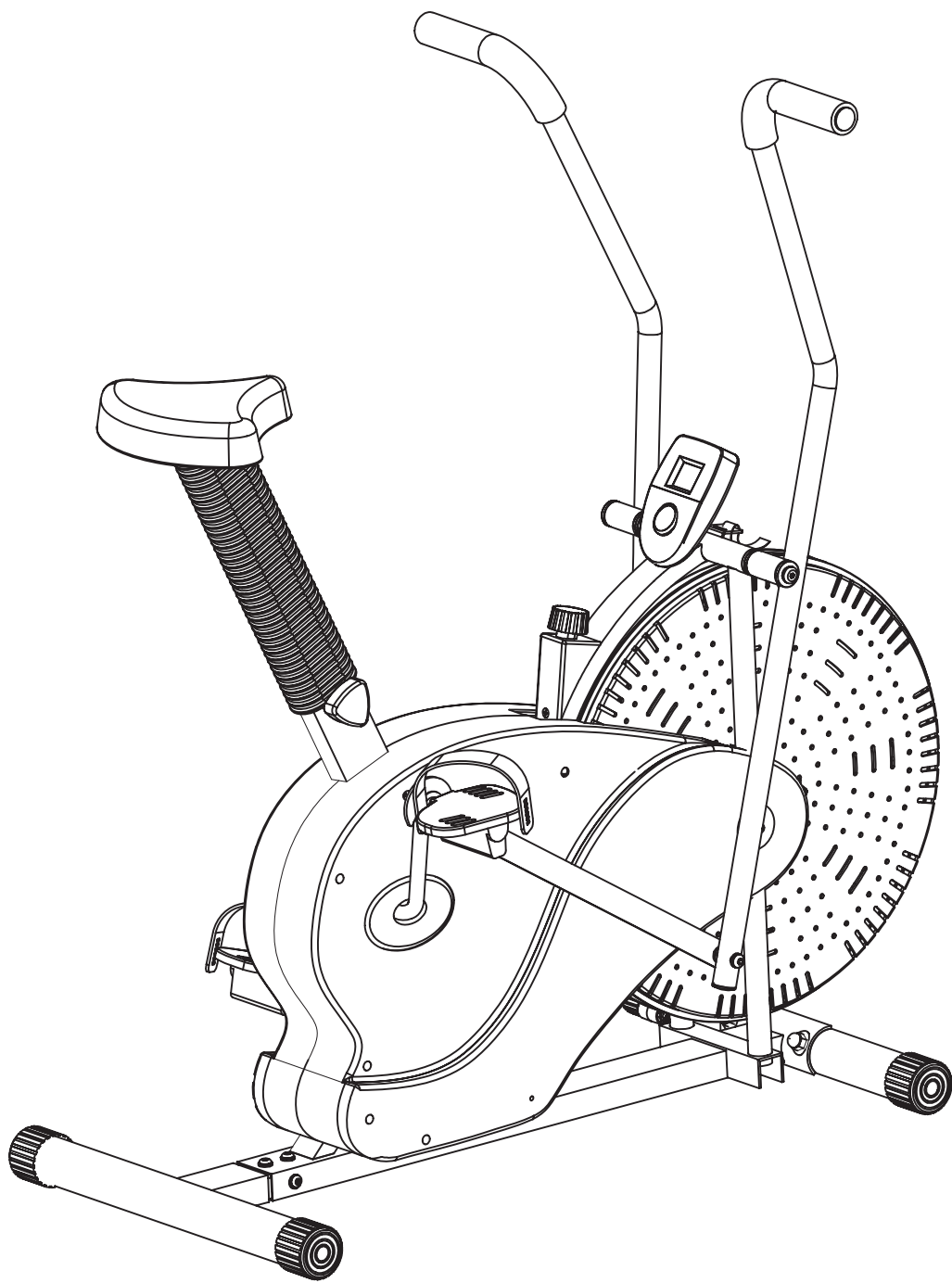


# BODYRider BRF 700

## Fan Bike



\* This item is for consumer use only and it is not meant for commercial use.

## OWNER'S MANUAL





# General Information



## Safety

Before you undertake any exercise program, please be sure to consult with your doctor. Frequent strenuous exercise should be approved by your doctor and proper use of your product is essential. Please read this manual carefully before commencing the assembly of your product or starting to exercise.

- Please keep all children away from this item when in use. Do not allow children to climb or play on them when they are not in use.
- Supervise teenagers while they use this unit.
- For your own safety, always ensure that there is at least 3 feet of free space in all directions around your product while you are exercising.
- Regularly check to see that all nuts, bolts and fittings are securely tightened. Periodically check all moving parts for obvious signs of wear or damage.
- Clean only with a damp cloth, do not use solvent cleaners. If you are in any doubt, do not use your product; contact CUSTOMER SUPPORT.
- Before use, always ensure that your product is positioned on a solid, flat surface. If necessary, use a rubber mat underneath to reduce the possibility of slipping.
- Always wear appropriate clothing and footwear such as training shoes when exercising. Do not wear loose clothing that could become caught in moving parts during exercise.
- Do not use this unit if it is not functioning properly or if it is not fully assembled.
- Do not use this unit for commercial purposes.

## Storage and Use

Your product is intended for use in clean dry conditions. You should avoid storage in excessively cold or damp places as this may lead to corrosion and other related problems.

## Weight Limit

Your product is suitable for users weighing: 250 pounds or less.



## Warranty

Body Flex Sports warrants your product for a period of 1 year for the frame and 90 days on all parts if the item is used for the intended purpose, properly maintained and not used commercially. Any alterations or incorrect assembly of the product will void this warranty.

Proof of purchase must be presented for any warranty validation (no exceptions). This warranty applies to the original purchaser only and is not transferable.

This warranty does not cover abuse or defects caused during use, storage or assembly.

During the warranty period, Body Flex Sports reserves the right to:

- a). provide replacement parts to the purchaser in an effort to repair the item.
- b). repair the product returned to our warehouse (at the purchaser's cost).
- c). replace the product if neither of the two previously mentioned actions effect repair.

This warranty does not cover normal wear and tear on upholstery.



## Questions

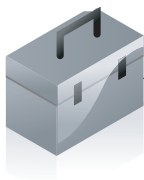
If you have any questions concerning the assembly of your item or if any parts are missing, please DO NOT RETURN THE ITEM TO THE STORE OR CONTACT THE RETAILER. Our dedicated customer service staff can help you with any questions you may have regarding the assembly of this unit and can also mail you replacement parts.



## Customer Support

Customer Support is open 9:00 a.m. to 5:00 p.m. (Pacific Time) Monday through Friday. Please contact us by any of the following means.

Body Flex Sports, Inc.  
21717 Ferrero Parkway, Walnut, CA 91789  
Telephone: (888) 266 - 6789  
Fax: (909) 598 - 6707  
Email: [info@bodyflexsports.com](mailto:info@bodyflexsports.com)



# Hardware & Tool List

The following hardware is used to assemble your unit. Please take a moment to familiarize yourself with these items.  
**PLEASE NOTE:** some of these parts may have already been pre-assembled on your unit.

## Bolt



#13. Bolt (M10x18 mm)

[2 pieces]

Pre-assembled



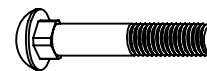
#18. Bolt (M8x43 mm)

[2 pieces]



#24. Bolt (M8x16 mm)

[4 pieces]



#26. Carriage Bolt (M10x57 mm)

[2 pieces]

## Nut



#11. Nylon Nut (M8)

[3 pieces]

Pre-assembled



#20. Nylon Nut (M8)

[2 pieces]



#23L. Left Nylon Nut

[1 piece]



#23R. Right Nylon Nut

[1 piece]



#28. Cap Nut (M10)

[2 pieces]

## Washer



#10. Washer (M8)

[3 pieces]

Pre-assembled



#14. Spring Washer (M10)

[2 pieces]

Pre-assembled



#15. D Shape Washer (M10)

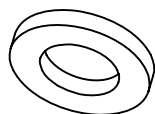
[2 pieces]

Pre-assembled



#19. Washer (M8)

[8 pieces]



#21. Big Washer

[2 pieces]



#25. Spring Washer (M8)

[4 pieces]



#27. Arc Washer (M10)

[2 pieces]

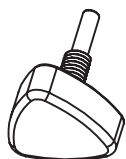


#29. Special Washer

[2 pieces]

Pre-assembled

## Knob



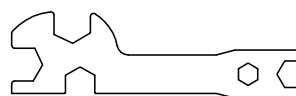
#17. Knob (M12) [1 piece]

## Bushing

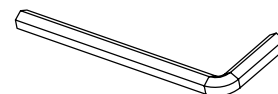


#22. Bushing [2 pieces]

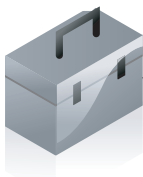
## Tool



S10-S13-S15-S17-S19 [1 piece]



6 mm [2 pieces]



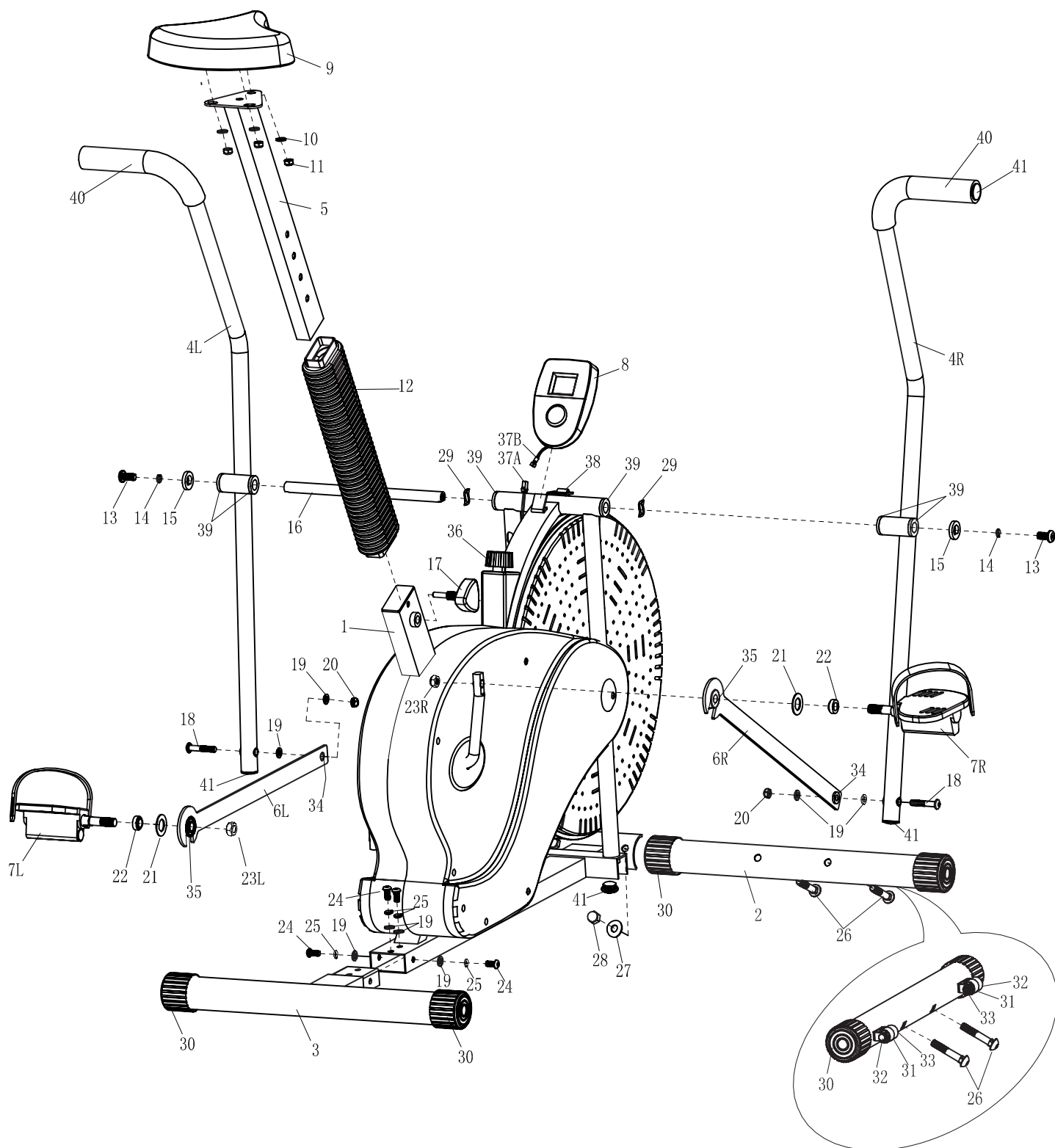
# Parts Listing

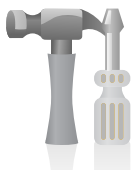
---

#	Description	#	Description
1	Main Frame	21	Big Washer
2	Front Stabilizer	22	Bushing
3	Rear Stabilizer	23L	Left Nylon Nut
4L	Left Handlebar	23R	Right Nylon Nut
4R	Right Handlebar	24	Bolt (M8x16 mm)
5	Seat Tube	25	Spring Washer (M8)
6L	Left Linkage	26	Carriage Bolt (M10x57 mm)
6R	Right Linkage	27	Arc Washer (M10)
7L	Left Pedal	28	Cap Nut (M10)
7R	Right Pedal	29	Special Washer
8	Monitor	30	Round Cap (50)
9	Seat	31	Front Roller
10	Washer (M8)	32	Hex Bolt (M6x48 mm)
11	Nylon Nut (M8)	33	Nylon Nut (M6)
12	Bellows	34	Bushing
13	Bolt (M10x18 mm)	35	Bearing
14	Spring Washer (M10)	36	Tension Control
15	D Shape Washer (M10)	37A	Monitor Wire (Lower)
16	Handlebar Axle	37B	Monitor Wire (Upper)
17	Knob (M12)	38	Friction Belt
18	Bolt (M8x43 mm)	39	Bushing
19	Washer (M8)	40	Foam Grip
20	Nylon Nut (M8)	41	Round Cap (25)



# Exploded Diagram





# Assembly Instructions

## Assembly Step 1

Secure the **Front Stabilizer (#2)** to the **Main Frame (#1)** with two **Carriage Bolts (#26)**, two **Arc Washers (#27)** and two **Cap Nuts (#28)**. Note: There are built in rollers on the **Front Stabilizer (#2)** to easily relocate the fan bike.

## Hardware Required

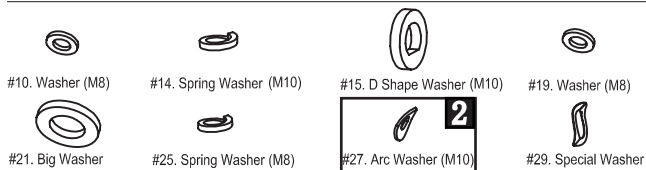
### Bolt



### Nut



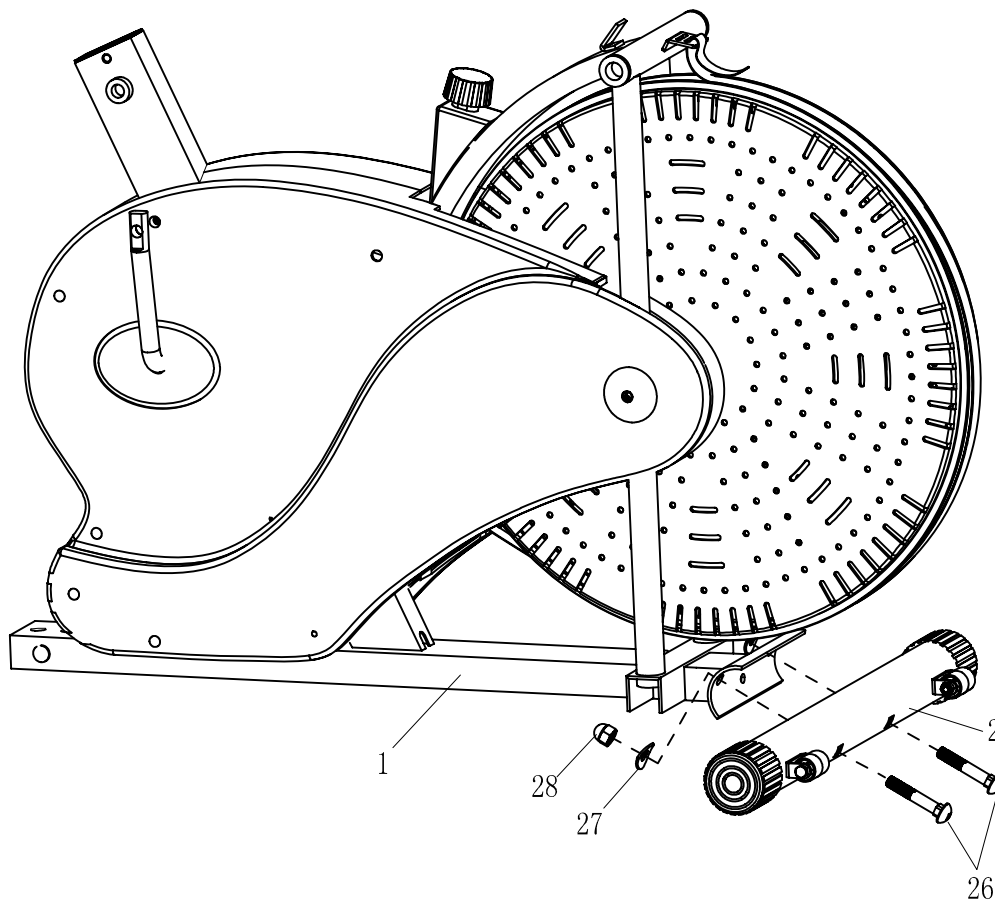
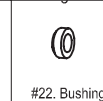
### Washer

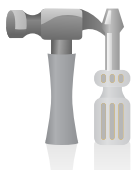


### Knob



### Bushing





# Assembly Instructions

## Assembly Step 2

Secure the **Rear Stabilizer (#3)** to the **Main Frame (#1)** with four **Bolts (#24)**, four **Spring Washers (#25)** and four **Washers (#19)**.

## Hardware Required

### Bolt



#13. Bolt (M10x18 mm)



#18. Bolt (M8x43 mm)



**4**  
#24. Bolt (M8x16 mm)



#26. Carriage Bolt (M10x57 mm)

### Nut



#11. Nylon Nut (M8)



#20. Nylon Nut (M8)



#23L. Left Nylon Nut



#23R. Right Nylon Nut



#28. Cap Nut (M10)

### Washer



#10. Washer (M8)



#14. Spring Washer (M10)



#15. D Shape Washer (M10)



**4**  
#19. Washer (M8)



#21. Big Washer



**4**  
#25. Spring Washer (M8)



#27. Arc Washer (M10)



#29. Special Washer

### Knob

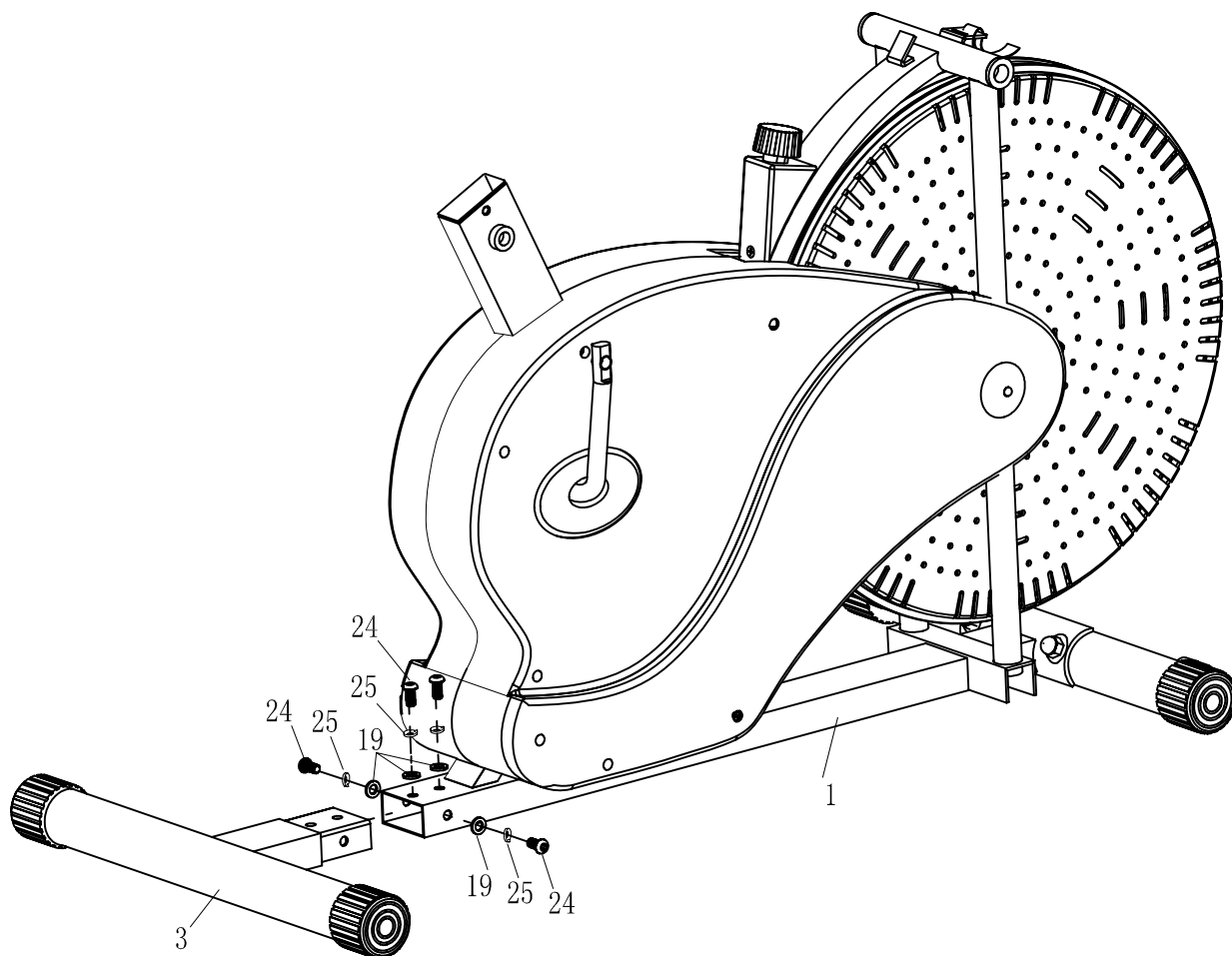


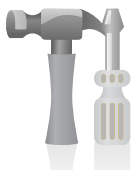
#17. Knob (M12)

### Bushing



#22. Bushing





# Assembly Instructions

## Assembly Step 3

Attach the **Right Pedal (#7R)** to the **Right Linkage (#6R)** with a **Bushing (#22)** and a **Big Washer (#21)** in between. Then screw the **Right Pedal (#7R)** tightly into the right crank and then secure it with the **Right Nylon Nut (#23R)**. Repeat this process on the other side.

### Please Note:

- Left Hand Side: Turn COUNTERCLOCKWISE to tighten the **Left Pedal (#7L)** on the left crank. Then turn CLOCKWISE to tighten the **Left Nylon Nut (#23L)** [BLUE inner nylon ring] to secure the left pedal assembly.
- Right Hand Side: Turn CLOCKWISE to tighten the **Right Pedal (#7R)** on the right crank. Then turn COUNTERCLOCKWISE to tighten the **Right Nylon Nut (#23R)** [WHITE inner nylon ring] to secure the right pedal assembly.

## Hardware Required

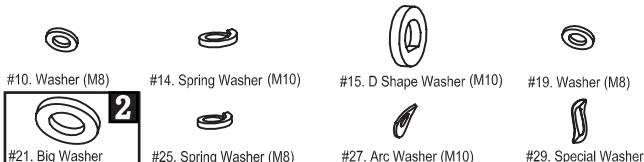
### Bolt



### Nut



### Washer

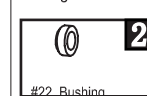


### Knob

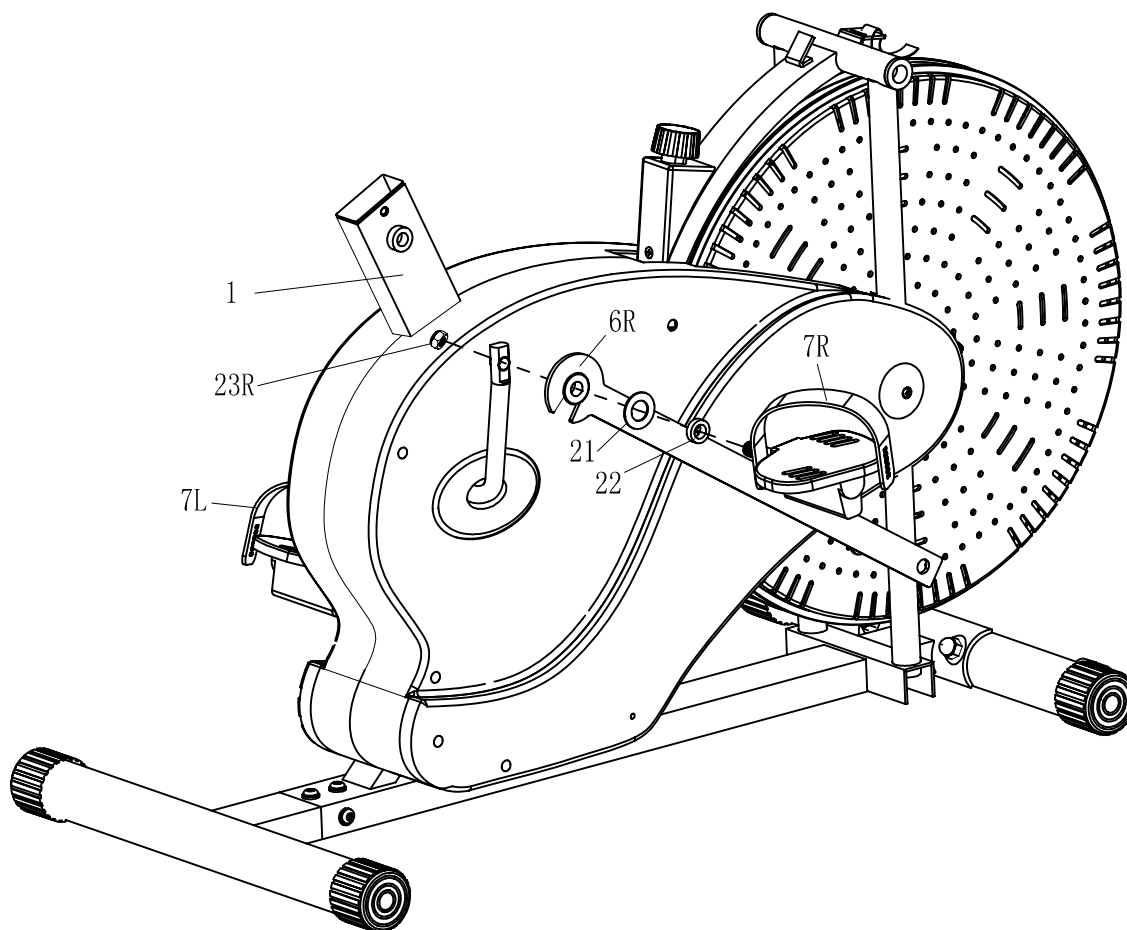


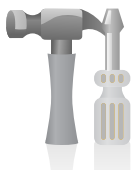
#17. Knob (M12)

### Bushing



#22. Bushing





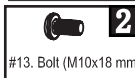
# Assembly Instructions

## Assembly Step 4

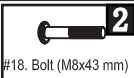
Remove the two **Special Washers (#29)**, two **D Shape washers (#15)**, two **Spring Washers (#14)** and two **Bolts (#13)** that are pre-assembled on the **Handlebar Axle (#16)**. Insert the **Handlebar Axle (#16)** through the **Main Frame (#1)**. Make sure the **Handlebar Axle (#16)** is centered. If you encounter too much friction, try using WD40 or Vaseline as a lubricant. Insert two **Special Washers (#29)** that were just removed on the **Handlebar Axle (#16)** followed by **Right Handlebar (#4R)** and **Left Handlebar (#4L)** on each side and then secure them with two **D Shape washers (#15)**, two **Spring Washers (#14)** and two **Bolts (#13)** that were just removed. Carefully cut off the zip tie on the bushing of the **Right Linkage (#6R)**. Then attach the **Right Handlebar (#4R)** to the **Right Linkage (#6R)** with a **Washer (#19)** in the between, secure with a **Bolt (#18)**, a **Washer (#19)** and a **Nylon Nut (#20)**.

## Hardware Required

### Bolt



#13. Bolt (M10x18 mm)



#18. Bolt (M8x43 mm)



#24. Bolt (M8x16 mm)



#26. Carriage Bolt (M10x57 mm)

### Nut



#11. Nylon Nut (M8)



#20. Nylon Nut (M8)



#23L. Left Nylon Nut



#23R. Right Nylon Nut



#28. Cap Nut (M10)

### Washer



#10. Washer (M8)



#14 Spring Washer (M10)



#15 D Shape Washer (M10)



#19. Washer (M8)



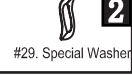
#21. Big Washer



#25. Spring Washer (M8)



#27. Arc Washer (M10)



#29. Special Washer

### Knob

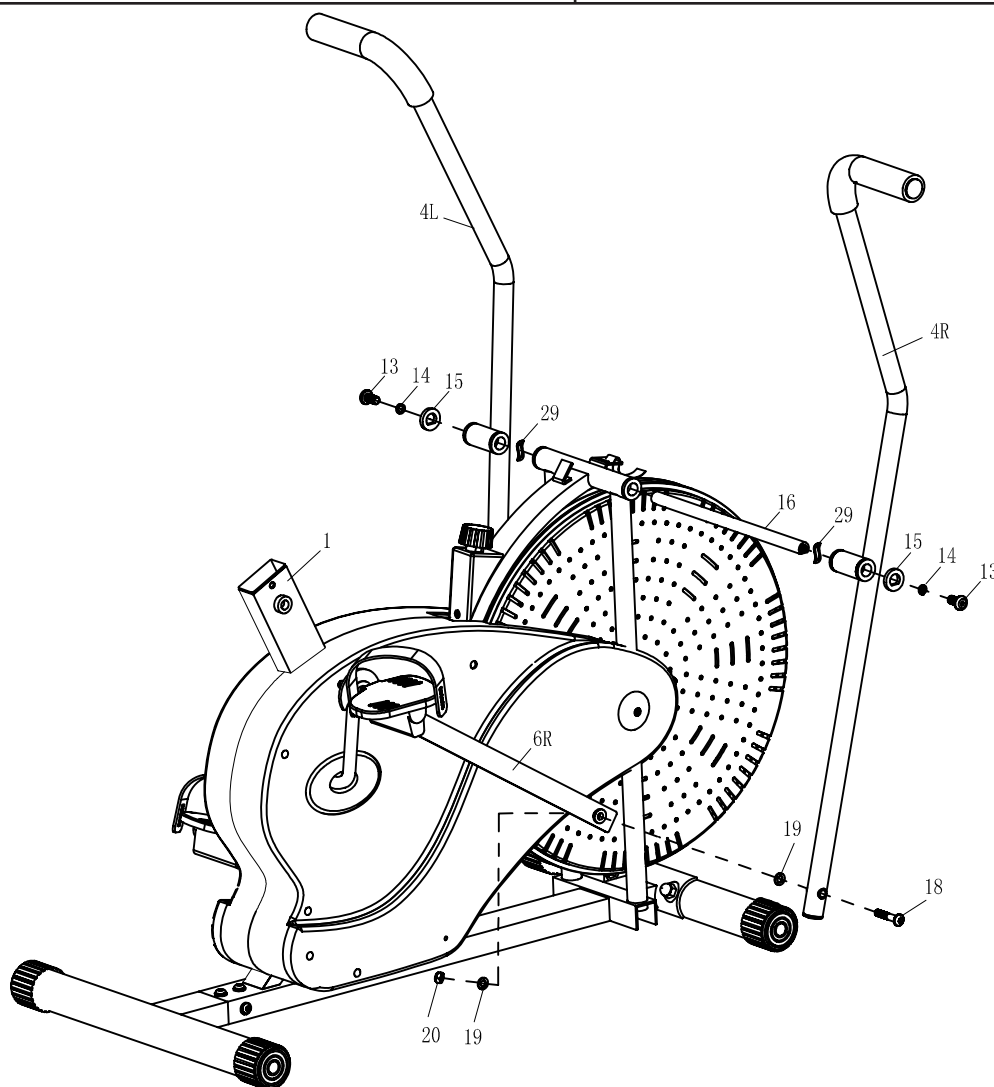


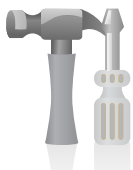
#17. Knob (M12)

### Bushing



#22. Bushing





# Assembly Instructions

## Assembly Step 5

Remove the three **Washers (#10)** and three **Nuts (#11)** that are pre-assembled on the **Seat (#9)**. Then attach the **Seat (#9)** to the **Seat Tube (#5)** and secure it with three **Washers (#10)** and three **Nuts (#11)** that were previously removed.

Attach **Bellows (#12)** to the **Seat Tube (#5)**. Insert the **Seat Tube (#5)** into the slot of the post that is protruding from the **Main Frame (#1)**. Screw the **Knob (#17)** through the **Main Frame (#1)** post and align it into any one of the holes located on the **Seat Tube (#5)**.

## Hardware Required

### Bolt



#13. Bolt (M10x18 mm)



#18. Bolt (M8x43 mm)



#24. Bolt (M8x16 mm)



#26. Carriage Bolt (M10x57 mm)

### Nut



#11. Nylon Nut (M8)



#20. Nylon Nut (M8)



#23L. Left Nylon Nut



#23R. Right Nylon Nut



#28. Cap Nut (M10)

### Washer



#10. Washer (M8)



#14. Spring Washer (M10)



#15. D Shape Washer (M10)



#19. Washer (M8)



#21. Big Washer



#25. Spring Washer (M8)



#27. Arc Washer (M10)



#29. Special Washer

### Knob

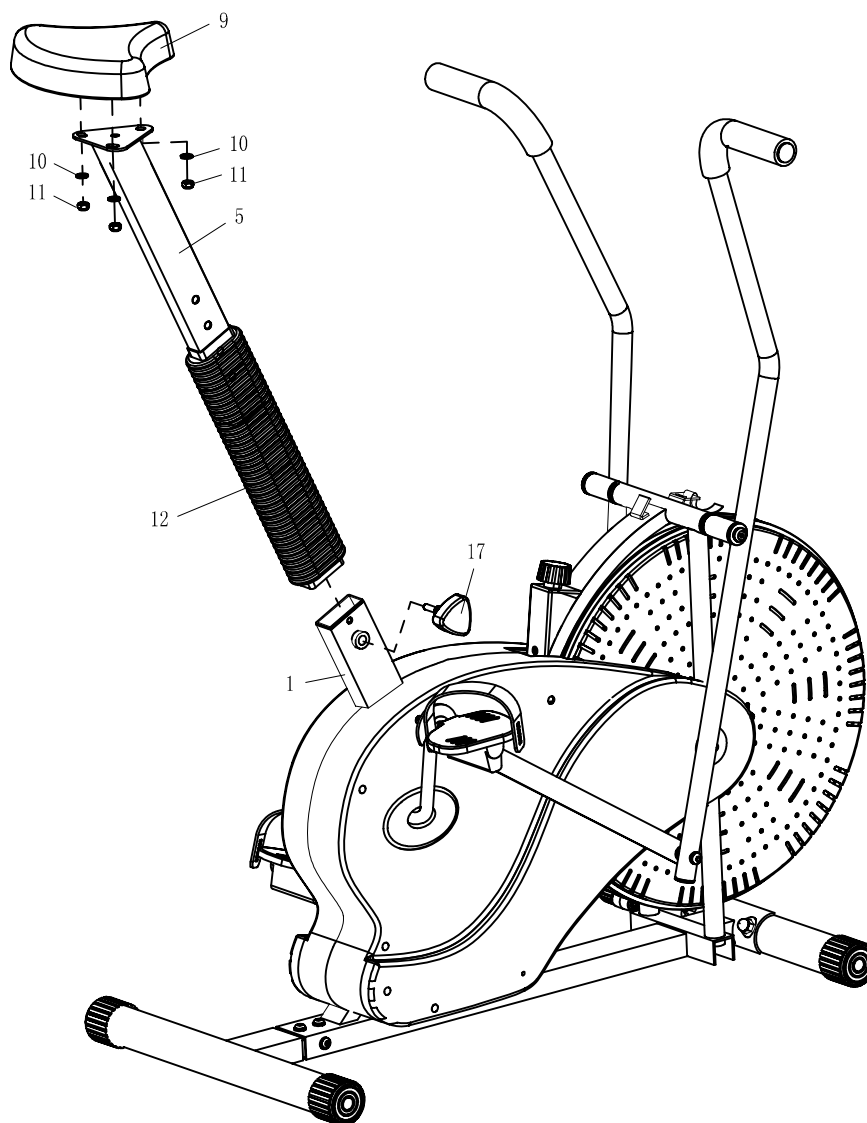


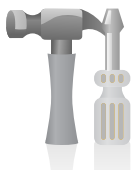
#17. Knob (M12)

### Bushing



#22. Bushing





# Assembly Instructions

## Assembly Step 6

Attach the **Monitor (#8)** to the **Main Frame (#1)** and then connect the **Monitor Wire (#37A)** to the **Monitor Wire (#37B)**.  
The assembly of fan bike is now complete.

## Hardware Required

### Bolt



#13. Bolt (M10x18 mm)



#18. Bolt (M8x43 mm)



#24. Bolt (M8x16 mm)



#26. Carriage Bolt (M10x57 mm)

### Nut



#11. Nylon Nut (M8)



#20. Nylon Nut (M8)



#23L. Left Nylon Nut



#23R. Right Nylon Nut



#28. Cap Nut (M10)

### Washer



#10. Washer (M8)



#14. Spring Washer (M10)



#15. D Shape Washer (M10)



#19. Washer (M8)



#21. Big Washer



#25. Spring Washer (M8)



#27. Arc Washer (M10)



#29. Special Washer

### Knob

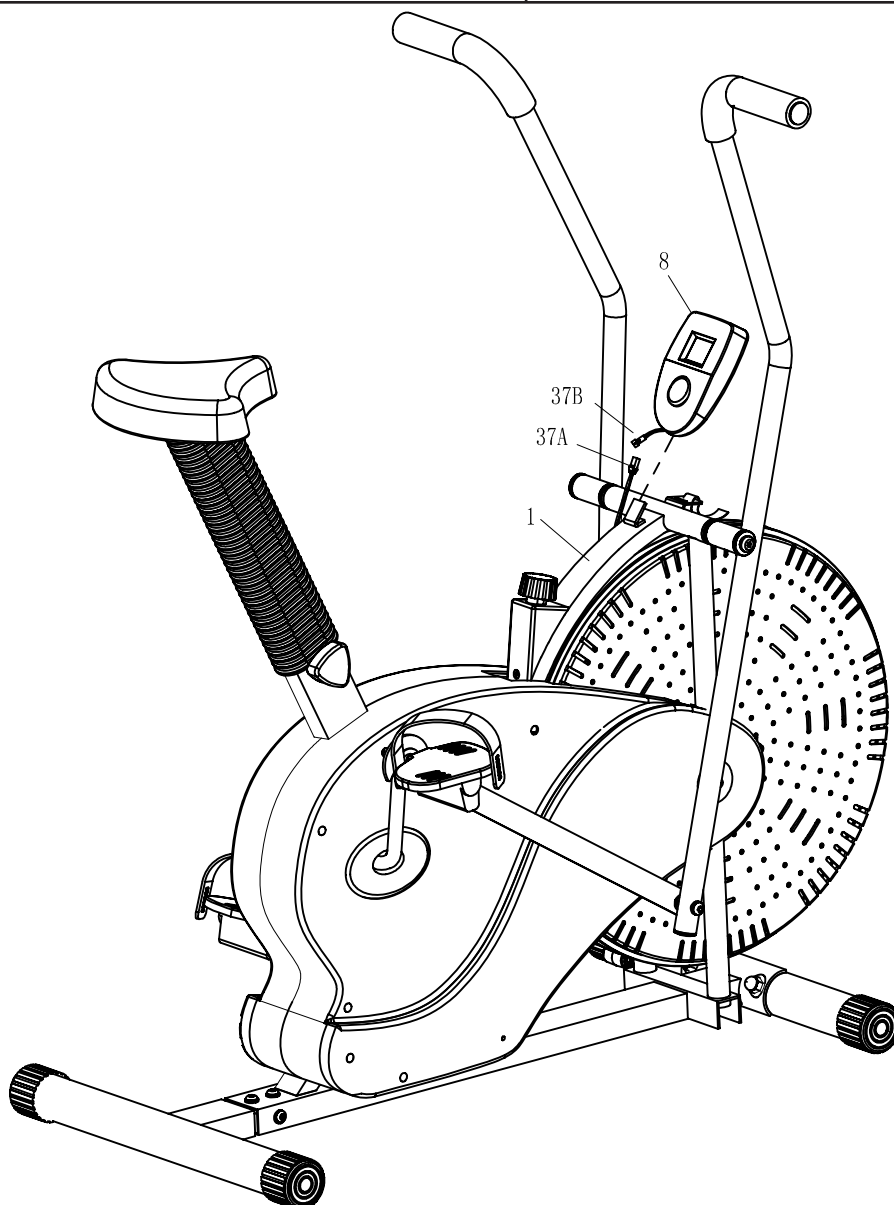


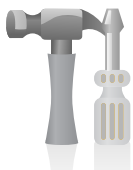
#17. Knob (M12)

### Bushing



#22. Bushing



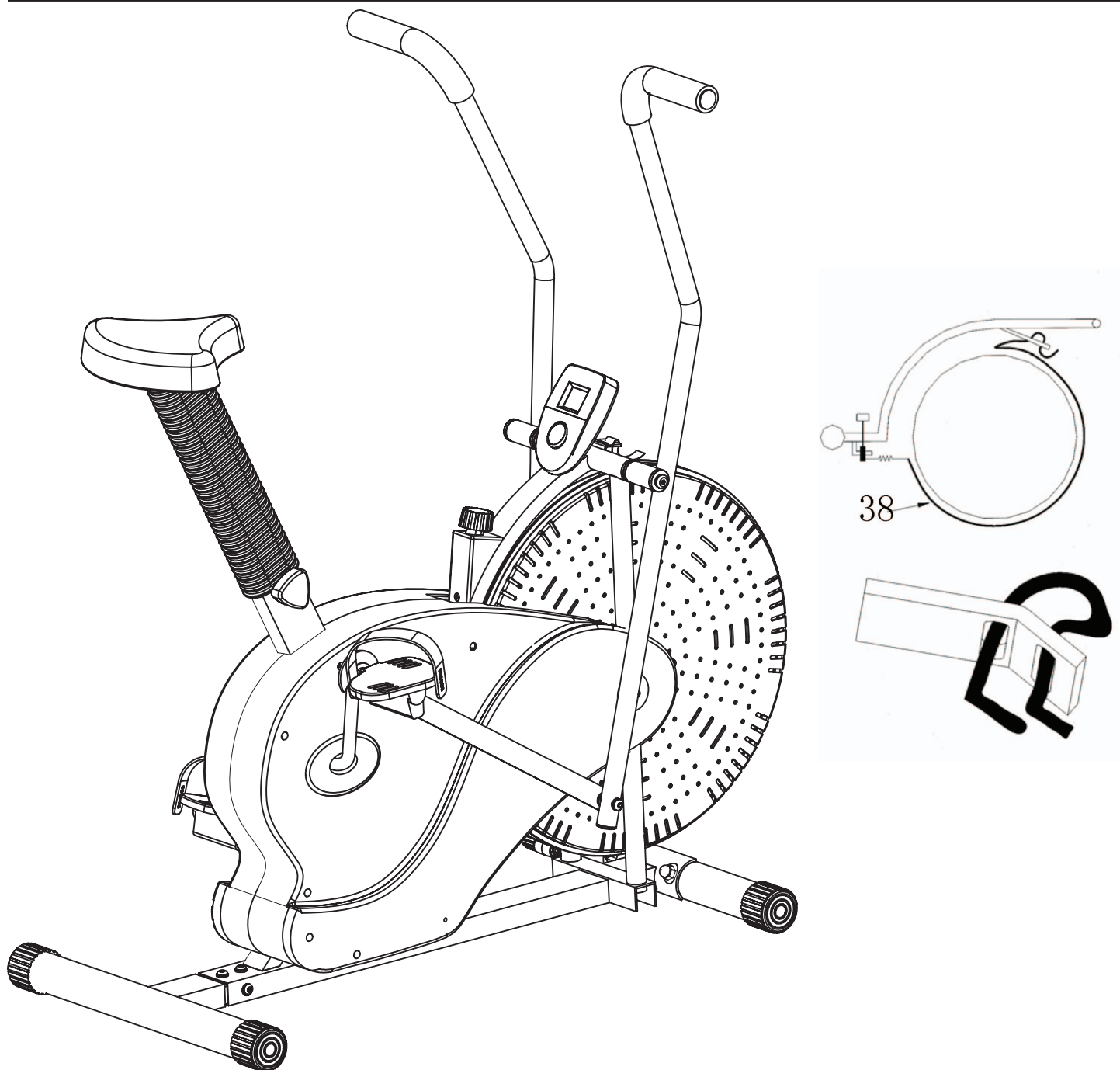


# Assembly Instructions

## Tension Adjustment

**For slight tension adjustment**, simply turn the tension adjustment knob found at the top center. Tension level can be manipulated this way to vary intensity of workout as you exercise.

**For greater tension adjustment**, you may loosen or tighten the **Friction Belt (#38)** by re-strapping it. To do so, first turn the tension adjustment knob all the way to the loosest setting. Then re-strap the belt at the buckle on the main frame, just beneath the flat beam at the top center. The more length you allow for the friction belt to wrap around the wheel, the less friction it will cause. Re-adjust the tension knob after you finished re-strapping.





# Computer Operation

---

## **SPECIFICATIONS:**

TIME.....0:00-99:59  
SPEED.....0.0-99ML/H  
DISTANCE .....0.0-999.9ML  
CALORIES.....0.0-9999CAL

## **KEY FUNCTION:**

MODE: This key lets you to select and lock on to a particular function you want.

## **OPERATION PROCEDURES:**

### **1. AUTO ON/OFF:**

- ◆ The system turns on when any key is depressed or when it receives an input from the speed sensor.
- ◆ The system turns off automatically when the speed sensor has no signal input or no key are pressed for approximately 4 minutes.

### **2. RESET:**

The unit can be reset by changing battery or pressing the MODE key for 3 seconds.

### **3. FUNCTION:**

- ◆ Top portion of LCD Display
  - **Speed:** Display the current speed
- ◆ Lower portion of the LCD Display (Press Mode to alternate through the following functions)
  - **Time:** Display the total amount of time using the machine.
  - **Distance:** Display the distance travelled.
  - **Calories:** Display the amount of calories burned.
  - **Scan:** Automatically alternate between the different functions. (Time, Distance, Calories)

### **4. BATTERY:**

This monitor uses one "AA" battery.

You can replace the battery from the back of the unit.



# Proof of purchase

---

*Thanks for choosing*



Model Number BRF 700

Please fill in the information below and keep this manual along with your sales receipt as proof of purchase.

Serial Number:

---

Date of Purchase:

---

Store Name:

---

Body Flex Sports Inc.  
21717 Ferrero Parkway  
Walnut, CA 91789

Phone: (888) 266-6789  
Fax: (909) 598-6707  
Email: [info@bodyflexsports.com](mailto:info@bodyflexsports.com)

**B**  **ODY** *Rider*