

AdvantagePlus  
products manufactured  
after 5/31/2009



## No Chimney Required

Vents Up To 40 Feet  
Using 3" Schedule 40  
PVC or CPVC Pipe

100,000 BTU and  
130,000 BTU Models  
Are Certified To  
Vent With 2"  
Schedule 40 PVC,  
or CPVC Pipe



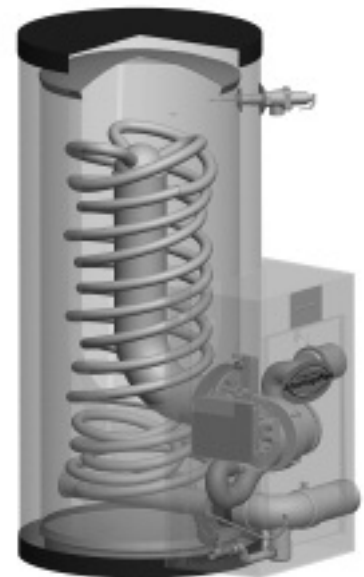
## Available in Sizes Ranging From 55 - 119 Gallon Models

▶ 100,000 BTU/Hr. thru 199,000 BTU/Hr.

**Rheem-Ruud AdvantagePlus™** Gas Commercial Water Heaters are specifically designed to provide customers with maximum savings on operation, space and installation. Designed with the most advanced technology available, these products optimize efficiency and operating reliability.

### Construction Features:

- 316L stainless steel tank construction (requires no anode rods).
- No chimney required; direct vent using plastic pipe.
- Thermal efficiency of 95% dramatically reduces operating costs.
- 85 equivalent feet of vent length.
- Low NO<sub>x</sub> emissions. Meets SCAQMD Rule 1146.2.
- High impact plastic jacket eliminates dents.
- 2" of non-CFC, polyurethane foam insulation.
- Less than 1/2 degree per hour heat loss (R17).
- Corrosion resistant, high efficiency 90/10 cupronickel heat exchanger.
- Self-diagnostic electronic control with digital readout for water temperature, set point and differential.
- Removable front cover allows easy access to equipment (24" service clearance recommended).
- Temperature range from 70°F to 160°F (maximum temperature setting of 180°F available on HE55-160 and HE55-199 booster models only).
- Zero clearance to all combustible surfaces.
- Factory installed AGA/ASME rated T&P relief valve.
- Booster installation kit provided with HE55-160 and HE55-199 booster models.



### Certifications and Ratings:

The water heaters are UL/ULC listed and exceed the minimum efficiency and standby loss requirements of current ASHRAE standards. All water heaters are supplied with an AGA/ASME rated temperature and pressure relief valve. The control panel is an integrated solid state temperature and ignition control device with integral diagnostics, LED fault display capability and a digital display of temperature settings. All models are North Carolina Code compliant. Meet all safety and construction requirements of ANSI Z21.10.3.

**CERTIFIED FOR A 150 PSI MAXIMUM WORKING PRESSURE.**

## RECOVERY CAPACITIES

Recovery in U.S. Gallons/Hr. (GPH) and Liters/Hr. (LPH) at Various Temperature Rises

| MODEL NUMBER                      | INPUT (BTU/HR) NAT. & LP | THERMAL EFFICIENCY | UNITS | 40°F   | 50°F   | 60°F   | 70°F   | 80°F   | 90°F   | 100°F  | 110°F  | 120°F  | 130°F  | 140°F  |
|-----------------------------------|--------------------------|--------------------|-------|--------|--------|--------|--------|--------|--------|--------|--------|--------|--------|--------|
|                                   |                          |                    |       | (22°C) | (28°C) | (33°C) | (39°C) | (45°C) | (50°C) | (56°C) | (61°C) | (67°C) | (72°C) | (78°C) |
| HE55-100                          | 100,000                  | 95%                | GPH   | 288    | 230    | 192    | 165    | 144    | 128    | 115    | 105    | 96     | N/A    | N/A    |
|                                   |                          |                    | LPH   | 1090   | 872    | 726    | 623    | 545    | 484    | 436    | 396    | 363    | N/A    | N/A    |
| HE55-130<br>HE80-130<br>HE119-130 | 130,000                  | 95%                | GPH   | 374    | 299    | 249    | 214    | 187    | 166    | 150    | 136    | 125    | N/A    | N/A    |
|                                   |                          |                    | LPH   | 1417   | 1133   | 944    | 809    | 708    | 630    | 567    | 515    | 472    | N/A    | N/A    |
| HE80-160<br>HE119-160             | 160,000                  | 95%                | GPH   | 461    | 368    | 307    | 263    | 230    | 205    | 184    | 167    | 154    | N/A    | N/A    |
|                                   |                          |                    | LPH   | 1744   | 1395   | 1162   | 996    | 872    | 775    | 697    | 634    | 581    | N/A    | N/A    |
| HE80-199<br>HE119-199             | 199,000                  | 95%                | GPH   | 573    | 458    | 382    | 327    | 286    | 255    | 229    | 208    | 191    | N/A    | N/A    |
|                                   |                          |                    | LPH   | 2169   | 1735   | 1446   | 1239   | 1084   | 964    | 867    | 789    | 723    | N/A    | N/A    |
| <b>BOOSTER MODELS</b>             |                          |                    |       |        |        |        |        |        |        |        |        |        |        |        |
| HE55-160                          | 160,000                  | 95%                | GPH   | 461    | 368    | 307    | 263    | 230    | 205    | 184    | 167    | 154    | 142    | 132    |
|                                   |                          |                    | LPH   | 1744   | 1395   | 1162   | 996    | 872    | 775    | 697    | 634    | 581    | 536    | 498    |
| HE55-199                          | 199,000                  | 95%                | GPH   | 573    | 458    | 382    | 327    | 286    | 255    | 229    | 208    | 191    | 176    | 164    |
|                                   |                          |                    | LPH   | 2169   | 1735   | 1446   | 1239   | 1084   | 964    | 867    | 789    | 723    | 667    | 620    |

Recovery rating is based on thermal efficiencies obtained in an UL certified laboratory.

## MAXIMUM DELIVERY

In U.S. Gallons and Liters (Includes useable storage and recovery for indicated times)

| MODEL NUMBER | GALLONS | LITERS | INPUT (BTU/HR) NAT. & LP | TEMP. RISE | UNITS | 5    | 10   | 15   | 20   | 30   | 45   | 1    | 2    | 3    | MIN. TO RECOVER CONTENTS |
|--------------|---------|--------|--------------------------|------------|-------|------|------|------|------|------|------|------|------|------|--------------------------|
|              |         |        |                          |            |       | MIN. | MIN. | MIN. | MIN. | MIN. | MIN. | HR.  | HR.  | HR.  |                          |
| HE55-100     | 55      | 208    | 100,000                  | 100°F      | GAL.  | 48   | 58   | 67   | 77   | 96   | 125  | 154  | 269  | 384  | 29                       |
|              |         |        |                          | 37.7°C     | LTR.  | 182  | 219  | 255  | 291  | 364  | 473  | 582  | 1019 | 1455 |                          |
| HE55-130     | 55      | 208    | 130,000                  | 100°F      | GAL.  | 51   | 63   | 76   | 88   | 113  | 151  | 188  | 338  | 488  | 22                       |
|              |         |        |                          | 37.7°C     | LTR.  | 193  | 240  | 288  | 335  | 430  | 571  | 713  | 1281 | 1848 |                          |
| HE80-130     | 80      | 303    | 130,000                  | 100°F      | GAL.  | 68   | 81   | 93   | 106  | 131  | 168  | 206  | 355  | 505  | 32                       |
|              |         |        |                          | 37.7°C     | LTR.  | 259  | 306  | 354  | 401  | 495  | 637  | 779  | 1345 | 1912 |                          |
| HE119-130    | 119     | 450    | 130,000                  | 100°F      | GAL.  | 96   | 108  | 121  | 133  | 158  | 196  | 233  | 383  | 532  | 48                       |
|              |         |        |                          | 37.7°C     | LTR.  | 363  | 410  | 457  | 504  | 599  | 750  | 882  | 1449 | 2015 |                          |
| HE55-160     | 55      | 208    | 160,000                  | 100°F      | GAL.  | 54   | 69   | 85   | 100  | 131  | 177  | 223  | 407  | 591  | 18                       |
|              |         |        |                          | 37.7°C     | LTR.  | 204  | 262  | 320  | 379  | 495  | 670  | 844  | 1542 | 2241 |                          |
| HE80-160     | 80      | 303    | 160,000                  | 100°F      | GAL.  | 71   | 87   | 102  | 117  | 148  | 194  | 240  | 424  | 609  | 26                       |
|              |         |        |                          | 37.7°C     | LTR.  | 270  | 328  | 386  | 444  | 561  | 735  | 909  | 1607 | 2304 |                          |
| HE119-160    | 119     | 450    | 160,000                  | 100°F      | GAL.  | 99   | 114  | 129  | 145  | 175  | 221  | 268  | 452  | 636  | 39                       |
|              |         |        |                          | 37.7°C     | LTR.  | 373  | 432  | 490  | 548  | 664  | 838  | 1013 | 1710 | 2408 |                          |
| HE55-199     | 55      | 208    | 199,000                  | 100°F      | GAL.  | 58   | 77   | 96   | 115  | 153  | 210  | 268  | 497  | 726  | 14                       |
|              |         |        |                          | 37.7°C     | LTR.  | 218  | 291  | 363  | 435  | 580  | 797  | 1014 | 1883 | 2751 |                          |
| HE80-199     | 80      | 303    | 199,000                  | 100°F      | GAL.  | 75   | 94   | 113  | 132  | 171  | 228  | 285  | 514  | 743  | 21                       |
|              |         |        |                          | 37.7°C     | LTR.  | 284  | 357  | 429  | 501  | 646  | 863  | 1079 | 1947 | 2814 |                          |
| HE119-199    | 119     | 450    | 199,000                  | 100°F      | GAL.  | 102  | 121  | 141  | 160  | 198  | 255  | 312  | 542  | 771  | 31                       |
|              |         |        |                          | 37.7°C     | LTR.  | 338  | 460  | 532  | 604  | 749  | 966  | 1183 | 2050 | 2918 |                          |

All models have a maximum setpoint of 160°F with the exception of the HE55-160 and HE55-199 booster models. The HE55-160 and HE55-199 have a maximum setpoint of 180°F.

## DIMENSIONAL INFORMATION

All dimensions shown in English and Metric

| MODEL NUMBER                        | UNITS  | A    | B      | C   | D      | E     | F      | G       | H     | VENT | WATER CONNECTIONS |        | APPROX SHIPPING WT. |
|-------------------------------------|--------|------|--------|-----|--------|-------|--------|---------|-------|------|-------------------|--------|---------------------|
|                                     |        |      |        |     |        |       |        |         |       |      | INLET             | OUTLET |                     |
| HE55-100<br>HE55-130                | inches | 52   | 23 1/2 | 32  | 45     | 5     | 25 1/4 | 27 9/16 | 5 7/8 | 2    | 1                 | 1      | 175 lbs.            |
|                                     | mm     | 1321 | 597    | 813 | 1143   | 127   | 641    | 700     | 149   | 51   | 25                | 25     | 79 kgs              |
| HE55-160<br>HE55-199                | inches | 52   | 23 1/2 | 32  | 45     | 5     | 25 1/4 | 27 9/16 | 5 7/8 | 3    | 1                 | 1      | 175 lbs.            |
|                                     | mm     | 1321 | 597    | 813 | 1143   | 127   | 641    | 700     | 149   | 76   | 25                | 25     | 79 kgs              |
| HE80-130<br>HE80-160<br>HE80-199    | inches | 72   | 23 1/2 | 32  | 65     | 5     | 25 1/4 | 20 1/4  | 7 3/4 | 3*   | 1-1/2             | 1-1/2  | 235 lbs.            |
|                                     | mm     | 1854 | 597    | 813 | 1651   | 127   | 641    | 514     | 197   | 76   | 38                | 38     | 106 kgs             |
| HE119-130<br>HE119-160<br>HE119-199 | inches | 73   | 27     | 36  | 66 3/4 | 6 3/4 | 28 7/8 | 22      | 9 1/2 | 3*   | 1-1/2             | 1-1/2  | 405 lbs.            |
|                                     | mm     | 1854 | 686    | 914 | 1695   | 171   | 733    | 559     | 241   | 76   | 38                | 38     | 184 kgs             |

**0" CLEARANCE TO COMBUSTIBLES ON ALL ADVANTAGE PLUS UNITS, HOWEVER, A 24" CONTROL PANEL SERVICE CLEARANCE IS RECOMMENDED.**

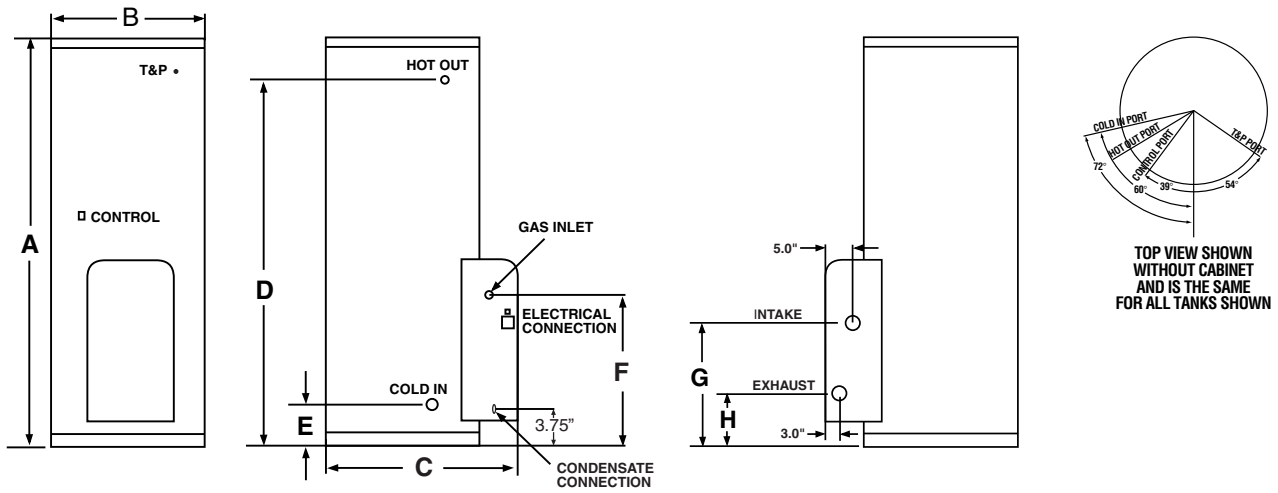
**MODELS WITH INPUTS OF 100,000 BTU AND 130,000 BTU ARE CERTIFIED TO VENT WITH 2" SCHEDULE 40 PVC OR CPVC PIPE**

\* 130,000 BTU models are certified to be installed with 2" venting.

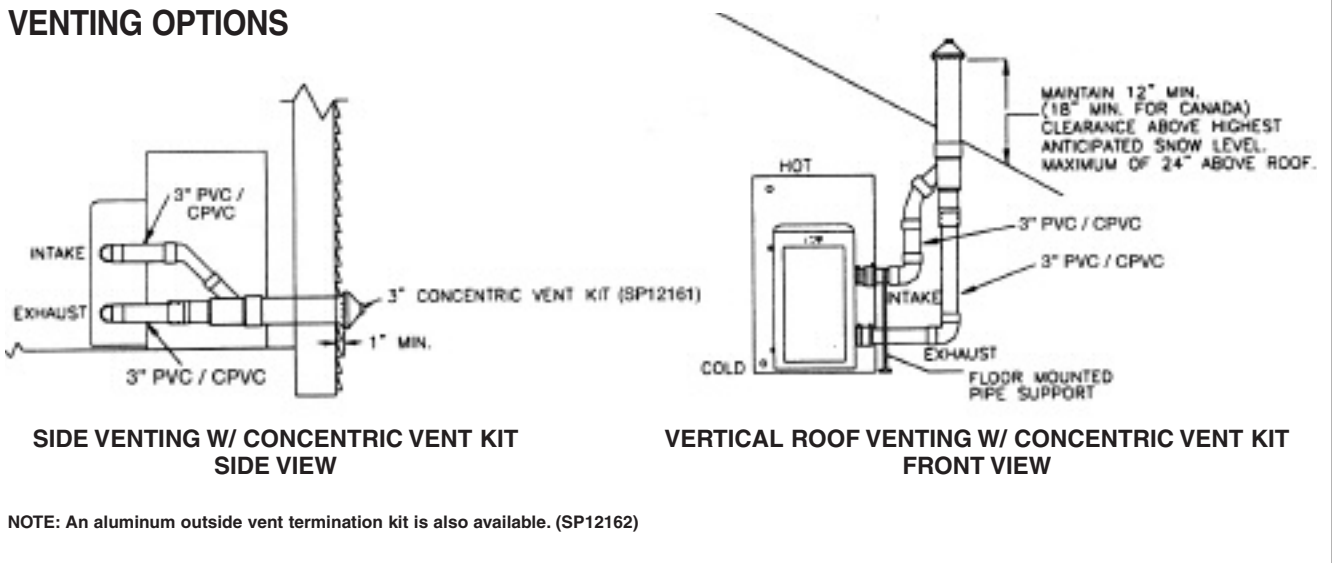
All models require a 120V power source.

See use and care manual for venting details.

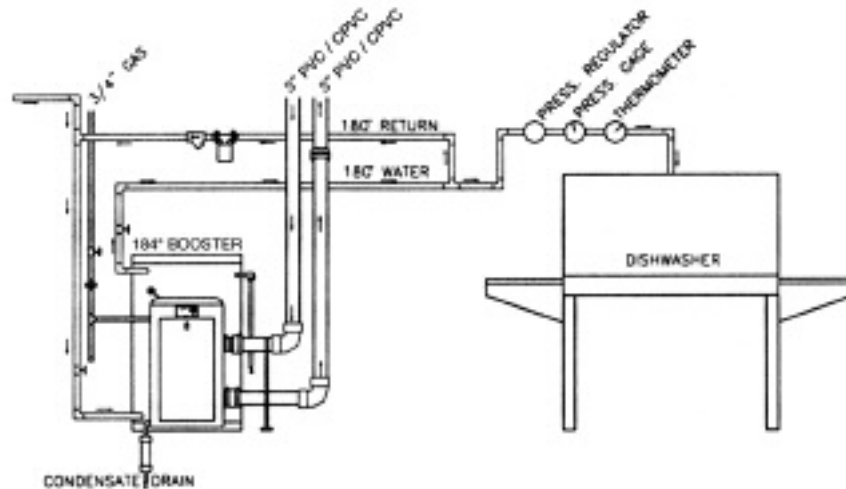
### DIMENSIONAL INFORMATION



### VENTING OPTIONS



### BOOSTER FOR HIGH TEMPERATURE SANITATION RINSE



The HE55-160 and HE55-199 Booster models are the only models equipped with a 180°F thermostat. Models with 180°F thermostats come standard with the Booster Installation Kit which includes all necessary components for an approved installation.

### Booster Installation Kit includes:

---

- Nibco Tee – 1" x 1" x 1/2" (2 pieces)
- Female Adapter – 1" (2 pieces)
- Dial Thermometer (2 pieces)
- Expansion Tank – 4-1/2 gallon
- Grundfos 3 Speed Pump with Check Valve
- Nibco 1.2" x 12" Fitting Air Chamber
- Vacuum Relief Valve
- Pressure Gauge – 0-200 PSI
- Nibco Tee 712R – 1" x 1" x 3/4" (2 pieces)
- Nibco Tee 714RR – 1" x 1/2" x 1"
- Nibco Tee – 1" x 1/2" x 1" Copper
- Reducing Coupling
- Pressure Reducing Valve
- Nibco Male Adapter – 1"

### Recommended Specifications (for trade reference only)

---

The Water Heaters shall be Rheem-Ruud model number HE- \_\_\_\_\_. The Water Heaters shall be a sealed combustion system, taking only outside air for combustion and exhausting the flue gas with plastic pipe. The intake air shall be piped with plastic PVC or CPVC pipe, 3" in diameter (2" in diameter for 100,000 BTU and 130,000 BTU) and the exhaust gas shall be piped with PVC or CPVC pipe. All related intake air and exhaust gas shall be approved for zero clearance to any combustible surface.

The heaters shall be constructed of 316L stainless steel. The primary condensing heat exchanger shall be constructed of 90/10 cupronickel. The insulation is a water blown foam and shall be 2" thick with rating of R14.2 and 3" on the top of the heater rated at R21.3. Insulation shall be enclosed in a plastic shell. All components shall be located in the front of the heater for easy access for serviceability. All related hardware shall be constructed of stainless steel studs and brass nuts for serviceability.

### Limited Warranty

---

This product features a three year limited warranty against tank leaks. Please refer to Commercial Warranty Information brochure for complete warranty information.



*In keeping with its policy of continuous progress and product improvement, Rheem-Ruud reserves the right to make changes without notice.*

Rheem Water Heating • 101 Bell Road, Montgomery, Alabama 36117-4305 • [www.rheem.com](http://www.rheem.com)  
Rheem Canada Ltd./Ltée, 128 Barton Street West, Hamilton, Ontario L8N 3P3