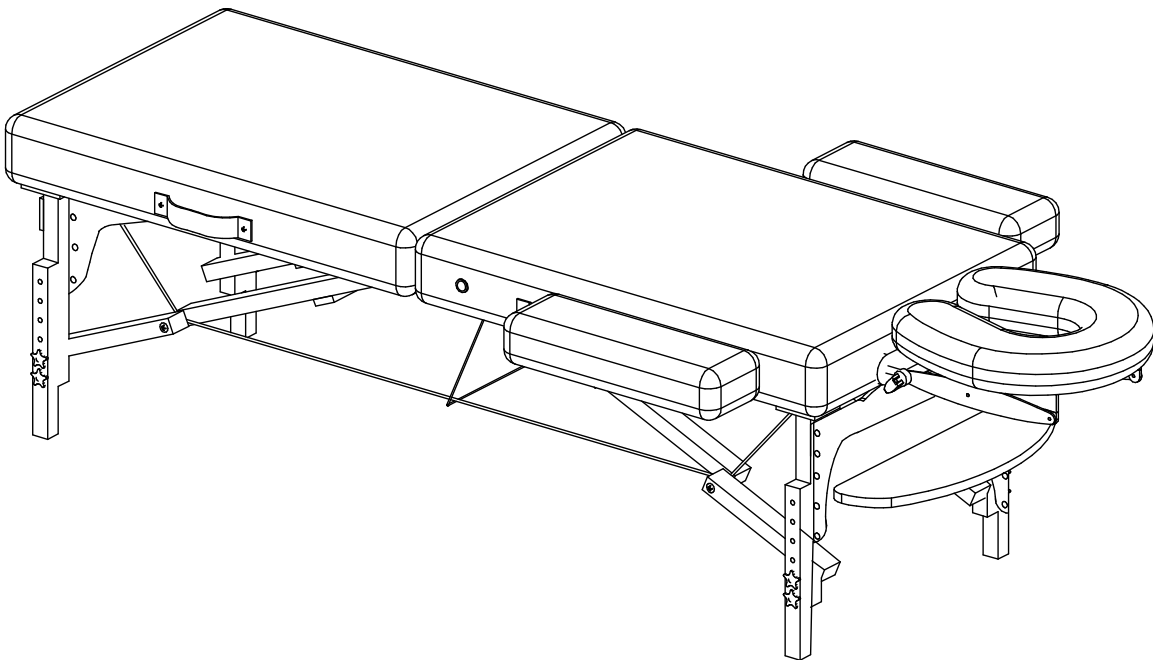


# OWNER'S MANUAL

# IRONMAN

## MASSAGE TABLE



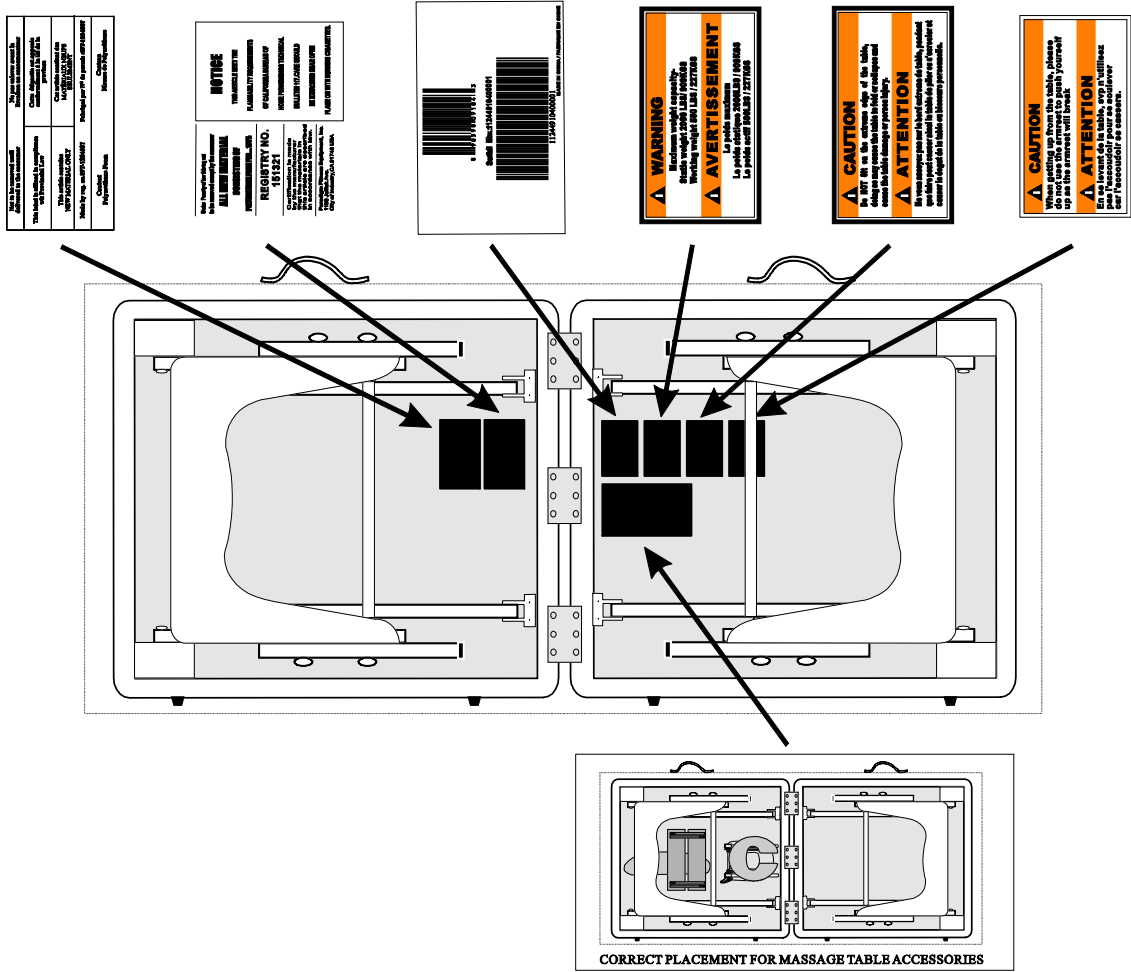
Model # 9104

The specifications of this product may vary from this photo and are subject to change without notice.  
IRONMAN, IRONMAN TRIATHLON AND M-DOT are registered trademarks of World Triathlon Corporation.  
This product is licensed by the IRONMAN TRIATHLON.

# TABLE OF CONTENTS

	<i>Page #</i>
Warning label placement	3
<hr/>	
Service	4
<hr/>	
Safety precautions	5
<hr/>	
Overview drawing	6
<hr/>	
Part list	7
<hr/>	
Assembly	8
<hr/>	
Adjustment	11
<hr/>	
Storage	12
<hr/>	
Maintenance instructions	12
<hr/>	
Warranty	13
<hr/>	
Part request fax foam	14

# WARNING LABEL PLACEMENT



## SERVICE

To request product service and order replacement parts, please call our customer service department at

**1-866-924-1688**

Monday through Friday, 8:00 am-5:00 pm Pacific Standard Time,  
or email at: **service@paradigmhw.com**

Please have the following information ready when requesting for service:

Your name	Phone number	Owner's manual
Model number	Serial number	Part number
Date of Purchase		

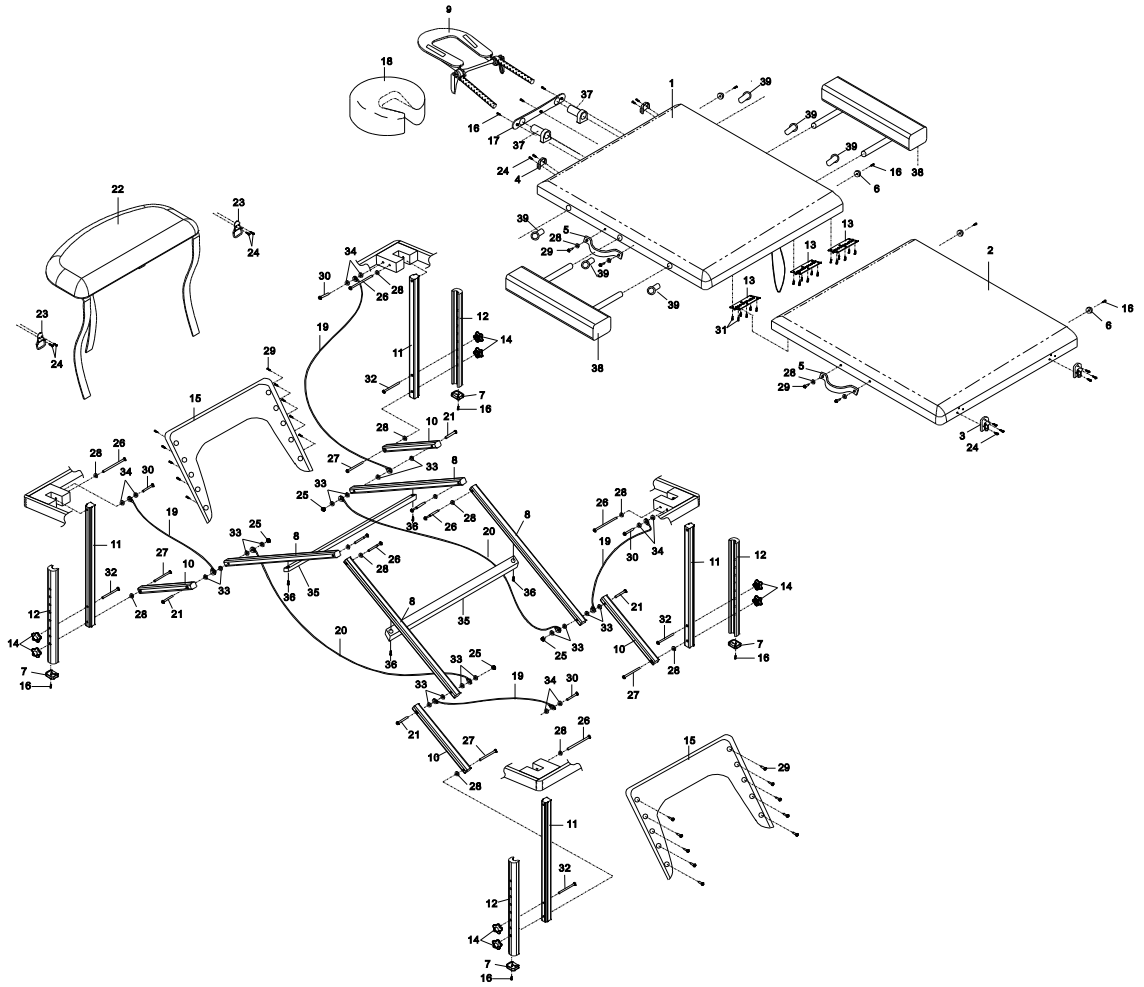
**\*If the product has major defects which prevent it from functioning properly, please return it to the store of purchase within the period allowed by the store.**

Paradigm Health & Wellness, Inc.  
1189 Jellick Ave.  
City of Industry, CA 91748

## SAFETY PRECAUTIONS

1. Examine the Massage Table for damage before each use.
2. Use the Massage Table on a level surface.
3. Do not use alcohol based cleaners when cleaning the vinyl. This could cause damage to the vinyl material. Use warm soapy water and wipe dry.
4. Make sure when using the table that all four legs should be adjusted to the same level. Using the legs at different levels can cause the Massage Table to be unstable and cause injury.
5. Do not allow children to play on the Massage Table.
6. Do not overload the table beyond the recommended weight limit. This could result in serious injury to the user.
7. Maximum weight capacity- static weight: 2000 lbs/909 kgs  
working weight: 500 lbs/227 kgs

# OVERVIEW DRAWING



## PART LIST

Part#	Description	Quan.	Part#	Description	Quan.
001	Front Bed with Frame	1	021	M6x65mm Self Tapping Bolt	4
002	Rear Bed with Frame	1	022	Armrest	1
003	Upper Buckle	2	023	Armrest Loop	2
004	Lower Buckle	2	024	M3x20mm Round Head Self Tapping Screw	14
005	Handle	2	025	M6 Nylon Nut	4
006	Rubber Foot	4	026	M6x75mm Bolt	8
007	Lower Leg End Cap	4	027	M6x75mm Self Tapping Bolt	4
008	Long Brace	4	028	Plastic Washer Ø18xØ6x2t	16
009	U Shaped Headrest	1	029	M4x18mm Mod. Truss Head Screw	24
010	Short Brace	4	030	M6x30mm Bolt	4
011	Upper Leg	4	031	M4x20mm Self Tapping Screw	18
012	Lower Leg	4	032	M6x50mm Self Tapping Bolt	4
013	Hinge	3	033	Plastic Washer Ø13xØ6x2t	16
014	Leg Knob	8	034	Plastic Washer Ø15xØ6x4t	8
015	End Panel	2	035	Cross Brace	2
016	M4x20mm Round Head Self Tapping Screw	11	036	M4x20mm Self Tapping Bolt	4
017	Headrest Bushing Plate	1	037	U Shaped Headrest Bushing	2
018	Face Cushion	1	038	Side Armrest	2
019	Short Cable	4	039	Side Armrest Bushing	6
020	Long Cable	2			

# ASSEMBLY

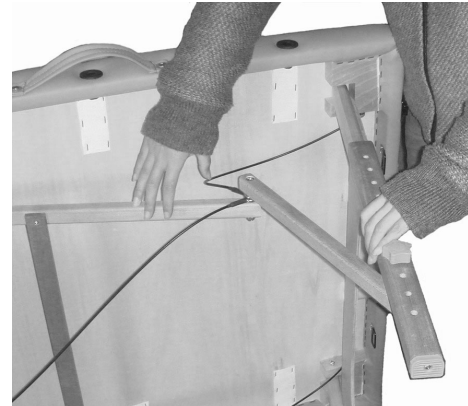
1

Release the Buckles and then open the table so that it is standing on the side with the Rubber Feet. Take out the Face Cushion, U Shaped Headrest, Armrest, and Side Armrests from underneath of the table.



2

Pull out the left and right pair of Legs and straighten each joint.



3

Lift the table up until all four legs are on the floor.

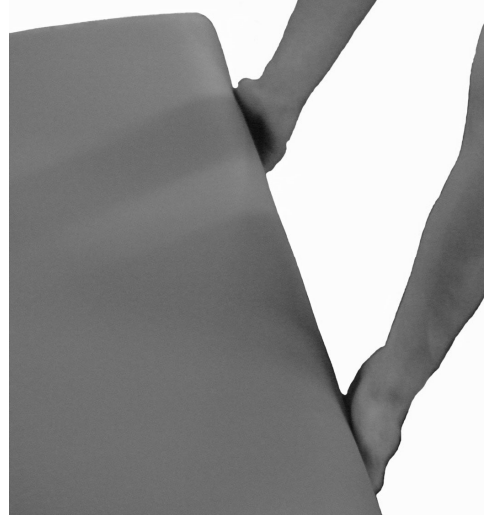




# ASSEMBLY

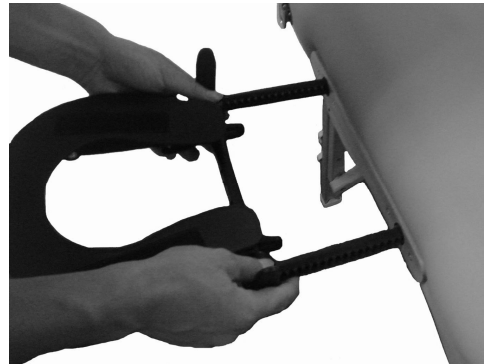
4

Lift one end of the table and pull out to open table fully.



5

Insert both Right/Left Headrest Sticks with Headrest into the holes of the Headrest Bushing Plate.



6

Attach armrest corner straps onto Armrest Loops underneath the Front Bed.



# ASSEMBLY

7

Attach front strap to the U Shaped Headrest.



8

Place the Face Cushion onto the U Shaped Headrest by lining up the Velcro pads.

***WARNING: HEADREST IS FOR LIGHT USE ONLY! PLEASE DO NOT PLACE HEAVY WEIGHT OR STRONG PRESSURE WHEN RESTING.***



9

Insert both Side Armrests into the Side Armrests Bushings of the Front Bed.



# ADJUSTMENT

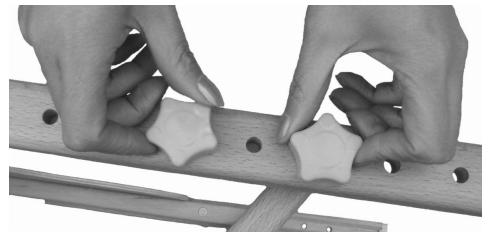
## Adjusting the angle of the Headrest

Press up on the Locking Handles and then adjust the Headrest to the desired angle. Press down on the Locking Handles after adjustment to lock into place.

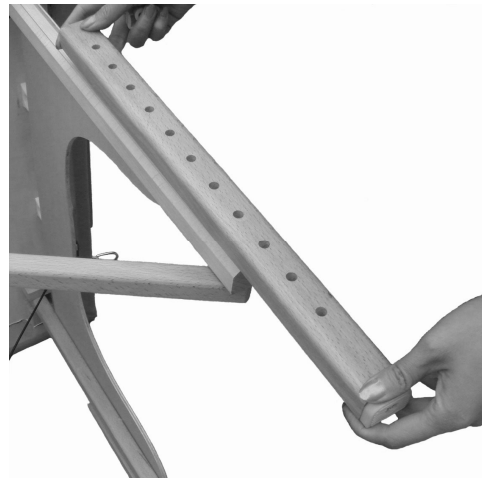


## Adjusting the Table Height

Lay the table on the Rubber Footed side and then remove the Leg Knobs.



Remove the Lower Leg and then place the Lower Leg back onto the Upper Leg matched up to the desired holes for adjusting the height of the table.

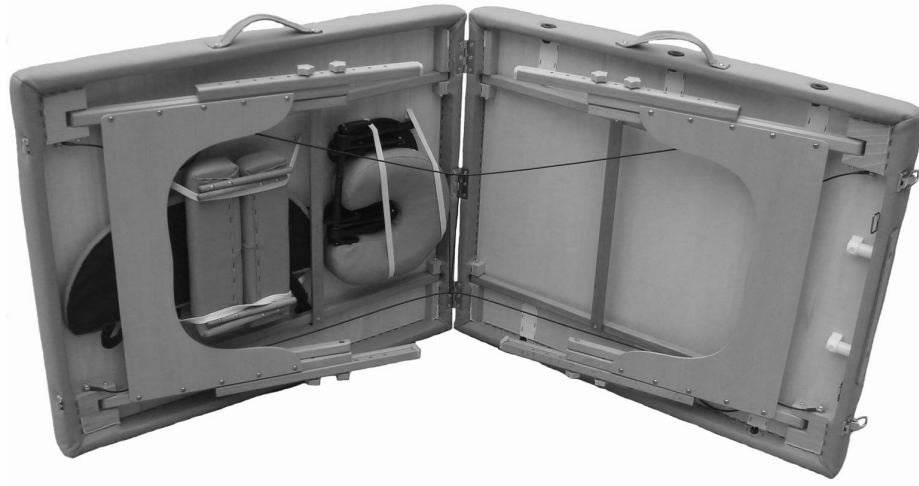


Tighten the Leg Knobs after adjustment.

***NOTE: Adjust all of the four Legs to the same height.***



## STORAGE



1. Lay the table on its side and fold at an angle.
2. Completely fold the Legs flat under the table.
3. Make sure the Cables, U Shape Headrest, Face Cushion, Armrest, and Side Armrests are inside the table before closing it.

## MAINTENANCE INSTRUCTIONS

You should check your massage table for any kind of wear and tear before each and every use.

1. Check the legs, bed and cables for wear and tear.
2. Replace damaged and worn components immediately.
3. Keep all damaged equipment out of use until it is repaired.

## WARRANTY

Paradigm Inc. warrants to the original purchaser that this product is free from defects in material and workmanship when used for the purpose intended, under the conditions that it has been installed and operated in according to Paradigm's Owner's Manual. Paradigm's obligation under this warranty is limited to replacing free of charge, any parts which may prove to be defective under normal home use. This warranty does not include any damage caused by improper operation, misuse or commercial application. From the date of purchase, the frame is warranted to be free from defects for 1 (one) year. All parts and workmanship, including electronics and its console cases, upholstery, foam, ball bearings, pulleys, cables, shocks, all tension mechanisms, wheels, pedals and hardware are to be free from defects for 90 days. This warranty is offered only to the original owner and is not transferable. Proof of purchase is required.

