

C48 Series

34.63" x 47.19" x 23.63" (H x W x D)

48 inch wide combo kitchens with two burners, refrigerator-freezer, sink, and two large cabinets

Highlights:

Two easy-to-clean cast iron burners with 110V operation

Includes SUMMIT CT67 refrigerator-freezer with deluxe interior

Add a Space Saving Appliance Station that houses microwaves, coffee makers, and other small appliances

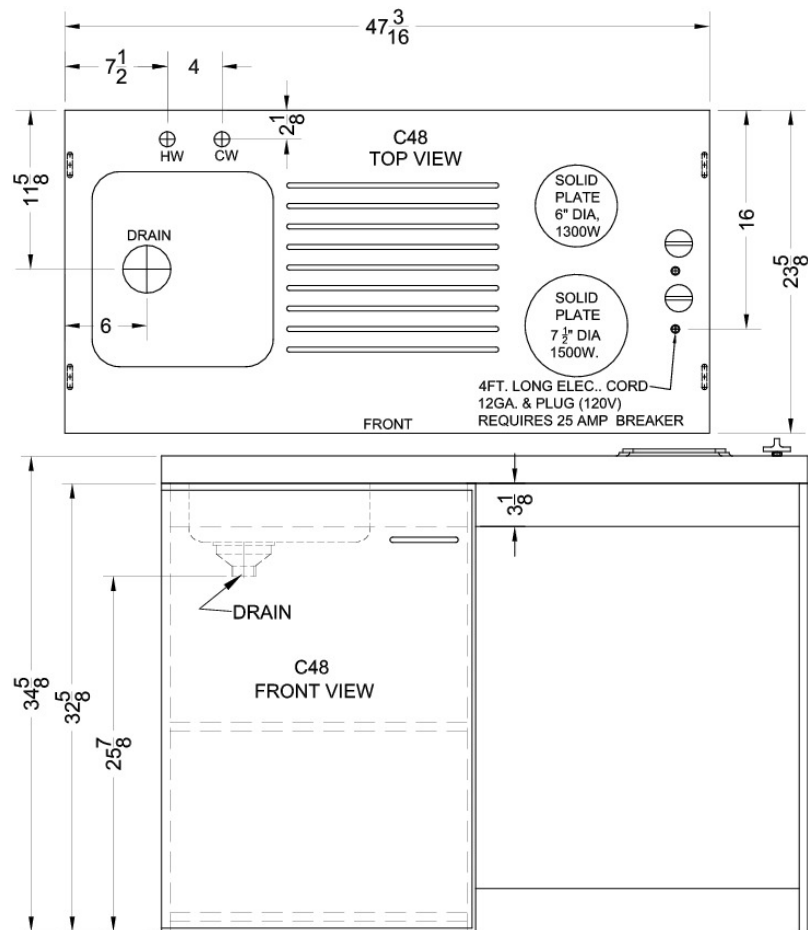
Perfect in small quarters or as a temporary kitchen



Two electric burners	Solid cast iron construction lets you boil and fry with no mess on no-spill surfaces
One piece stainless steel countertop	Easy to clean and built to last
Sink and faucet	Stainless steel sink comes ready to wash
110V Operation	Just plug in and cook
Storage compartment	Large convenient cabinet with center shelf lets you store dry goods behind a door
Refrigerator-freezer included	Includes SUMMIT CT67, a refrigerator-freezer with dual evaporator cooling, adjustable glass shelves, a crisper, and more
Alternate refrigerators and freezers available	Replace the CT67 with any similarly sized SUMMIT refrigerator (such as the FF7), refrigerator-freezer (including the CT66) or all-freezer (including the FS62 or the frost-free SCFF55)
Base unit ships fully assembled	Base model comes in one box. Just slide the refrigerator-freezer into its opening and plug in; some assembly required for Appliance Station
Space Saving Appliance Station Option	Add a solid heavy-duty metal shelf system to hold a microwave, toaster, or any other small appliance; add APSW for white or APSS for stainless steel
Allocator box	APS models include electrical plug allocator to plug in the refrigerator plus two additional appliances while safely limiting overall power consumption to 10 amps

Specifications:

Height	34.63"
Width	47.19"
Depth	23.63"
Capacity	5.1 cu.ft.
Interior Height 1	19.5"
Interior Width 1	20.5"
Interior Depth 1	17.0"
Interior Height 2	5.0"
Interior Width 2	19.0"
Interior Depth 2	11.5"
Comp Step Height	7.0"
Comp Step Width	20.5"
Comp Step Depth	5.0"
Weight	320.0 lbs.
US Electrical Safety	UL
Amps	20.0
Voltage/Frequency	115 V AC/60 Hz
Door Swing	Reversible
Crisper Quantity	1
Shelf Quantity	3
Adjustable Shelf	true
Shelf Type	Wire
Crisper Cover Type	Glass
Crisper Finish	Transparent
Full Door Shelf Quantity	3
Defrost Type	Cycle
Heating Type	Radiant
Burner Temperature Control	Dial
Number of Burners	2
Light	true
Thermostat Type	Dial
Condensor Location	Rear of Unit
Freon Type	R134a
Low Side PSI	70.0
Freon Oz	2.6
Level Legs Quantity	2
High Side PSI	285.0
Parts/Labor Warranty	1 Year



Summit Appliance Division, Felix Storch, Inc.
 770 Garrison Ave • Bronx, NY 10474
 Phone: 718-893-3900 • Fax: 718-842-3093
 Email: info@summitappliance.com