

SP5DS2DSSH

34.38" x 23.88" x 23.75" (H x W x D)

Two drawer all-refrigerator for built-in use with stainless steel drawer fronts, auto defrost with digital thermostat and alarm

Highlights:

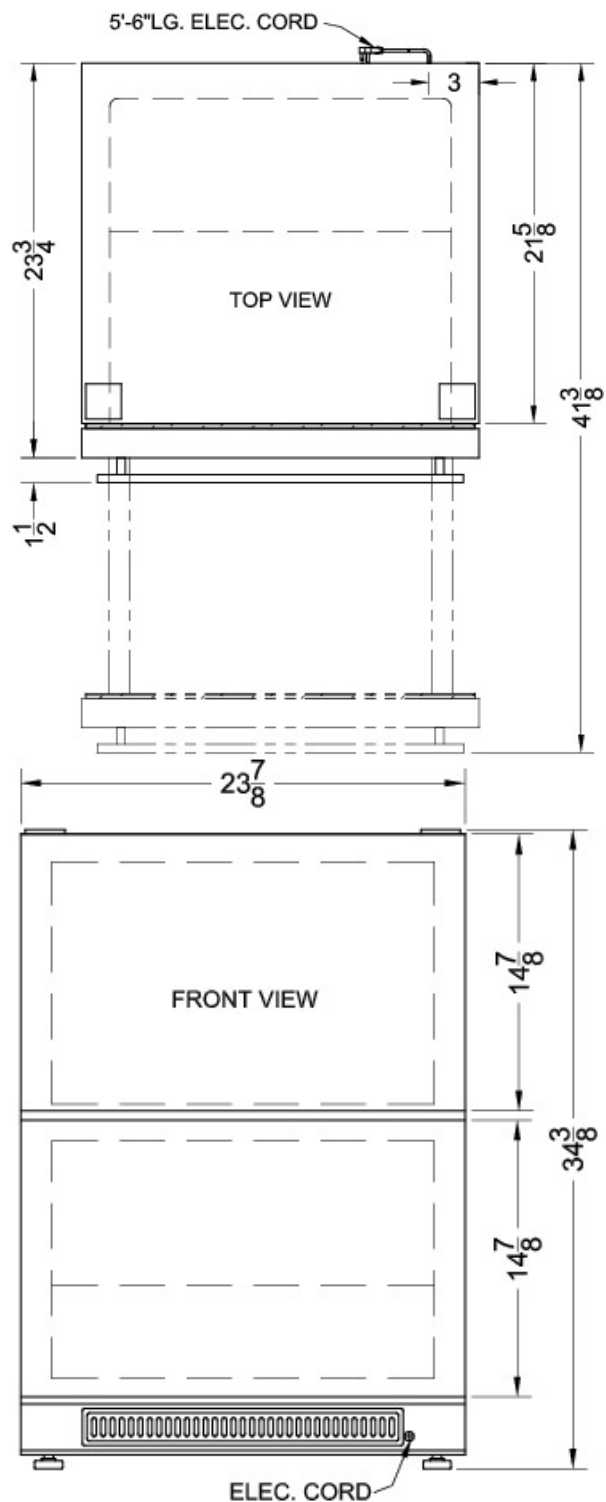
- Designed for built-in use under counters in 24" spaces
- Digital thermostat offers precise and convenient temperature control
- LED lighting illuminates when the drawer is opened
- Alarm sounds when drawers are left ajar for three minutes



Built-in capable	Make the best use of space by installing your appliance under the counter
Digital thermostat	Electronic controls for precise temperature management with a readout in Celsius or Fahrenheit; temperature range: 34-45 °F
Automatic defrost	Reduced maintenance with auto defrost system
Stainless steel drawers	Elegant finish over the drawer fronts
Fully finished black cabinet	Allows the unit to be used freestanding
Professional handles	Sleek stainless steel handles offer a professional look
LED lighting	Elegant light automatically turns on when the drawer is opened
Alarm	Audio signal sounds when the drawer is left open for three minutes
Sabbath mode	Unit can be programmed so that all luminous equipment does not turn on during the Sabbath
Crisper basket	Removable basket with sliding lid included for storing greens

Specifications:

Height	34.38"
Width	23.88"
Depth	23.75"
Capacity	5.4 cu.ft.
Ext Depth with Handle	25.0"
Weight	126.0 lbs.
Voltage/Frequency	115 V AC/60 Hz
Canadian Electrical Safety	ULC
Amps	1.0
US Electrical Safety	UL
Energy Usage/Year	423.0 kWh/year
Crisper Quantity	1
Crisper Cover Type	Glass
Crisper Finish	Transparent
Drawers	true
Drawer Quantity	2
Defrost Type	Automatic
Depth with door at 90°	41.38"
Light	true
Thermostat Type	Digital
Freon Type	R134a
High Side PSI	189.0
Freon Oz	4.94
Low Side PSI	103.0
Parts/Labor Warranty	1 Year
Compressor Warranty	5 Years



Summit Appliance Division, Felix Storch, Inc.
 770 Garrison Ave • Bronx, NY 10474
 Phone: 718-893-3900 • Fax: 718-842-3093
 Email: info@summitappliance.com