

**THE
SHARPER
IMAGE®**

IPAD PORTFOLIO WITH BLUETOOTH® KEYBOARD

RTA - SITCK02
INSTRUCTIONS



Read and save these instructions

Dear Sharper Image Customer,

We hope you are thrilled with your purchase of this Sharper Image product from RTA Products, LLC under license. Please accept our assurance of your complete satisfaction with its quality and performance.

For over thirty years, The Sharper Image® has shared with its customers a genuine enthusiasm for innovative merchandise, sleek design and imaginative use of new technologies in well-priced products that make everyday life better and more enjoyable. Those are the ideas behind the exclusive line of Sharper Image Accessories.

RTA Products and The Sharper Image® will do all we can to reward your confidence in us. RTA Products, LLC is a great organization, with superior customer service, generous return privileges and excellent warranties. We appreciate having the opportunity to exceed your expectations in quality, value and service.

Thank you. Enjoy your purchase!

TABLE OF CONTENTS

Product Warranty Details	1
Contact Information	3
Battery Precautions	4
Package Includes	4
Product Details	5
Installation	6
Charging Your Keyboard	7
How to Sync the Bluetooth	7
Important Information	8

RTA PRODUCTS, LLC 1 YEAR WARRANTY

RTA Products, LLC Warrants this product against defects in materials and/or workmanship under normal use for a period of ONE (1) YEAR from the date of purchase by the original purchaser (“Warranty Period”). If a defect arises and a valid claim is received within the Warranty Period, at its option, RTA Products, LLC will either 1) repair the defect at no charge, using new or refurbished replacement parts, or 2) replace the product with a new product that is at least functionally equivalent to the original product.

Obtaining Service: To obtain warranty service, call RTA Products, LLC Limited Warranty Service at 1-866-782-8262. Please be prepared to describe the product that needs service and the nature of the problem. A purchase receipt is required. All repaired and replacements must be authorized in advance. Service options, parts availability and response times will vary. You are responsible for delivery and the cost of delivery of the product or any parts to the authorized service center for replacement, per our instructions.

Limits and Exclusions: Coverage under this Limited Warranty is limited to the Continental United States of America. This warranty does not apply to: a) damage caused by failure to follow instructions relating to the product’s use or the installation of components; b) damage caused by accident, abuse, misuse, fire, floods, earthquake or other external causes; c) damage caused by service performed by anyone who is not a representative of RTA Products, LLC; d) accessories used in conjunction with a covered product; e) a product or part that has been modified to alter functionality or capability; f) items intended to be periodically replaced by the purchaser during the normal life of the product

including, without limitation, batteries or light bulbs; g) any product sold “as is” including, without limitation, floor demonstration models and refurbished items; or h) a product that is used commercially or for a commercial purpose.

RTA Products, LLC shall not be liable for incidental or consequential damages resulting from the use of this product, or arising out of any breach of this warranty. To the extent permitted by applicable law, RTA Products, LLC disclaims any and all statutory or implied warranties, including, without limitation, warranties of merchantability, fitness for a particular purpose and warranties against hidden or latent defects. If RTA Products, LLC cannot lawfully disclaim statutory or implied warranties, then to the extent permitted by law, all such warranties shall be limited in duration to the duration of this express warranty.

Some states disallow the exclusion or limitation of incidental or consequential damages or how long an implied warranty lasts, so the above exclusions or limitations may not apply to you. This warranty gives you specific legal rights and you may also have other rights, which vary from state to state.

THE SHARPER IMAGE® name and logo are registered trademarks.
Manufactured and Marketed by RTA Products, LLC under license.

© The Sharper Image. All Rights Reserved

CONTACT INFORMATION

DO NOT return to the store or online retailer if parts are missing or damaged.

For inquiries, please call us at Toll-Free 1-866-782-8262 , e-mail us at support@rtaproducts.com.

To ensure a timely delivery, please include the following:

1. Full Name
2. Physical Address
3. Phone Number
4. Item style number
5. Part Number(s) or Letter(s)
6. Quantity
7. Please provide a brief description of the reason for your request.

Our Customer Service Representatives will be available to assist you Monday –Friday 9:00am to 4:30pm Eastern Standard Time

BATTERY PRECAUTIONS

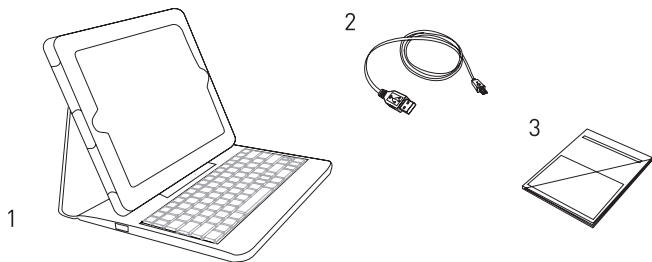
Dispose of old batteries properly. Do not dispose of batteries in a fire.

Do not leave batteries where a young child or pet could play with or swallow them. If the batteries are swallowed, contact a physician immediately.

Batteries may explode if mistreated. Do not attempt to recharge or disassemble the batteries.

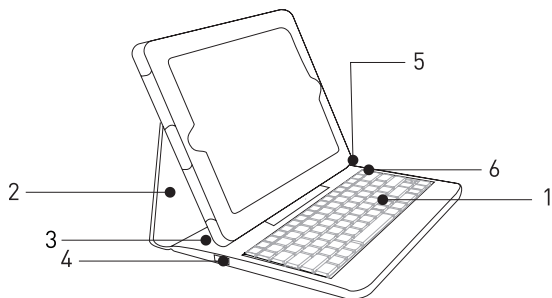
Use only fresh batteries of required size and type. Do not mix old and new batteries, different types of batteries, or rechargeable batteries of different capacities.

PACKAGE INCLUDES



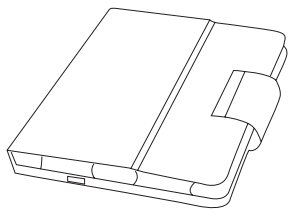
1. Case
2. Charging Cable
3. Instruction Manual

PRODUCT DETAILS

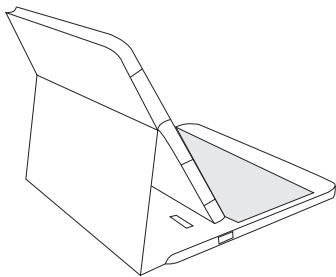


1. Keyboard
2. Adjustable Stand
3. LED Indicators
4. Charging Port
5. Bluetooth Sync Button
6. Power On/Off Switch Button

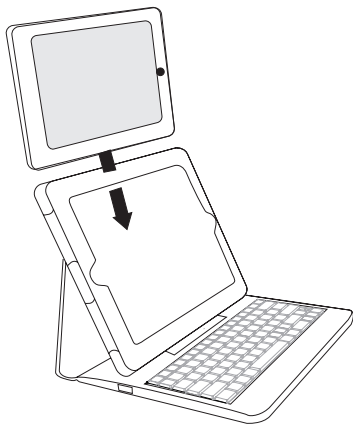
INSTALLATION



1. Open the case.



2. Place the adjustable stand upright to set your desired viewing angle.



3. Insert the iPad into the case as shown.

CHARGING YOUR KEYBOARD

1. Connect the USB charging cable included between your case and either a laptop computer USB port or to the wall charger that comes with your iPad.
2. Once connected the charging LED will illuminate blue and will shut off when charging is complete.
3. Do not charge for more than 6.5 hours. The keyboard takes approximately 6.5 hours to charge for up to 120 hours of use.
4. Turn keyboard power “Off” when not in use.

HOW TO SYNC THE BLUETOOTH

1. Make sure the keyboard is fully charged before use.
2. Make sure the power On/Off button is “On.”
3. The Bluetooth status LED light indicator (Code/L.V.) will flash for 5 seconds after power is “On,” the keyboard is now ready for sync.
4. Press the Sync button on the side of the keyboard, the Bluetooth status LED light (Code/L.V.) will begin to blink when syncing starts. Use a pointed object such as a pen to press the button.
5. The iPad screen will display a “Passkey Code,” enter this code into the keyboard and then press “Enter.” The Bluetooth Status Light Indicator will then turn off. Your sync is successful.
6. To confirm the sync, check the Bluetooth option on your iPad, you should see the word “Connected” next to the keyboard name “H2 Bluetooth.”

Note:

1. You will see the name “H2 Bluetooth” under the Bluetooth section on the iPad.
2. In case the Bluetooth is disconnected, please repeat all of the above steps.
3. The Bluetooth Keyboard will automatically go into standby mode after 15 minutes of non-use, in order to preserve battery life. Just press any key to reactivate it.

IMPORTANT INFORMATION

1. This product was designed to be used for the iPad 1 & 2 only.
2. The keyboard is not waterproof, do not use if liquid is accidentally spilled.
3. It includes a lithium battery, do not expose to extreme heat or fire.
4. Turn keyboard power “Off” when not in use to save battery charge.

SPECIFICATIONS

Bluetooth®	V2.0
Bluetooth® Working Distance	Up to 32’
Operating Voltage.....	DC 3.3 V
Charging Means.....	USB 2.0
Charging Time.....	Constant Voltage 4.2 V for 6.5 hrs
Battery Usage Time.....	Up to 120 continuous hours
Battery Life.....	3 years