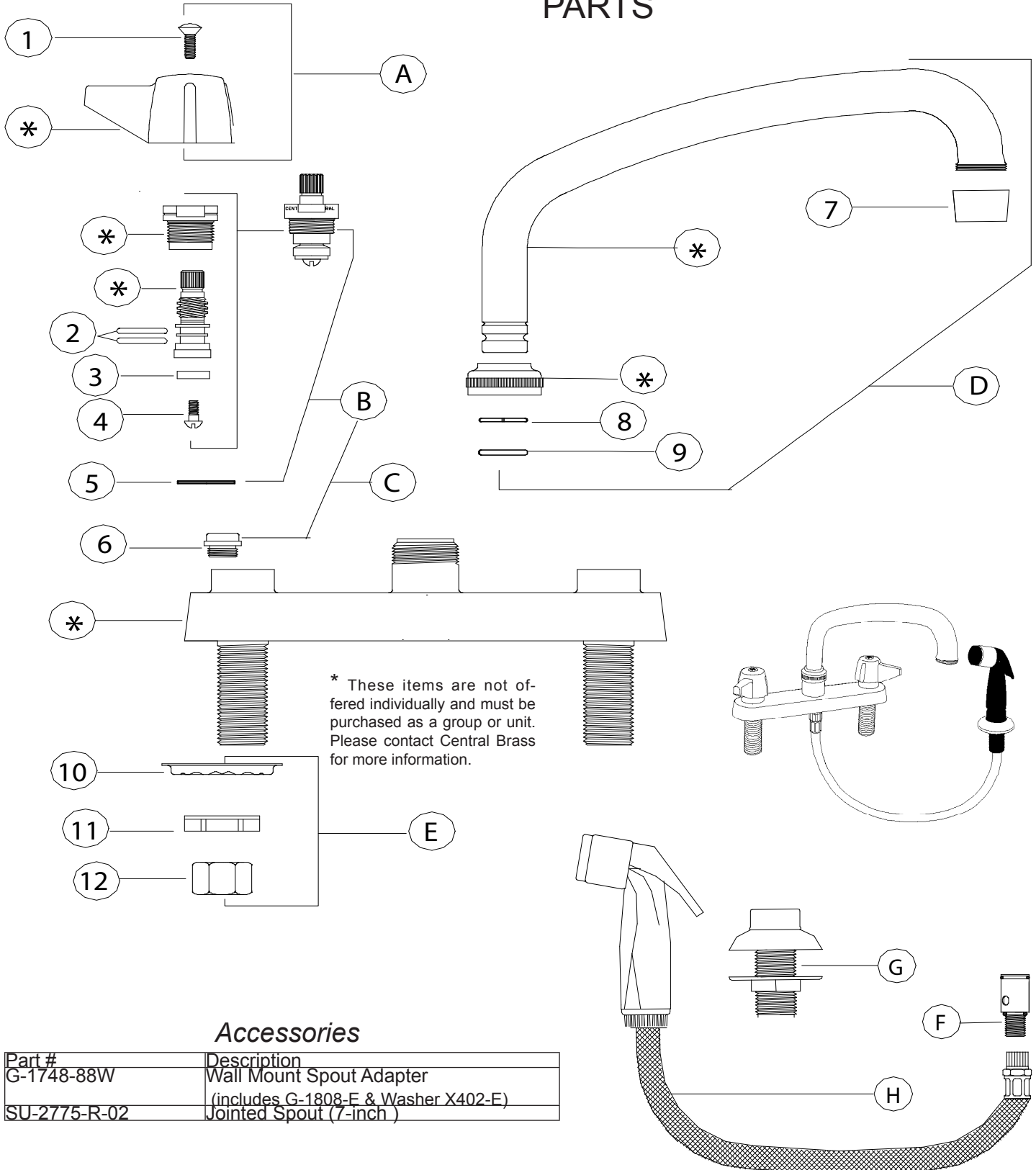


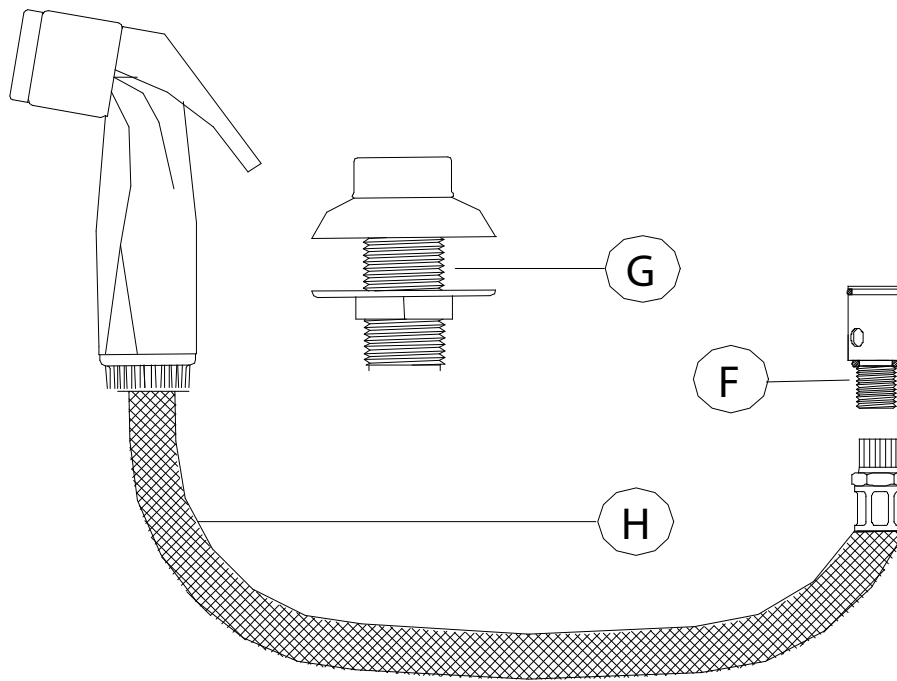
REPLACEMENT PARTS



Accessories

Part #	Description
G-1748-88W	Wall Mount Spout Adapter (includes G-1808-E & Washer X402-E)
SU-2775-R-02	Jointed Spout (7-inch)

Hose & Spray REPLACEMENT PARTS Cartridge Style



#	Part #	Description
F	SU-266	Diverter Cartridge (Cartridge Style)
G	SU-2987-DA	Guide for Hose & Spray
H	266-A	Hose & Spray assembly (female connector for Cartridge Style)

REPLACEMENT PARTS

#	Part #	Description
A	G-523-C	Lever Handle C Indexed with Screw (X107-F)
A	G-523-H	Lever Handle H Indexed with Screw (X107-F)
B	G-453-EL	Cold O-Ring Stem Assembly with Gasket (X1028-Y)
B	G-453-ER	Hot O-Ring Stem Assembly with Gasket (X1028-Y)
C	K-453-C	Cold O-Ring Stem Assembly with Gasket (X1028-Y) and Seat (X263-BC)
C	K-453-H	Hot O-Ring Stem Assembly with Gasket (X1028-Y) and Seat (X263-BC)
D	SU-363-RA	8-Inch Swivel Spout with Aerator (30-M)
E	G-913-A	Coupling Nut group (1 set)
F	SU-266	Diverter Cartridge
G	SU-2987-DA	Guide for Hose & Spray
H	266-A	Hose & Spray assembly (female connector)
1	X107-F	Handle Screw (25 pcs per pack)
2	X1038-453	O-Rings (25 pcs per pack)
3	X901-WNN	Stem Seat Washer (25 pcs per pack)
4	X104	Seat Washer Screw (25 pcs per pack)
5	X1028-Y	Gasket (25 pcs per pack)
6	X263-BC	Replacement Seat (10 pcs per pack)
7	30-M	Aerator
8	X166-FN	Snap Ring (6 pcs per pack)
9	X1038-KN	Spout O-Ring (25 pcs per pack)
10	X54	Crowfoot Washer (10 pcs per pack)
11	X7133-AZ	Locknut (10 pcs per pack)
12	X4015	Coupling Nut (4 pcs per pack)

OPTIONS & REPLACEMENT PARTS for options (see replacement part sheets for individual items)

Suffix Number	Replaces Item #	Part Number	Description
2	D	SU-363-JA	10-Inch Swivel Spout with Aerator (30-M)
3	D	SU-363-LA	12-Inch Swivel Spout with Aerator (30-M)
4	D	SU-363-MA	14-Inch Swivel Spout with Aerator (30-M)

- If faucet has round handles, use two Hot stem assemblies
- If faucet has lever handles, use one Hot and one Cold stem assemblies

See **0125, 0127 & 0128** for items with more options