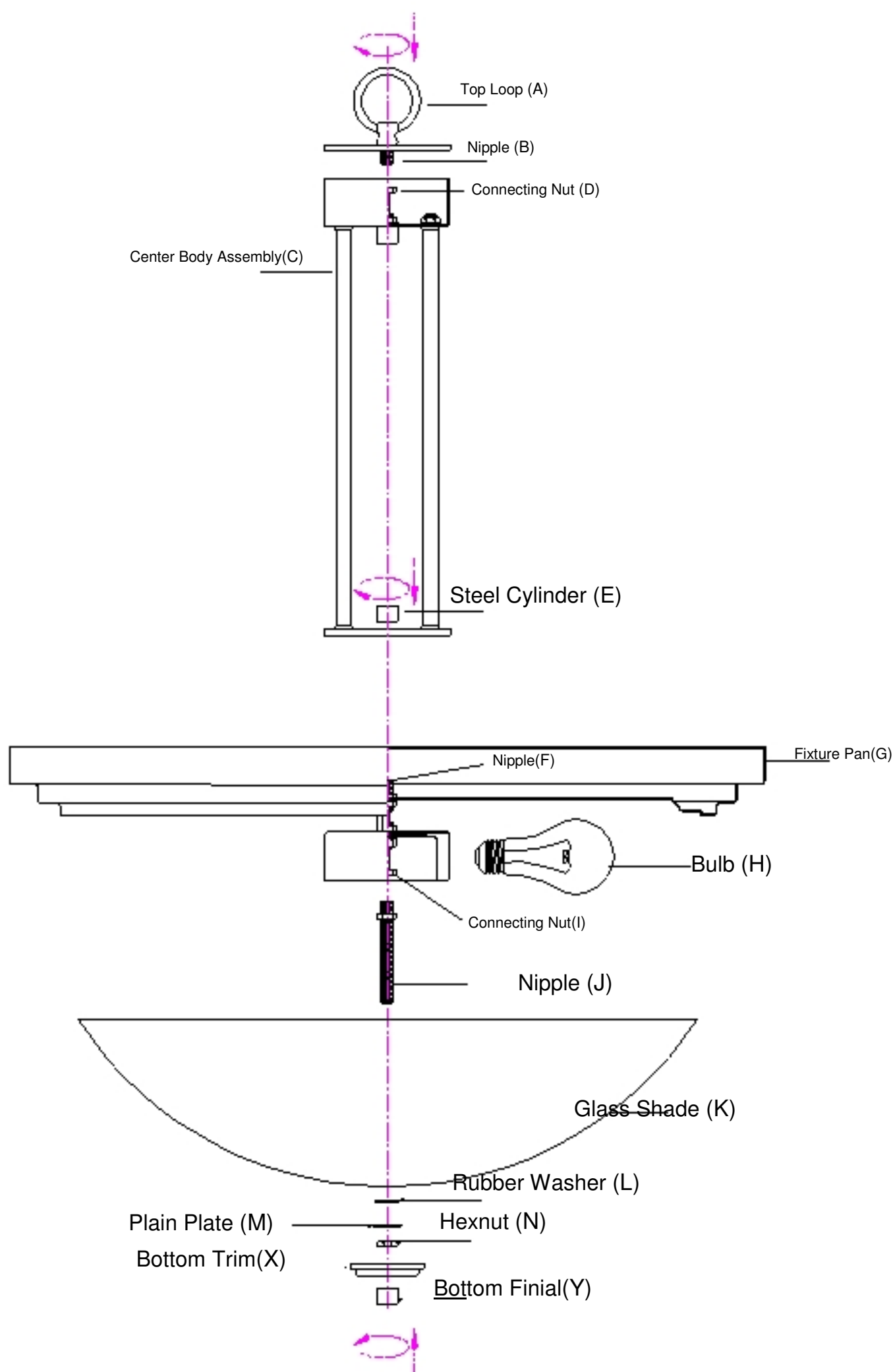


ASSEMBLY INSTRUCTION

4203-3SN



Assembly Procedures:

1. Screw Center Body Assembly(C) into the Nipple(F) of Bottom Arm Assembly (G) with the Steel Cylinder (E) tightly;
2. Turn the Nipple (B) of Top Loop (A) into the Connecting Nut (D) and secure them in place;
3. Install Bulbs (H);
4. Screw the Nipple (J) into the Connect Nut (I) of Fixture Pan (G) in place;
5. Pass the Nipple (J) through Glass Shade (K), Rubber Washer (L) and Plain Plate (M), and then screw them tightly with Hexnut (N);
6. Fix Bottom Trim(X) onto the Nipple (J) with Bottom Finial(Y).