



Middle Atlantic Products, Inc.

middleatlantic.com

EIA/TIA Compliant

UL LISTED

The SR Series pivoting rack enclosures are designed to mount to the wall, while the entire weight of the system is safely supported by the floor

Features

- Available in 22", 28" and 32" depths
- Tool-free Quick-Mount™ system allows for easy mounting of the center section to the backpan on the job site
- Optional zero clearance latch allows side-by-side or corner mounting to save room
- 16-gauge steel construction with 1/8" thick laser-cut corner braces
- Bottom cable entry platform supports weight of rack on floor and provides attractive shroud to conceal conduit stubs
- Low-friction wear strip on bottom platform allows rack to swing open easily
- Adjustable 10-32 threaded front rackrail with marked rackspace increments, rear rackrail optional
- Knockout for low-voltage Decora® devices in face of center section, top and bottom
- 12-1/2" x 12-1/2" opening in the backpan for electrical pullbox
- Laser knockouts in the center section, accommodate two 4-1/2" fans, top and bottom for cooling
- Durable black textured powder coat finish
- UL Listed in the US and Canada



SR-40-22

Pivoting Rack Accessories

AC POWER STRIPS
COPPER BUSS BAR
REAR RAIL KIT
FRONT DOORS
CABLE LACING BARS
BLACK TEXTURED TOUCH-UP PAINT
SUB-PLATE MOUNTING KIT

for details- see Master Catalog or
visit www.middleatlantic.com

Architects' and Engineers' Specifications

EIA compliant 19" pivoting equipment rack shall be Middle Atlantic Products model # SR-__-__ (refer to chart) shall have __ useable rackspaces and a useable depth of __ (refer to chart). Overall dimensions of rack shall be __ x 23.56" W x __ D (refer to chart). SR-__-__ shall have a weight capacity of 500 lbs. Tool-free Quick-Mount™ system shall enable easy installation. Rack shall be constructed of the following materials: top and base shall be 14-gauge steel, center section and backpan shall be 16-gauge steel, all structural elements shall be finished in a durable black powder coat. Rackrail shall be 11-gauge steel with tapped 10-32 holes in universal EIA spacing, finished in durable black e-coat with marked rackspaces. Bottom shall have a cable entry platform with removable 4 space (7") front access cover, supports weight of rack on floor, while providing an attractive shroud to conceal conduit stubs. Rack shall be UL Listed in the US and Canada. Rack shall be warranted to be free from defects in material or workmanship under normal use and conditions for the lifetime of the product.

OPTIONS

- Front doors shall be reinforced 16-gauge steel, model # FD-XX (solid), PFD-XX (plexi), VFD-XX (vented, 22% open area), LVFD-40 (vented, 68% open area), XX=# of rackspaces of SR rack
- Keyless latch to replace key lock on front door shall be model # LATCH
- Rear rail kit shall be model # DWR-RR24 (24 space), DWR-RR40 (40 space), model # DWR-RR46 (46 space), 11-gauge, 10-32 threaded, sold in pairs, hardware included
- Sub-plate mounting kit shall be model # SR-SUB. SR-SUB shall mount up to (4) 89-D type brackets, (4) 1900 boxes or (1) Raco 3 gang box. SR Series pivoting racks can mount up to 4 SR-SUB sub-plate mounting kits (2 for 24 space models)
- Zero clearance latch shall allow side-by-side or corner mounting, shall be model # DWRSR-ZL

electronic version available at middleatlantic.com

Engineered Mounting Solutions

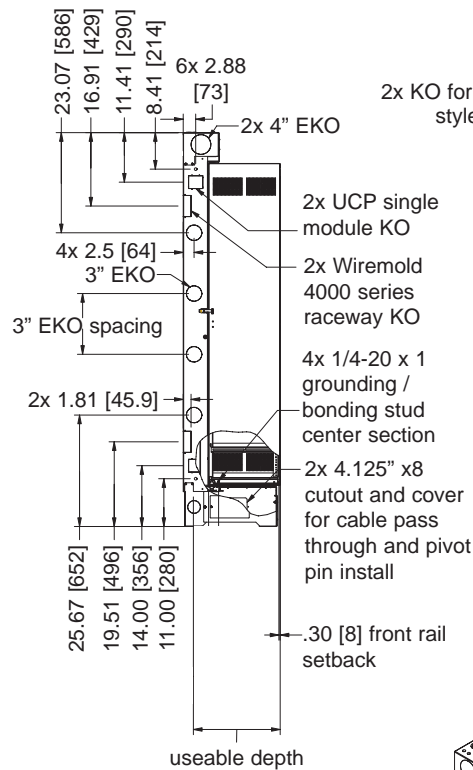
US: New Jersey • California • Illinois • Voice: 973-839-1011 Fax: 973-839-1976 • middleatlantic.com
Canada: Ontario • British Columbia • Voice: 613-836-2501 Fax: 613-836-2690 • middleatlantic.ca

SR Series basic dimensions

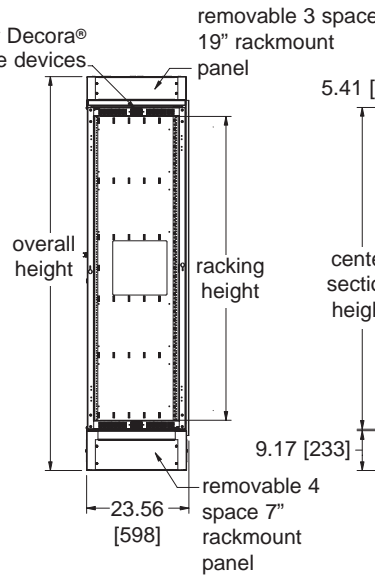
All dimensions in inches unless otherwise noted [All dimensions in brackets are millimeters]



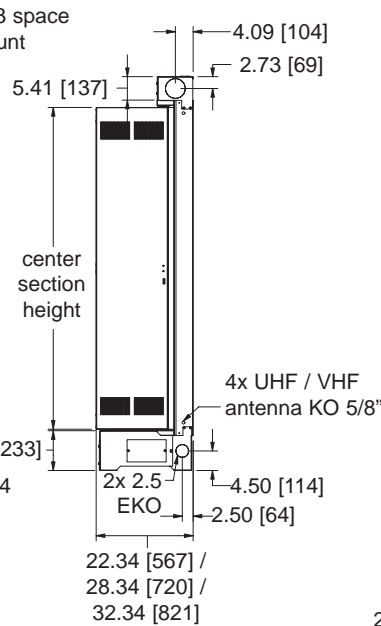
LEFT SIDE VIEW



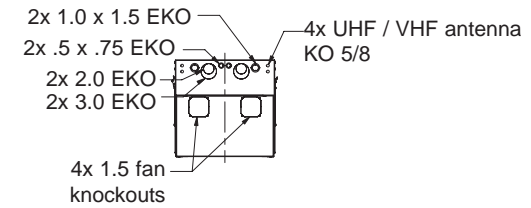
FRONT VIEW



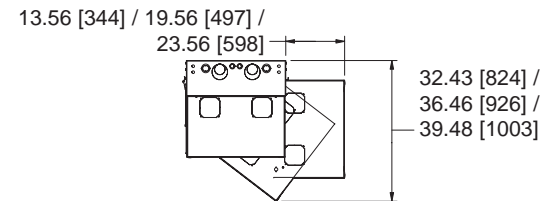
RIGHT SIDE VIEW



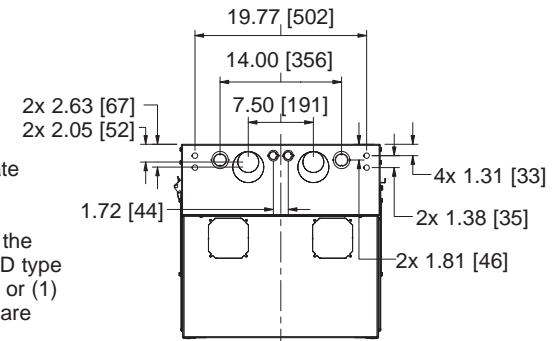
TOP SIDE VIEW



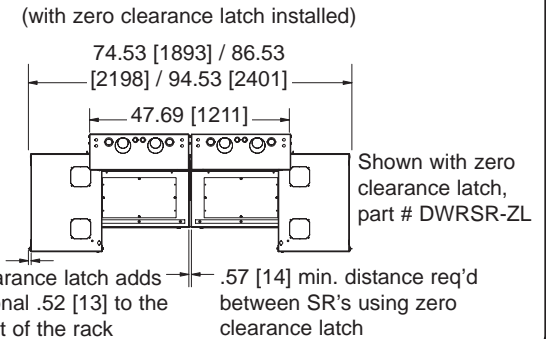
CENTER SECTION CLEARANCE



TOP VIEW KNOCKOUTS



TOP VIEW OPEN POSITION



SR shown with optional PD-2415SC power strip installed (PD-815SC for 24 space model)

SR shown with optional zero clearance latch installed (DWRSR-ZL)

SR-SUB optional sub-plate mounting kit

Each SR-SUB allows for the mounting of up to (4) 89-D type brackets, (4) 1900 boxes or (1) Raco 3 gang box. Hardware included.

Mount up to 4 SR-SUB (2 for 24 space models) sub-plate mounting kits to each SR backpan using mounting holes and included hardware.

(Shown with main body of enclosure removed for clarity)

Mounting holes located 16" apart for stud alignment

Part #	Overall Height	Center Section Height	Overall Depth	Useable Depth	Racking Height	Rack Spaces	3" EKO Spacing
SR-24-28	62.75 [1594]	46.13 [1172]	28.34 [720]	26.00 [660]	42.00 [1067]	24 spaces	N/A
SR-24-32	62.75 [1594]	46.13 [1172]	32.34 [821]	30.00 [762]	42.00 [1067]	24 spaces	N/A
SR-40-22	90.75 [2305]	74.13 [1883]	22.34 [567]	20.00 [508]	70.00 [1778]	40 spaces	14.00 [356]
SR-40-28	90.75 [2305]	74.13 [1883]	28.34 [720]	26.00 [660]	70.00 [1778]	40 spaces	14.00 [356]
SR-40-32	90.75 [2305]	74.13 [1883]	32.34 [821]	30.00 [762]	70.00 [1778]	40 spaces	14.00 [356]
SR-46-28	101.25 [2572]	84.63 [2150]	28.34 [720]	26.00 [660]	80.50 [2045]	46 spaces	17.50 [445]