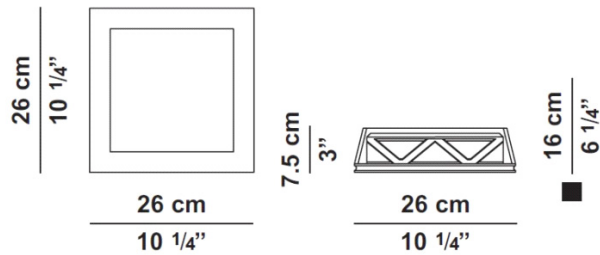
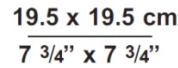
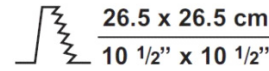
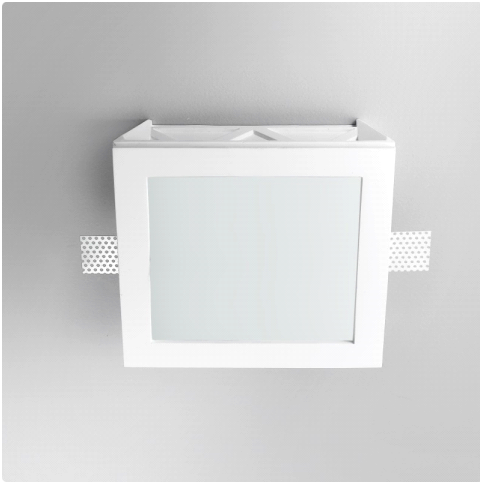


Date: \_\_\_\_\_


Project: \_\_\_\_\_

Fixture Type: \_\_\_\_\_

Specifier/Rep: \_\_\_\_\_



■ WITH METAL FRAME

Certified by  for North American Standard

**APPLICATION:**

Recessed - Trimless

**CONSTRUCTION:**

Fixture Material:

Plaster

Fixture Finish:

White

Max. Overall Height:

N/A

Other Available Size/Lamp/Finish Options

No Option

**Component Requirement:**

Complete Unit, no component required

**ELECTRICAL:**

Lamp Category:

Fluorescent

Power Supply

Electronic Ballast

Lamp Type:

q-3 /q-4

Lamp Base:

GX24

Number of Lamps:

2

Voltage/Constant Current:

120

(277v or 347v available upon request)

Max Wattage per Lamp:

26

Emergency: N/A

IP RATING:

N/A

**OPTICS:**

Diffusor Material:

N/A

Diffusor Finish:

N/A

Reflector:

N/A

Efficiency:

N/A

**NOTES:**

Fixed Plaster fluorescent light (electronic ballast included)

Date: \_\_\_\_\_

Project: \_\_\_\_\_

Fixture Type: \_\_\_\_\_

Specifier/Rep: \_\_\_\_\_

## Installation Guide

