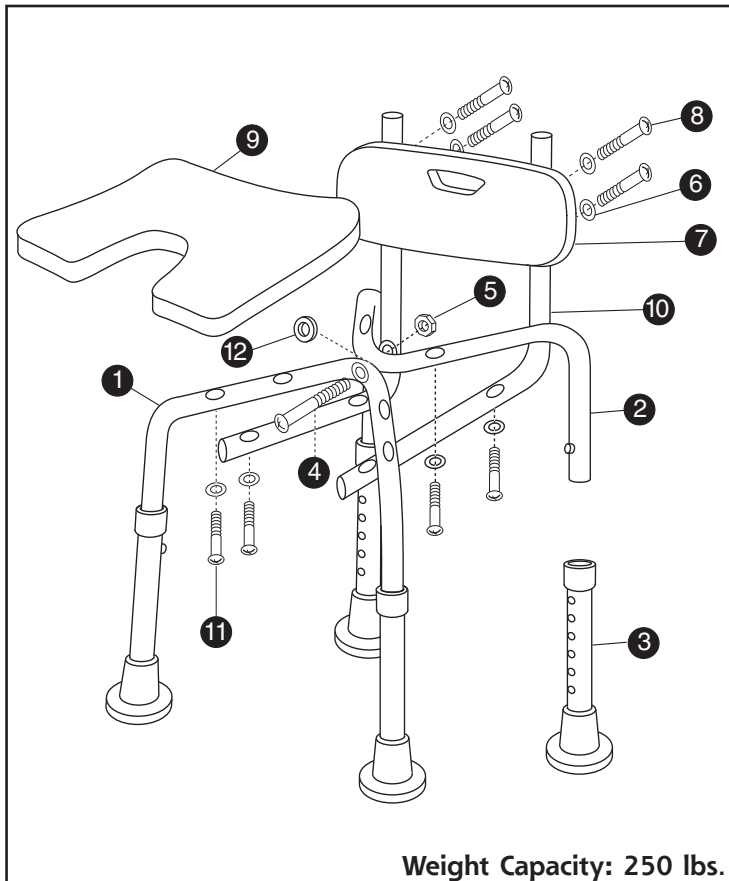


Hygienic BATH CHAIR



Assembly Instructions

- ▶ 1. Insert washer (12) between the front frame (1) and back frame (2). Insert bolt (4) through the center hole on the front and back frame (1 & 2) and secure with washer (6) and nut (5).
- ▶ 2. Place the plastic seat (9) upside down on a flat surface. Place the leg assembly (1&2) upside down on top of the seat and align the holes on the seat with the holes on the leg assembly. Use the screws (11) and washers (6) to secure the leg assembly to the seat.
- ▶ 3. Place the back brace bars (10) underneath the seat and align the holes on the frame with the holes on the back brace bars (10). Use the screws (8) and washers (6) to secure the back brace bars to the legs.
- ▶ 4. Turn seat upright and place the backrest (7) in front of the back brace bars (10) and align the holes on the backrest with the holes on the back brace (10). Use the screws (8) and washers (6) to secure the backrest to the back brace.
- ▶ 5. Insert the extension legs (3) into the front and back frame (1&2). Adjust the legs in 1" increments to the desired height, and lock the pins into place.

CAUTION: Make sure all screws are tightened securely. For your safety, the four extension legs must always be locked into the same height position. All pins must be pushed completely through the pinholes before using.

NOTE: If any parts are missing, do not return to the place of purchase. Contact us at 877-505-6190.

Assembly Code

- | | |
|----------------------|------------------------|
| ▶ 1 - Front Frame | ▶ 7 - Backrest |
| ▶ 2 - Back Frame | ▶ 8 - Screws |
| ▶ 3 - Extension Legs | ▶ 9 - Plastic Seat |
| ▶ 4 - Bolt | ▶ 10 - Back Brace Bars |
| ▶ 5 - Nut | ▶ 11 - Screws |
| ▶ 6 - Washers | ▶ 12 - Washer |

Distributed by:

Duro-Med Industries
Div. of DMS Holdings Inc.
1931 Norman Drive
Waukegan, IL 60085 USA
www.duromed.com

Made in China

Toll-Free Customer
Care Help Line
877-505-6190
Monday - Friday, 8:00 am - 4:30 pm CST

#910-1712-1999 04/06
©2006 Duro-Med Industries

CAUTION

This product contains natural rubber latex which may cause allergic reactions.

Safety

Security

Durability