

FILLABLE PDF ORDER FORM USAGE INSTRUCTIONS

For your convenience and processing efficiency, this order form contains fillable pdf fields that can be filled in electronically via **Adobe® Acrobat®** or **Adobe® Reader®** and then saved, printed and/or submitted to our Customer Service team for order or quote processing.

Please follow the following steps to complete this form* electronically based on the Adobe software you currently have on your operating system.

[Click here](#) to download Adobe Reader for free or to purchase Adobe Acrobat software.

USERS WITH **ADOBE ACROBAT**

TO SAVE ELECTRONIC COPY:

1. Fill out the order form completely
2. In the top navigation menu, go to FILE, then SAVE AS
3. Rename the file and select the destination where you'd like the file saved and save

TO SUBMIT FOR ORDER OR QUOTE:

1. Follow instructions above for saving a copy of the file
2. Click on the "Submit" button at the top of the first page of the completed and saved order form.
3. This action will open up a pop-up asking you to select your E-mail client. Select which one is applicable to you and then OK. (See figure 1)
4. The next pop-up will ask you if you want to send a data file or print the form. Select SEND DATA FILE (See figure 2)
5. An e-mail message will pop up with the order form as an attachment.
6. You may want to copy yourself to keep as a record
7. Send e-mail.

Figure 1

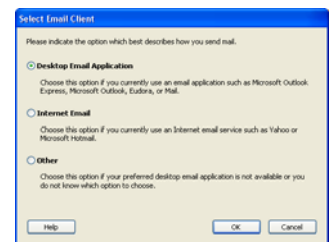
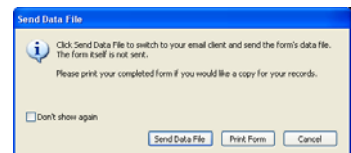


Figure 2



USERS WITH **ADOBE READER**

TO SAVE ELECTRONIC COPY:

1. Fill out the order form completely (Please note that you will **not** be able to make any additional changes once the order form is saved).
2. In the top navigation menu, go to FILE, then PRINT
3. Select Adobe PDF from your list of printers and print the file
4. Select the destination where you would like the file saved, rename the file and save

TO SUBMIT FOR ORDER OR QUOTE:

1. Follow the document saving instructions listed above
2. Attach your saved file to an e-mail and send to the following e-mail box: orders@sunmed.com

**Please note that this order forms fillable fields are not programmed with logic and the fields will not prevent you from selecting options that are no-go's so please review the footnotes carefully. Sunrise Medical does offer an online product configurator that's programmed with all no-go information. To complete an order on the configurator, please visit www.sunrisemedical.com and log-in to your dealer account.*



JAY[®] Ion[™] Cushion January 2013

Mark For:

Submitting for: Quote Order

Date: _____
 Dealer Acct #: _____
 Dealer: _____
 Dealer Contact: _____
 Dealer Address: _____
 Dealer City: _____ ST: _____ ZIP: _____
 Dealer Phone: () _____ Fax: () _____
 Confirmation Email: _____
 Confirm Via: Fax Email

PO#: _____
ADDITIONAL SHIPPING INFORMATION
 Ship To: _____
 Attention: _____
 Address: _____
 Address: _____
 Ship To City: _____ ST: _____ ZIP: _____
 Ship To Phone: () _____ Fax: () _____

The **HCPCS CODES** provided are based on code verification through PDAC or our interpretation of the code definitions.
 The use of **HCPCS CODES** does not ensure coverage or payment. For coverage information, verify the appropriate payer's coverage policy.

✓ Option # HCPCS Definition Price

JAY ION CUSHION

JAY Ion Cushion

- JIONXXYY E2607 JAY Ion Cushion 14-21 wide \$395.00
 Note: XX = Width and YY = Depth (Select appropriate assembly # on page 2)
 Includes: X-Static fabric outer cover, inner cover, and foam base
- JIONXXYY E2608 JAY Ion Cushion 22-24 wide \$495.00
 Note: XX = Width and YY = Depth (Select appropriate assembly # on page 2)
 Includes: X-Static fabric outer cover, inner cover, and foam base

JAY Ion Cushion w/ Second Outer Cover

- JIONXXYY-2 E2607 JAY Ion Cushion 14-21 wide \$495.00
 Note: XX = Width and YY = Depth (Select appropriate assembly # on page 2)
 Includes: (2) X-Static fabric outer cover, (1) inner cover, and (1) foam base
- JIONXXYY-2 E2608 JAY Ion Cushion 22-24 wide \$595.00
 Note: XX = Width and YY = Depth (Select appropriate assembly # on page 2)
 Includes: (2) X-Static fabric outer cover, (1) inner cover, and (1) foam base

JAY Ion Size Matrix

		WIDTH											
		14	15	16	17	18	19	20	21	22	23	24	
DEPTH	14							N/A	N/A	N/A	N/A	N/A	N/A
	15								N/A	N/A	N/A	N/A	N/A
	16								N/A	N/A	N/A	N/A	N/A
	17										N/A	N/A	N/A
	18										N/A	N/A	N/A
	19	N/A											
	20	N/A											
	21	N/A											
	22	N/A	N/A										
	23	N/A	N/A	N/A									
24	N/A	N/A	N/A	N/A									

= Standard Offering
 JYW = Offered Via Jay Your Way
 N/A = Not available

JAY Ion

Outer Cover

The JAY Ion outer cover is designed to promote comfort, convenience and breathability by the use of "X-Static" material and 3DX Spacer Fabric.



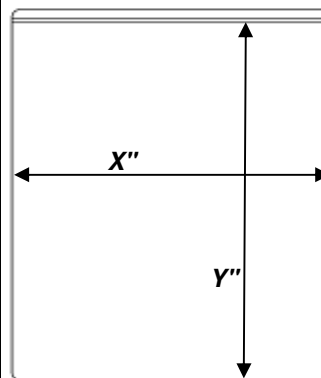
Inner Cover

The water resistant inner cover, combined with the Aquaguard[™] Zipper and anti wicking thread provides the ultimate protection against odor.



JAY Ion Measuring Guide

Measurements made from completed cushion with covers.



Bottom View

Width

X = Width
 Note: Measurement made from bottom outside edge to outside edge of cushion.
 Ex: JION1618 X = 16"

Depth

Y = Depth
 Note: Measurement made from bottom rear edge to front lower edge of cushion.
 Ex: JION1618 Y = 18"

Note: To order via JAY Your Way add a "M" to the front of the part number and follow the prompts. For additional modifications see Page 2 or visit www.sunrisemedical.com to view even more!

Please visit www.sunparts.us for spare parts information.

JAY Ion Cushion									
✓	Option #	HCPCS	Definition	Price	✓	Option #	HCPCS	Definition	Price
<input type="checkbox"/>	JION1414	E2607	JAY ION 14" X 14"	\$395	<input type="checkbox"/>	JION1918	E2607	JAY ION 19" X 18"	\$395
<input type="checkbox"/>	JION1415	E2607	JAY ION 14" X 15"	\$395	<input type="checkbox"/>	JION1919	E2607	JAY ION 19" X 19"	\$395
<input type="checkbox"/>	JION1416	E2607	JAY ION 14" X 16"	\$395	<input type="checkbox"/>	JION1920	E2607	JAY ION 19" X 20"	\$395
<input type="checkbox"/>	JION1417	E2607	JAY ION 14" X 17"	\$395	<input type="checkbox"/>	JION1921	E2607	JAY ION 19" X 21"	\$395
<input type="checkbox"/>	JION1418	E2607	JAY ION 14" X 18"	\$395	<input type="checkbox"/>	JION1922	E2607	JAY ION 19" X 22"	\$395
<input type="checkbox"/>	JION1514	E2607	JAY ION 15" X 14"	\$395	<input type="checkbox"/>	JION1923	E2607	JAY ION 19" X 23"	\$395
<input type="checkbox"/>	JION1515	E2607	JAY ION 15" X 15"	\$395	<input type="checkbox"/>	JION1924	E2607	JAY ION 19" X 24"	\$395
<input type="checkbox"/>	JION1516	E2607	JAY ION 15" X 16"	\$395	<input type="checkbox"/>	JION2015	E2607	JAY ION 20" X 15"	\$395
<input type="checkbox"/>	JION1517	E2607	JAY ION 15" X 17"	\$395	<input type="checkbox"/>	JION2016	E2607	JAY ION 20" X 16"	\$395
<input type="checkbox"/>	JION1518	E2607	JAY ION 15" X 18"	\$395	<input type="checkbox"/>	JION2017	E2607	JAY ION 20" X 17"	\$395
<input type="checkbox"/>	JION1519	E2607	JAY ION 15" X 19"	\$395	<input type="checkbox"/>	JION2018	E2607	JAY ION 20" X 18"	\$395
<input type="checkbox"/>	JION1520	E2607	JAY ION 15" X 20"	\$395	<input type="checkbox"/>	JION2019	E2607	JAY ION 20" X 19"	\$395
<input type="checkbox"/>	JION1521	E2607	JAY ION 15" X 21"	\$395	<input type="checkbox"/>	JION2020	E2607	JAY ION 20" X 20"	\$395
<input type="checkbox"/>	JION1614	E2607	JAY ION 16" X 14"	\$395	<input type="checkbox"/>	JION2021	E2607	JAY ION 20" X 21"	\$395
<input type="checkbox"/>	JION1615	E2607	JAY ION 16" X 15"	\$395	<input type="checkbox"/>	JION2022	E2607	JAY ION 20" X 22"	\$395
<input type="checkbox"/>	JION1616	E2607	JAY ION 16" X 16"	\$395	<input type="checkbox"/>	JION2023	E2607	JAY ION 20" X 23"	\$395
<input type="checkbox"/>	JION1617	E2607	JAY ION 16" X 17"	\$395	<input type="checkbox"/>	JION2024	E2607	JAY ION 20" X 24"	\$395
<input type="checkbox"/>	JION1618	E2607	JAY ION 16" X 18"	\$395	<input type="checkbox"/>	JION2117	E2607	JAY ION 21" X 17"	\$395
<input type="checkbox"/>	JION1619	E2607	JAY ION 16" X 19"	\$395	<input type="checkbox"/>	JION2118	E2607	JAY ION 21" X 18"	\$395
<input type="checkbox"/>	JION1620	E2607	JAY ION 16" X 20"	\$395	<input type="checkbox"/>	JION2119	E2607	JAY ION 21" X 19"	\$395
<input type="checkbox"/>	JION1621	E2607	JAY ION 16" X 21"	\$395	<input type="checkbox"/>	JION2120	E2607	JAY ION 21" X 20"	\$395
<input type="checkbox"/>	JION1622	E2607	JAY ION 16" X 22"	\$395	<input type="checkbox"/>	JION2121	E2607	JAY ION 21" X 21"	\$395
<input type="checkbox"/>	JION1714	E2607	JAY ION 17" X 14"	\$395	<input type="checkbox"/>	JION2122	E2607	JAY ION 21" X 22"	\$395
<input type="checkbox"/>	JION1715	E2607	JAY ION 17" X 15"	\$395	<input type="checkbox"/>	JION2123	E2607	JAY ION 21" X 23"	\$395
<input type="checkbox"/>	JION1716	E2607	JAY ION 17" X 16"	\$395	<input type="checkbox"/>	JION2124	E2607	JAY ION 21" X 24"	\$395
<input type="checkbox"/>	JION1717	E2607	JAY ION 17" X 17"	\$395	22" & Greater in Width				
<input type="checkbox"/>	JION1718	E2607	JAY ION 17" X 18"	\$395	<input type="checkbox"/>	JION2217	E2608	JAY ION 22" X 17"	\$495
<input type="checkbox"/>	JION1719	E2607	JAY ION 17" X 19"	\$395	<input type="checkbox"/>	JION2218	E2608	JAY ION 22" X 18"	\$495
<input type="checkbox"/>	JION1720	E2607	JAY ION 17" X 20"	\$395	<input type="checkbox"/>	JION2219	E2608	JAY ION 22" X 19"	\$495
<input type="checkbox"/>	JION1721	E2607	JAY ION 17" X 21"	\$395	<input type="checkbox"/>	JION2220	E2608	JAY ION 22" X 20"	\$495
<input type="checkbox"/>	JION1722	E2607	JAY ION 17" X 22"	\$395	<input type="checkbox"/>	JION2221	E2608	JAY ION 22" X 21"	\$495
<input type="checkbox"/>	JION1723	E2607	JAY ION 17" X 23"	\$395	<input type="checkbox"/>	JION2222	E2608	JAY ION 22" X 22"	\$495
<input type="checkbox"/>	JION1814	E2607	JAY ION 18" X 14"	\$395	<input type="checkbox"/>	JION2223	E2608	JAY ION 22" X 23"	\$495
<input type="checkbox"/>	JION1815	E2607	JAY ION 18" X 15"	\$395	<input type="checkbox"/>	JION2224	E2608	JAY ION 22" X 24"	\$495
<input type="checkbox"/>	JION1816	E2607	JAY ION 18" X 16"	\$395	<input type="checkbox"/>	JION2319	E2608	JAY ION 23" X 19"	\$495
<input type="checkbox"/>	JION1817	E2607	JAY ION 18" X 17"	\$395	<input type="checkbox"/>	JION2320	E2608	JAY ION 23" X 20"	\$495
<input type="checkbox"/>	JION1818	E2607	JAY ION 18" X 18"	\$395	<input type="checkbox"/>	JION2321	E2608	JAY ION 23" X 21"	\$495
<input type="checkbox"/>	JION1819	E2607	JAY ION 18" X 19"	\$395	<input type="checkbox"/>	JION2322	E2608	JAY ION 23" X 22"	\$495
<input type="checkbox"/>	JION1820	E2607	JAY ION 18" X 20"	\$395	<input type="checkbox"/>	JION2323	E2608	JAY ION 23" X 23"	\$495
<input type="checkbox"/>	JION1821	E2607	JAY ION 18" X 21"	\$395	<input type="checkbox"/>	JION2324	E2608	JAY ION 23" X 24"	\$495
<input type="checkbox"/>	JION1822	E2607	JAY ION 18" X 22"	\$395	<input type="checkbox"/>	JION2419	E2608	JAY ION 24" X 19"	\$495
<input type="checkbox"/>	JION1823	E2607	JAY ION 18" X 23"	\$395	<input type="checkbox"/>	JION2420	E2608	JAY ION 24" X 20"	\$495
<input type="checkbox"/>	JION1824	E2607	JAY ION 18" X 24"	\$395	<input type="checkbox"/>	JION2421	E2608	JAY ION 24" X 21"	\$495
<input type="checkbox"/>	JION1915	E2607	JAY ION 19" X 15"	\$395	<input type="checkbox"/>	JION2422	E2608	JAY ION 24" X 22"	\$495
<input type="checkbox"/>	JION1916	E2607	JAY ION 19" X 16"	\$395	<input type="checkbox"/>	JION2423	E2608	JAY ION 24" X 23"	\$495
<input type="checkbox"/>	JION1917	E2607	JAY ION 19" X 17"	\$395	<input type="checkbox"/>	JION2424	E2608	JAY ION 24" X 24"	\$495

JAY Your Way - Modifications

✓	Option Code	HCPCS	Definition	Price
NOTCH FOR SEAT RAILS				
<input type="checkbox"/>	NR		Notch for Seat Rails	NC
NOTCH FOR BACK POST				
<input type="checkbox"/>	NP		Notch for Back Post	NC
Specify distance from back of cushion:				
	<input type="checkbox"/>	1"	<input type="checkbox"/>	2"
			<input type="checkbox"/>	3"
COVER OPTIONS				
<input type="checkbox"/>	CVR		Cover Options	NC
	<input type="checkbox"/>	Stretch	<input type="checkbox"/>	Incontinent
			<input type="checkbox"/>	Microclimatic

✓	Option Code	HCPCS	Definition	Price	
ANTERIOR OR POSTERIOR SLOPE					
<input type="checkbox"/>	WGP		Posterior Slope - Wedge	NC	
Wedge glued underneath cushion (Cover sewn to match)					
Select desired height increase at front of cushion					
		<input type="checkbox"/>	.5"	<input type="checkbox"/>	1"
				<input type="checkbox"/>	1.5"
<input type="checkbox"/>	WGA		Anterior Slope - Wedge	NC	
Wedge glued underneath cushion (Cover sewn to match)					
Select desired height increase at rear of cushion					
		<input type="checkbox"/>	.5"	<input type="checkbox"/>	1"
				<input type="checkbox"/>	1.5"

CUSTOM EMBROIDERY				
<input type="checkbox"/>	EMBROIDERY	K0108	Embroidery (32 Character Max)	\$22.00
Location: <input type="checkbox"/> Front <input type="checkbox"/> Side				
Font: <input type="checkbox"/> Block <input type="checkbox"/> Script				

Embroidery Text:

Don't see the option you want? NO PROBLEM! Write your request below and we can evaluate it and provide a quote.

Notes:

