

ASSEMBLY

1. See fixture instruction sheet for disassembly of pendant before installing glass.
2. Determine what part bag you are using.

PART BAGS

Part Bag A- Figure 1

☒ (Socket Locator) △ (Glass Supporter)

Part Bag B- Figure 2

■ (Socket Locator) ⊙ (Retaining Ring) ☒ (Installed Spider)

Part Bag C- Figure 3

■ (Socket Locator) ⊙ (Retaining Ring)

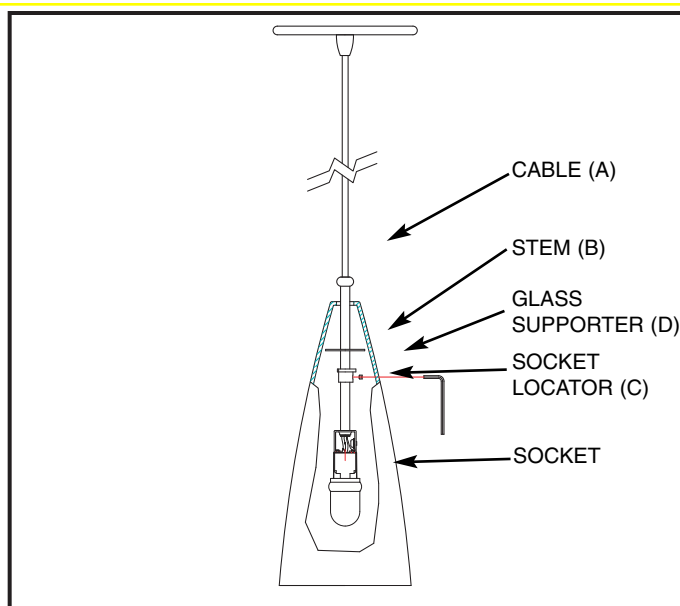
Part Bag D- Figure 4

■ (Socket Locator) ⊙ (Retaining Ring) ☒ (Spider)

Part Bag E- Figure 5

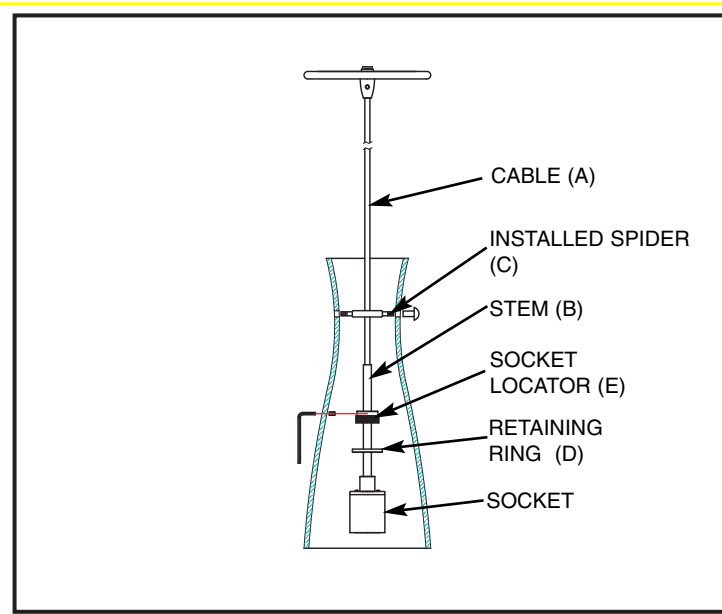
☒ (Glass Supporter)

FIGURE 1



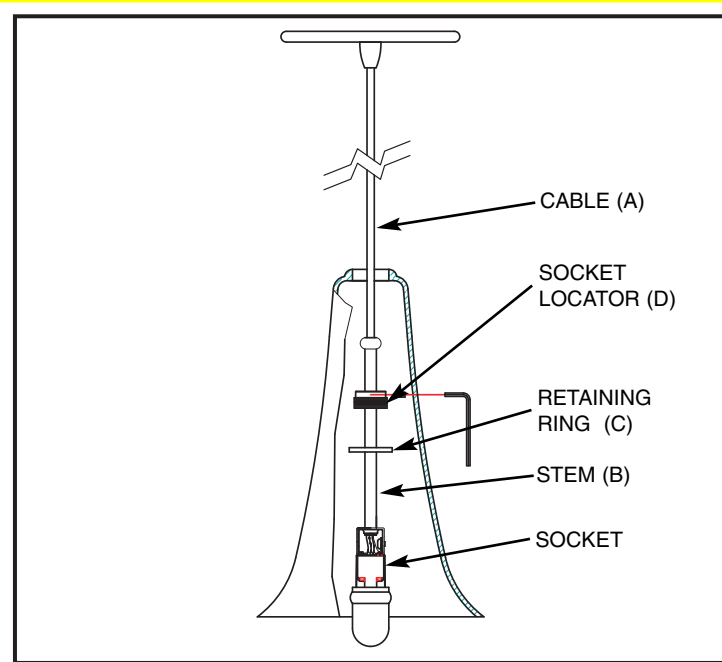
1. Slide socket locator onto stem (B) from cable (A).
2. Secure the socket locator (C) with the allen wrench to the desired length on the stem (B).
3. Slide on the glass supporter (D) onto the stem (B) above the socket locator (C).
4. Pull cable (A) from bottom of glass through top opening of glass.

FIGURE 2



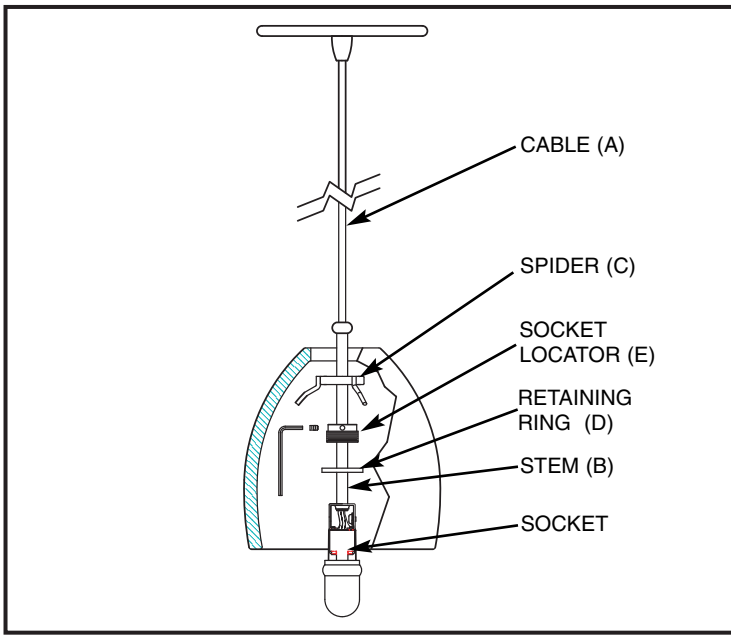
1. Remove retaining ring (D) from socket locator (E) and set aside.
2. Slide socket locator (E) onto stem (B).
3. Secure the socket locator (E) with the allen wrench to the desired length on the stem (B).
4. Secure the threaded ring (D) to the socket locator (E).
5. Pull cable (A) from bottom of glass through installed spider (C) in glass.
6. Thread the socket locator (E) to the installed spider (C).

FIGURE 3



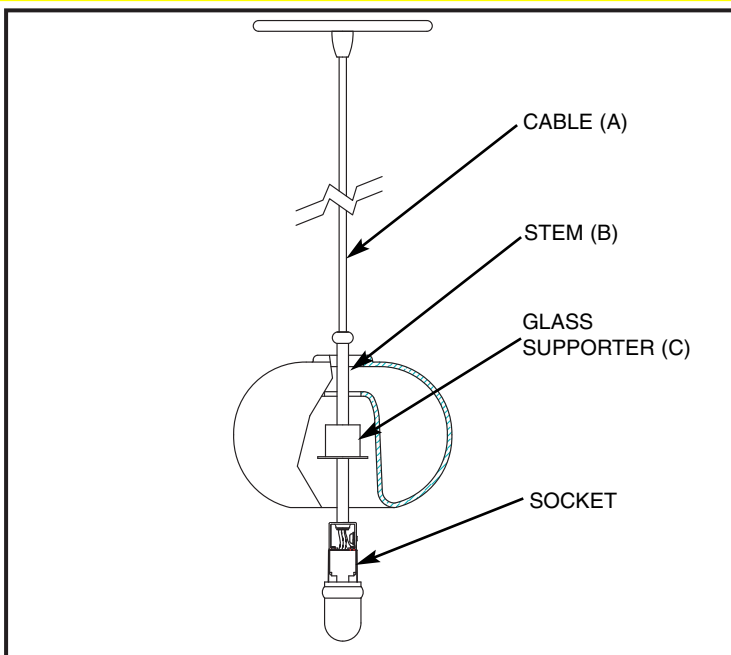
1. Remove retaining ring (C) from socket locator and set aside.
2. Slide socket locator (D) onto stem (B). Secure the socket locator (D).
3. Secure the threaded ring (C) to the socket locator (D).
4. Pull cable (A) from bottom of glass through top opening in glass.

FIGURE 4



1. Remove retaining ring (D) from locator (E) and set aside.
2. Slide the socket locator onto stem (B). Secure the socket locator (E) with the allen wrench to the desired length on the stem (B).
3. Secure the threaded ring (D) to the socket locator (E).
4. Slide spider (C) onto stem (B) and fit on top of retaining ring (D).
5. Pull cable (A) from bottom of glass through top opening in glass.

FIGURE 5



1. Slide glass supporter (C) through cable (A) and onto stem (B).
2. Pull cable (A) through bottom of glass to the opening of the glass.

FINAL ASSEMBLY

1. Reassemble pendant according to pendant instructions.