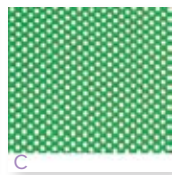
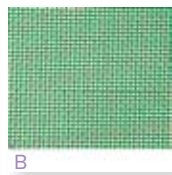




HCPCS
E1399



Otter Bathing System

Item #	Product Size	Product Seat Depth	Product Back Height	Product Outside Overall Length	Product User Height	Product Weight	Product Weight Capacity	Product Carton Shipping Weight	UOM
OT 1000	Small	13"	18"	36.5"	Up to 36"	11 lbs.	60 lbs.	14 lbs.	1/bx
OT 2000	Medium	13"	25"	42"	32"- 50"	12 lbs.	120 lbs.	15 lbs.	1/bx
OT 3000	Large	16.5"	32"	50"	46"- 68"	14 lbs.	160 lbs.	18 lbs.	1/bx
OT 1000 SF	Small	13"	18"	36.5"	Up to 36"	11 lbs.	60 lbs.	14 lbs.	1/bx
OT 2000 SF	Medium	13"	25"	42"	32"- 50"	12 lbs.	120 lbs.	15 lbs.	1/bx
OT 3000 SF	Large	16.5"	32"	50"	46"- 68"	14 lbs.	160 lbs.	18 lbs.	1/bx

- Plastic frame with a choice of standard (Figure B) or soft (Figure C) removable and washable fabric.
- Standard Fabric: Vinyl covered nylon dries easily. (Figure B)
- Soft Fabric: Polyester knit fabric includes a trunk strap to assist in lateral support. Features additional padding between the fabric and Otter frame. (Figure C)
- Angle-adjustable seat and back have five angle adjustments at 0°, 22.5°, 45°, 67.5° and 90°.
- Seat and back Uni-Bars provide one-handed angle adjustments. (Figure A)
- Adjustments can be made with user seated in chair.
- Height- and width-adjustable head cushions offer support and comfort. They can also be used as lateral supports.
- Removable positioning straps can be placed anywhere along the length of the frame.
- Leg straps control abduction and adduction.
- Adjustable slip-resistant legs raise chair up to 7".
- Folds flat for easy storage.

specifications

Seat Dimensions	14.5" (W) x 2"- 7" (H)
Overall Outside Width	17"
Warranty	Limited Lifetime