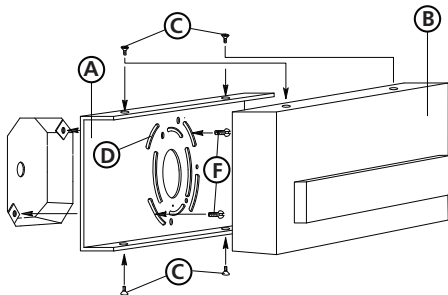


## ▼ start here

### Drawing 1 - Fixture Mounting



1

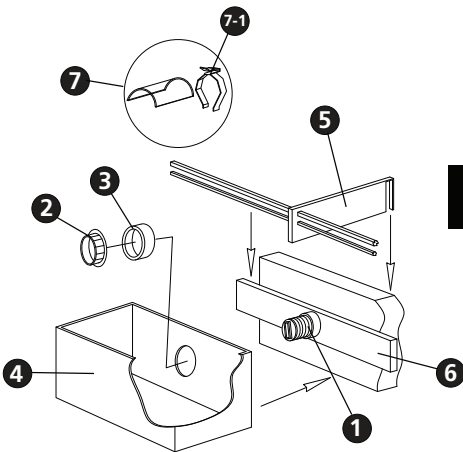
2. Unpack fixture and glass from carton.
3. Carefully review instructions prior to assembly.

**\*\*\* The construction of this fixture will be accomplished by first mounting the mounting strap to the junction box, making all necessary electrical connections, assembling the main body of the fixture, mounting the fixture to the wall, and then installing the glass.**

2

1. Remove main mounting plate (A) from fixture back plate (B) by removing the four flat head screws (C) - see **Drawing 1**.
2. Slide the wires from the junction box, through the large center hole, making sure curved slots (D) line up with the threaded holes (E) in the junction box.
3. Using two 8-32 screws (F) attach the main mounting plate (A) to the junction box, making sure side of mounting plate (A) is square to ceiling.

### Drawing 2 - Fixture Assembly



4

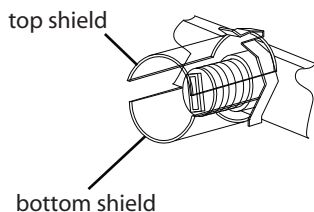
**SAFETY WARNING: READ WIRING AND GROUNDING INSTRUCTIONS (I.S. 18) AND ANY ADDITIONAL DIRECTIONS. TURN POWER SUPPLY OFF DURING INSTALLATION. IF NEW WIRING IS REQUIRED, CONSULT A QUALIFIED ELECTRICIAN OR LOCAL AUTHORITIES FOR CODE REQUIREMENTS.**

Make electrical connections from supply wire to fixture lead wires. Refer to instruction sheet (I.S. 18) and follow all instructions to make all necessary wiring connections. Then refer back to this sheet to continue installation of this fixture.

5

1. Mount the fixture by sliding the back plate (B) over mounting plate (A) - see **Drawing 1**.
2. Attach the back plate (B) to the mounting plate (A) using the screws (C).

### bulb shield detail drawing



1. To install glass remove socket ring (2) and spacer (3) from socket (1).
2. Slip hole in back of glass (4) over socket (1) followed by spacer (3).
3. Thread socket ring (2) onto socket (1) and tight to secure glass (4) making sure glass is level.
4. Fixture can now be lamped accordingly. After lamping make sure to clip bulb shield (7) onto the bottom of the socket (1) and then use one finger push the raised point of the second metal clip (7-1), and then spread the outside of the clip outward so it would fit over the bottom clip, then slide the clip on and over the bottom clip.
5. Decorative grill (5) tabs can be slip over crossbar (6) and centered. Fixture is complete. Note: there are locator tabs on the back of crossbar (6) to help locate grill in the center of the crossbar.