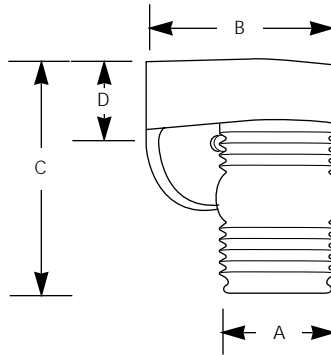


Type \_\_\_\_\_  
 -30 -31  
 P5612

Catalog No.	Finish		Lamping	Dimensions (Inches)			
	White	Black		A	B	C	D
P5612	-30	-31	1-60w A19	4-3/4	5-3/4	7-1/4	2-1/2



**Specifications:**

General

- Wall mounted
- White or Black finish
- Polycarbonate construction
- Clear lexan (polycarbonate) UV stabilized diffuser
- Lamp replacement - Diffuser unscrews

Electrical

- Medium based socket is phenolic with brass screw shell

Labeling

- UL-CUL wet location listed

Mounting

- Wall mounted
- Covers standard junction box
- Mounting strap for outlet box cap nut provided
- Back plate - 4-3/8" W., 4-3/4" ht.