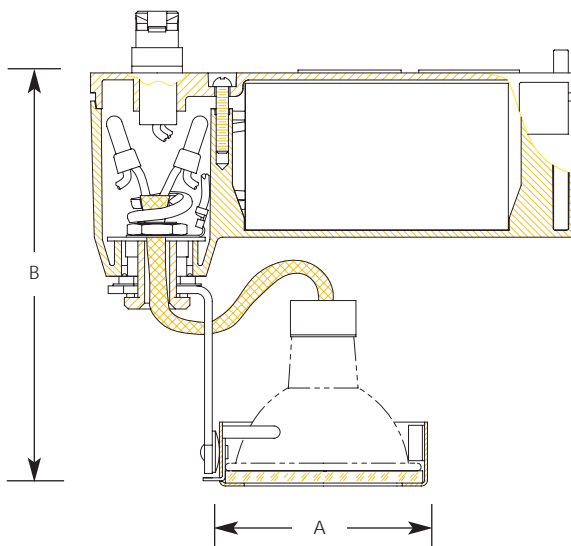


Type _____
 -09 -28 -31
 P6339

| Catalog No. | Finish | | | Lamping | Dimensions (Inches) | |
|-------------|----------------|-------|-------|-------------|---------------------|-------|
| | Brushed Nickel | White | Black | | A | B |
| P6339 | -09 | -28 | -31 | 12v-50wMR16 | 2-1/8 | 4-7/8 |



Specifications:

Track Lock Up & Transformerhousing

- For use with Alpha (P9100 Series) track
- Cast aluminum housing
- Polarity oriented
- Quarter turn fastening to track
- Locks to track to prevent accidental removal

Track Head

- Half yoke attaches to gimbel ring
- Permanently wired and affixed to the transformer housing
- 358 degree rotation
- 0 to 90 degree vertical swing
- Steel construction
- Clear lens protects lamp
- GU5.3 bi pin lamp base

Transformer

- 120v to 12v electronic transformer
- Transformer is potted for minimum noise, low heat and protection of components

Labeling

- UL-CUL dry location listing

Photometrics

- Refer to MR16 lamp application data