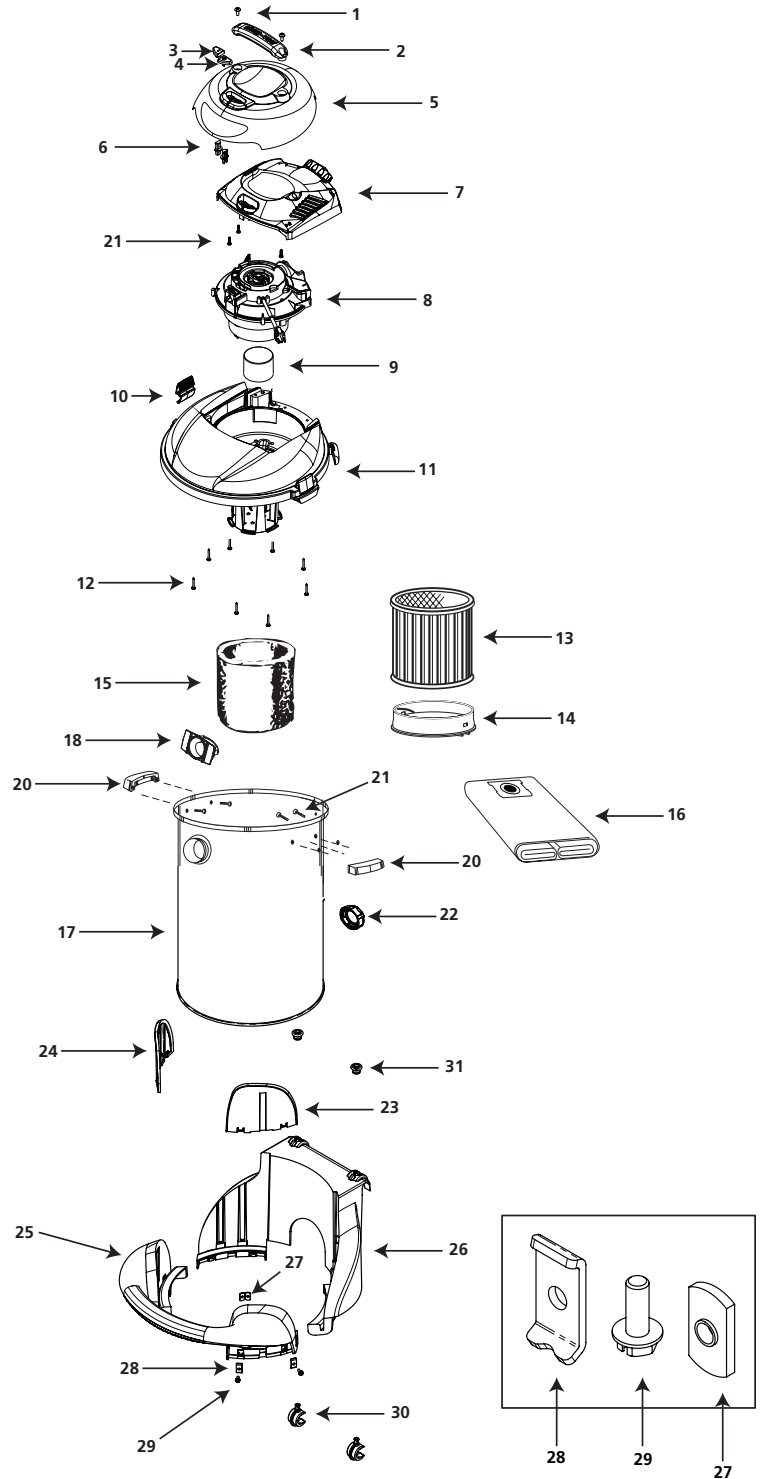


Model 92L2S250



ITEM	DESCRIPTION	PART NO.
1	Screw ¼" x 1.5" Trilobe PH PAN	1517499
2	Handle	1944475
3	Switch Button - I	7414200
4	Switch Button - O	7414210
5	Outer Motor Cover Assembly	1944137
6	Switch Button Extension	7414250
7	Inner Motor Cover	3748921
8	Power Unit Assembly	1945008
9	Float	3545000
10	Lid Latch	7444500
11	Lid Cage and Latch Assembly	1945009
12	Screw 10 x ¾" Trilobe, Twin Lead	1517699
13	Cartridge Filter	9039010
14	Filter Retainer	3008000
15	Foam Sleeve	90585
16	High Efficiency Collection Bag	9190710
17	Tank Assembly	1096397
18	Inlet Deflector	7413120
19	Handle and Hardware package (Includes 20-21)	9355196
20	Side Tank Handles	9355100
21	Screw #10 x ¾" Hex Head	1503999
22	Drain Cover	7446800
23	Spacer A	7432500
24	Spacer B	7432510
25	Tank Handle	7432200
26	Pivot Adapter	7432400
27	Weld Nut	5000499
28	Tank Clip	2089000
29	Screw 10-24 x ½" Lg. Mach.	0907199
30	Pivot Clasp	7432600
31	Knob	7432700

* Replacement parts may differ from original equipment.





ITEM	DESCRIPTION	PART NO.
32	Cap nut	4300299
33	Axle	2442600
34	Wheel 10"	2420700
35	Dolly	7432001
36	Caster	6772900
37	Handle Upright	2088800
38	Handle Top	2088900
39	Screw 1/4 x 3/4" Long Phillips (Truss)	1514699
40	Pivot Tube	2088700
41	Screw #10 x 1 1/2" AB Type	1504199
42	Accessory Basket	7432800
43	Break Lever	7432900
44	Cross Dowel Nut	7433000
45	Break Clamp	7432050
46	Compression Spring	2803099
47	1/4"-20 Hex Nut	1300199
48	1/4"-20 x 2.5" lg Hex Hd. Mach. Screw	0907599
49	Flat Washer	0700399

