

Strong core tube with laser welded segments for demanding applications.



Tapered turbo type segment for fast penetration.



Large segment heights for extended life.

## X-Bit Drill Bit Series

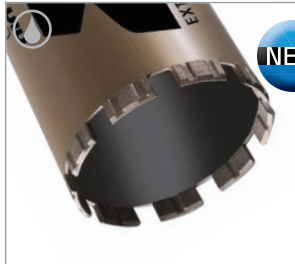
The X3 and X5 premium core bit range was created for extreme drilling performance. This new and innovative design features a laser welded segment for superior performance. A tapered top permits quick and efficient penetration into the toughest aggregates or steel-reinforced concrete. Strategically placed flutes on the segment reduce friction and accelerate cutting performance by flushing out debris from the contact surface, extending the overall life of the X-Bit series. The X5 has a harder bond configuration designed to cut through more abrasive materials while X3 is ideal for critically hard materials.



## Reinforced Concrete and Harder Building Materials

Concrete, reinforced concrete.

### WET



#### X3



Unique segment geometry provides quicker penetration with exceptional cutting speed in critically hard materials using standard speed, core drill equipment.

UPC	PART #	SIZE IN INCHES	SIZE IN MM	MAX RPM	SEGMENT HEIGHT
701846 <b>42289</b>	5 X3 2" Laser Welded, 18" Tube	2"	51mm	2000	.393"
701846 <b>42290</b>	1 X3 2-1/2" Laser Welded, 18" Tube	2-1/2"	64mm	1300	.393"
701846 <b>42291</b>	8 X3 3" Laser Welded, 18" Tube	3"	76mm	1300	.393"
701846 <b>42292</b>	5 X3 3-1/2" Laser Welded, 18" Tube	3-1/2"	89mm	1300	.393"
701846 <b>42293</b>	2 X3 4" Laser Welded, 18" Tube	4"	102mm	1000	.393"
701846 <b>42294</b>	9 X3 4-1/2" Laser Welded, 18" Tube	4-1/2"	114mm	800	.393"
701846 <b>42295</b>	6 X3 5" Laser Welded, 18" Tube	5"	127mm	800	.393"
701846 <b>42296</b>	3 X3 6" Laser Welded, 18" Tube	6"	152mm	665	.393"
701846 <b>42297</b>	0 X3 7" Laser Welded, 18" Tube	7"	178mm	600	.393"
701846 <b>42298</b>	7 X3 8" Laser Welded, 18" Tube	8"	203mm	500	.393"



### CHARGER



Laser welded segments for faster penetration in medium aggregate with reinforcement and maximum utilization of segment life.

UPC	PART #	SIZE IN INCHES	SIZE IN MM	MAX RPM	SEGMENT SPEC
701846 <b>82778</b>	2 CGBIT0100	1"	25mm	4,000	.315"
701846 <b>82779</b>	9 CGBIT0125	1-1/4"	32mm	3,000	.315"
701846 <b>82780</b>	5 CGBIT0150	1-1/2"	38mm	3,000	.315"
701846 <b>82781</b>	2 CGBIT0175	1-3/4"	44mm	2,000	.315"
701846 <b>82782</b>	9 CGBIT0200	2"	51mm	2,000	.315"
701846 <b>82783</b>	6 CGBIT0225	2-1/4"	57mm	1,300	.315"
701846 <b>82784</b>	3 CGBIT0250	2-1/2"	64mm	1,300	.315"
701846 <b>82785</b>	0 CGBIT0300	3"	76mm	1,300	.315"
701846 <b>82786</b>	7 CGBIT0350	3-1/2"	89mm	1,000	.315"
701846 <b>82787</b>	4 CGBIT0400	4"	102mm	1,000	.315"
701846 <b>82788</b>	1 CGBIT0425	4-1/4"	108mm	800	.315"
701846 <b>82789</b>	8 CGBIT0450	4-1/2"	114mm	800	.315"
701846 <b>82790</b>	4 CGBIT0500	5"	127mm	800	.315"
701846 <b>82791</b>	1 CGBIT0600	6"	152mm	665	.315"
701846 <b>82792</b>	8 CGBIT0700	7"	178mm	600	.315"
701846 <b>82793</b>	5 CGBIT0800	8"	203mm	500	.315"
701846 <b>82794</b>	2 CGBIT1000	10"	254mm	400	.315"
701846 <b>82795</b>	9 CGBIT1200	12"	305mm	330	.315"
701846 <b>82796</b>	6 CGBIT1400	14"	356mm	285	.315"



## Reinforced Concrete and Harder Building Materials

Concrete, reinforced concrete.

### WET

#### NORTON CLASSIC



Economical choice for use in harder concrete with heavy reinforcement and masonry materials with good performance.



UPC	PART #	SIZE IN INCHES	SIZE IN MM	MAX RPM	SEGMENT HEIGHT
701846 84447	5 CHBIT0100	1", 16" Tube	25mm	4,000	.254"
701846 84448	2 CHBIT0150	1-1/2", 16" Tube	38mm	3,000	.254"
701846 82762	1 CHBIT0200	2", 16" Tube	51mm	2,000	.254"
701846 82763	8 CHBIT0225	2-1/4", 16" Tube	57mm	2,000	.254"
701846 82764	5 CHBIT0250	2-1/2", 16" Tube	64mm	1,300	.254"
701846 82765	2 CHBIT0300	3", 16" Tube	76mm	1,300	.254"
701846 82766	9 CHBIT0350	3-1/2", 16" Tube	89mm	1,300	.254"
701846 82767	6 CHBIT0400	4", 16" Tube	102mm	1,000	.254"
701846 82768	3 CHBIT0425	4-1/4", 16" Tube	108mm	1,000	.254"
701846 82769	0 CHBIT0450	4-1/2", 16" Tube	114mm	800	.254"
701846 82770	6 CHBIT0500	5", 16" Tube	127mm	800	.254"
701846 82771	3 CHBIT0600	6", 16" Tube	152mm	665	.254"
701846 82772	0 CHBIT0700	7", 16" Tube	178mm	600	.254"
701846 82773	7 CHBIT0800	8", 16" Tube	203mm	500	.254"
701846 82774	4 CHBIT1000	10", 16" Tube	254mm	400	.254"
701846 82775	1 CHBIT1200	12", 16" Tube	305mm	330	.254"
701846 82776	8 CHBIT1400	14", 16" Tube	356mm	285	.254"

### PRESTRESSED CONCRETE

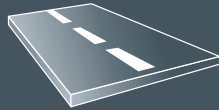
#### CHARGER



Fast drilling segments spaced to prevent segment loss when penetrating tensioned steel cable.



UPC	PART #	SIZE IN INCHES	SIZE IN MM	MAX RPM	SEGMENT HEIGHT
701846 83983	9 CGPBIT0100	1", 16" Tube	25mm	4,000	.315"
701846 83984	6 CGPBIT0125	1-1/4", 16" Tube	32mm	3,000	.315"
701846 83985	3 CGPBIT0150	1-1/2", 16" Tube	38mm	3,000	.315"
701846 83986	0 CGPBIT0175	1-3/4", 16" Tube	44mm	2,000	.315"
701846 83987	7 CGPBIT0200	2", 16" Tube	51mm	2,000	.315"
701846 83988	4 CGPBIT0225	2-1/4", 16" Tube	57mm	1,300	.315"
701846 83989	1 CGPBIT0250	2-1/2", 16" Tube	64mm	1,300	.315"
701846 83990	7 CGPBIT0300	3", 16" Tube	76mm	1,300	.315"
701846 83991	4 CGPBIT0350	3-1/2", 16" Tube	89mm	1,000	.315"
701846 83992	1 CGPBIT0400	4", 16" Tube	102mm	1,000	.315"
701846 83993	8 CGPBIT0425	4-1/4", 16" Tube	108mm	800	.315"
701846 83994	5 CGPBIT0450	4-1/2", 16" Tube	114mm	800	.315"
701846 83995	2 CGPBIT0500	5", 16" Tube	127mm	800	.315"
701846 83996	9 CGPBIT0600	6", 16" Tube	152mm	665	.315"
701846 83997	6 CGPBIT0700	7", 16" Tube	178mm	600	.315"
701846 83998	3 CGPBIT0800	8", 16" Tube	203mm	500	.315"
701846 83999	0 CGPBIT1000	10", 16" Tube	254mm	400	.315"
701846 84000	2 CGPBIT1200	12", 16" Tube	305mm	330	.315"
701846 84001	9 CGPBIT1400	14", 16" Tube	356mm	285	.315"



## Asphalt and Abrasive Materials

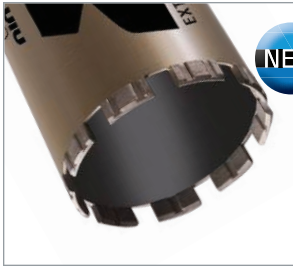
Asphalt, green concrete, asphalt over concrete, abrasive blocks, mortar and other abrasive materials.

### WET

#### X5



The special bond and diamond concentration provide increased speed and easily cuts through asphalt, abrasive blocks or concrete and even overlay. The long 18" tube and fluted segments allow for cooler, deeper penetration, while the tapered tops make starting the hole faster and easier.



UPC	PART #	SIZE IN INCHES	SIZE IN MM	MAX RPM	SEGMENT HEIGHT
701846 42299	4 X5 2" Laser Welded, 18" Tube	2"	51mm	2000	.393"
701846 42300	7 X5 2-1/2" Laser Welded, 18" Tube	2-1/2"	64mm	1300	.393"
701846 42301	4 X5 3" Laser Welded, 18" Tube	3"	76mm	1300	.393"
701846 42302	1 X5 3-1/2" Laser Welded, 18" Tube	3-1/2"	89mm	1300	.393"
701846 42303	8 X5 4" Laser Welded, 18" Tube	4"	102mm	1000	.393"
701846 42304	5 X5 4-1/2" Laser Welded, 18" Tube	4-1/2"	114mm	800	.393"
701846 42305	2 X5 5" Laser Welded, 18" Tube	5"	127mm	800	.393"
701846 42306	9 X5 6" Laser Welded, 18" Tube	6"	152mm	665	.393"
701846 42307	6 X5 7" Laser Welded, 18" Tube	7"	178mm	600	.393"
701846 42308	3 X5 8" Laser Welded, 18" Tube	8"	203mm	500	.393"

### WET

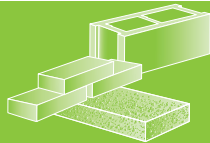
#### CHARGER



Long life bit segments for drilling abrasive materials. Excellent drilling speed and life in asphalt and other abrasive materials



UPC	PART #	SIZE IN INCHES	SIZE IN MM	MAX RPM	SEGMENT HEIGHT
701846 84149	8 CGABIT0200	2", 16" Tube	51mm	2,000	.315"
701846 84150	4 CGABIT0300	3", 16" Tube	76mm	1,300	.315"
701846 84151	1 CGABIT0400	4", 16" Tube	102mm	1,000	.315"
701846 84152	8 CGABIT0500	5", 16" Tube	127mm	800	.315"
701846 84153	5 CGABIT0600	6", 16" Tube	152mm	665	.315"



## General Purpose and Masonry Building Materials

Blocks, medium-hard building bricks, paving slabs, concrete roof files and other medium hard materials.

DRY



### CHARGER



Dry drilling core bits for use on portable drilling equipment. Best suited for applications in soft, non-reinforced cured concrete and concrete block.



UPC	PART #	SIZE IN INCHES	SIZE IN MM	MAX RPM	SEGMENT HEIGHT
701846 83300	4 CGDBIT0100	1", 16" Tube	25mm	4,000	.276"
701846 83301	1 CGDBIT0125	1-1/4", 16" Tube	32mm	3,000	.276"
701846 83302	8 CGDBIT0150	1-1/2", 16" Tube	38mm	3,000	.276"
701846 83303	5 CGDBIT0175	1-3/4", 16" Tube	44mm	2,000	.276"
701846 83304	2 CGDBIT0200	2", 16" Tube	51mm	2,000	.276"
701846 83305	9 CGDBIT0250	2-1/2", 16" Tube	64mm	1,300	.276"
701846 83306	6 CGDBIT0300	3", 16" Tube	76mm	1,300	.276"
701846 83307	3 CGDBIT0350	3-1/2", 16" Tube	89mm	1,000	.276"
701846 83308	0 CGDBIT0400	4", 16" Tube	102mm	1,000	.276"
701846 83309	7 CGDBIT0450	4-1/2", 16" Tube	114mm	1,000	.276"
701846 83310	3 CGDBIT0500	5", 16" Tube	127mm	800	.276"
701846 83311	0 CGDBIT0600	6", 16" Tube	152mm	665	.276"

## ACCESSORIES FOR CORE DRILLING

### ACCESSORIES

UPC	PART #	DESCRIPTION	SIZE
701846 69858	0 Y1017	Nylon Washer	
701846 65995	6 402760	Extension	6" x 1-1/4" 7 Thread
701846 48793	1 402758	Extension	6" x 5/8" 11 Thread
701846 48791	7 402756	Extension	12" x 1-1/4" 7 Thread
701846 48792	4 402757	Extension	12" x 5/8" 11 Thread
701846 49430	4 400148	Coupling	1-1/4" – 7(F) – 5/8" – 11(M)
701846 49797	8 400147	Coupling	5/8" – 11(F) – 1 1/4" – 7(M)
701846 83078	2 4913	Drill Chuck Adapter	5/8" 11 thread to straight 1/2" shank

#### NOTE:

- BITS FROM 1" TO 1-1/2" DIAMETER HAVE 5/8"- 11 THREADS ADAPTERS.
- BITS 1-3/4" DIAMETER AND LARGER HAVE 1-1/4" – 7 THREADS ADAPTERS.
- ALL BITS STANDARD BITS ARE 16" LONG TO PRODUCE A 13" CORE.
- ALL DRY BITS COME WITH 5/8"-11" THREAD ADAPTERS.





# THE X-BIT CORE BIT SERIES FOR EXTREME DRILLING PERFORMANCE

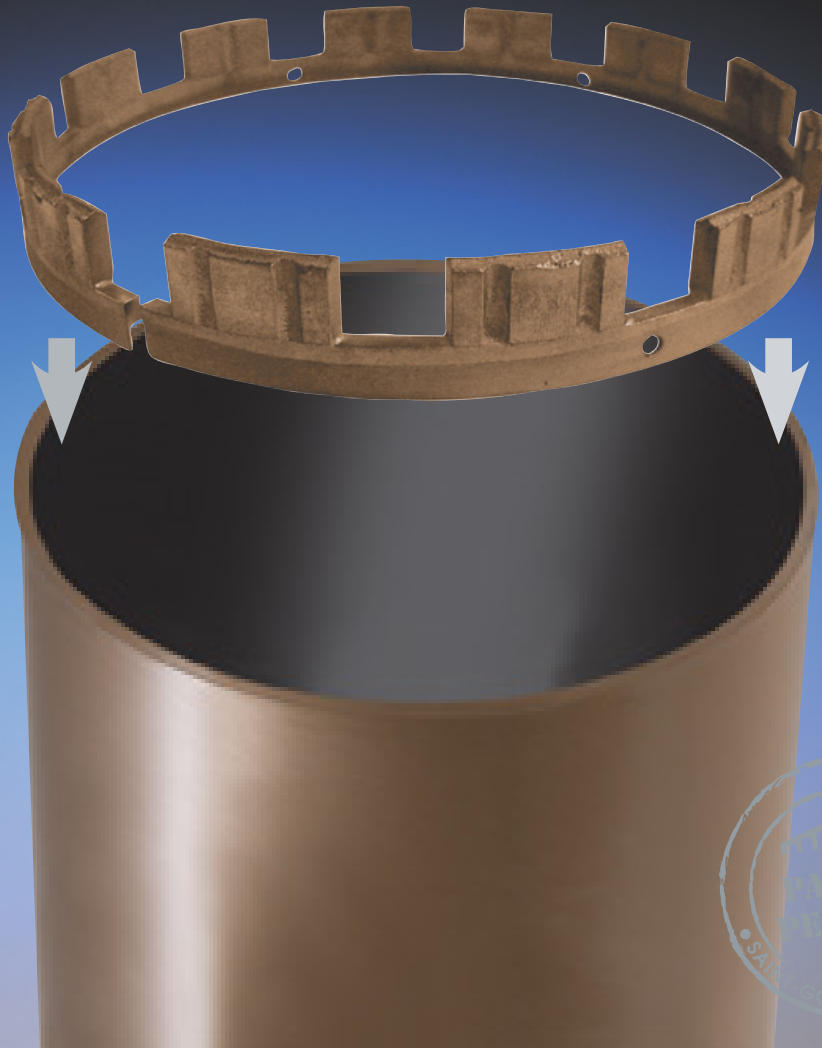


The X3 and X5 premium core bit range was created for extreme drilling performance. This new and innovative design features a laser welded segment for superior performance. Having a tapered top permits the core bit quick and efficient penetration into the toughest aggregates or steel reinforced concrete. Strategically placed flutes on the segment reduce friction and accelerate cutting performance by flushing debris from the contact surface and out, extending the overall life of the X-Bit series. The X5 has a harder bond configuration designed to cut through more abrasive materials than the X3.

**X3**  
EXTREME DRILLING PERFORMANCE

**X5**  
EXTREME DRILLING PERFORMANCE





Adjustable ring allows fitting of tube variances.



Solder capillaries improve attachment.



Full kit for simplification.

## O'Tip Core Bit Re-Tipping

It is easy, efficient and cost effective. The revolutionary process of the O'Tip is the next evolution to re-tipping core bits. No more sending core tubes to an outside vendor. Now you can do it yourself and save on shipping costs and potential return delays. And, reduced tube inventory translates to less space needed to transport bits to the jobsite, as well as individual bit stock. The O'Tip provides excellent segment positioning, strength and performance for cost savings never achieved previously.

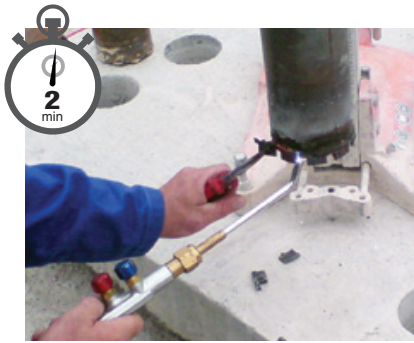




O'Tipping is easy and can be performed right on the job site saving time, money and labor. With this innovative product, there are less tubes needed in inventory. Tubes are not cut when O'Tipping, extending the life of the tube. Cost savings are found in many areas from; less bit inventory, time in sending out tubes to be re-tipped, and inconsistent segment tipping. You control the quality and ensure better performance for ongoing productivity and best results.

**STEP ONE**

Leaving the bit mounted, apply heat over a small section of the worn O'Tip. Pull with pliers to quickly remove O'Tip in small pieces.



**STEP TWO**

Clean the tube with an angle grinder, apply brazing flux.



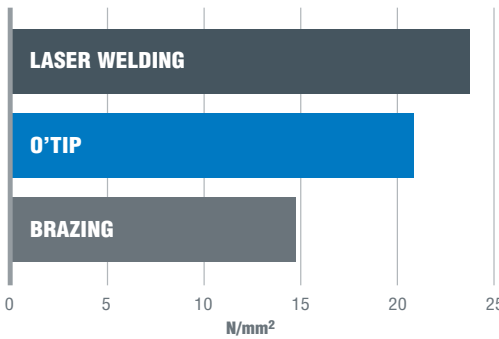
**STEP THREE**

Dismount the tube and place it vertically on the new O'Tip. Apply heat to the steel ring, over a 3" section surrounding the capillary holes. Place the brazing rod through the capillary holes, silver solder will spread by capillary effect. Start with the cut section of the steel ring, and repeat for each hole.

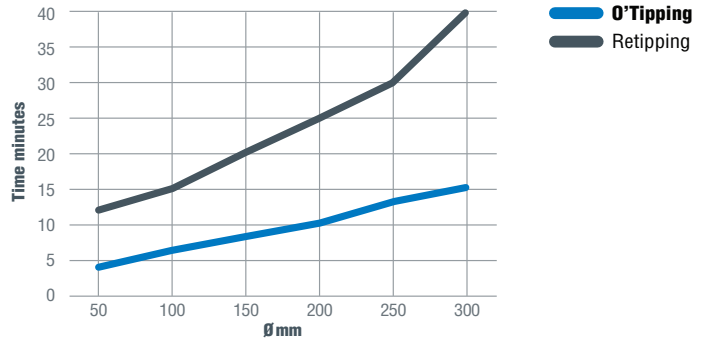


**ALWAYS FOLLOW SAFE OPERATING PROCEDURES**

Segment torque resistance to breakage in N/mm<sup>2</sup>



Time saving between re-tipping and O'Tipping



O'TIP			
UPC		DESCRIPTION	QTY
701846	43157	6 O'Tip 2 inch	1
701846	43158	3 O'Tip 3 inch	1
701846	43159	0 O'Tip 4 inch	1
701846	43160	6 O'Tip 5 inch	1
701846	43161	3 O'Tip 6 inch	1

O'TIP KIT			
UPC		DESCRIPTION	QTY
701846	43162	0 O'Tip 2 inch kit	3
701846	43163	7 O'Tip 3 inch kit	3
701846	43164	4 O'Tip 4 inch kit	3
701846	43165	1 O'Tip 5 inch kit	3
701846	43166	8 O'Tip 6 inch kit	3

