

Model: CB3023

Drain Installation Guide

For Sinks with overflow above counter

Step 1

Position countertop opening to ensure clearance between the lavatory, faucet and backsplash.

Cut 6-11/16" hole in countertop

See Figure 1.

Step 2

Apply a continuous bead of silicon sealant (Not Provided) around the edge of the countertop cutout. Position the lavatory on the countertop. Press down firmly on the lavatory. Apply a thin bead of silicone sealant (Not Provided) where the lavatory meets the countertop.

See Figure 2.

Step 3

If using RONBOW drain, place a generous portion of plumbers' putty (Not Provided) under drain cap and insert whole drain body inside the bowl and through the countertop.

*There may be a small beveled rubber washer packaged with your drain, please discard this and use plumbers' putty instead.

See Figure 3.

Step 4

From under the drain, insert the thick rubber washer and screw on and tighten the metal nut. Remove excess plumbers' putty.

See Figure 3.

Step 5

Connect the trap to the drain. Run water into the lavatory. Check all connections for leaks.

Figure 1.

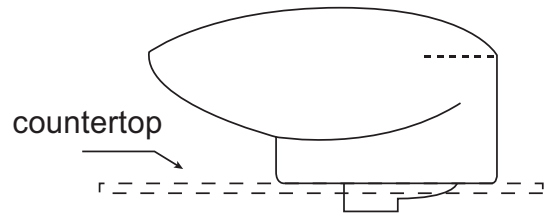


Figure 2.

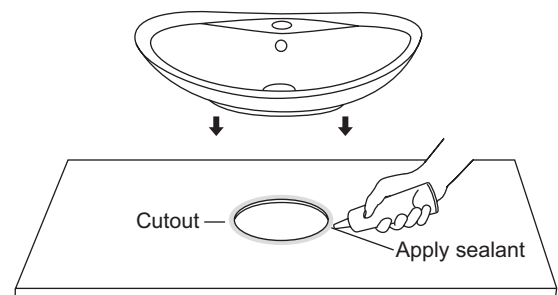


Figure 3.

