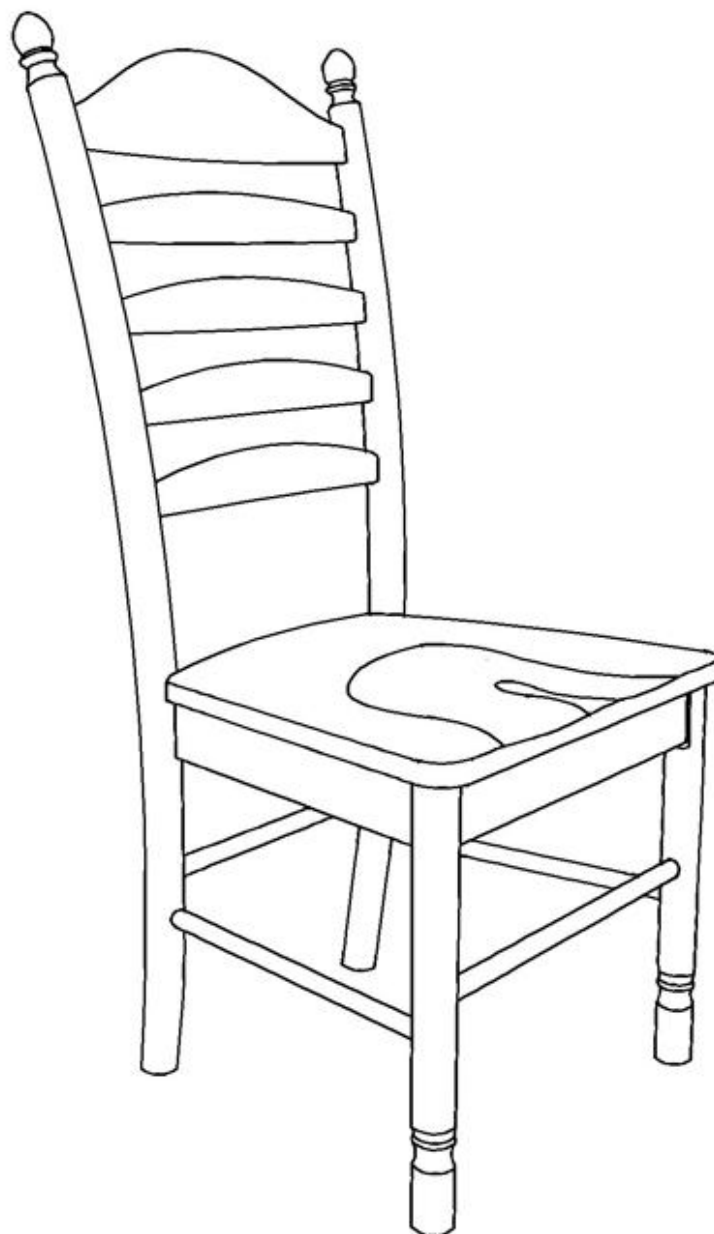


# ASSEMBLY INSTRUCTIONS

---



---

Description : BEDFORD LADDERBACK CHAIR  
Item No. : C-271

ITEM NO.: C-271  
REVISED JUL 6, 2012

Printed in Vietnam

## BEFORE ASSEMBLY

Thank you for purchasing this quality product. This product has been designed for easy assembly and constructed for durability. All parts were checked prior to packaging to insure quality. Prior to beginning assembly, however, make sure all parts and hardware are included and free of obvious defect. If a part is missing or defective, please contact the store where purchased. If hardware is missing, or you need help with assembly, please call toll free 888-944-8396.

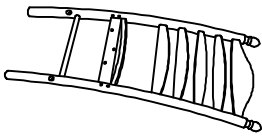
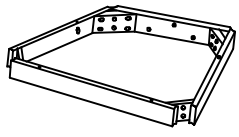
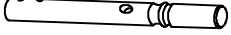



**IMPORTANT NOTE:**

- Place all wooden parts on a clean and smooth surface such as a rug or carpet to avoid the parts from being scratched.
- Remove all wrapping material, including staples & packing straps before you start to assemble.
- DO NOT tighten all screws and bolts until completely assembled.
- Keep all hardware parts out of reach of children.



## PART LIST

When unpacking, please be careful not to discard any parts with the packaging. Before continuing, please make sure you have the following parts:

NO	Description	Qty	Sketch	NO	Description	Qty	Sketch
A	Back	1		B	Seat Frame	1	
C	Front Leg (L-R)	2		D	Front Stretcher	1	
E	Side Stretcher	2		F	Seat	1	

## HARDWARE LIST

**ITEM NO.: C-271**  
**REVISED JUL 6, 2012**

**Printed in Vietnam**

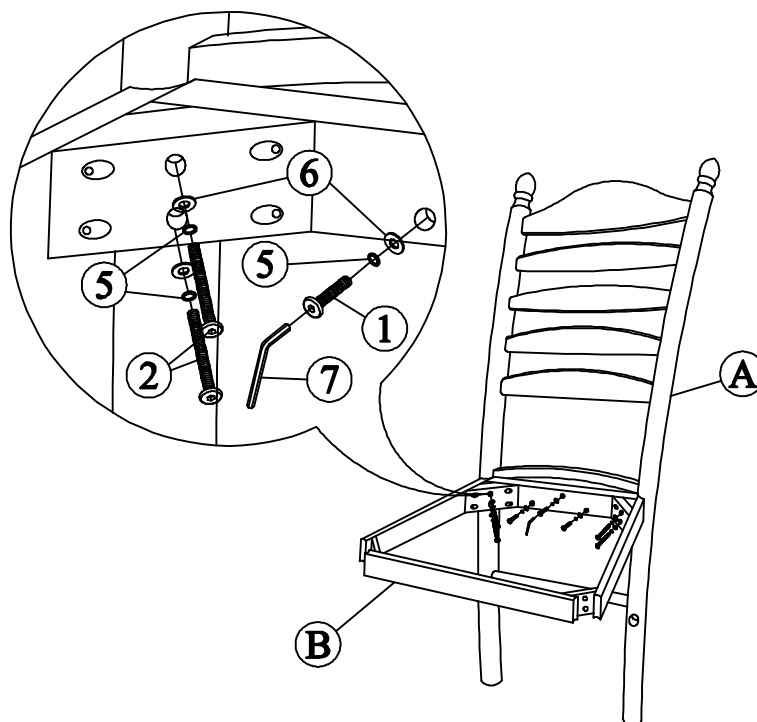
When unpacking, please be careful not to discard any parts with the packaging. Before continuing, please make sure you have all of the following hardware:

NO	Description	Qty	Sketch	NO	Description	Qty	Sketch
1	Short bolt (M6x40mm)	3		2	Long bolt (M6x80mm)	4	
3	Medium bolt (M6x60mm)	4		4	Screw (M4x35mm)	10	
5	Lock washer (Φ6.5x Φ11mm)	11		6	Flat washer (Φ6.5x Φ19mm)	11	
7	Allen key (4mm)	1					

## STEP 1

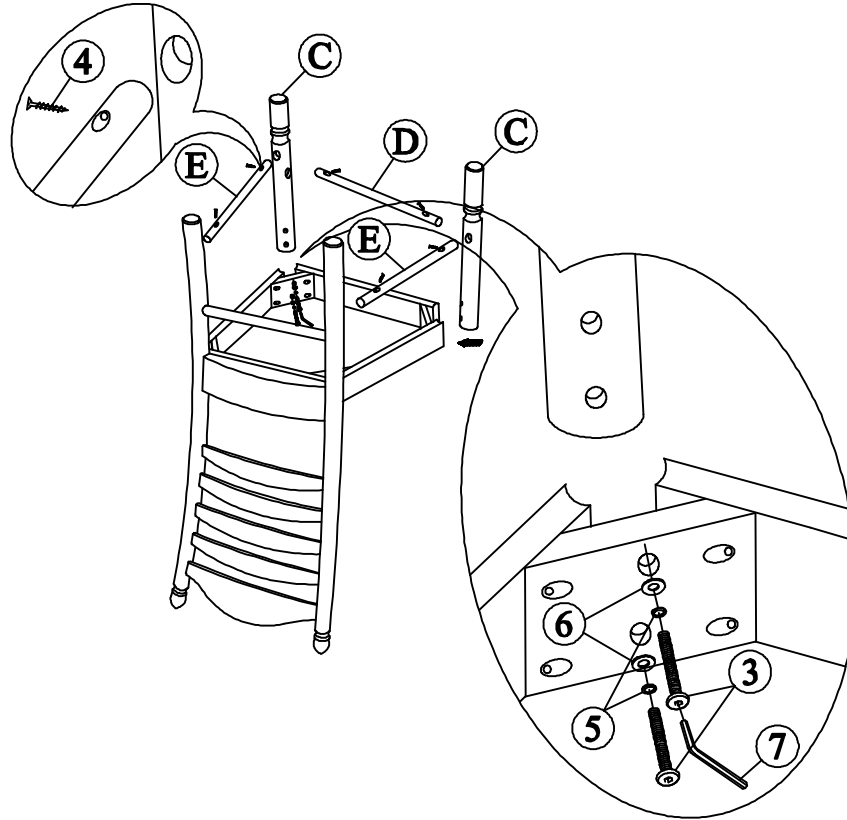
Attach seat frame (B) to the back (A) by using bolts (3) and (1), washers (5) and (6) tighten with allen key (7) as shown below.

Note: DO NOT tighten any of the bolts, until the chair is assembled, then put on a flat level surface to make sure the chair is level and then tighten the bolts.



## STEP 2

Attach front legs (C) to the seat frame. Use bolts (2), washers (5) and (6) and tighten with allen key (7). Place side stretchers (E) and front stretchers (D) between front and back legs, use the screw driver to tighten the screws (4) as shown below.



## STEP 3

Attach the seat (F) to top of the seat frame (from Step 2) by using screws (4) tighten with a screw driver.

