

MODEL: 50187TOF
ASSEMBLY INSTRUCTIONS
 READ AND SAVE THESE INSTRUCTIONS

READ INSTRUCTIONS ALL THE WAY THROUGH PRIOR TO ASSEMBLY.

THIS FOUNTAIN SHOULD TAKE APPROXIMATELY 10 MINUTES TO ASSEMBLE.

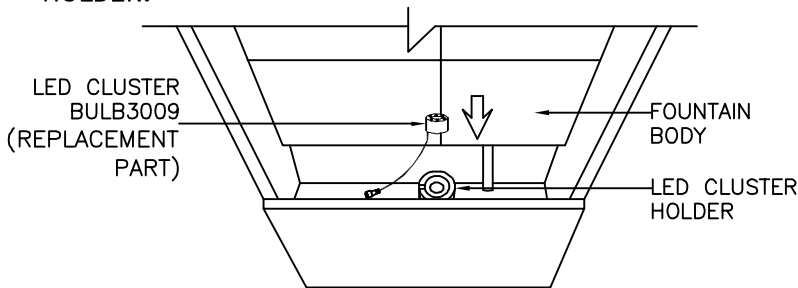
MAKE SURE ALL PARTS ARE FIRMLY TIGHTENED.

UNPACK THE FOUNTAIN

YOU SHOULD HAVE RECEIVED THE FOLLOWING PARTS: FOUNTAIN BODY, LED CLUSTER, PUMP, TRANSFORMER, LID AND (2) HOOKS.

FOUNTAIN ASSEMBLY

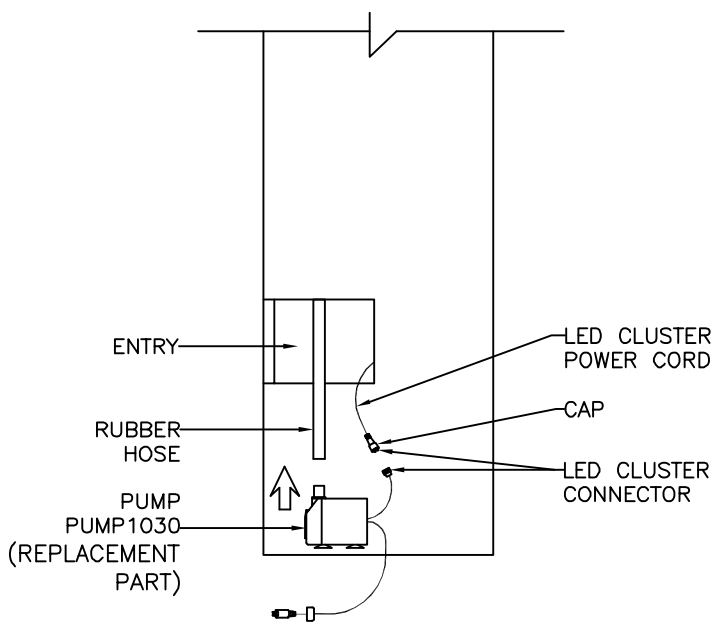
1. PLACE LED CLUSTER INTO LED CLUSTER HOLDER, MAKE SURE THE LIGHT POWER CORD EXITS OUT FROM CHANNEL IN LED CLUSTER HOLDER.



FRONT VIEW

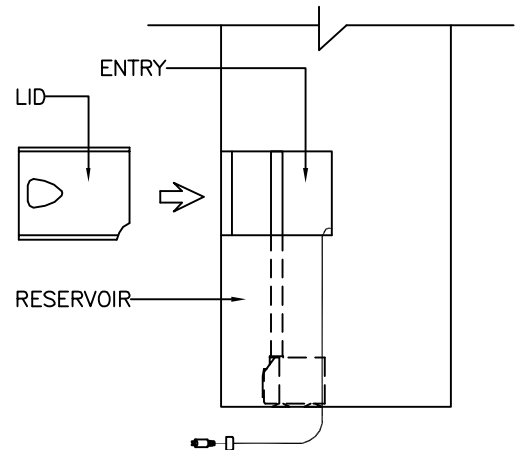
2. JOIN THE LED CLUSTER CONNECTORS AND SCREW THE CAP TIGHTLY TOGETHER.

3. ATTACH PUMP TO RUBBER HOSE, THEN PLACE PUMP FLAT INTO RESERVOIR FROM ENTRY.



BACK VIEW

4. SLIDE LID INTO THE SLOTS ON BACK OF FOUNTAIN BODY TO COVER THE ENTRY.



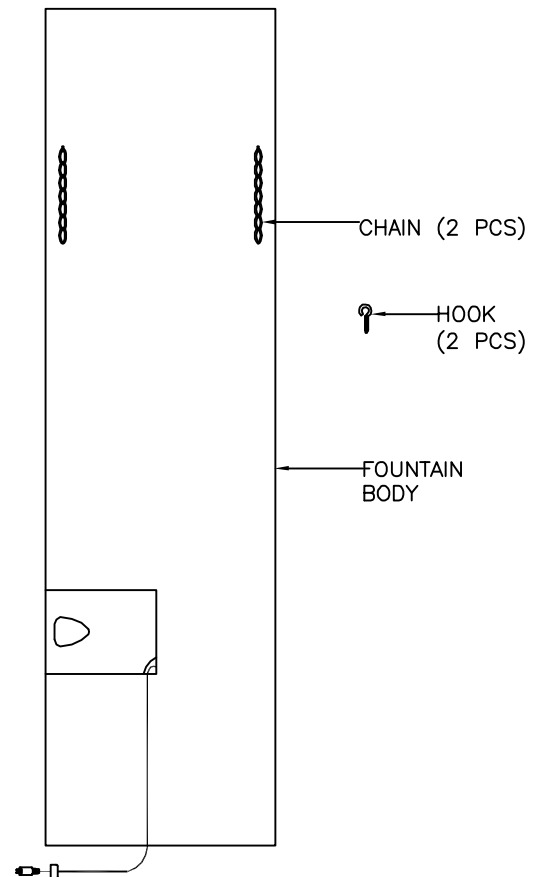
BACK VIEW

OPTIONAL:

5A. TO PREVENT FOUNTAIN FROM TILTING, IT CAN BE ATTACHED TO THE WALL. MEASURE DISTANCE FROM FLOOR TO CHAINS ON BACK OF FOUNTAIN.

5B. SCREW (2) HOOKS (INCLUDED) IN WALL AND SECURE FOUNTAIN TO WALL BY PLACING HOOKS IN CHAINS.

IMPORTANT NOTE: FOUNTAIN BODY MUST SIT ON FLOOR, NOT HANG ON WALL.



MODEL: 50187TOF
ASSEMBLY INSTRUCTIONS
READ AND SAVE THESE INSTRUCTIONS

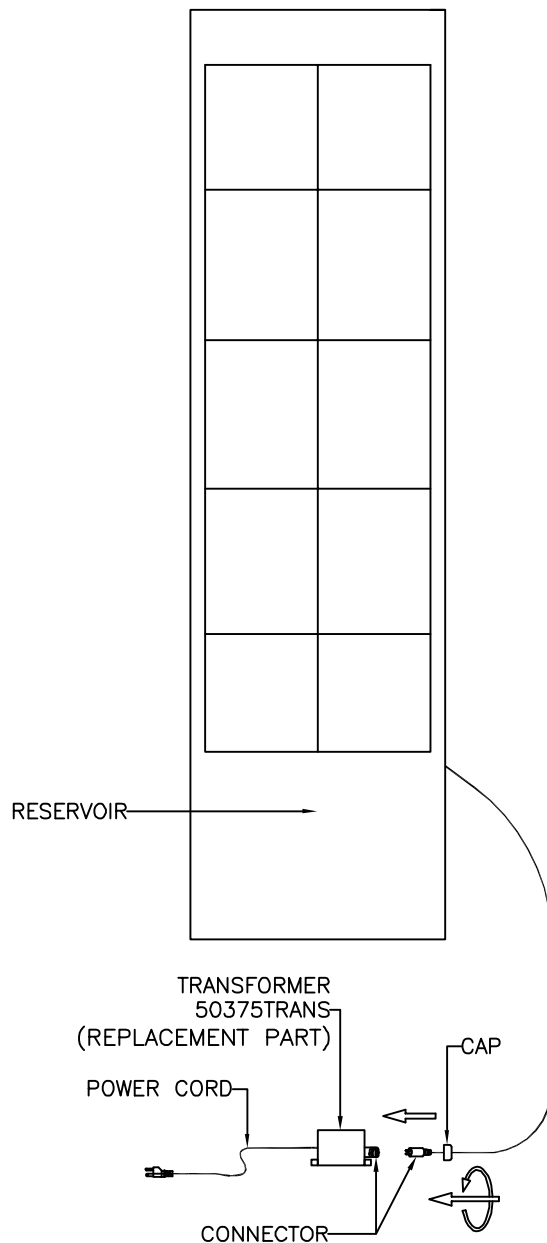
FOUNTAIN ASSEMBLY

6. FILL RESERVOIR WITH 1 GALLON OF WATER TO COMPLETELY SUBMERSE THE PUMP.

NOTE: DISTILLED WATER IS RECOMMENDED TO REDUCE MINERAL DEPOSITS AND BACTERIA BUILD-UP.

7. JOIN THE CONNECTORS AT TRANSFORMER AND SCREW THE CAP TIGHTLY TOGETHER.

8. PLUG POWER CORD INTO OUTLET, YOUR NEW FOUNTAIN IS READY FOR USE.



TROUBLE SHOOTING:

1. IF YOUR FOUNTAIN DOES NOT WORK, CHECK PLUG AT THE SOCKET. MAKE SURE THE PLUG IS FULLY AND PROPERLY INSERTED INTO THE WALL OUTLET.

2. NEXT CHECK TO MAKE SURE THE OUTLET IS POWERED.

3. IF THE FOUNTAIN STILL DOES NOT WORK, PLEASE CONTACT YOUR DISTRIBUTOR OR PLACE OF PURCHASE.

SPLASHING DISCLAIMER:

SPLASHING MAY OCCUR WHEN FOUNTAIN IS INITIALLY TURNED ON. PROTECT SURROUNDING SURFACES AS NEEDED.

IMPORTANT PUMP INFORMATION:

PUMP MUST BE FULLY SUBMERSED IN WATER WHILE OPERATING.

WATER:

TO REDUCE MINERAL DEPOSITS AND BACTERIA BUILD UP THE USE OF DISTILLED WATER IS RECOMMENDED.

WARNING:

* ONCE A WEEK INSPECT FOUNTAIN, FLOOR AND ADJACENT WALL FOR MOISTURE BUILD-UP AND CLEAN AS NECESSARY. THIS IS ESPECIALLY IMPORTANT FOR HUMID ENVIRONMENTS.

** THIS FOUNTAIN IS RATED FOR INDOOR AND OUTDOOR USE.

*** THIS UNIT MUST BE CONNECTED TO A SUPPLY CIRCUIT THAT IS PROTECTED BY A GROUND FAULT CIRCUIT INTERRUPTER (GFCI). THE GFCI SHOULD BE TESTED ON A ROUTINE BASIS. TO TEST THE GFCI, PUSH THE TEST BUTTON. THE GFCI SHOULD INTERRUPT POWER. PUSH THE RESET BUTTON. POWER SHOULD BE RESTORED. IF THE GFCI FAILS TO OPERATE IN THIS MANNER, THE GFCI IS DEFECTIVE.

**** THE FOUNTAIN IS FOR FLOOR USE ONLY, WALL BRACKET IS FOR ADDED STABILITY. FOUNTAIN MUST MAINTAIN CONTACT WITH LEVEL FLOOR OPERATE PROPERLY.

AVAILABLE PARTS ARE:
BULB3009 (LED CLUSTER)
PUMP1030 (PUMP)
50375TRANS (TRANSFORMER)