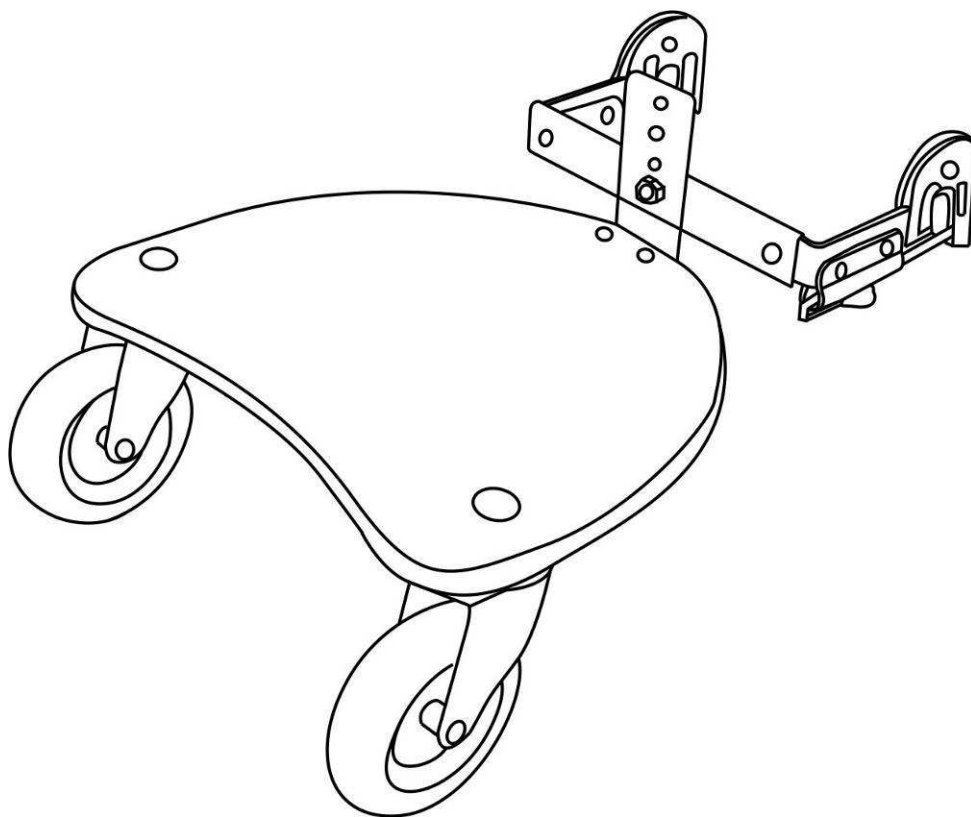


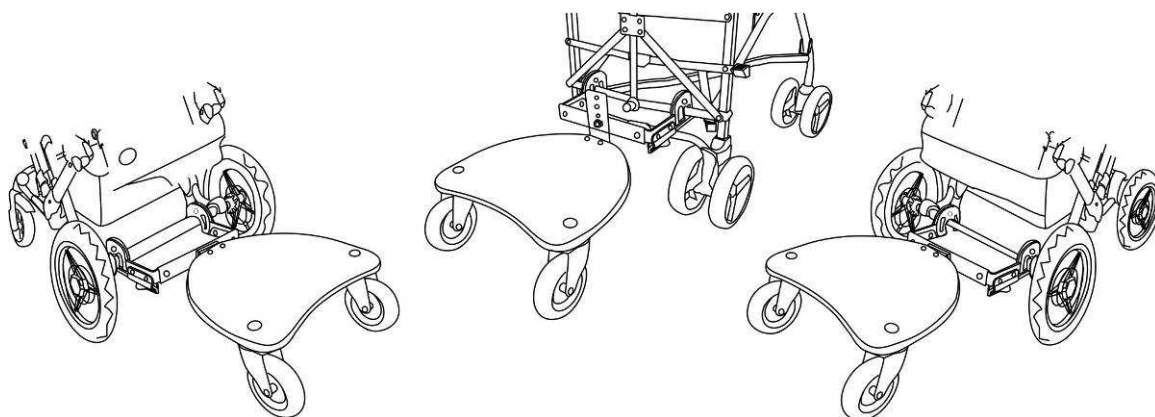
# Junior Rider Plus

## Instruction Manual



# Junior Rider Plus

No.	Parts list	Quantity
1	Foot-board	1
2	Wheel	2
3	M10 Screw	2
4	M10 Nut,	2
5	Coupling adaptor	6
6	Coupling wire	2
7	Coupling plate with screws M6	1
8	M6 nut	3
9	L-attachment	1
10	M6 Screw	2
11	M6 Screw (Plastic board only)	1



The Rider that you have purchased is a product that enables you to transport your child comfortably and without fatigue in the pram. The Junior Rider Plus is a practical and comfortable product and can be attached to the axle, rear bar and folding plate of most of prams, strollers and buggies.

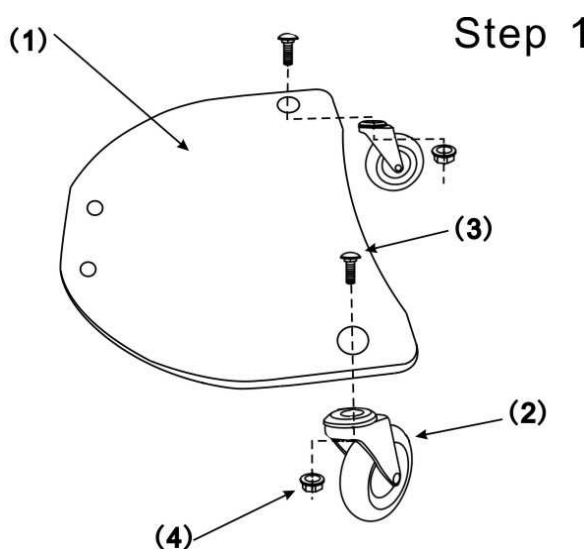
Please read this instruction manual carefully before using the Rider. Incorrect use can endanger the safety of your child.

## Caution

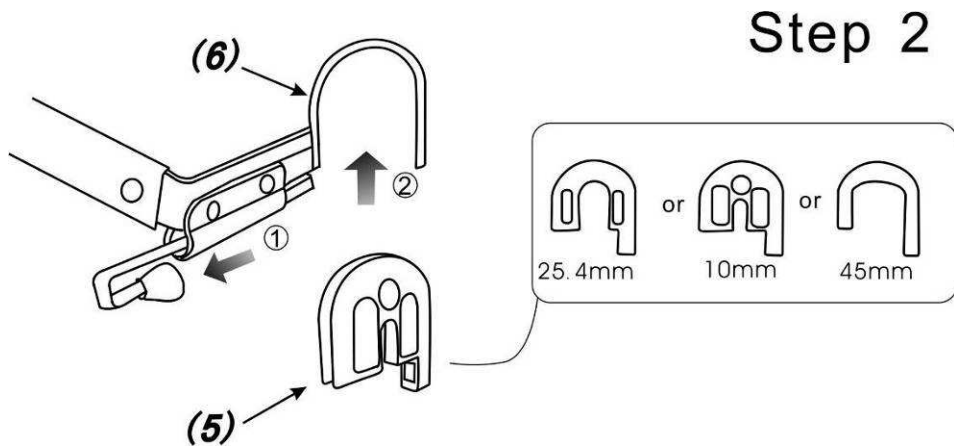
- The Rider is built for children **aged upwards of 15 months and with a body weight of up to 20 kg.**
- The Rider is developed for prams, strollers and folding buggies with a rigid rear axle or tube, horizontal bow for securing with a diameter of up to 45mm tube. It may not be suitable for some baby carriages without applicable rear construction or in cases where the brake function is hindered. Please consult your specialist dealer before making your purchase.

## Assembly instructions

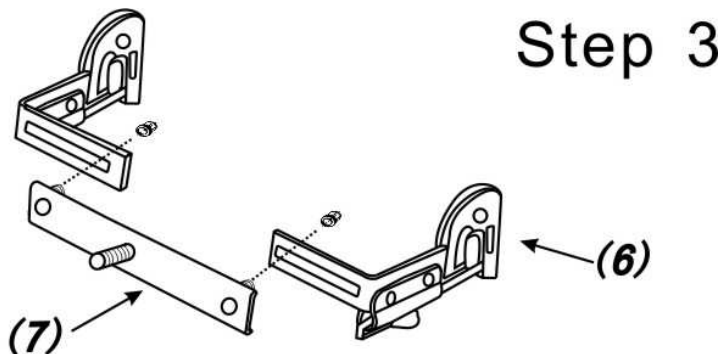
**Step 1** Assemble the **wheels (2)** on the foot-board **(1)** with the screws **(3)** and nuts **(4)**. Ensure that the screws are firmly tightened. Use the attached tool for this and the further steps.



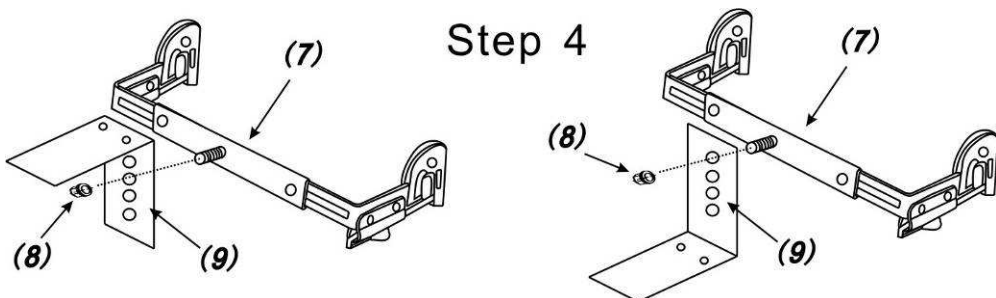
**Step 2** The coupling part (6) Junior Rider Plus is provided with 3 pairs of adaptors that fit most of the baby carriages at the rear part for 10mm axel(folding pate), 1" (25.4mm) tube, and up to 45mm tube. Assemble the fitting pairs of adaptor in the coupling wire by pulling and hold the trigger as illustrated and sliding the adaptor up into the coupling wire at both sides.



**Step 3** The coupling part (6-7) has already been pre-assembled by the manufacturer as per the following drawing. If the pram is equipped with a basket, it can be of help if some basket wires are cutoff so that sufficient space can be created for the coupling hooks.



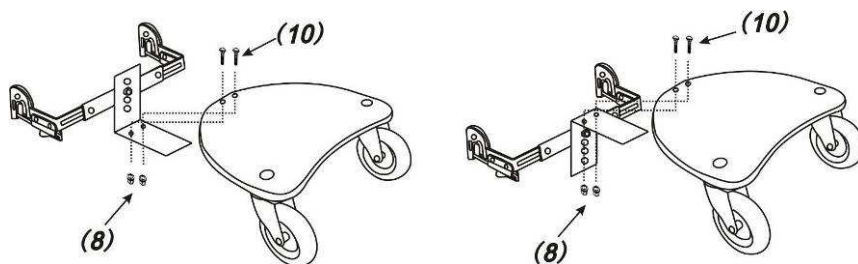
**Step 4** Measure the axle height of your pram. Screw connect the L-attachment (9) provisionally with the coupling plate (7), depending on the axle height with the L-attachment upwards or downwards (see drawing).



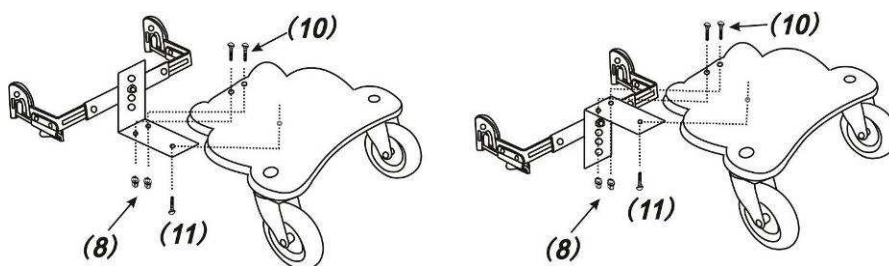
**Step 5** Assemble the foot-board (1) on the L-attachment (9) using the screws, washers

(10) and nuts (8). Hang the coupling set onto the pram axle with both hooks. Alter the height on the L-bar (9) by selecting the corresponding hole height (9) until the board is positioned **horizontally** to the ground. The foot-board is positioned horizontally at a height of 16 cm above the ground.

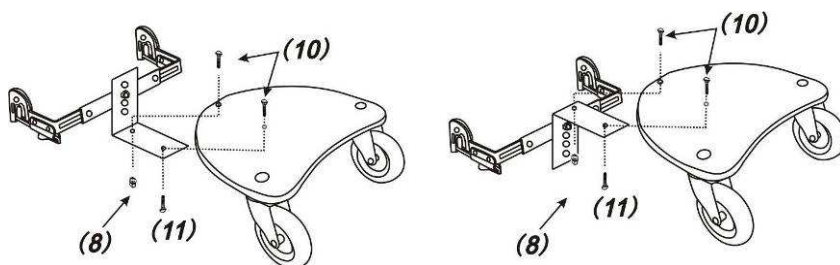
### Step 5A (ALU-BOARD)



### Step 5B (HDPE-BOARD)

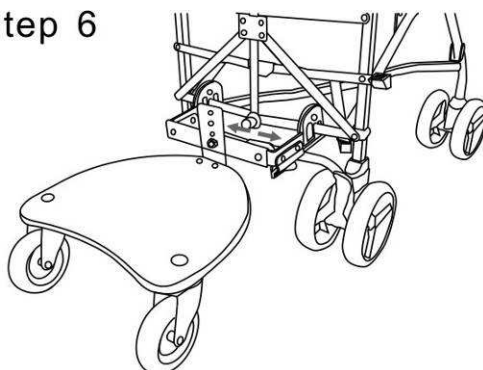


### Step 5C (WOOD-BOARD)



**Step 6** Now adapt the coupling parts (6L-6R) to the pram axle as far as the greatest possible width. Fix all screws in this position. Your Junior Rider Plus is now ready for use.

### Step 6



### Safety instructions

- Do not use the Junior Rider Plus until your child can walk independently and without help. Children must only be transported on the foot-board in a standing position.
- Allow your child to alight from the Junior Rider Plus before reaching pavement edges, stairs, steep paths, tight corners, as well as when maneuvering backwards.
- There may be types of pram for which **the Junior Rider Plus is not suitable** because the coupling cannot be attached firmly to the frame construction. Consult your specialist dealer before making your purchase.
- Before starting out on each journey, check whether Board and pram are correctly connected to one another.
- From time to time, check that all screws and mountings of the Junior Rider Plus are sitting firmly and that all parts of the pram are OK.
- No alterations must be made to the Junior Rider Plus or pram which result in safety no longer being guaranteed.
- In the event of any possible damage to the device, only original replacement parts of the manufacturer must be used.
- The Junior Rider Plus is not suitable for use on snow or soft surfaces.
- Clean the Board and the wheels from time to time with warm soapy water.
- Please keep the plastic packing away from children or dispose of it as there is a risk of suffocation.
- Keep the instruction manual carefully for any possible subsequent users.
- Apart from this, adhere precisely to the instructions of your pram manufacturer.

## WARNING

- The use of the Junior Rider Plus is only admissible if there is a second child in the pram or if the pushing handles of the pram are held tightly with both hands by an adult.
- The Junior Rider Plus is not a toy. **Never leave your child unattended.**
- The Junior Rider Plus must not be used if you go jogging with the pram.
- The Junior Rider Plus is designed for children **upwards of 15 months and up to a maximum weight of 20 kg**. In order to guarantee the safety and functionality of the device, avoid any overloading and under no circumstances use it for transporting other items.