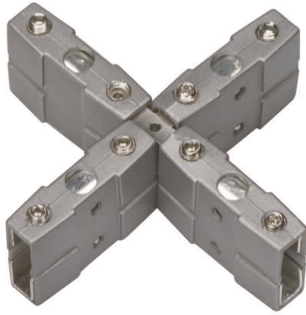


"X" Connector

SPECIAL INSTALLATIONS



Shown approximately 70% actual size.

DESCRIPTION

The "X" connector joins four pieces of Rail. The connector must be supported with four rigid or adjustable standoffs (sold separately), each placed within 1' of the connector. These connectors are conductive, so you may power the system from any of the runs.

FINISH

Bronze, Satin Nickel.

WEIGHT

0.08 lb./0.04 kg. ±

tiella_x_connector_spec.pdf



ORDERING INFORMATION

800RLCTX FINISH _____
 Z Bronze
 S Satin Nickel

tiella
real light, real simple

7400 Linder Avenue T 847.410.4400
 Skokie, Illinois 60072 F 847.410.4500
 www.tiella.com

800RLCTX_____

FIXTURE TYPE: _____

JOB NAME: _____