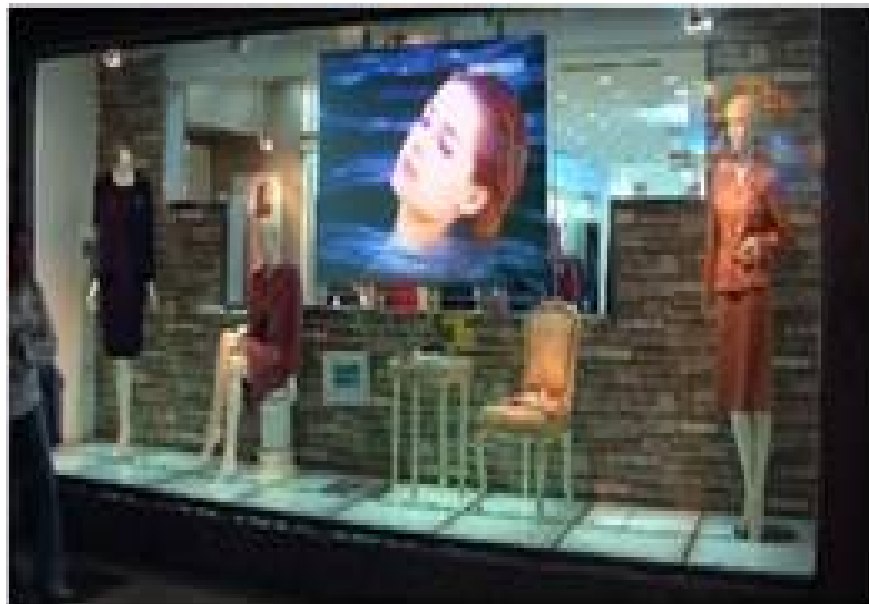




Self-Adhesive Rear Projection Screen Film
Insta-RP Screen Series

User's Guide



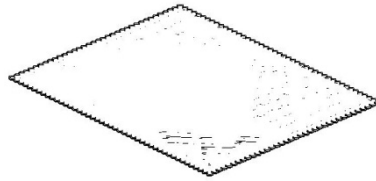
Parts List for Insta-RP Series

Please make sure all parts listed below are included before proceeding with the installation.

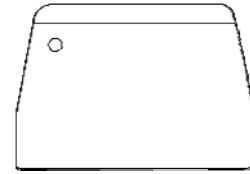
a.



b.



c.



Parts List	QTY
a. Insta-RP Screen Material	1
b. Microfiber cleaning cloth	1
c. Scraper	1

Caution Notes:

1. This product is an adhesive rear-projection screen that can be applied to various surfaces such as transparent glass or acrylic.
2. This product is made for one-time permanent application. It has a non-reusable adhesive film that bonds firmly to a window surface. If the surface has any layer treatment such as tinting, it is likely that the layering will be damaged upon removal of the material.
3. To ensure an even and “bubble-free” installation. Make sure that the window surface is clean and evenly moistened previous to the installation.
4. Do not fold the Insta-RP material. Folding will result in a permanent crease that cannot be removed.
5. Avoid touching the material with any hard or sharp objects that may cut scratch or otherwise deface the screen.
6. The Insta-RP material is applied to a moist surface. This can impact the installation of the material by possibly creating slight ripples or bubbles. These will disappear within the first few weeks as the micro-droplets of water trapped in the adhesive evaporate.

Installation

1. Use a spray bottle filled with water and a mild detergent (1:1000 ratio column).
2. Thoroughly clean the glass surface using the correct glass-cleaning equipment.
3. Make sure that the glass surface is smooth (unblemished) and perfectly flat.
4. Cut the screen to fit the required size of the product.



5. Partially separate the film from the screen's adhesive backing.
*(*Manufacturer's Tip: It is easier to apply the screen while separating the film from the adhesive simultaneously. This keeps the material from sticking together or going on the surface unevenly.*



6. Spray applicators are ideal to evenly spread the moisture before attaching the screen material to the glass.



7. Carefully smooth out the surface (preferably using latex gloves) to ensure that the screen is level with no bubbles or ripples present.
8. Now that the material is perfectly flat, make sure that it is aligned well.



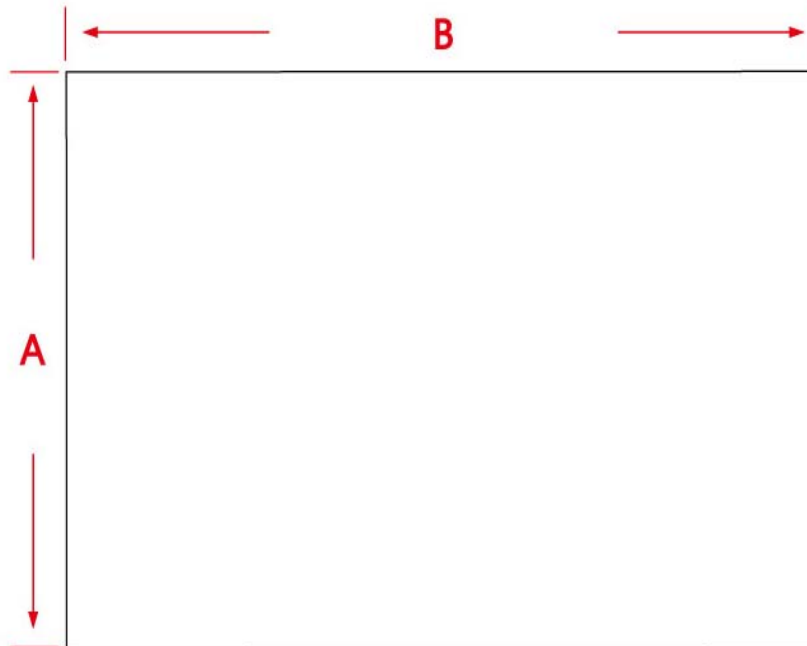
9. Use the included Scraper or a leveling brush to eliminate the residual moisture and make sure that the material has been applied properly.
10. Allow material to stand unused for 2 to 3 hours so the adhesive can bond and set.



Insta-RP Dimension Table

Unit : mm				
Model	Diagonal & Ratio Size	View Height (A)	View Width (B)	Thickness (C)
iRP74V	74"(4:3)	1125	1500	0.10
iRP99V	99"(4:3)	1500	2000	0.10
iRP68H	68"(16:9)	844	1500	0.10
iRP103X-100H	103"/100"(16:10/9)	1500	2210	0.10
iRP121H	121"(16:9)	1500	2666	0.10
iRP70X	70"(16:10)	938	1500	0.10
iRP112X	112"(16:10)	1500	2400	0.10
iRP151C	151"(2.35:1)	1500	3525	0.10
iRP5x20	N/A	1500	10000	0.10
Unit : inch				
Model	Diagonal & Ratio Size	View Height (A)	View Width (B)	Thickness (C)
iRP74V	74"(4:3)	44.3	59.1	0.0039
iRP99V	99"(4:3)	59.1	78.7	0.0039
iRP68H	68"(16:9)	33.2	59.1	0.0039
iRP103X-100H	103"/100"(16:10/9)	51.9	87.0	0.0039
iRP121H	121"(16:9)	59.1	104.9	0.0039
iRP70X	70"(16:10)	36.9	59.1	0.0039
iRP112X	112"(16:10)	59.1	94.5	0.0039
iRP151C	151"(2.35:1)	59.1	138.8	0.0039
iRP5x20	N/A	59.1	393.7	0.0039

The listed measurements are for general reference only. Please contact Elite Screens to verify product design and dimensions before attempting to integrate its products with any structural or furniture modification. Although a manufacturer may offer product advice, it may be taken or disregarded at the integrator's discretion. Elite Screens will not be held responsible or be otherwise liable for faulty installations



Warranty Policy

- **Two (2) Year** parts & Labor warranty from defects in workmanship from purchase date as follows (except for refurbished units as specified below).
- **Three (3) Year** parts and labor warranty from defects in workmanship for **GEMR** (Government, Educational, Military, & Religious) purchases of new product only.
- **Refurbished Units** carry a **90-DAY** parts and labor warranty.
- Each party will be responsible for one way shipping during the warranty period.
- A **RMA (Return Merchandise Authorization) number** must be issued in order to process a replacement or to authorize a return for warranty repair. Elite Screens will, at its sole option replace or repair the defective unit with a replacement *(see exceptions below) after the defective unit or parts have been received. Once the product is received, Elite Screens will send out a replacement *unit to the customer by ground service (subject to inventory availability).
- **Do Not Return Any Unauthorized Items to Elite Screens, as they will be refused and returned at your expense. The RMA Number must be included on the outside label of your shipping box. Our warehouse is not authorized to accept returns without an RMA number on the shipping label.**
- **RMA Numbers are valid for 45 days from the date issued.**
- **Missing Parts** must be reported within 7 days of receipt. If reported after 7 days, the customer will be responsible for shipping and handling fees. If reported after 30 days of receipt, the customer will be responsible for cost of parts and shipping & handling fees.

*A New or refurbished replacement will be send out to the customer depending on the type of purchase (new or refurbished) and based on stock availability.

North America only U.S. and Canada

For Warranty and Service requests, please submit an RMA/Service Form at:
www.elitescreens.com/warrantysupportform

Please visit this link for full Warranty information:
www.elitescreens.com/warranty

For Customer Service and Technical questions, please contact Elite Screens at:
Telephone: (877) 511-1211 service@elitescreens.com
Fax: (562) 926-8433 techsupport@elitescreens.com

REMEMBER TO REGISTER YOUR PRODUCT AT:

WWW.ELITESCREENS.COM/REGISTER

Contact Info

US & Canada Tech Support & Warranty Claim

Please contact us at service@elitescreens.com or call +1 877-511-1211 #3 or fax +1-562-926-8433

Europe Tech Support & Warranty Claim

Please contact us at service@elitescreens.eu or call +49-(0) 40-30392958

Asia Tech Support & Warranty Claim

Please contact us at service@elitescreens.com.cn or call +86-(0) 755-8461-7989

Taiwan Tech Support & Warranty Claim

Please contact us at service@elitescreens.com.tw or call +866+2+8990-1999

America:

Elite Screens Inc

16410 Manning Way
Cerritos, CA 90703 USA
Tel: +1-877-511-1211
Fax: +1-562-926-8433
info@elitescreens.com
www.elitescreens.com

Asia:

Elite Screens China Corp.

Longxi Duimianling Industry Zone
Longcheng Longgang District,
ShenZhen GuangDong, China
Tel: +86-(0)755-8461-7989
Fax: +86-(0)755-8461-7669
info@elitescreens.com.cn
www.elitescreens.com.cn

Taiwan:

Elite Screens Taiwan Corp.

4F., No. 42-1 Wuguan Rd. Wugu Township Taipei
County 248, Taiwan (Wugu Industrial Park)
Taiwan (R.O.C)
Tel: +886+2+8990-1999
Fax: +886+2+8990+1366
info@elitescreens.com.tw
www.elitescreens.com.tw

Europe:

Elite Screens Europe

Lübecker Straße 1
22087 Hamburg, Germany
Tel: +49-4030392494
Fax: +49-40-49219200
info@elitescreens.eu
www.elitescreens.eu

Elite Screens France S.A.S

11, Allée William Penn
92150 Suresnes, France
Tel: +33-1-45064735
Fax: +33-1-45064735
info.fr@elitescreens.com
www.elitescreens.com/fr

Japan:

Elite Screens Japan Corp.

467-2-606 Tsuruma, Machida-shi,
Tokyo, 194-0004 Japan
Tel: 0120-07-0008
Fax: +81(0)42-706-9130
info@elitescreens.jp
www.elitescreens.jp

Latin America Contact:

Info.la@elitescreens.com

East Asia Contact:

Info.ea@elitescreens.com

India Contact:

Info.ea@elitescreens.com