

- Home Theater Fixed Frame Screen
- Retail Fixed Frame Projection Screen



Manual Screens

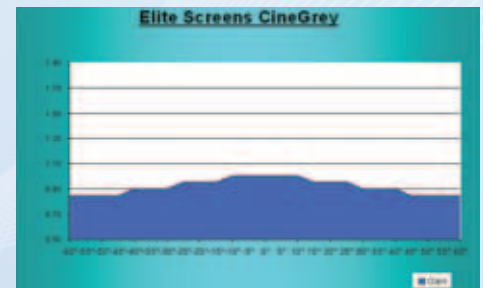
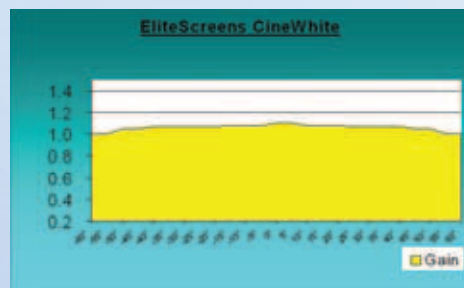
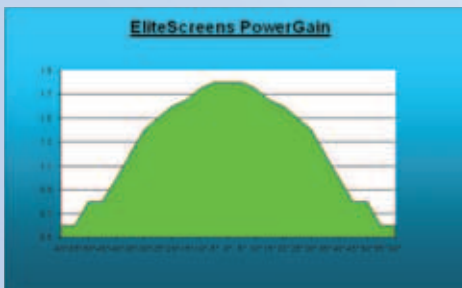
Electric Screens

SilverFrame Series

Portable Screens

Features and Benefits

- Fixed frame home theater screen for .com sales channel
- Brushed 2.25" Aluminum frame with 1" inner black matte
- Standard black backed screen material eliminates light penetration
- Flat tension screen surface
- Select viewing surface from
 - ✓ CineWhite™ (1.1 Gain) Wide projection viewing angle with uniform diffusion
 - ✓ CineGray™ (1.0 Gain) with superior black/white contrast
 - ✓ PowerGain™ (1.8 Gain) Pearlescent home theater material
- Easy to assemble and install in minutes
- Sliding wall mounts to ensure the installation is properly centered
- Sizes available from 84", 92", 100", 106" and 120"
- 2-Year manufacturer's Premium replacement warranty



CineWhite™ Screen Material has a wide viewing Angle in 1.1 Gain, suitable for most applications including commercial and home theater presentations.

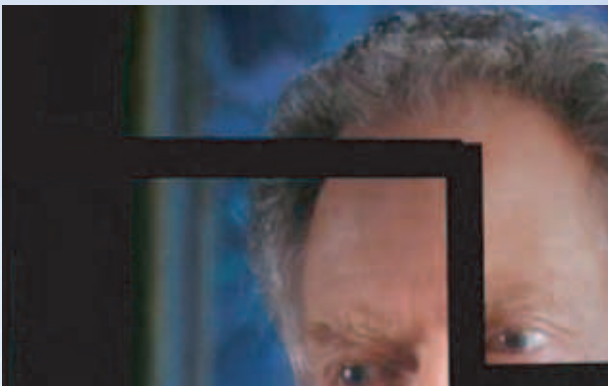
CineGrey™ Material is best for those who using low contrast ratio LCD projectors with a need to enhance black levels for greater picture clarity.

PowerGain™ Enhances the color reproduction with low output/high resolution projectors in a home theater environment.

See what the Experts said about CineWhite & CineGrey Material

I found that it had a decent reflectivity to it, but didn't suffer too much from hot spotting (which obviously you would expect from a lower gain screen), nor did it have any sparkles or other anomalies to it. Elite certainly has a good idea here. Good performance, good build quality, and good features in a screen, for a lower price point.

AV Science, NY (contrast grey material)



By comparison, the Firehawk® screen tends to reject ambient light from the side, a little better than the ezFrame by Elite. (All's fair - an equivalent Firehawk fixed wall projector screen is much over double the price. Color was virtually identical, but yellows did appear just a touch stronger than on the Firehawk®. This was very close and not an issue. Overall color was very good. With a 100" 16:9 Elite ezFrame (SilverFrame) screen selling for about half of a Da-Lite Cinema Contour with ProTrim (their fancy flourish border), and barely a 1/3 of a Stewart Luxus Deluxe, it allows home theater people to own an attractive looking fixed wall screen, with good performance, at a price that simply isn't available from the larger established brands.

Art Feierman / Projectorreviews.com

SilverFrame Series: Silver Fixed Frame High Gain Screen 16:9 for Home Cinema

Model	Nominal Diagonal	View Height (in)	View Width (in)	View Height (cm)	View Width (cm)	Overall Width (in)	Overall Width (cm)	Overall Height (in)	Overall Height (cm)	Net Wt. (lbs.)	Net Wt. (Kgs)	Gain	Screen Material	Frame Width
SilverFrame84GH1	84" (16:9)"	41	73	104.1	185.4	77.0	195.6	43.3	110.0	19	8.6	1.8	PowerGain	2" (5cm)
SilverFrame92GH1	92" (16:9)"	45	80	114.3	203.2	84.0	213.4	47.3	120.0	23	10.4	1.8	PowerGain	2" (5cm)
SilverFrame100GH1	100" (16:9)"	49	87	124.5	221.0	91.0	231.1	51.2	130.0	26	11.8	1.8	PowerGain	2" (5cm)
SilverFrame120GH1	120" (16:9)"	59	104	149.9	264.2	108.0	274.3	60.8	154.3	30	13.6	1.8	PowerGain	2" (5cm)
SilverFrame84H1	84" (16:9)"	41	73	104.1	185.4	77.0	195.6	43.3	110.0	19	8.6	1.0	PowerGain	2" (5cm)
SilverFrame92H1	92" (16:9)"	45	80	114.3	203.2	84.0	213.4	47.3	120.0	23	10.4	1.0	CineGrey	2" (5cm)
SilverFrame106H1	106" (16:9)"	52	92	132.1	233.7	96.0	243.8	54.0	137.2	28	12.7	1.0	CineGrey	2" (5cm)
SilverFrame120H1	120" (16:9)"	59	104	149.9	264.2	108.0	274.3	60.8	154.3	30	13.6	1.0	CineGrey	2" (5cm)
SilverFrame84WH1	84" (16:9)"	41	73	104.1	185.4	77.0	195.6	43.3	110.0	19	8.6	1.1	CineWhite	2" (5cm)
SilverFrame92WH1	92" (16:9)"	45	80	114.3	203.2	84.0	213.4	47.3	120.0	23	10.4	1.1	CineWhite	2" (5cm)
SilverFrame100WH1	100" (16:9)"	49	87	124.5	221.0	91.0	231.1	51.2	130.0	26	11.8	1.1	CineWhite	2" (5cm)
SilverFrame120WH1	120" (16:9)"	59	104	149.9	264.2	108.0	274.3	60.8	154.3	30	13.6	1.1	CineWhite	2" (5cm)