

KESTREL SERIES

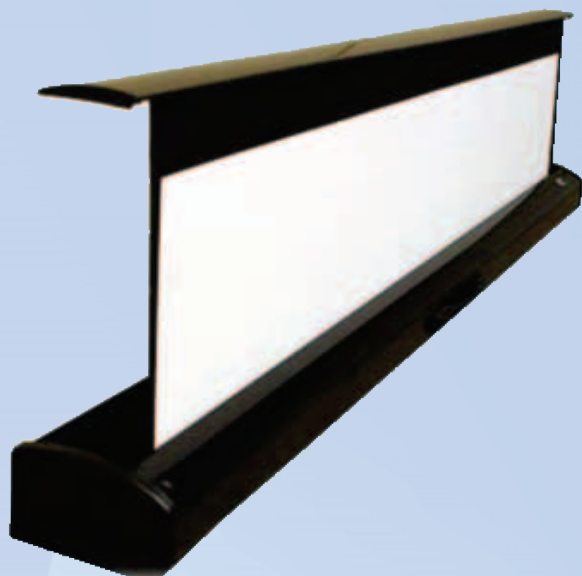
- Electric Floor Projection Screen
- Portable Motorized/Electric Floor Screen



The Kestrel Electric Floor Series has a stylish piano gloss finish makes it an attractive centerpiece for home theater and high level conference rooms where wall/ceiling installations are not practical. It is suitable for fixed or mobile presentations with the following features:



- The Kestrel Electric Floor Series has internal Radio Frequency (RF) and Infrared (IR) receivers
- Standard Universal Learning IR Remote (ZR800D) to control the Projector, Screen, TV, and DVD, up to 8 devices simultaneously.
- Enhanced RF(Radio Frequency) remote control with a 100' (30.5m) control range is included
- Built-In **5-12V projector trigger** - Synchronize Screen Up/Down with Projector On/Off
- The screen surface is our MaxWhite FG™ premium grade fiber glass-backed material
- Rises and lowers by our motorized precision “scissor-backed” cross spring risers
- Tubular motor allows swift operation with a superior weight tolerance and operational lifespan.
- Available Diag. size from 84"(213cm) or 100"(254cm) 4:3 or 16:9(HDTV) format



Durable and light weight aluminum casing with piano gloss finish

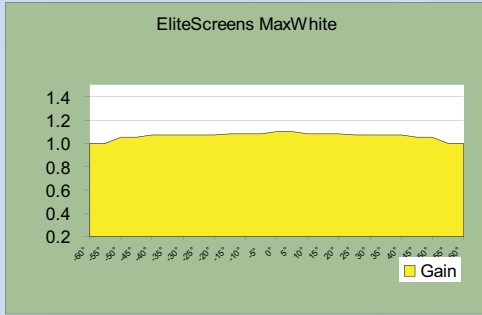
Manual Screens

Electric Screens

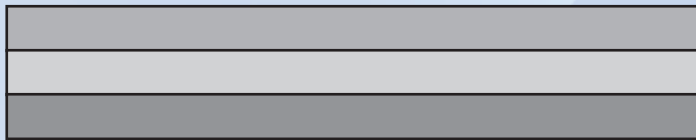
Fixed Frame Screens

Kestrel Series

- Electric Floor Projection Screen
- Portable Motorized/Electric Floor Screen



MaxWhite FG Screen Material is the enhanced version of our most versatile front projection screen surface with fiberglass backing for enhanced flatness. Fiber glass backing provides unlimited viewing angles with perfectly flat uniformity while giving precise definition and color reproduction with black and white contrast. Screen Surface is durable, mildew resistant and easy to clean.



MaxWhite FG™ Screen Material, Multi-Layer, Cross-Array Coated with Matte White Optical Material. It is flame and mildew resistant.

MaxWhite FG Coating w/ Pattern Texture

Internal Fiber Glass Textured Material

Black Soft Vinyl (Blocks Light Penetration)



TOTAL CONTROL SOLUTION

- IR(ZR800D) and RF remotes provide control options up to a 100' (30.5M) range even with the screen in a concealed location.
- Standard Built-In 5-12 Volt Trigger enables Drop/Rise Cycle to synchronize with the projector's power cycle
- Internal low voltage internal IR/RF receivers eliminates the need for a wall box
- Optional Wireless 5-12V Projector Trigger Option

Standard Elite ZR800D Universal Learning Remote Control allows one-touch regulation over your entertainment system managing up to 8 devices simultaneously. Each unit has a simplified programming option with learning function to accompany 800 pre-programmed TV/DVD/VCR codes.



All Elite Electric screens have various control options that work in conjunction with its Low Voltage Controller (LVC). Our 5-12V trigger port uses a standard RJ45 connection that can be utilized with other control attachments.