

EV-DECO13-SQR DECO Downlight Technical Data Sheet



DESCRIPTION

Domus lighting is pleased to announce the arrival of its NEW DECO range of LED down lights. The DECO LED down light has been added to our ever increasing EVERGREEN range of LED lighting products. This now extends the range of LED down lights and complements the newly released DLK range that remains at the top of the chain with regards to style, performance and pricing.

The DECO series has been introduced as a cost effective solution to energy efficient down lights and offers the customer a range of features not offered by others with similar products.



SPECIFICATION FEATURES

- 13W total power consumption which uses much less electricity over the traditional 50W halogen lamps
- Step back opal diffuser lens which not only offers a more diffused and wide light but gives you that anti-glare factor due to the step back feature
- Internal reflector system which controls the light evenly across the lens
- Samsung LED, a world leader in SMD LED technology
- High quality satin white trim or machined aluminium finish
- Universal 90mm hole cut out size
- High lumen output with over 849lm in warm white and 889 in white colour
- Mains dimmable LED driver that suits most currently available Australian dimmers including Clipsal C-Bus system
- Ultra slim mounting depth to maximize installation requirements

Product code: EV-DECO13-SQR-W-WW

Order code: 20524

Colour: Satin White - Warm White 3000K



Product code: EV-DECO13-SQR-A-WW

Order code: 20526

Colour: Aluminium - Warm White 3000K



Product code: EV-DECO13-SQR-W-W

Order code: 20525

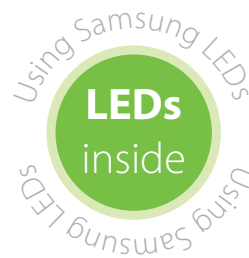
Colour: Satin White - White 5000K



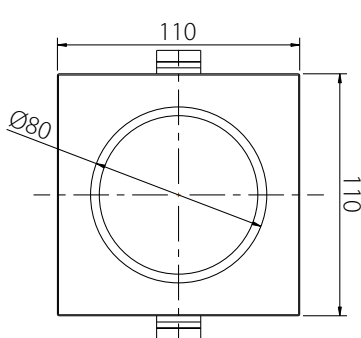
Product code: EV-DECO13-SQR-A-W

Order code: 20527

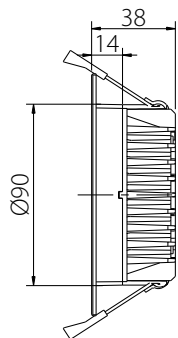
Colour: Aluminium - White 5000K



DIAGRAMS



Cutout: Ø90mm



White Finish



Aluminium Finish