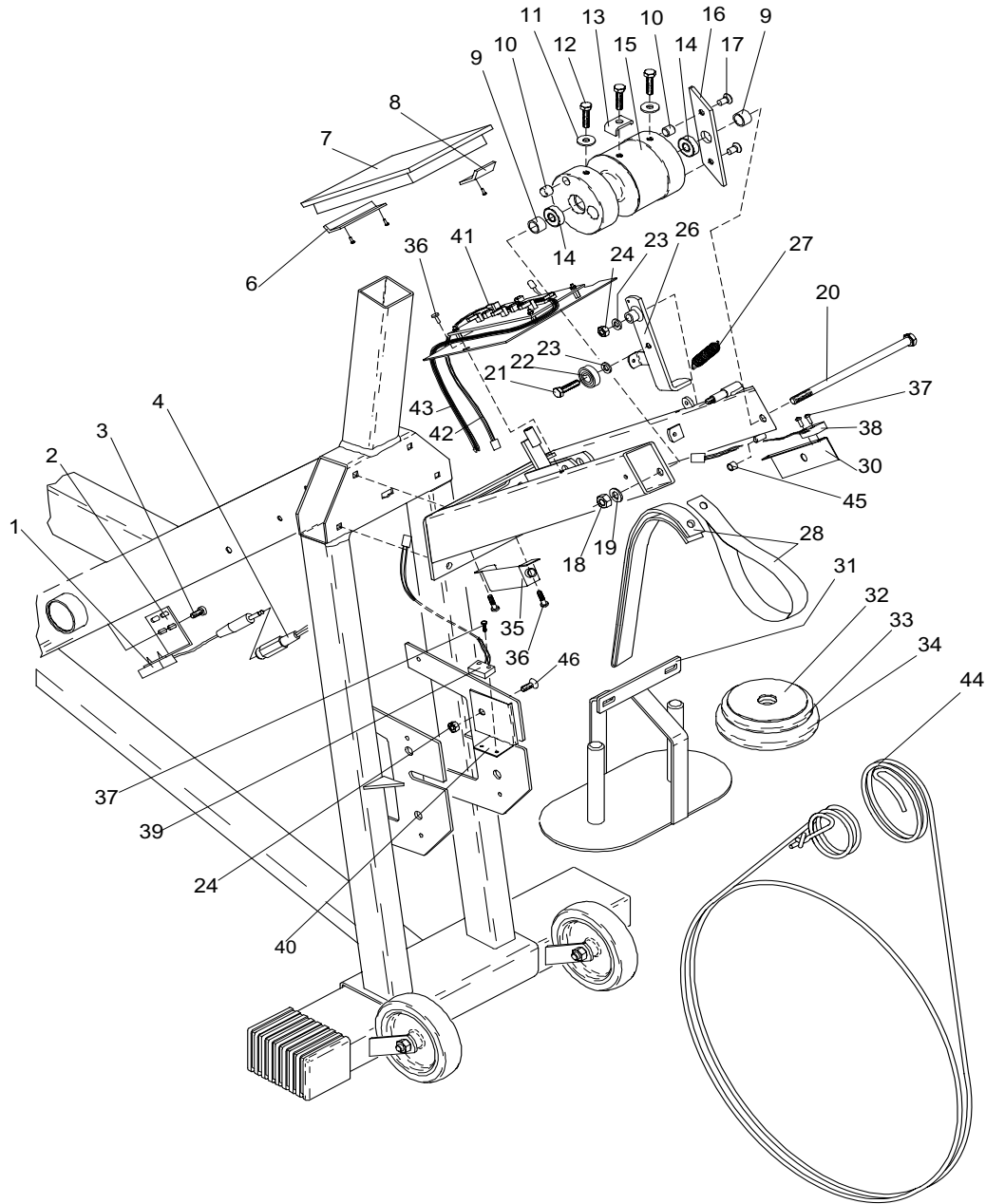


Article no.	Qty.	Pict. no.	Description	Article no.	Qty.	Pict.no	Description
8321-75	1	1	Pedal, pair	9300-3	1	29	Flywheel with sprocket, 22 kgs
8486-2	1		Toe slip	9000-17	1	30	.Spacer, 5mm
8495-7	2		Straps for toe slip	9300-17	1	31	.Spacer, 23mm
8323-2	2		Pedal cleats	9000-15	1	32	.Locking ring SgH 028
8523-2	1	2	Dust cover	19001-6	1	33	.Ball bearing SKF 6001-22
8523-115	1	3	Screw M6S 8.8M8x20 FZB	5799	1	34	.Nut
9300-401	1	4	Crank set, complete	9000-12	1	35	.Chain adjuster, pair
9326-164	1	5	Magnet	9300-18	1	36	.Axle,length 132 mm
8966-175	1	6	BB cartridge bearing	9106-13	1	37	.Sprocket, 14t
9300-133	1	7	Locking screw, compl.	9106-14	1	38	.Connection for same
9300-134	1	8	. Pressure washer, compl.	9300-7	4	39	Plastic cap, blue
9300-123	1	9	Top cover	9306-12	10	40	Plastic plug
9300-115	1	10	Saddle bush	9394-70	1	41	Frame cover, right
9336-111	1		Saddle post complete	9300-5	1	42	Support tube, front
9336-113	1	11	.Saddle post only	5844	4	43	Lock nut M8
9300-122	1	12	.Locking screw	5683	1	44	Screw M5
9300-716	1	13	.Saddle post bushing upper	5673-9	2	45	Screw M5x12mm
9336-114	1	14	.Saddle slide post	5681	1	46	Screw M5
9300-110	1	15	Saddle	5671-19	1	47	Screw M5
5466	1	16	Saddle bracket	9302-28	1	48	Plastic plug
9336-762	1	17	End cap	9300-6	1	49	Support tube, rear
9300-270	1	20	Handlebar, complete	9300-12	1	50	Screw MVBF M8 x 16 mm
1069-5	1	21	.Plug for handlebar	9300-55	1	51	Chain 116 link
9100-109	1	22	Expander screw complete	1109	1		.Chain lock
9100-110	1	23	Handle M10	9301-2	1	52	Frame
5866	1		Washer	9374-60	1	53	Bracket
9300-291	1	24	Expander wedge	5843-9	4	54	Nut M6
9394-41	1	26	Instrument cover	9374-29	1	55	Weight holder
5675-9	2	27	Screw	9374-9	1	56	Frame for equipment
9394-71	1	28	Frame cover, left	9000-29	2	57	Transport wheel, complete



Article no.	Qty.	Pict.no.	Description	Article no.	Qty.	Pict.no.	Description
9326-162	1	1	Sensor	9374-15	1	26	Stop lever
9326-166	1	2	Sensor holder	9100-20	1	27	Spring
9326-59	2	3	Screw	9324-26	1	28	Belt
9326-263	1	4	Cable	9374-22	2	30	Sensor holder
9374-172	1	6	Bracket	9324-25	1	31	Weight basket, 1kgs
9374-170	1	7	Digitalmeter	9102-30	4	32	Weight 0,1 kgs
9374-171	1	8	Bracket	9102-27	1	33	Weight 0,5 kgs
9127-37	2	9	Spacer 13 mm	9102-26	4	34	Weight 1,0 kgs
9374-16	3	10	Magnet	9374-23	1	35	Contact holder
5862	2	11	Washer M6	5675-9	4	36	Screw
14323-9	3	12	Screw M 6 x 16	9103-41	6	37	Screw
9324-70	1	13	Lock washer	9326-270	2	38	Sensor cable 390 mm
19088-6	2	14	Ball bearing 608-2Z	9326-169	1	39	Sensor cable 620 mm
9374-20	1	15	Tension devise	9374-24	1	40	Sensor holder
9374-21	1	16	Stop	9394-10	1	41	Electronic set
14379	2	17	Screw M 6 x 16	9394-12	1	42	Power cable
5844	1	18	Fiber nut M8	9394-11	1	43	Serial data cable
5864	1	19	Washer M8	9324-30	1	44	Brake belt
14374	1	20	Screw M8 x 160mm	9374-12	1	45	PVC cover
14320	1	21	Screw M6 x 10mm	14380	1	46	Screw
19003-40	1	22	Ball bearing 696-2Z	9339-27	1		PC cable
5863	2	23	Washer M6	9394-350	1		CD-ROM software
5843-9	1	24	Fiber nut M6	9384-67	1		Transformer 100 - 240 V