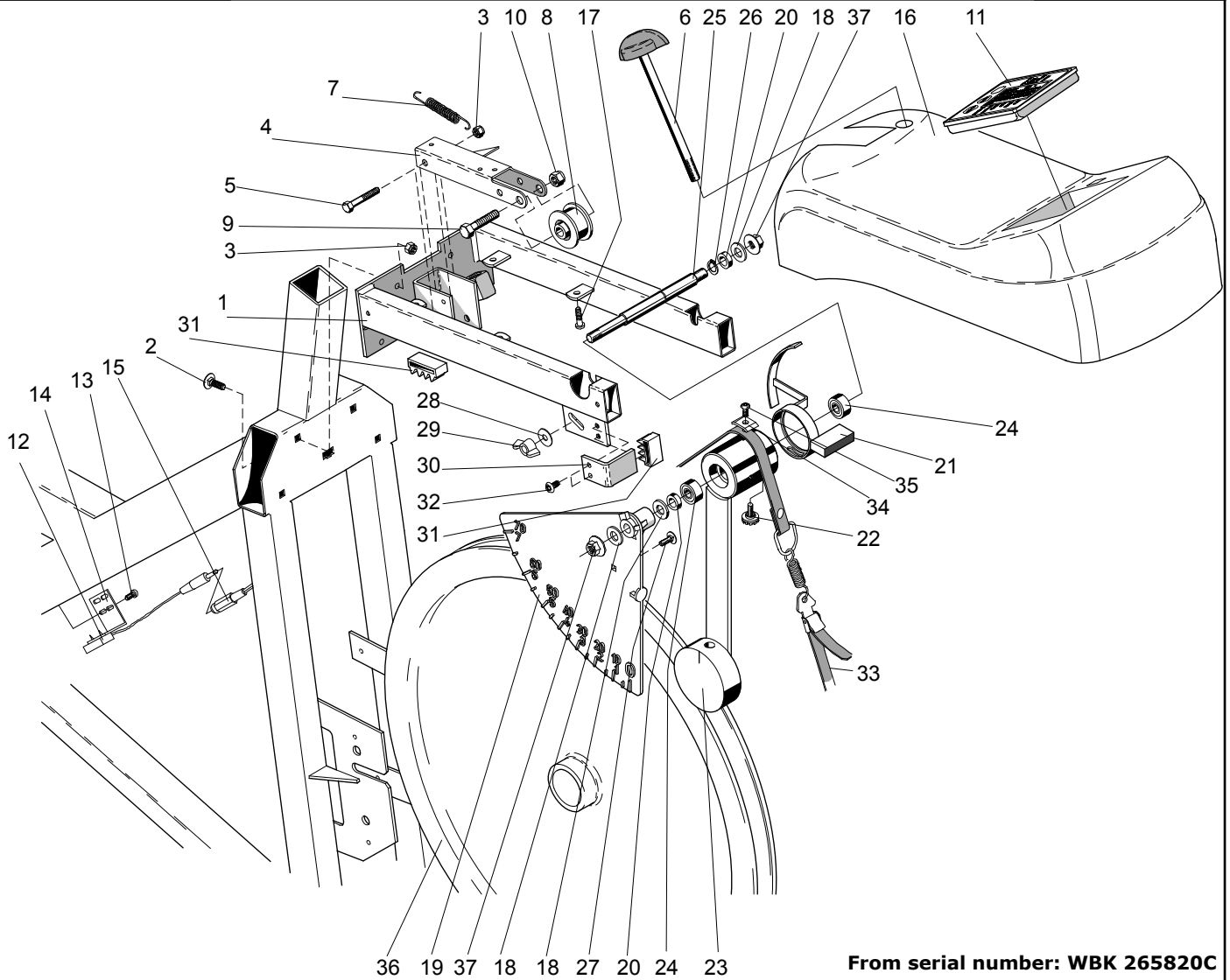


From serial number: WBK 265820C

Pos.	Qty.	Art. No.	Description	Pos.	Qty.	Art. No.	Description
1	1	9301-15	Support tube, front	20	1	9300-115	Bushing for saddle post
2	1	9301-16	Support tube, rear	21	1	9300-123	Top cover
3	4	9328-51	Plastic cap, blue	22	1	9300-280	Handlebar complete
4	4	9328-26	Rubber foot	23	1	9100-180	-Lever M8
5	1	9328-37	Transport wheel compl. (pair)	24	1	9126-72	-Handgrip (pair)
6	4	5845	Locking nut M8	25	1	9300-291	-Expander wedge
7	2	9300-12	Screw MVBF M8x16 mm	26	1	9300-61	Frame cover, left
8	1	9300-55	Chain 1/2" x 1/8", 116 l	27	1	9300-60	Frame cover, right
9	1	9326-164	Magnet	28	4	5673-9	Mounting screw LKT-TT 5x12mm
10	2	8523-2	Dust cover	29	10	9306-12	Plastic plug
11	2	8523-115	Screw M6S 8.8 M8 x 20 FZB	30	1	9301-5	Frame
12	1	9300-430	Steel crank set, complete	31	1	9300-24	Wheel suspension complete set
13	1	9300-220	Pedal, (pair)	32	1	9000-12	-Chain adjuster (pair)
14	1	9300-207	Pedal strap, (pair)	33	1	9106-13	-Sprocket
15	1	8966-175	BB cartridge bearing, complete	34	1	9106-14	-Connection
16	1	9300-138	Saddle post	35	3	91001-6	-Bearing 6001-2z
17	1	9300-122	Locking screw	36	1	9300-18	-Axle
18	1	9300-134	Pressure washer	37	1	9300-17	-Bush, 23 mm
19	1	4994-5	Saddle		1	9339-98	Chestbelt
	1	9300-114	-Saddle bracket		1	9300-365	PC program



From serial number: WBK 265820C

Pos.	Qty.	Art. No.	Description	Pos.	Qty.	Art. No.	Description
1	1	9300-30	Frame for equipment	18	3	5866	Washer
2	4	9300-21	Screw MVBF 6x16 mm		1	9300-36	Meter panel, complete
	4	5863	Washer	19	1	9339-100	-Meter panel
3	5	5843-9	Nut M6	20	2	9000-17	-Spacer
4	1	9300-22	Tension lever	21	1	9300-93	-Meter reader 7 kp
5	1	14333-9	Screw M6x45 mm	22	1	9000-103	-Screw
6	1	9300-25	Tension screw M8, complete	23	1	9300-88	-Weight lever
7	1	9100-20	Spring	24	2	19001-6	-Bearing 6001-2z
8	1	9100-26	Tension cylinder complete	25	1	9300-86	-Axle
9	1	14358	Screw M8x40 mm	26	1	9300-87	-Lock ring SgA 12
10	1	5844	Locking nut M8	27	1	9339-21	Screw
11	1	9300-170	Digital meter	28	1	5862	Washer
	2	2142	Battery 14 x 50 mm	29	1	9000-102	Wing nut
12	1	9326-162	Crank sensor with cable	30	1	9300-94	Stop
	2	9103-40	Screw for crank sensor	31	2	9300-99	Plastic stop
13	1	9126-75	Screw RXS B8 x 9.5 FZB	32	1	5671-9	Screw M5 x 10 mm
14	1	9326-166	Sensor holder	33	1	9103-62	Brake belt, complete
15	1	9326-263	Cable 620 mm	34	1	9300-92	Washer
	5	9300-66	Holder for cable	35	1	5675-9	Mounting screw
16	1	9300-142	Instrument cover	36	1	9300-3	Flywheel
17	4	5768	Mounting screw for cover	37	2	5799	Nut