



## FloorWarm In-Floor Radiant Heat System

## FloorWarm Electrical Requirements

### Proud Member of:



1001 Broken Sound Pkwy NW, Suite A  
 Boca Raton, FL 33487  
 (800) 759-9727  
 www.qepfloorwarm.com

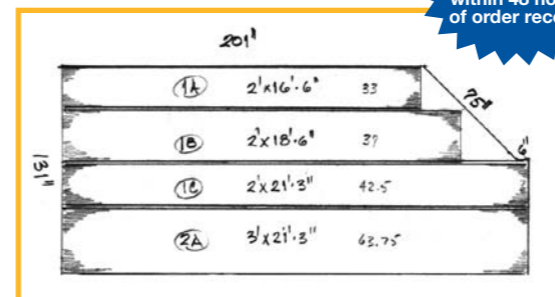
### Distributed by

<b>Description</b>	State-of-the-Art, Thin-Profile, In-Floor Radiant Heat System with AFM® Anti-Fracture Technology designed for use with latex-modified thin-set (3/8" MAXIMUM thickness)
<b>Typical Applications</b>	Residential & Commercial Bathrooms, Entryways, Kitchens, Living Rooms, Bedrooms, Anywhere Warmth & Comfort is desired in your living space
<b>Substrates</b>	Concrete slabs, Plywood, OSB, Gypcrete, Metal
<b>Thickness</b>	Ultra Thin 1/8" Profile for Smooth Room Transitions
<b>Application</b>	Prime Subfloor, Peel & Stick Membrane
<b>Available Kit Sizes</b>	Width: 2 and 3 feet Length: 3, 5, 7, 10 feet; mix and match multi-mat configurations available.  Custom Kits are available upon request for your unique configuration and specification.
<b>Kit Contents</b>	<ul style="list-style-type: none"> <li>• FloorWarm Primer (#6000)</li> <li>• In-Floor Heat Mat (12 watts per sq ft) with pre-wired leads</li> <li>• Programmable Thermostat (Energy Star Rated)</li> <li>• Step-by-Step Installation Instructions.</li> </ul>

- Very Energy-Efficient at only 12 watts per sq ft.
- 120V thermostat handles 15 amps, up to 150 sq ft.
- In-line relay(s) may be added to increase square footage capabilities of each thermostat
- Requires a dedicated 20 amp breaker
- Thermostats include a GFCI (ground fault circuit interrupter)
- Each thermostat requires a dedicated circuit
- Thermostats are rated at 1,800 watts, 120 volts
- Installations with multiple heating elements will require a junction box to gang the connections together. If a junction box is required, locate directly beneath thermostat, 12" - 18" above the floor.
- Connection leads from the heating elements are 12' long minimum and can be cut to desired length to connect at the junction box.
- Thermostat measures both in-floor and ambient air temperatures.



### Sample Multi-Mat Layout



Custom Orders usually ship from Florida factory within 48 hours of order receipt



**State-of-the-Art, Peel & Stick In-Floor Radiant Heating with Built-In Anti-Fracture Protection**

- **Fastest Install** with fast-drying primer, easy Peel & Stick application
- **Tile/Stone can be installed Same Day** — no curing time required
- **AFM® Anti-Fracture Membrane** protects flooring investment by bridging horizontal subfloor cracks up to 3/8", **prevents tile from cracking**
- Can be used as **Primary Heat Source**

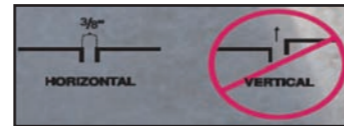


## Welcome to *FloorWarm*

Q.E.P. Co., Inc., founded in 1979, is a world class, world-wide provider of innovative, quality and value-driven flooring and industrial solutions. As a leading worldwide manufacturer, marketer and distributor Q.E.P. delivers a comprehensive line of hardwood flooring, flooring installation tools, adhesives and flooring related products targeted for the professional installer as well as the do-it-yourselfer.



With FloorWarm, we combine our industry-leading AFM® Anti-Fracture Membrane with Radiant Heating to deliver what no other manufacturer can — In-Floor Heating that's heat-efficient, quick and easy to install and ultimately protects the installed thin-set tile, stone, hardwood or laminate flooring from telegraphed slab cracks up to 3/8" wide. All in an ultra-thin 1/8" profile for smooth room transitions to adjacent floor coverings.



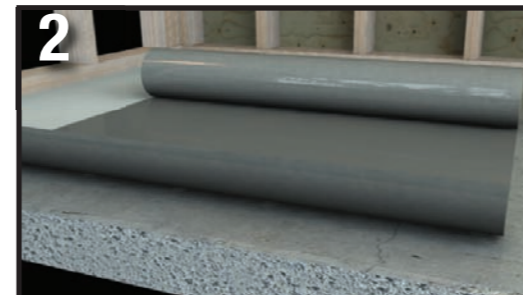
With simple peel & stick installation, the FloorWarm Kits come complete with thermostat, primer, heating mat and installation instructions. The peel & stick heating panel is pre-wired for ease of connection to the thermostat. Utilizes healthy Far Infrared Carbon Technology.

**Save installation time & materials, save money and protect flooring investment with *FloorWarm*.**

## Four Easy Installation Steps



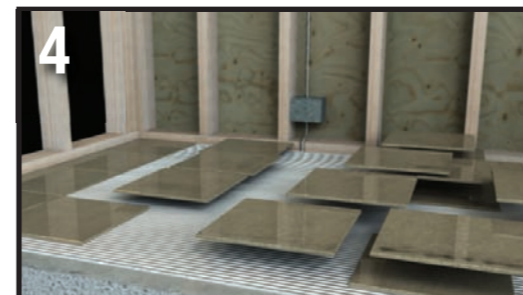
**1**  
Roll on FloorWarm #6000 Primer, allow 20-30 minutes to dry.



**2**  
Apply FloorWarm

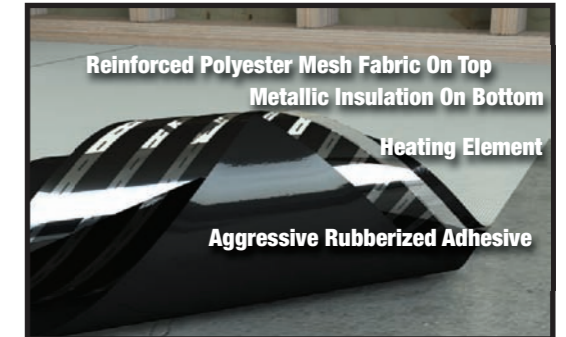


**3**  
FloorWarm is wired to a junction box.



**4**  
Install tile

## Features & Benefits



Programmable thermostat with built-in GFCI



## Reduce Labor & Materials Costs and Increase Profits with *FloorWarm*

- Easy to Install Peel & Stick Installation
- Pre-Wired panels for ease of connection
- Install tile/stone same day — no curing time, no crew down-time
- Ultra-thin 1/8" profile for Smooth Transitions
- Anti-Fracture Protection reduces callbacks
- Works with tile, stone, hardwood and laminate floors
- Available in standard-sized mat kits or Custom layouts
- Can be used as Primary Heat Source — save HVAC materials & labor
- Made with UL-Recognized components \*
- For full crack-isolation coverage, contact QEP for installation guidelines

**FULL 5-YEAR WARRANTY**