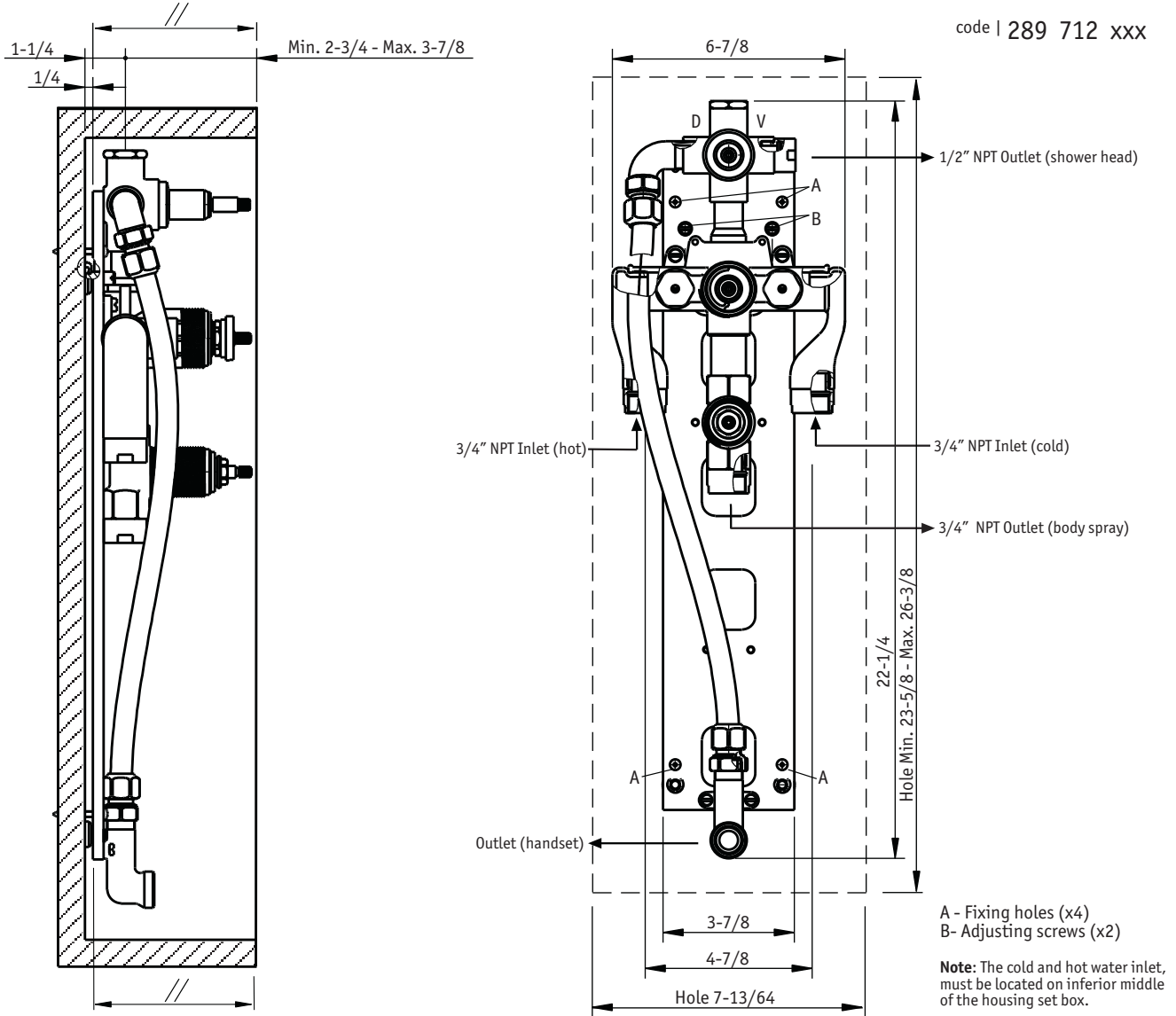


TECHNICAL SPECIFICATIONS

3/4" Thermostatic rough with integral volume control and diverter

code | 289 712 xxx



Before starting the installation

Prepare necessary space for its application. Open a rectangular hole in the wall with a minimum of 23-5/8 inches and maximum 26-3/8 inches height, 7-1/4 inches width and depth between 5-1/8 inches and 4 inches. See drawing on first page.

Very important: the depth of the stringer (cross brace) must be parallel to the wall.

Rough installation

Apply the thermostatic set on the stringer (cross brace) and mark the holes for the fixing screws (identified as letter A on drawing).

Verify by measuring the distance between the fixing plate and the finished wall, on upper and lower side. The difference should not be greater than 1/8 inches. If that difference is greater use the adjusting screws to reduce it (identified with letter B on drawing).

The handset outlet is located on the lower part of the set. The 1/2" outlet for the shower head is on the diverter valve (right side), on the upper right of the rough. The outlet for body sprays is on volume control valve, on the lower side of the rough.

5663806
983XX124W00

PLUMBING

dimensions inches



CIFIAL USA

USA P +1800 5284904 F +1800 5281969 info@cifialusa.com www.cifialusa.com

CIFIAL Torneiras, S.A.

Portugal T +351 256 780 700 F +351 256 780 710 cifial@cifial.pt www.cifial.pt

CIFIALDECOR, S.A.

Espanha T +34 916 110 261 F +34 916 103 694 cifialdecor@infonegocio.com

CIFIAL UK, Ltd.

UK P +44 1933 402 008 F +44 1933 402 063 sales@cifial.co.uk www.cifial.co.uk