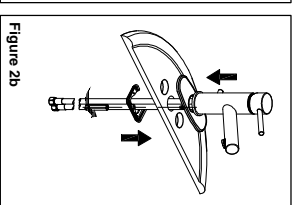
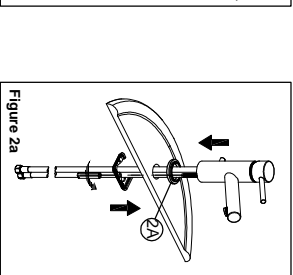
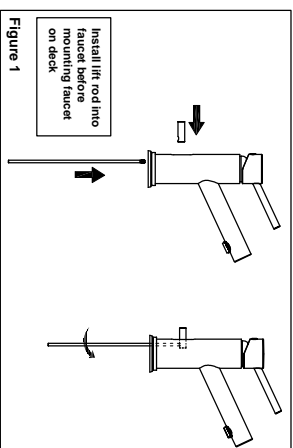


## Faucet Installation Instructions

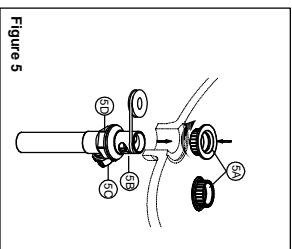
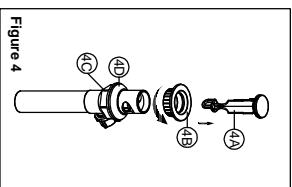
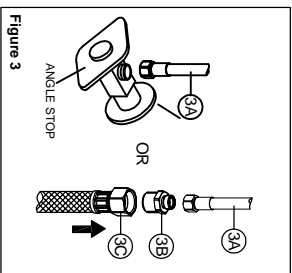
LL102-PC

- Hole Diameters are 1  $\frac{3}{16}$ " minimum to 1  $\frac{1}{2}$ " (without escutcheon) or 1  $\frac{3}{4}$ " (with escutcheon) maximum
- Maximum deck thickness is 2  $\frac{3}{8}$ " (without escutcheon) or 2  $\frac{1}{8}$ " (with escutcheon)
- This faucet comes completely assembled and water tested
- Includes braided stainless steel supply lines with 3/8" OD Inlets and 1/2" IPS adapters (for use only when needed)
- Tools required-channel lock pliers (or pipe wrench), basin wrench, small crescent wrench and Teflon tape
- Shut off water supply prior to beginning installation



**Step 1 Install Pop-up Rod**  
Push lift rod through hole in bottom of body then reattach lift rod knob.

**Step 2a Single Hole Mounting**  
Insert faucet through sink with flange (2A) above the sink. From underneath slide on washer and secure faucet by tightening nut.  
**Step 2b Three Hole Mounting**  
Follow step 2a including deck plate between flange and sink.



**Step 3**  
Connect hot and cold faucet supply lines (3A) directly to the angle stops. Or attach included 1/2" IPS adapters (3B) to faucet supplies and connect to 1/2" IPS water lines (3C, not included). Use wrenches to tighten connections. Do not overtighten.

**Step 4**  
Install Pop-up Assembly. Remove stopper (4A) and flange (4B). Screw nut (4C) all the way down. Push gasket (4D) down.

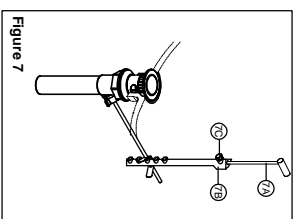
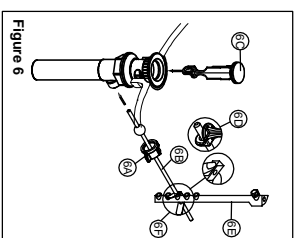
**Step 5**  
Apply silicone sealant or plumber's putty to the underside of flange (5A). Apply flange (4B). Screw nut (5B) into sink. Screw flange onto body. Pivot hole (5C) must face the back of the sink. Tighten nut (5D), do not overtighten. Clean excess silicone sealant or putty.

# Giagmi

For additional assistance or service call: 1-888-560-5222 USA 8:30 a.m. to 5:30 p.m. EST Monday-Friday

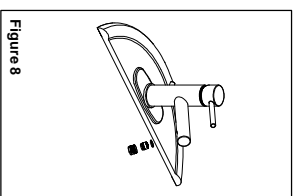
## Faucet Installation Instructions

LL102-PC

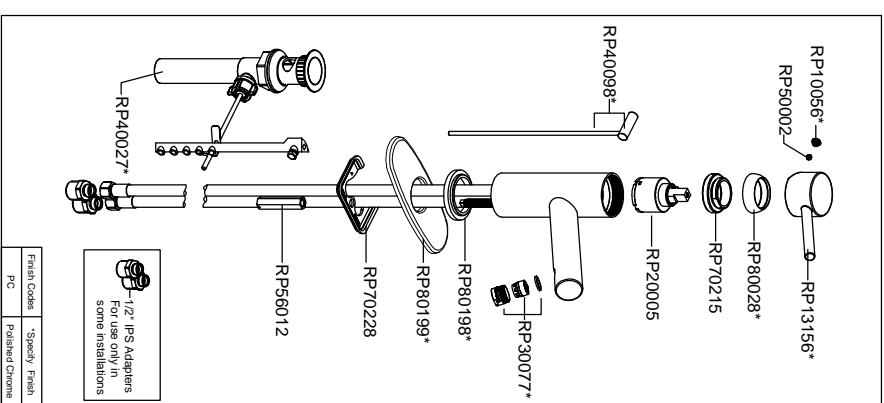


**Step 6**  
Remove pivot nut (6A). Install horizontal rod (6B) and stopper (6C) as non-removable (6D). Hand tighten pivot nut (6A). Attach horizontal rod to strap (6E) using clip (6F).

**Step 7**  
Insert lift rod (7A) into strap (7B) and tighten screw (7C).



**Step 8**  
Important: After installation is complete remove aerator and turn faucet on for two minutes to flush out any debris from the water lines. While water is running check for leaks. Replace aerator.



**Maintenance:** Clean with warm water, soft cotton cloth and non-abrasive liquid dish soap. Towel dry. Never use acids, harsh abrasives or detergents.

# Giagmi

For additional assistance or service call: 1-888-560-5222 USA 8:30 a.m. to 5:30 p.m. EST Monday-Friday