

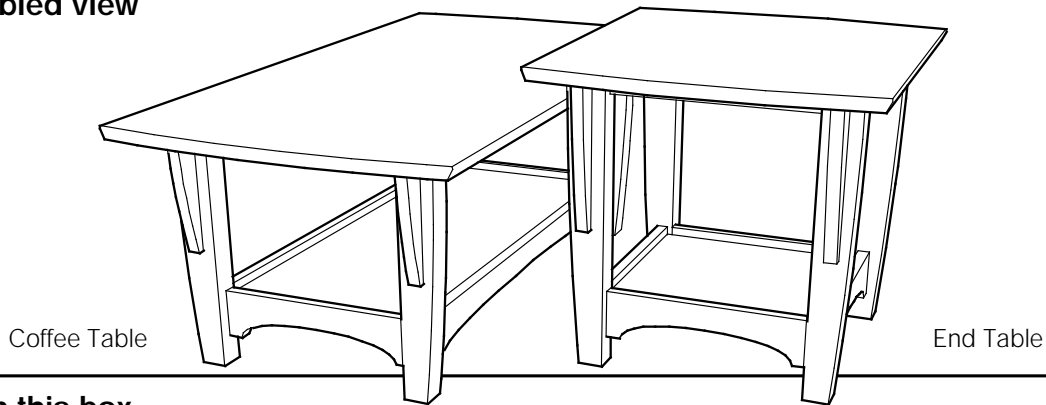
# Assembly Instructions

# FUTON ACCESSORIES EVENING TABLE

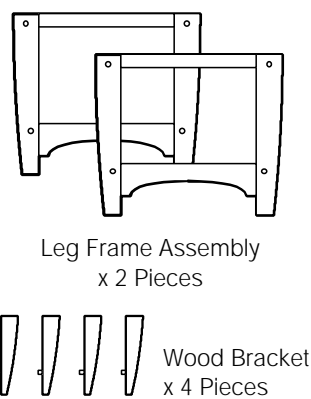
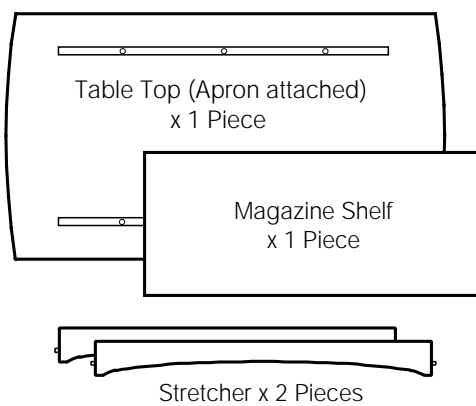
This instruction shows Coffee Table assembly. Procedure is the same for both sizes.

N&D-0301

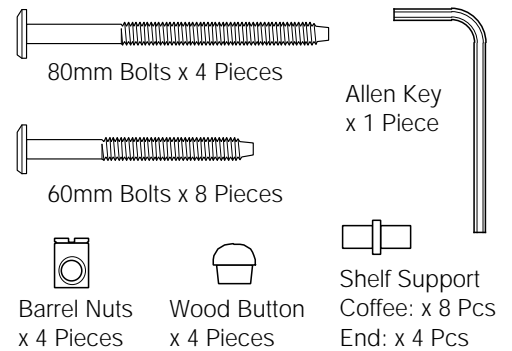
## 1 Assembled view



## 2 Parts in this box



### Hardware in this box:

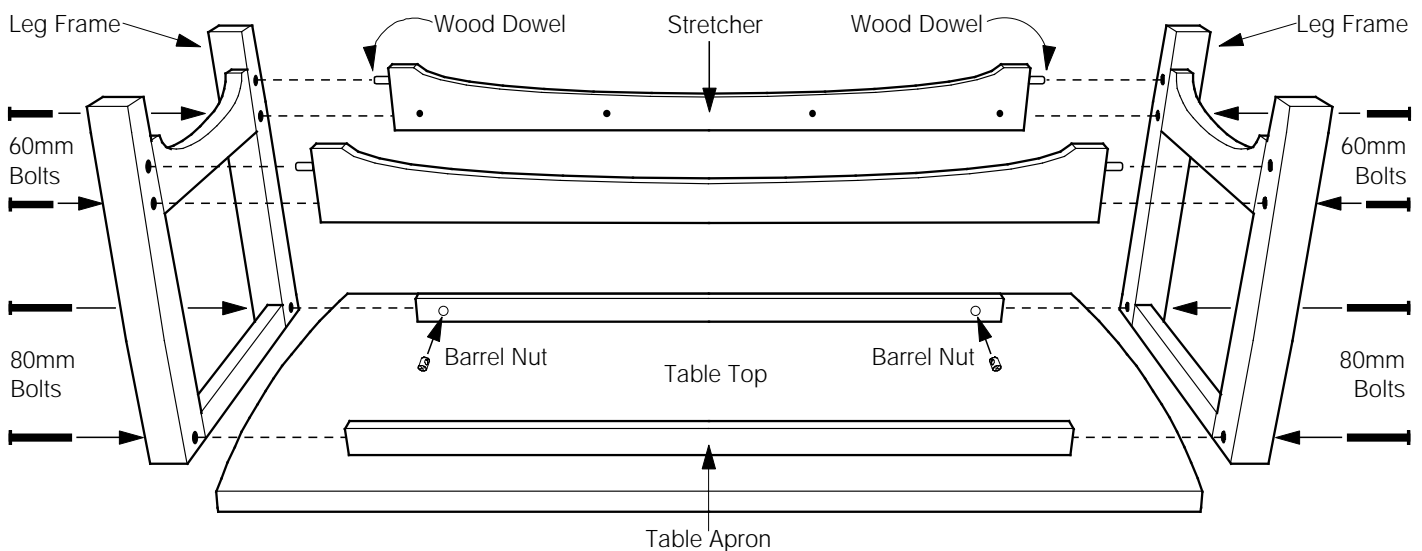


## 3 Assembly Procedure

1. Turn the Table Top upside down as shown on diagram. Be sure that the Table Top is laying on a flat smooth surface.
2. Attach the Leg Frames to the Apron using the Bolts and Barrel nuts as shown below. - LEAVE BOLTS VERY LOOSE!
3. When all parts are assembled, gently tighten all the Bolts.

### Helpful Tips: Fastening of Bolts

- ✓ Check that all holes are free of wood chips and sawdust.
- ✓ A screwdriver will help in aligning the Barrel Nut hole with the Bolt.
- ✓ Screw the Bolt in gently to avoid stripping the threads.

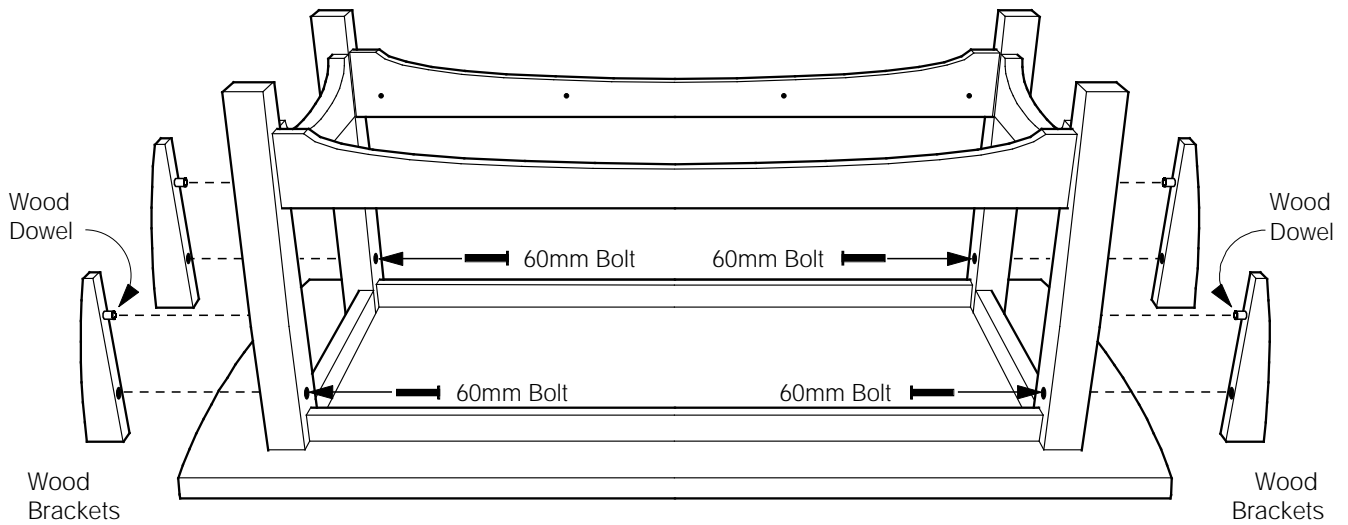


FUTON ACCESSORIES  
**EVENING TABLE**

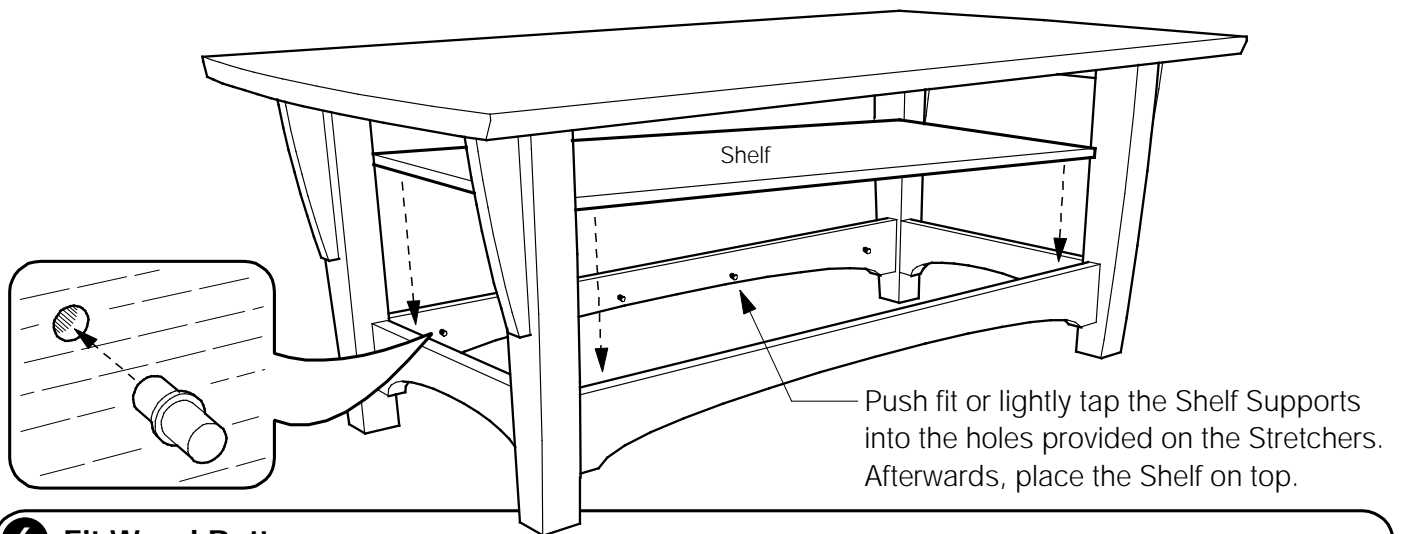
This instruction shows  
Coffee Table assembly.  
Procedure is the same  
for both sizes.

N&D-0301

**4** Fit Wood Brackets to Legs



**5** Fit Shelf Supports and place the Shelf on top



**6** Fit Wood Buttons

