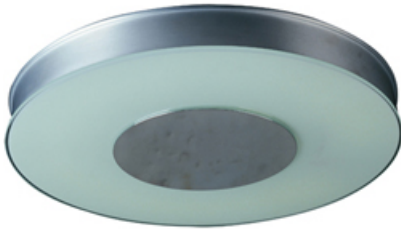




Product Specifications for E22011-09

Job Name:	Job Type:
Quantity:	Comments:



**E22011-09**  
**Vision 1-Light Flush Mount**

**Finish**  
Satin Nickel

**Glass/Shade**  
Frost White

**Product Category**  
Wall Sconce

**Lamping**

Number of Bulb(s)	1
Light Type	Fluorescent
Bulb Type	2GX13 T5 Circline
Max Bulb Wattage	40
Max Fixture Wattage	40
Rated Life	±12,000 Hours
Rated Lumens	±3,200
Color Temp	±3,000 K
Bulb(s) Included	Yes
Light Up/Down	N/A
Beam Spread	N/A
CRI	N/A
Photo Cell Included	N/A
Ballast/Driver/Transformer	Yes
Dimmable	No

**Measurements**

Width	14.50"
Height	14.50"
Length	N/A
Extension	2.00"
Back Plate Width	N/A
Back Plate Height	N/A
HCO	7.25"
Min Overall Height	N/A
Max Overall Height	N/A
Hanging Weight	4.84 lb(s)
Height Adjustable	N/A
Slope	N/A
Chain Length	N/A
Wire Length	N/A
Canopy Width	N/A
Canopy Height	N/A
Canopy Length	N/A

**Shipping**

Carton Weight	6.16 lb(s)
Carton Width	4.33"
Carton Height	17.00"
Carton Length	17.00"
Carton Cubic Feet	N/A
Master Pack	4
Master Pack Weight	28.60 lb(s)
Master Pack Width	17.52"
Master Pack Height	17.72"
Master Pack Length	18.50"
Master Cubic Feet	N/A
UPS Shippable	Yes

**Certification**

Safety Rating	Dry
Energy Star	No
CA Title 24	No
CA Title 20	No
ADA	Yes

**Other**

UPC Code	845094002390
Material	N/A

**Equivalents**

Incandescent Watts	291
Fluorescent Watts	N/A

ET2 Contemporary Lighting and all designs, logos and images © 2013 ET2 Contemporary Lighting. All Rights Reserved. ET2 Contemporary Lighting reserves the right, at any time, to make changes in the design and/or construction of the product including the discontinuation of product without prior notice. Color may vary from what is pictured above due to limitations inherent to photographic processes. Always consult a qualified, licensed electrician before installation of any product weighing 35 pounds or more. We recommend that a qualified, licensed electrician do the installation. Always install to a mechanically sound structure.