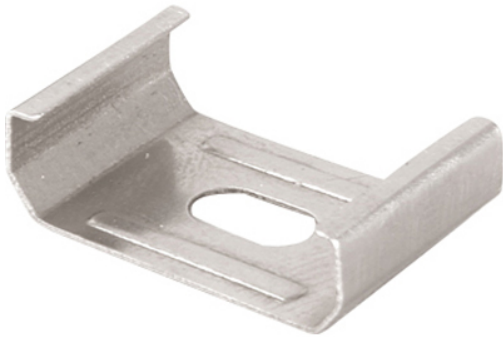




Product Specifications for E53354

Job Name:	Job Type:
Quantity:	Comments:



E53354

StarStrand Channel Flat Mounting Clips (4/PK)

Mysteriously illuminating from above, below, or within, StarStrip discreetly goes where no light has gone before, even under water. Unthinkably thin strips of LEDs adhere to surfaces unfit for traditional fixtures, bathing the most unusual places with dimmable warm white light or a remote-controlled rainbow of vibrant colors for a virtually undetectable, surprisingly unpredictable effect.

Finish

Glass/Shade

Product Category

LED Tape Accessory

Lamping

Number of Bulb(s)	N/A
Light Type	N/A
Bulb Type	
Max Bulb Wattage	N/A
Max Fixture Wattage	
Rated Life	N/A
Rated Lumens	±0
Color Temp	N/A
Bulb(s) Included	No
Light Up/Down	N/A
Beam Spread	N/A
CRI	N/A
Photo Cell Included	N/A
Ballast	N/A

Measurements

Width	N/A
Height	N/A
Length	N/A
Extension	N/A
Back Plate Width	N/A
Back Plate Height	N/A
HCO	N/A
Min Overall Height	N/A
Max Overall Height	N/A
Hanging Weight	N/A
Height Adjustable	N/A
Slope	N/A

Shipping

Carton Weight	N/A
Carton Width	3.00"
Carton Height	2.50"
Carton Length	6.00"
Carton Cubic Feet	N/A
Master Pack	1
Master Pack Weight	N/A
Master Pack Width	N/A
Master Pack Height	N/A
Master Pack Length	N/A
Master Cubic Feet	N/A
UPS Shippable	Yes

Certification

UL/ETL/CSA	DRY
Energy Star	No
CA Title 24	No
CA Title 20	No
ADA	No

Other

UPC Code	845094037897
Material	N/A

Equivalents

Incandescent Watts	N/A
Fluorescent Watts	N/A

ET2 Contemporary Lighting and all designs, logos and images © 2010 ET2 Contemporary Lighting. All Rights Reserved. ET2 Contemporary Lighting reserves the right, at any time, to make changes in the design and/or construction of the product including the discontinuation of product without prior notice. Products are subject to revision in design and/or construction to conform to changes in UL and/or CSA and/or ETL standards, or that which may be required by law or availability of material. ET2 Contemporary Lighting products are UL, ETL or CSA approved. Color may vary from what is pictured above due to limitations inherent to photographic processes. Always consult a qualified, licensed electrician before installation of any product weighing 35 pounds or more. We recommend that a qualified, licensed electrician do the installation. Always install to a mechanically sound structure.