

ASSEMBLY GUIDE

Model : 5351-24TS

We suggest that you spend a short time reading through this leaflet and then follow the simple step by step instructions.

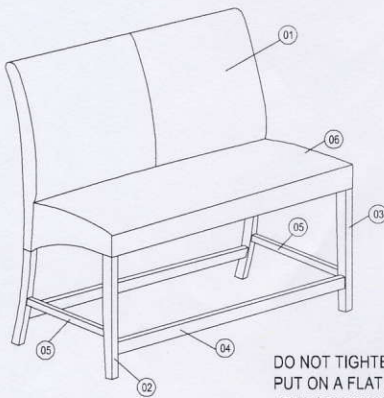
Do not throw away any of the packaging until you have checked that you have all the component parts and fittings.

Please dispose of the packaging carefully once you have finished.

HARDWARE LIST

| NO | DESCRIPTION | QTY |
|----|--|-----|
| A | JCBC SCREW 90mm  | 4 |
| B | JCBC SCREW 55mm  | 6 |
| C | FLAT WASHER  | 10 |
| D | SPRING WASHER  | 10 |
| E | SCREW M4 X 38mm  | 6 |
| F | SHORT ALLEN KEY M4  | 1 |

- PART
- 01 BACK FRAME
 - 02 LEFT LEG
 - 03 RIGHT LEG
 - 04 FRONT STRETCHER
 - 05 SIDE STRETCHER
 - 06 CUSHION SEAT

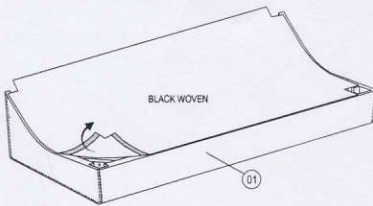


*** NOTE ***

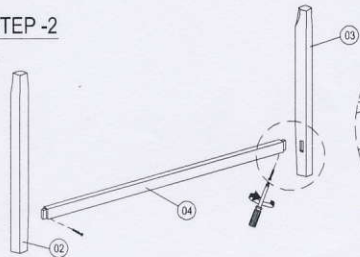
DO NOT TIGHTEN ALL THE SCREWS UNTIL THE CHAIR HAS BEEN PUT ON A FLAT SURFACE TO ADJUST & LEVEL ALL THE LEGS SO THAT THEY DO NOT WOBBLE ONCE ADJUSTED THEN TIGHTEN ALL THE SCREWS.

STEP -1

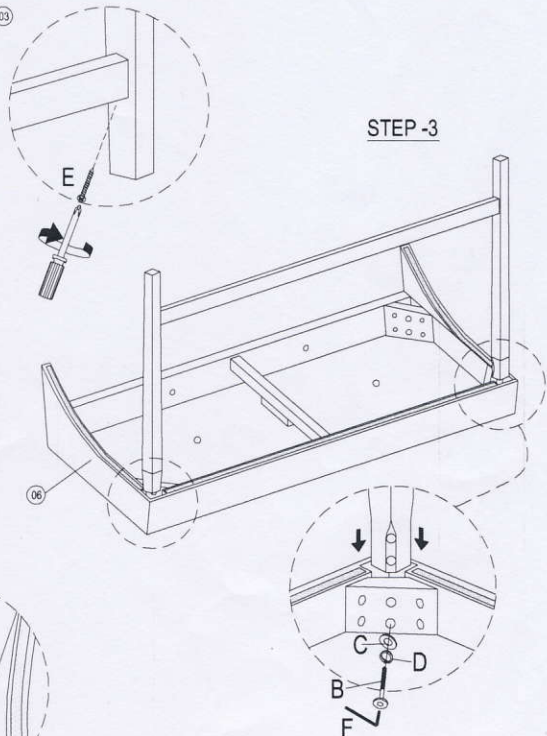
Remove the Black woven on bottom of the box seat.



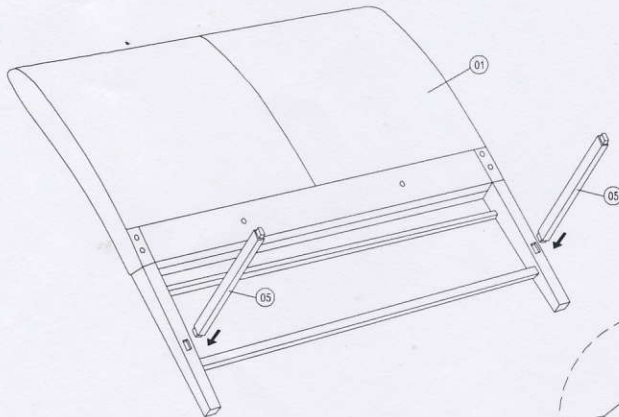
STEP -2



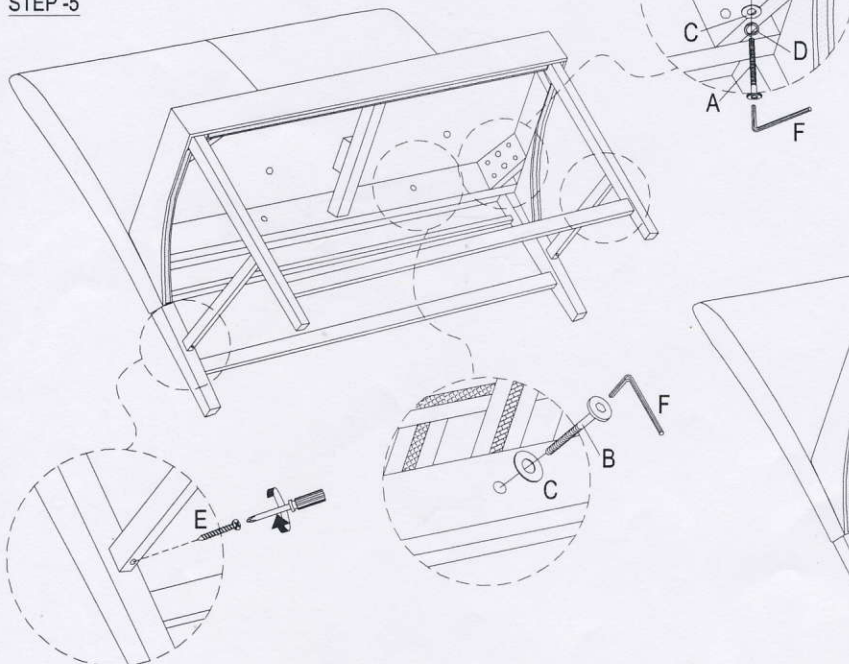
STEP -3



STEP -4



STEP -5



STEP -6

Lastly, cover back the black woven to the bottom of the box seat.

