

IMPORTANT NOTICE

Should another PET CHIME™ PET PAW™ nearby activate your chime, you can set your own ringing code by disconnecting a wire in both the remote control and the chime. The PET PAW™ has a RED and GREEN wire in the battery case. Likewise, the chime has RED and GREEN wire in selection recess. To set your own ringing code, simply cut either the RED wires on both units or the GREEN wires on both units.

WARNING: If you cut one RED and one GREEN or all FOUR (4) wires, you will disable the whole unit.

This device complies with part 15 of the FCC rules. Operation is subject to the following two conditions: 1) This device may not cause harmful interference and 2) This device must accept any interference received, including interference that may cause undesired operation.

Changes or modifications not expressly approved by the party responsible for compliance could void the users authority to operate the equipment.

WARRANTY

This KOOLATRON product is warranted to the retail customer for 90 days from date of retail purchase, against defects in material and workmanship.

WHAT IS COVERED

- Replacement parts and labour.
- Transportation charges to customer for the repaired product.

WHAT IS NOT COVERED

- Damage caused by abuse, accident, misuse, or neglect.
- Transportation of the unit or component from the customer to Koolatron.

IMPLIED WARRANTIES

Any implied warranties, including the implied warranty of merchantability are also limited to the duration of 90 days from the date of retail purchase.

WARRANTY REGISTRATION

Register on-line at www.koolatron.com AND keep the original, dated, sales receipt with this manual.

WARRANTY AND SERVICE PROCEDURE

If you have a problem with your unit, please telephone the following number for assistance: **North America 1-800-265-8456**

Koolatron has Master Service Centres at these locations:

Koolatron U.S.A.	Koolatron Canada
4330 Commerce Dr.	27 Catharine Ave.
Batavia, NY 14020-4102	Brantford, ON N3T 1X5
U.S.A.	Canada

A Koolatron Master Service Centre must perform all warranty work.



www.koolatron.com
1-800-265-8456

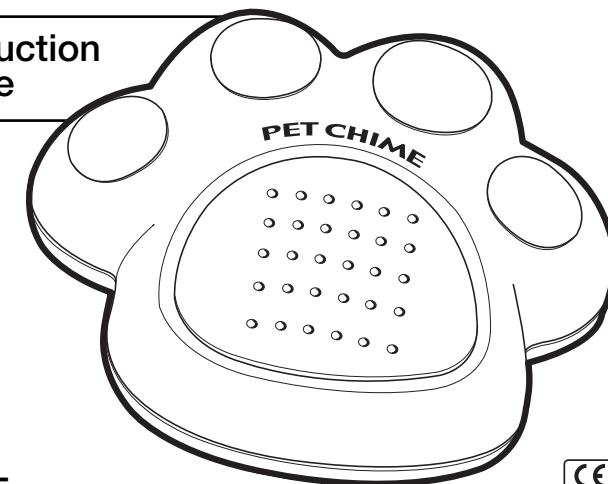
©2011 Koolatron. All rights reserved.
All specifications are subject to change without notice.



PORTABLE WIRELESS ELECTRONIC PET DOORBELL

For Use With the Koolatron Pet Chime

instruction
guide



PP-05



CONTENTS

The **PET PAW™** consists of the following unit:

Pet Paw™

- Easy battery replacement
- Operates on one 9V battery (not included)

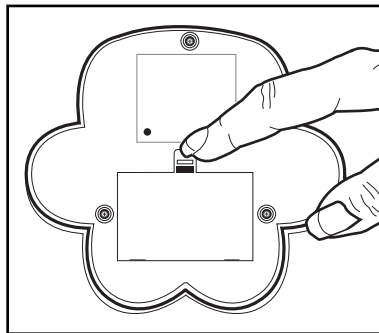


For use as an additional paw for your
Koolatron Pet Chime Wireless Electronic Pet Doorbell!

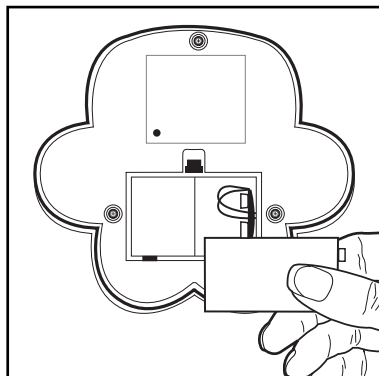
INSTALLATION AND OPERATION INSTRUCTIONS

PET PAW™:

1. To remove battery compartment cover, pinch rear clasp to release.



2. Insert one 9-V battery. Reattach compartment cover.



3. If your Pet Paw will not activate your Pet Chime, use a small screwdriver to fine tune the sensitivity by turning within 1mm clockwise or counter-clockwise while pressing the Paw repeatedly until you hear that the Pet Chime is activated. (see diagram below).

