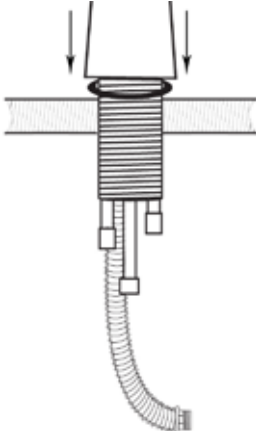
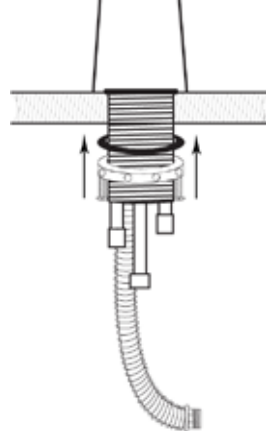


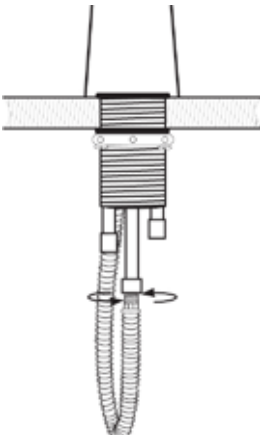
## Installation



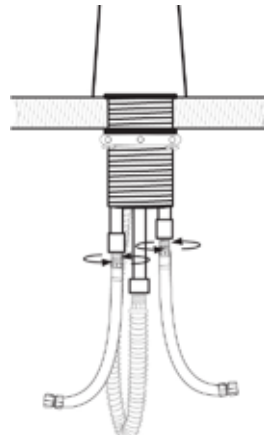
1. Place the new faucet in position through the faucet hole of the sink.



2. From under the sink, attach the plastic rings onto the faucet base, followed by the lock nut. Then tighten the two screws on the lock nut to secure the faucet body in place.



3. Screw the spray hose to the spray hose pipe.



4. Attach the male ends of the flexible hoses to the hot and cold brass pipes on the faucet body. Then connect the female ends of the flexible hose to the corresponding hot & cold water supply.

## Trouble-Shooting Guide

Issue	Cause	Solution
The water will not completely turn off.	There is a dirty, worn out, or damaged washer in the cartridge.	Check to see if the ceramic disc is dirty or damaged by removing the handle and the cartridge.
Water is leaking from under the handle.	The adjusting ring or cap has become loose.	Tighten the adjusting ring or cap.
The aerotaor is leaking or has an inconsistant water flow pattern.	The aerotaor does not fit correctly or has become dirty.	Check the rubber packaging of the aerotaor or replace it.