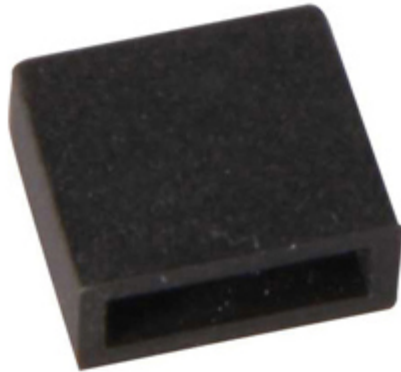




Product Specifications - 53269

Job Name:	Job Type:
Quantity:	Comments:



53269

StarStrand 4-Pin Silicone End Cap (10/PK)

Mysteriously illuminating from above, below, or within, StarStrip discreetly goes where no light has gone before, even under water. Unthinkably thin strips of LEDs adhere to surfaces unfit for traditional fixtures, bathing the most unusual places with dimmable warm white light or a remote-controlled rainbow of vibrant colors for a virtually undetectable, surprisingly unpredictable effect.

Package of 10

Finish

Lamping

Number of Bulbs	
Light Type	
Bulb Type	
Max Bulb Wattage	
Max Fixture Wattage	
Rated Life	
Rated Lumens	
Color Temp	
Bulb(s) Included	No
Light Up/Down	N/A
Beam Spread	N/A
CRI	N/A
Photo Cell Included	N/A
Ballast	N/A

Glass/Shade

Measurements

Width	0.0"
Height	0.0"
Length	0.0"
Extension	0"
Back Plate Width	N/A
Back Plate Height	N/A
HCO	N/A
Min Overall Height	N/A
Max Overall Height	N/A
Hanging Weight	N/A
Height Adjustable	N/A
Slope	N/A

Product Category

LED Tape Accessory

Shipping

Carton Weight	N/A
Carton Width	4"
Carton Height	2"
Carton Length	7"
Carton Cubic Feet	0.04
Master Pack	1
Master Pack Weight	N/A
Master Pack Width	N/A
Master Pack Height	N/A
Master Pack Length	N/A
Master Cubic Feet	N/A
UPS Shippable	Yes

Certification

UL/ETL/CSA	
Energy Star	No
CA Title 24	No
CA Title 20	No
ADA	No

Other

UPC Code	783209069367
Shades Included	N/A
Crystals Included	N/A
Diffuser Included	N/A
Conversion Kit	N/A
Material	N/A

Equivalents

Incandescent Watts	N/A
Fluorescent Watts	N/A

Maxim Lighting International and all designs, logos and images © 2010 Maxim Lighting International. All Rights Reserved. Maxim Lighting International reserves the right, at any time, to make changes in the design and/or construction of the product including the discontinuation of product without prior notice. Products are subject to revision in design and/or construction to conform to changes in UL and/or CSA and/or ETL standards, or that which may be required by law or availability of material.

Maxim Lighting International products are UL, ETL or CSA approved.

Color may vary from what is pictured above due to limitations inherent to photographic processes.

Always consult a qualified, licensed electrician before installation of any product weighing 35 pounds or more. We recommend that a qualified, licensed electrician do the installation. Always install to a mechanically sound structure.