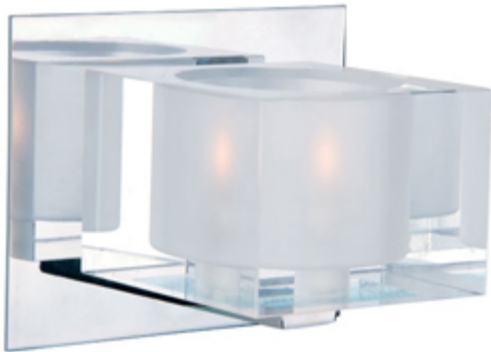




Product Specifications - 10001CLPC

Job Name:	Job Type:
Quantity:	Comments:



10001CLPC

Cubic 1-Light Bath Vanity

Cubic collection's bold Clear crystal cubes are mounted on a solid metal frame finished in a mirror-like Polished Chrome. The inside of the crystal cubes are frosted to nicely diffuse the natural light created from the included xenon bulbs.

Finish
Polished Chrome

Glass/Shade
Clear

Product Category
Bath Vanity

Lamping

Number of Bulbs	1
Light Type	Xenon
Bulb Type	G9 T4
Max Bulb Wattage	60
Max Fixture Wattage	60
Rated Life	±2,000 Hours
Rated Lumens	±800
Color Temp	±2,900 K
Bulb(s) Included	Yes
Light Up/Down	N/A
Beam Spread	N/A
CRI	N/A
Photo Cell Included	N/A
Ballast	N/A

Measurements

Width	5.8"
Height	4.8"
Length	N/A
Extension	6"
Back Plate Width	N/A
Back Plate Height	N/A
HCO	N/A
Min Overall Height	N/A
Max Overall Height	N/A
Hanging Weight	
Height Adjustable	N/A
Slope	N/A

Shipping

Carton Weight	
Carton Width	0"
Carton Height	0"
Carton Length	0"
Carton Cubic Feet	N/A
Master Pack	1
Master Pack Weight	N/A
Master Pack Width	N/A
Master Pack Height	N/A
Master Pack Length	N/A
Master Cubic Feet	N/A
UPS Shippable	Yes

Certification

UL/ETL/CSA	Damp
Energy Star	No
CA Title 24	No
CA Title 20	No
ADA	No

Other

UPC Code	783209084193
Shades Included	N/A
Crystals Included	N/A
Diffuser Included	N/A
Conversion Kit	N/A
Material	N/A

Equivalents

Incandescent Watts	N/A
Fluorescent Watts	N/A

Maxim Lighting International and all designs, logos and images © 2010 Maxim Lighting International. All Rights Reserved. Maxim Lighting International reserves the right, at any time, to make changes in the design and/or construction of the product including the discontinuation of product without prior notice. Products are subject to revision in design and/or construction to conform to changes in UL and/or CSA and/or ETL standards, or that which may be required by law or availability of material.

Maxim Lighting International products are UL, ETL or CSA approved.

Color may vary from what is pictured above due to limitations inherent to photographic processes.

Always consult a qualified, licensed electrician before installation of any product weighing 35 pounds or more. We recommend that a qualified, licensed electrician do the installation. Always install to a mechanically sound structure.