

# Ranger® 250 GXT

## Processes

Stick, TIG, MIG, Flux-Cored,  
Gouging

## Product Number

K2382-4

K2382-5

See inside for complete specs

## Output Range

50-250A AC/DC 14-28V CV Welding  
11,000 Watts Peak AC Generator  
10,000 Watts Continuous AC Generator

## Rated Output - Current/Voltage/Duty Cycle

250A AC/DC CC/25V/100%  
250A DC CV/25V/100%

## Number of Cylinders

2

## HP @ Speed (RPM)

23 @ 3,600 RPM

## Weight/Dimensions (H x W x D)

602 lbs. (273 kg)

29.9 x 21.5 x 42.3 in.

(759 x 546 x 1074 mm)

36.2 in. (920 mm) To Top of Exhaust Tube

## XTra Performance! XTra Power! XTra Protection!

Get all of the XTras needed for construction and maintenance work. That's XTra welding performance with 250 amps for AC or DC stick and DC wire welding and XTra power with up to 11,000 watts peak for lights, grinders or high amperage equipment. You also get XTra protection and quiet operation with the Lincoln enclosed case.

### FEATURES

#### ▶ Totally Enclosed Case

- Engine is fully protected.
- 3 service access doors.
- Low Noise – 76.4 dBA sound level at 23 ft. (7 m). 100.7 dB sound power (Lwa) at rated output.
- Choose from painted or stainless steel roof, case sides and engine doors.

#### ▶ Versatile AC/DC Welding

- AC/DC welding output for a broad range of stick electrode types.
- Excellent AC TIG welding with optional TIG Module and either a foot or hand Amptrol™ for aluminum and other alloy welding.
- MIG and flux-cored capable (with optional equipment).
- Remote ready! 6-pin connector and local/remote switch for remote control operation.

#### ▶ 11,000 Watts Peak Single-Phase AC Generator Power

- Peak for motor starting.
- 10,000 watts continuous power for generator, plasma cutter or inverter welder.
- Lights, grinder, power tools.

### APPLICATIONS

- ▶ Construction
- ▶ Maintenance and Repair
- ▶ Ranch/Farm



### FEATURES, CONT'D.

#### ▶ 23 HP Kohler® Gasoline Engine

- 2 cylinder, 4 cycle overhead valve air-cooled design.
- Electric fuel pump avoids vapor lock.
- Oil drain extension for easy oil changes.
- 12 gallon tank for extended run times.
- Electric fuel gauge located on control panel makes it easy to check the fuel level during operation and refueling.

#### ▶ Rugged Reliability

- Welding and AC Generator Outputs Rated at 104°F (40°C).

### INPUT



### OUTPUT



Powered By:

**KOHLER**



Two Year Extended  
Warranty Available  
in U.S.A. and Canada



THE LINCOLN ELECTRIC COMPANY

22801 St. Clair Avenue • Cleveland, OH • 44117-1199 • U.S.A.  
PH: +1.216-481-8100 • www.lincolnelectric.com

**LINCOLN**  
**ELECTRIC**  
THE WELDING EXPERTS®

**Arc Performance**

- XTra Performance! Rated 250 amps/25 volts for AC, DC and CV. All rated outputs at 100% duty cycle 104°F (40°C).
- AC/DC welding output for a broad range of stick electrodes, such as Lincoln Excalibur® 7018 (AWS E7018) and Fleetweld® 5P+ (AWS E6010). Also capable of MIG, flux-cored, and TIG welding.
- Choose DC(+) for a deep penetrating arc or DC(-) for less penetration on thin sheet metal. Select AC for general purpose welding and excellent aluminum TIG welding.



- Simple Output Range Selector can be used to select one of four amperage ranges with generous overlap for Stick/TIG welding, or two wire feed welding ranges.
- Fine adjustment control allows you to dial in just the right welding output for each application.
- Add productivity with self-shielded flux-cored CV wire welding. Compatible with Lincoln LN-25 PRO wire feeder for use with a variety of wire electrodes.
- Arc gouge with up to 3/16 in. (4.8 mm) carbon electrode.

**AC Generator Performance**

- XTra Power! 11,000 watts peak AC generator power. Use peak power for motor starting.
- XTra Power! 10,000 watts continuous AC generator power – Most continuous power in its class. Designed for high capacity needs such as a back-up generator, powering a plasma cutter or an Invertec® inverter welder. Use also for lights, a grinder or other power tools.
- Delivers up to 42 amps from the single 120V/240V full-KVA receptacle. Standard circuit breakers protect the machine as well as your power tools.
- Delivers up to 40 amps from two 120V duplex receptacles.
- Get two tools in one when you use the Ranger® 250 GXT as a power generator for emergency standby power, and/or for welding.
- Optional GFCI (Ground Fault Circuit Interrupter) Kit available for additional protection from electrical shock.
- Simultaneous welding and AC auxiliary power — power up to 5,100 watts while welding at 180 amps (AC auxiliary power is reduced when welding simultaneously per table below).

<b>SIMULTANEOUS WELDING AND POWER LOADS</b>	
<b>Welding Output (Amps)</b>	<b>Continuous Power (Watts)</b>
0	10,000
80	8,700
130	7,200
180	5,100
250	0

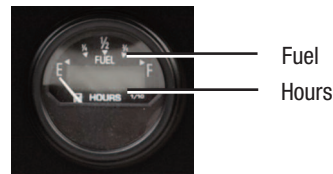
**FEATURES**

- XTra Protection! Engine door provides machine protection and easy service access.
- Kohler® Command® 23 HP CH23S OHV Gasoline Engine.
- Noise at rated load:
  - 100.7 dB sound power (Lwa)
  - 76.4 dBA sound level at 23 ft. (7 m)
- Remote ready! 6-pin connector and local/remote switch for remote control operation. Also for AC/DC TIG Module use with foot or hand Amptrol™.



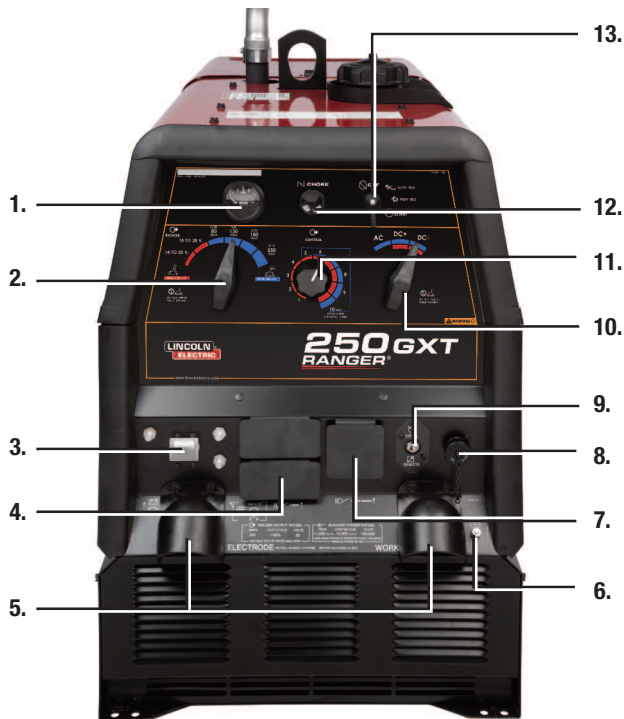
- 12 gallon (45 Ltrs) fuel capacity allows you to run an extended day.
- Circuit breaker on the 12V battery circuit provides added component protection.
- Convenient truck or trailer mounting with front and rear holes in base.

- Electric fuel pump avoids vapor lock. Assures consistent fuel delivery in locations having a combination of high altitude, warm ambient temperatures, and high anti-pollution additives in gasoline.
- Combination electric fuel gauge and engine hour meter located on control panel. Easily check both fuel level and hour operation. Fuel gauge helps you virtually eliminate running low on fuel during critical jobs. Hour meter helps plan for scheduled engine maintenance.



- Large top fuel filler neck is easily accessed for refueling.
- Electric Start Switch for easy starts. Switch combines OFF, START, and IDLER functions into one simple, compact, easy to use switch.
- Oil drain valve (no tools required) with removable extension tube.
- 435 cold cranking amps with the Group 58 battery for extra starting capacity in sub-zero temperatures.

## KEY CONTROLS



1. Electric Fuel Gauge and Engine Hour Meter
2. 6 Position Output Range Selector
3. Circuit Breakers
4. 120 Volt AC Receptacles (NEMA 5-20R)
5. Output Stud Covers
6. Ground Stud
7. 120/240 Volt AC Full KVA Receptacle (NEMA 14-50R)
8. 6-Pin Remote Connector
9. Local/Remote Switch
10. Polarity Switch
11. Fine Output Control
12. Engine Choke Control (Stainless Steel Cable)
13. Engine Start Switch with Idler Control

## QUALITY AND RELIABILITY

- Oil dip stick, filters, spark plugs, etc. are easily accessed with left, right and top engine doors. Left and right doors are removable for service.
- Adjust exhaust direction with top-mounted 360° rotatable exhaust muffler. Muffler made from aluminized steel for long life.
- Red and black powder paint finish offers increased durability with added protection from rust and corrosion. Also ultraviolet resistant to better retain color and gloss.
- Factory option available with stainless steel roof, case sides, and engine doors.
- Longer engine life, reduced noise emissions and greater fuel economy with automatic engine idler.
- Conveniently located engine maintenance label under top engine door.
- Automatic engine shutdown protection for low oil pressure.
- Reliable start-up with Group 58 battery with 435 cold cranking amps.
- Easy access battery cover.



- Dependability and long life aided by all-copper windings in rotor and stator with high quality insulation.
- Approved by Canadian Standards Association (CSA).
- Manufactured under a quality system certified to ISO 9001 requirements.
- Three-year Lincoln warranty (parts and labor) on welder. (Engine is warranted separately by the manufacturer.)
- Backed by Lincoln's Service Parts Commitment — We will ship in-stock parts within 24 hours of receipt of the order to anywhere within the U.S.

### MACHINE SPECIFICATIONS

Product Name	Ordering Information	Description	CC Rated Output Current/Voltage/Duty Cycle	CV-Rated Output Current/Voltage/Duty Cycle	Generator AC Power (2)/(3)	Dimensions H x W x L inches (mm)	Weight lbs. (kg)
Ranger® 250 GXT (Kohler OHV)	K2382-4 Painted Roof, Case Sides and Engine Doors	250 Amp AC/DC Arc Welder  11,000 Watts Peak	<b>AC Constant Current</b> 250A/25V/100%  <b>DC Constant Current</b> 250A/25V/100%	<b>DC Constant Voltage (1)</b> 250A/25V/100% 14-22V 18-28V	11,000 Watts Peak 10,000 Watts Continuous 60 Hz Single Phase  Two 120V Duplex Receptacles 20A per Duplex 40A Total (4)  120V/240V Receptacle 42A Each 120V Branch (4) 42A @ 240V	29.9 x 21.5 x 42.3 (759 x 546 x 1073)  To top of exhaust tube: 36.2 (920)	602 (273)
	K2382-5 Stainless Steel Roof, Case Sides, and Engine Doors	10,000 Watts Continuous AC Power	<b>Current Ranges</b> 160-250A 110-180A 70-130A 50-80A  Max OCV @ 3700 RPM 80V RMS				

- (1) DC constant voltage capability provides convenience and added safety when welding in electrically hazardous conditions.
- (2) When welding, available auxiliary power will be reduced. Output voltage is within +/- 10% at all loads up to rated capacity.
- (3) 120V will operate either 60 Hz or 50/60 Hz power tools, lights, etc.
- (4) Circuits cannot be wired in parallel to operate the same device.

### ENGINE SPECIFICATIONS

Engine Model	Description	Horsepower & Displacement	Ignition	Capacities	Operating Speeds	Fuel Consumption
Kohler OHV (5) Command CH23S (Gasoline)	2 Cylinder, 4 Cycle, OHV Air-Cooled Gasoline Engine Aluminum Alloy with Cast Iron Liners Electric Fuel Pump	23 HP @ 3600 RPM 41.0 cu in (674 cc)	Electric Start 12V Battery 435 Cold Cranking Amps Manual Choke	FUEL: 12 Gals (45 Ltrs.)  OIL: 2.0 Qts (1.9 Ltrs)	Full Load 250A DC 3,500 RPM	1.5 Gals/Hr 5.7 Ltr/Hr
					High Idle 3,700 RPM	0.8 Gals/Hr 2.9 Ltr/Hr
					Low Idle 2,400 RPM	0.4 Gals/Hr 1.5 Ltr/Hr

- (5) Kohler warranty is 3 years.





120V



**GENERAL OPTIONS**

**Power Plug Kit (20 amp)**

Provides four 120V plugs rated at 20 amps each, and one dual voltage, full KVA plug rated at 120/240V, 50 amps. 120V plug may not be compatible with common household receptacles.

Order **K802N**



**Full-KVA Power Plug**

One dual voltage plug rated at 120/240V, 50 amps. (NEMA 14-50P)

Order **T12153-9**



**GFCI Receptacle Kit**

Includes one UL approved 120V ground fault circuit interrupter duplex type receptacle and installation instructions. Replaces the factory-installed 120V duplex receptacle. Each receptacle of the GFCI duplex is rated at 20 amps. Maximum total current from the GFCI duplex is limited to 20 amps. Two kits required for all 120V receptacles on Ranger® and Commander® products.

Order **K1690-1**



**Spark Arrestor Kit**

Attaches to muffler exhaust tube. Virtually eliminates spark emissions.

Order **K1898-1**



**Canvas Cover**

To protect the engine drive when not in use. Made from attractive red canvas material that is flame retardant, mildew resistant and water repellent.

Order **K886-2**



**All-Terrain Undercarriage**

For moving by hand. Overall width 27 in. (0.7 m). Includes heavy-duty puncture-resistant (inner tube and sealant) tires.

Order **K1737-1**



**Factory Undercarriage**

For moving by hand on smooth surface floors. Heavy-duty, puncture-resistant (inner tube and sealant) tires and front caster. Convenient steering handle.

Order **K1770-1**



**Welding Gas Cylinder/LPG Tank Holder**

Holds welding gas cylinder or LPG tank (for products with LPG engine). For LPG: Use one holder for LPG tank and a second holder for welding gas cylinder. Both holders will attach to the K1770-1 undercarriage.

Order **K1745-1**



**Small Two Wheel Welder Trailer**

For heavy-duty road, off-road, plant and yard use. Includes pivoting jack stand, safety chains, and 13 in. wheels. Stiff .120 in. welded rectangular steel tube frame construction is phosphate etched and powder coat painted for superior rust and corrosion resistance. Low sway suspension gives outstanding stability with manageable tongue weight. Wheel bearings are packed with high viscosity, high pressure, low washout Lubriplate® grease. Includes a Duo-Hitch™, a 2 in. ball/lunette eye combination hitch. Overall width 60".

Order:

**K2635-1** Trailer

**K2639-1** Fender & Light Kit

**K2640-1** Cable Rack



**STICK OPTIONS**

**Accessory Kit**

For stick welding. Includes 35 ft. (10.7 m) #2/0 electrode cable with lug, 30 ft. (9.1 m) #2/0 work cable with lugs, headshield, filter plate, work clamp and electrode holder. 400 amp capacity.

Order **K704**



**Accessory Kit**

For stick welding. Includes 20 ft. (6.1 m) #6 electrode cable with lug, 15 ft. (4.6 m) #6 work cable with lugs, headshield, filter plate, work clamp, electrode holder and sample pack of mild steel electrode. 150 amp capacity.

Order **K875**



**Remote Control Kit**

Consists of a control box with choice of two cable lengths. Permits remote adjustment of output.

Order **K857** for 25 ft. (7.6 m)

Order **K857-1** for 100 ft. (30.5 m)



**Remote Output Control with 120V AC Receptacles**

Remote weld output control box with two 120V AC receptacles having GFCI (ground fault circuit interrupter) protection. One cord for both remote and power. 100 ft. (30.5 m) length. Permits remote adjustment of weld output and power for tools (such as a grinder) at the work. (20 amp capacity).

Order **K2627-2**



**TIG OPTIONS**

**Pro-Torch™ PTA-26 TIG Torch**

Air-cooled 200 amp torch (2 piece separate power conductor and a braided gas hose).

Order **K1783-4**



**Magnum® Parts Kit for PTA-26V**

Provides all the torch accessories you need to start welding. Parts kit provides collets, collet bodies, a back cap, alumina nozzles and tungstens in a variety of sizes, all packaged in an easy to carry reclosable pack.

Order **KP509**



**TIG Module**

Portable, high frequency unit with gas valve for TIG welding. Rated at 300 amps/60% duty cycle.

Order **K930-2**



**Control Cable**

Connects TIG Module to power source. Comes with 9-pin TIG Module connector and power source 6-pin connector and 120V plug.

Order **K936-3**



**Control Cable Extension**

Allows the TIG Module to be operated at distances up to 200 ft. (61 m) from the power source. Available in 45 ft. (13.7 m) sections.

Order **K937-45**



**Hand Ampctrl™**

Provides 25 ft. (7.6 m) of remote current control for TIG welding. (6 pin plug connection). Velcro straps secure torch.

Order **K963-3** (one size fits all Pro-Torch™ TIG torches).



**Foot Ampctrl™**

Varies current while welding for making critical TIG welds and crater filling. Depress pedal to increase current. Depressing pedal fully achieves maximum set current. Fully raising the pedal finishes the weld and starts the afterflow cycle on systems so equipped. Includes 25 ft. (7.6 m) control cable.

Order **K870**



**Contactor Kit**

Installs in the K930-2 TIG Module for use with welders without a contactor. Makes the TIG torch electrode electrically "cold" until the Ampctrl™ is activated.

Order **K938-1**



**Docking Kit**

Secures TIG Module to top of flat-roofed power source.

Order **K939-1**

## RECOMMENDED ACCESSORIES TO EXPAND MACHINE CAPABILITIES

### WIRE FEEDER OPTIONS



**LN-25 PRO Wire Feeder**  
Portable CC/CV unit for flux-cored and MIG welding with MAXTRAC® wire drive system. Includes gas solenoid and internal contactor.  
**Order K2613-1**



**K126 PRO Innershield® Gun (for LN-25 PRO)**  
For self-shielded wire with 15 ft. (4.5 m) cable. For .062-5/64 in. (1.6-2.0 mm) wire. Includes K466-10 Connector Kit.  
**Order K126-12**



**Drive Roll and Guide Tube Kit (for LN-25 PRO)**  
For cored or solid steel wire.  
**Order KP1697-068 for .068-.072 in. (1.8 mm)**  
**Order KP1697-5/64 for 5/64 in. (2.0 mm)**



**Magnum® PRO 350 Ready-Pak®**  
15 ft., .035-5/64 in.  
Magnum® PRO MIG/flux-cored welding guns are rated 100% duty cycle. The guns are designed for high amperage, high duty cycle applications in extreme environments where heat-resistance and fast serviceability are key.  
**Order K2652-2-10-45**

**Drive Roll and Guide Tube Kit (for LN-25 PRO)**  
For .035-.045 in. (0.9-1.1 mm) solid steel wire.  
**Order KP1696-1**

**POWER MIG® 180C**  
Premium compact wire welder with continuous voltage control for MIG and flux-cored welding. 30 to 180 amp output range. Get input power from the AC generator of the engine-driven welder with the K1816-1 Full-KVA Adapter Kit (required). Add the K2532-1 Magnum® 100SG Spool Gun for aluminum MIG welding.  
**Order K2473-1**



**Full - KVA Adapter Kit**  
Provides convenient connection of Lincoln Electric equipment having a 240V AC 1-phase plug (NEMA 6-50P) to the full-KVA receptacle on engine-driven welders.  
**Order K1816-1**



**Magnum® 100SG Spool Gun**  
Designed to easily feed 4 in. (102 mm) diameter 1 lb. (0.45 kg) spools of .030 in. (0.8 mm) or .035 in. (0.9 mm) diameter SuperGlaze® aluminum MIG wire. Includes gun, adapter kit, .035 in. (0.9 mm) contact tips (qty. 3), gas nozzle, and a 1 lb. (0.45 kg) spool of SuperGlaze® 4043 .035 in. (0.9 mm) MIG wire. Packaged in a convenient carrying case.  
**Order K2532-1**

## PRODUCT SPECIFICATIONS

Product Name	Product Number	Rated Output Current/Voltage/Duty Cycle	Output Range	Engine Model	Number of Cylinders	HP@ Speed (rpm)	H x W x D inches (mm)	Net Weight lbs. (kg)
Ranger® 250 GXT	K2382-4 Painted Roof, Case Sides and Engine Door	250A AC/DC CC/25V/100% 250A DC CV/25V/100%	50-250A AC/DC 14-28V CV 11,000 watts peak 10,000 watts continuous	Kohler® OHV Command® CH23S	2	23 @ 3600	29.9 x 21.5 x 42.3 (759 x 546 x 1074)	602 (273)
	K2382-5 Stainless Steel Roof, Case Sides, and Engine Doors						To top of exhaust tube: 36.2 (920)	

For best welding results with Lincoln Electric equipment, always use Lincoln Electric consumables. Visit [www.lincolnelectric.com](http://www.lincolnelectric.com) for more details.

### CUSTOMER ASSISTANCE POLICY

The business of The Lincoln Electric Company is manufacturing and selling high quality welding equipment, consumables, and cutting equipment. Our challenge is to meet the needs of our customers and to exceed their expectations. On occasion, purchasers may ask Lincoln Electric for information or advice about their use of our products. Our employees respond to inquiries to the best of their ability based on information provided to them by the customers and the knowledge they may have concerning the application. Our employees, however, are not in a position to verify the information provided or to evaluate the engineering requirements for the particular weldment. Accordingly, Lincoln Electric does not warrant or guarantee or assume any liability with respect to such information or advice. Moreover, the provision of such information or advice does not create, expand, or alter any warranty on our products. Any express or implied warranty that might arise from the information or advice, including any implied warranty of merchantability or any warranty of fitness for any customers' particular purpose is specifically disclaimed.

Lincoln Electric is a responsive manufacturer, but the selection and use of specific products sold by Lincoln Electric is solely within the control of, and remains the sole responsibility of the customer. Many variables beyond the control of Lincoln Electric affect the results obtained in applying these types of fabrication methods and service requirements.

Subject to Change – This information is accurate to the best of our knowledge at the time of printing. Please refer to [www.lincolnelectric.com](http://www.lincolnelectric.com) for any updated information.

**LINCOLN®**  
**ELECTRIC**  
THE WELDING EXPERTS®