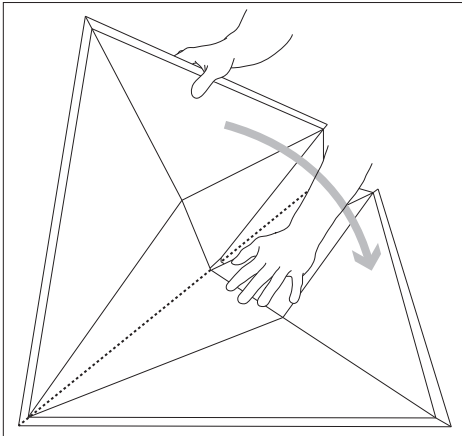
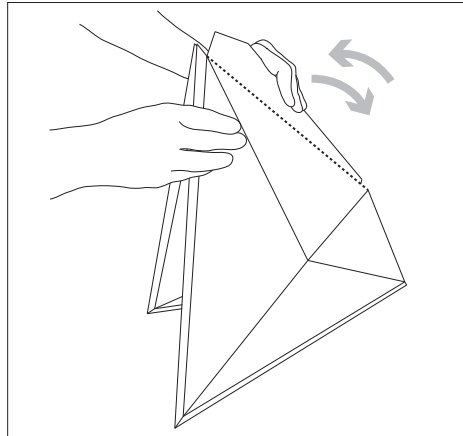


FoldScapes Crystal Tile

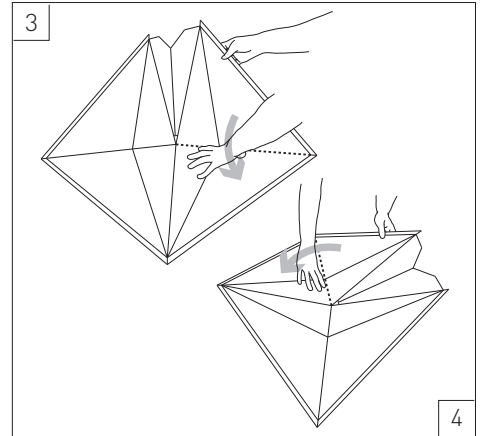
IMPORTANT: Follow instructions carefully! Save instructions for future reference.
Printable instructions available online at: <http://www.mioculture.com/media/instructions/fld/crystal.pdf>



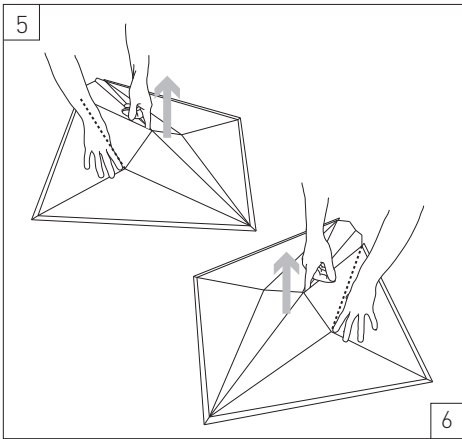
STEP 1 Place tile on a clean and flat surface (white side up), then gently fold in half.



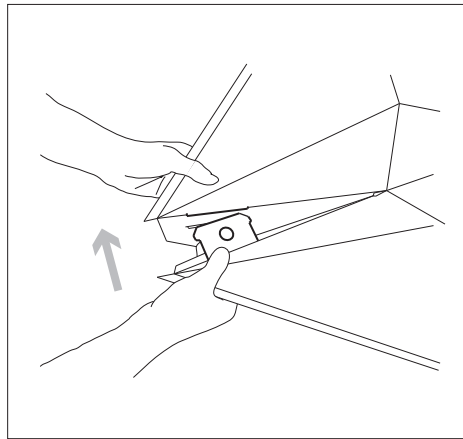
STEP 2 Carefully fold the locking tab as shown to prevent wrinkling or damage to tile.



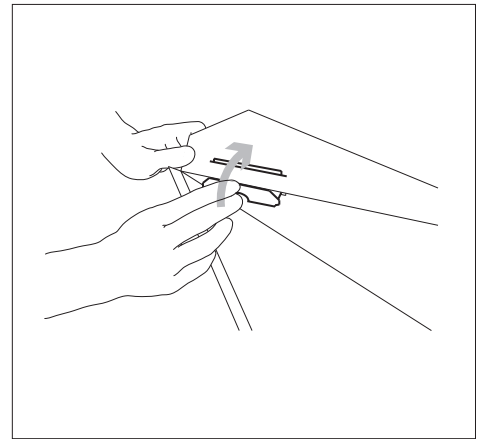
STEP 3 Carefully fold along the other axis. Do not apply excessive force or the tile will crease.
STEP 4 Repeat on the other side.



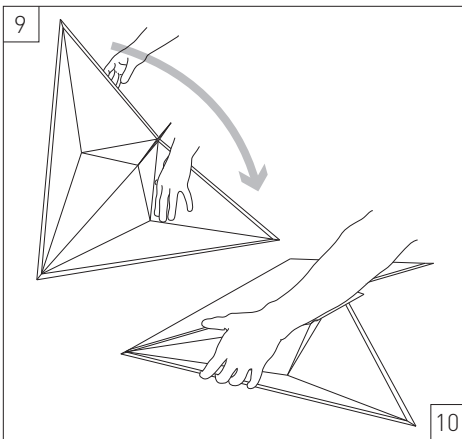
STEP 5 Hold down the tile as shown, then insert finger into center hole and lift to create the inner folds.
STEP 6 Repeat on other side.



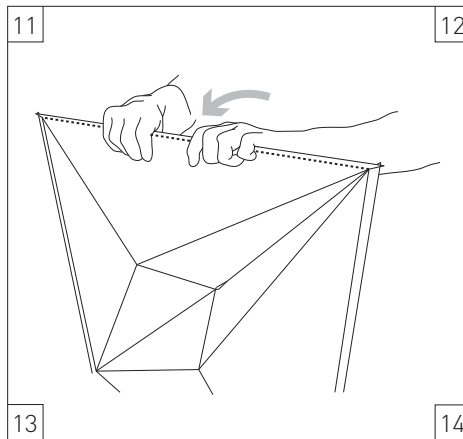
STEP 7 Insert tab into the edge slot.



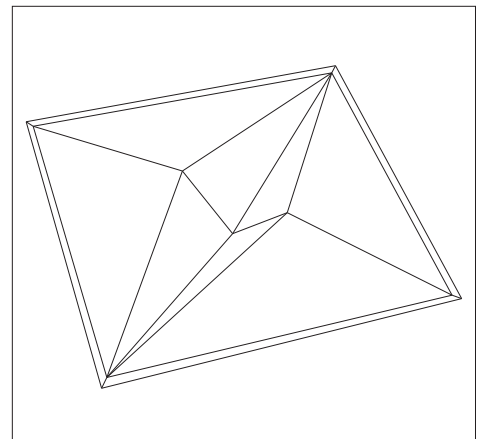
STEP 8 Secure tab by inserting into the second slot and fold over edge.



STEP 9-10 Gently start to fold tile over, making sure not to let the edges bow. Continue to fold over to release tension in the creases. This will allow the tile to sit flat in the drop ceiling grid.



STEP 11-14 Fold edge over on all four sides.



Tile is ready to install!