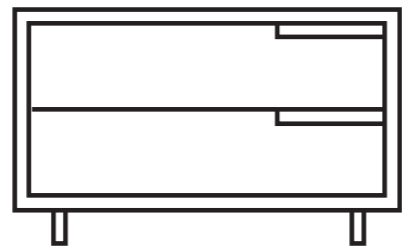
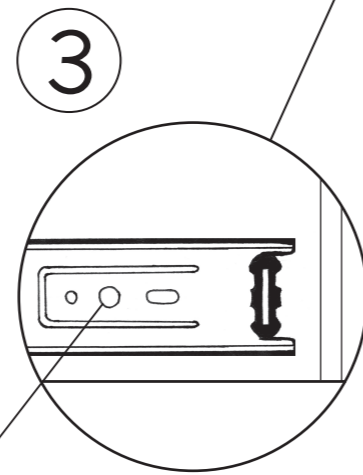
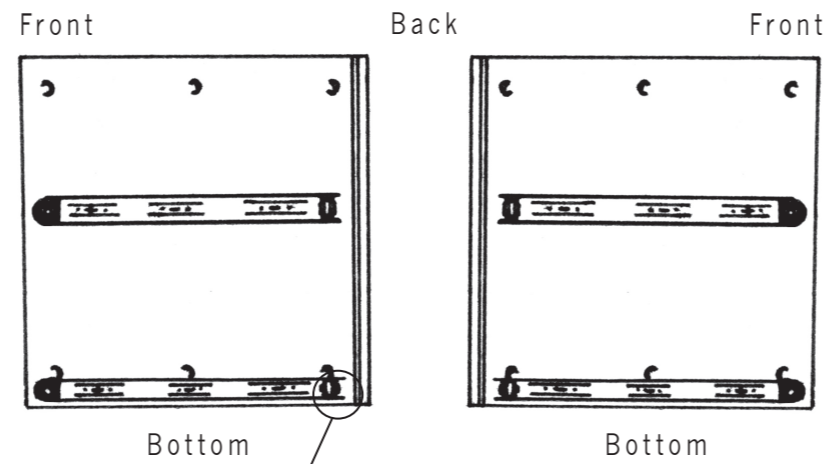
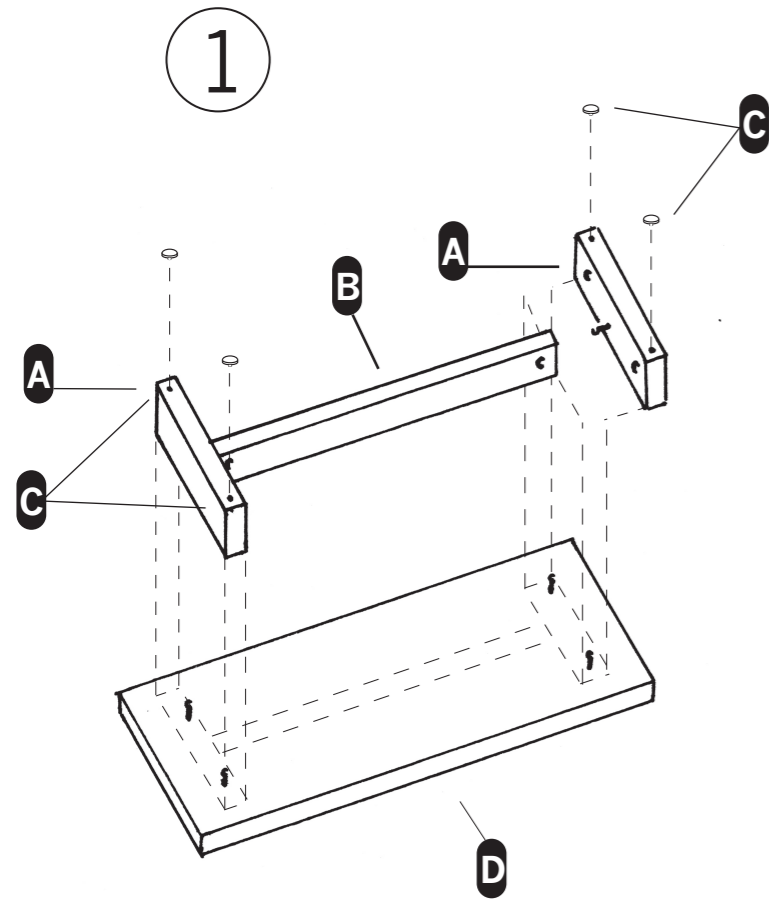


# Assembly Notes



# MODULICIOUS 1



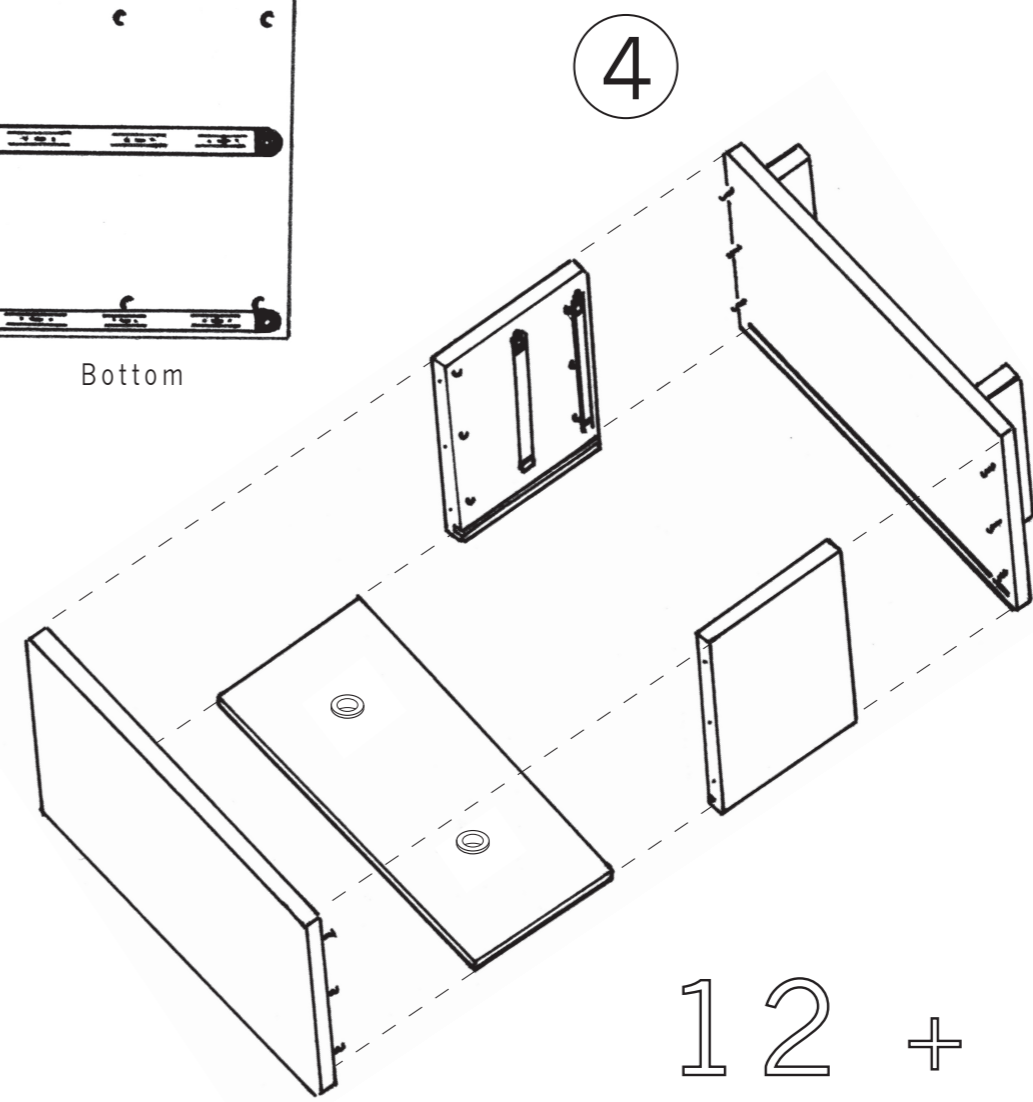
Your first screw goes here

For ages

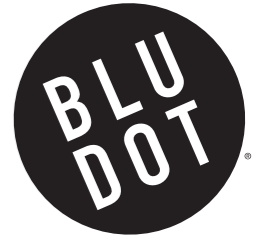
Assemble on carpet or protective mat. Before beginning, familiarize yourself with using cam connectors. (see insert right corner)

**HOW TO USE CAM CONNECTERS**

- 1 With a Phillips head screw driver, screw cam post **Y** into the pre-drilled hole **X**.
- 2 Insert the cam **Z** into the larger hole with the arrow on the cam pointing to the cam post.
- 3 Slide the panel with the cam down onto the installed cam post. Tighten the cam by turning it clock-wise with the Phillips head screw driver until you feel the cam "lock in".



12 + up



- 1 See sketch 1. Screw the cam post into the small hole on the side of each foot **A**. Place the two cams in the stretcher **B** so that the arrow points towards the end of the stretcher and turn the cams to the right until snug. Now, you know how cams work (a valuable skill).
- 2 Locate the bottom panel **D**. This panel has holes drilled on both faces (the top panel has holes on only one side). Find the side with the groove. Place this side face down. Now with the other side facing up, screw cam posts into all four holes. Place cams into the four holes on the feet **A**. Attach feet/stretcher assembly to bottom panel by turning cams until snug. See sketch 1.
- 3 Push foot tacks into bottom side of the feet **C**.
- 4 Turn this whole assembly over so it faces right side up, install six more cam posts and set aside.
- 5 Locate the side panels and lay them on the floor with the holes and grooves facing up so they look like sketch 2. Insert six cams into the larger holes of each side panel with the arrow pointing

- towards the closest edge. Now it's time to attach the drawer slides to each side panel. Do you see how the slides are left hand and right hand? Now orient the drawer slides as shown in the detail above (Sketch 2).
- 6 **IMPORTANT:** Look at which hole in the slide gets the first screw. See sketch 3. After installing the glides onto the side panels, insert six cams into each side panel with the arrow pointing towards the back groove. Slide each side panel onto the bottom panel (which you set aside) and tighten by turning the cams. See sketch 4.
- 7 Locate the white back panel. Install the black rubber grommets into the holes by squeezing them into place. Slide the white back panel into the grooves of each side panel. Screw six cam posts to the underside of the top panel. Attach top panel to sides by turning the cams until they are snug.
- 8 To install each drawer, pull the ball bearing cartridges on the cabinet slides to the front. Align drawer mounted slides with the cabinet slides and slide drawer in. Happy now?!

**HARDWARE INVENTORY**

- 18 cams
- 18 cam posts
- 4 foot tacks
- 2 black grommets
- 8 slide screws

**WOOD COLOR OVER TIME:** Air and daylight will naturally change the color of the wood. For most woods, this change is gradual and very slight. During the first several months, while the patina is developing, items placed on the wood should be rotated to different locations to prevent uneven coloration. Over time an even patina will develop.

BLU DOT DESIGN AND MANUFACTURING, INC. copyright 2005.  
www.bludot.com / t. 612.782.1844 / f. 612.782.1845